

# Visit areas for CLIC during CERN open days

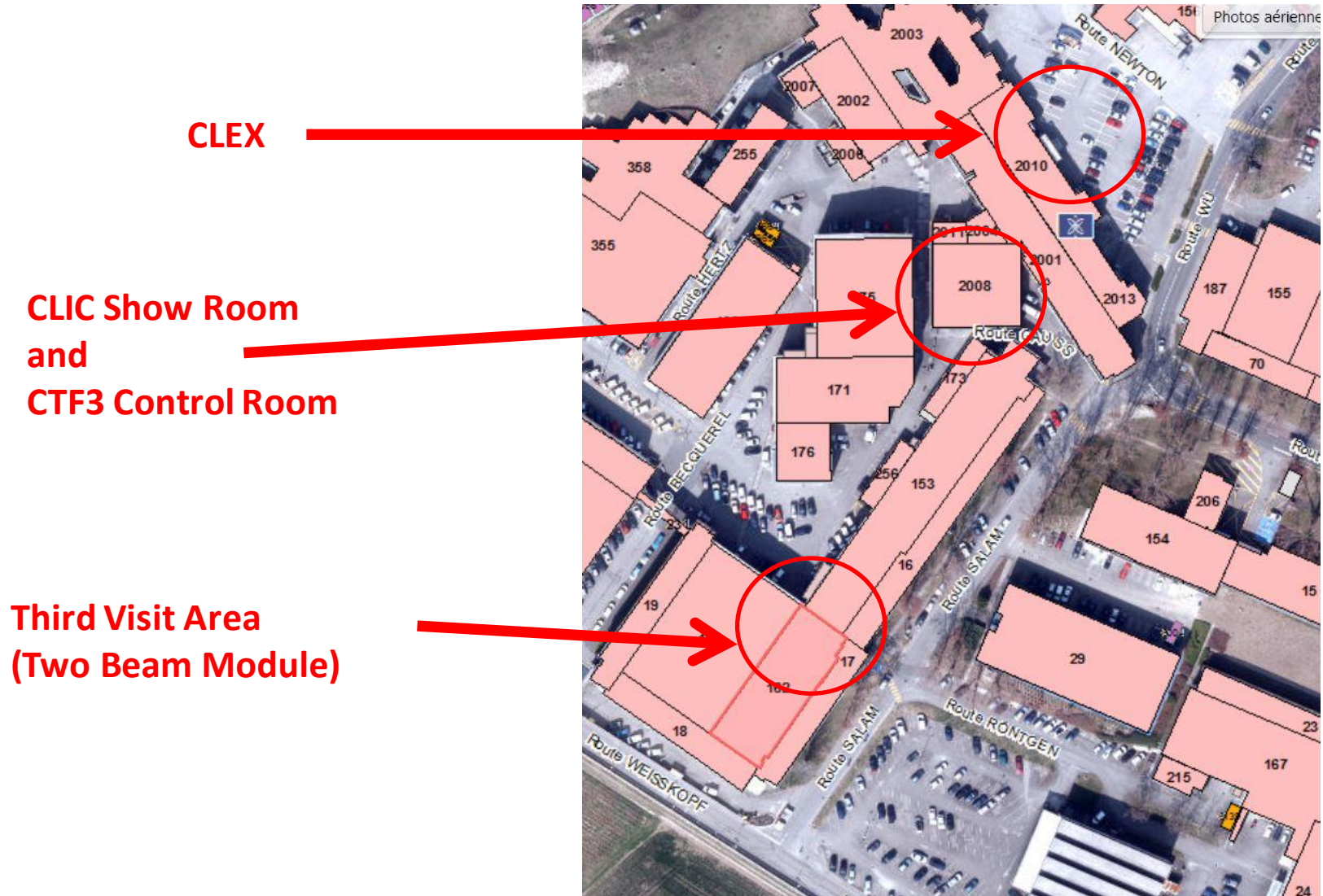
News: Both Sat 28 and Sun 29 Sep  
open for the public  
~100.000 visitors expected!

Building 2010 CLEX area

Building 2008 CLIC showroom / CTF3 control room

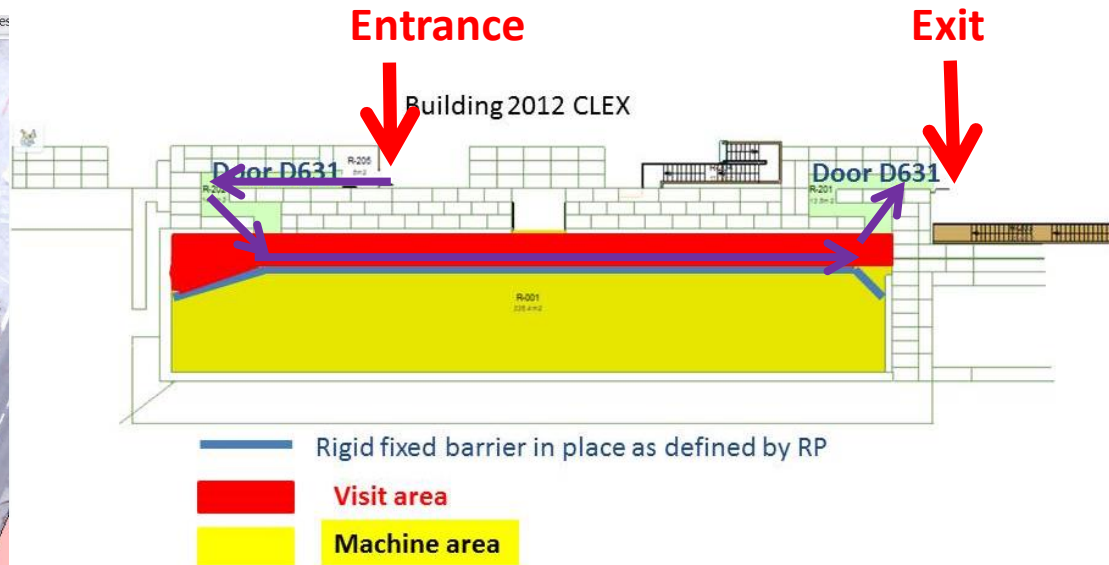
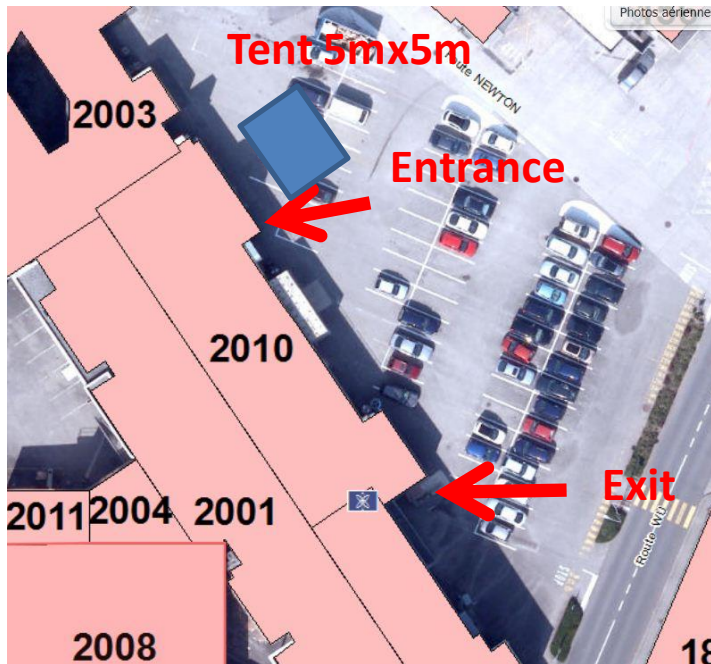
Building 162 (Two Beam Module)

# 3 proposed areas in close proximity



# CLEX area Building 2010

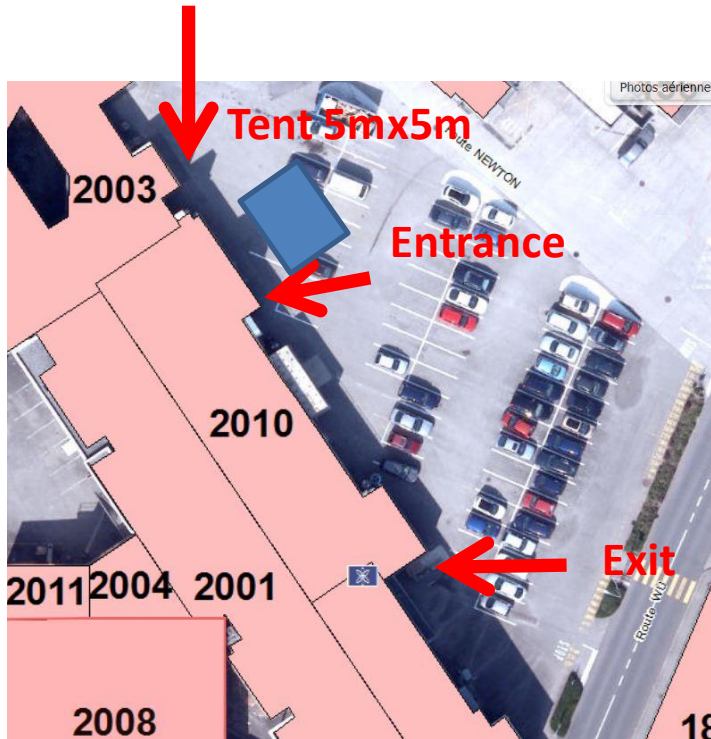
- Visits as procedure <https://edms.cern.ch/document/1264066/1>  
but groups of 12, 3 groups at the time



Tented area outside with Posters

# CLEX area Building 2010

Waiting lines with barriers along the chain towards building 2003



## Visitors:

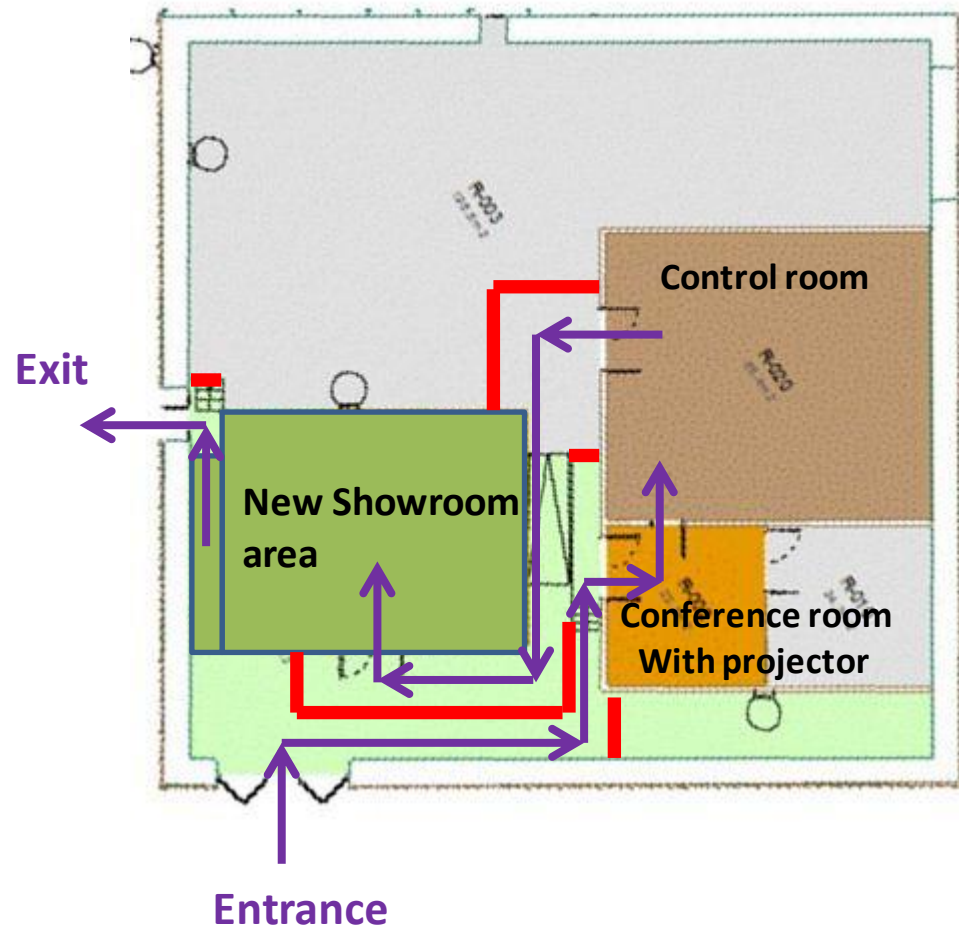
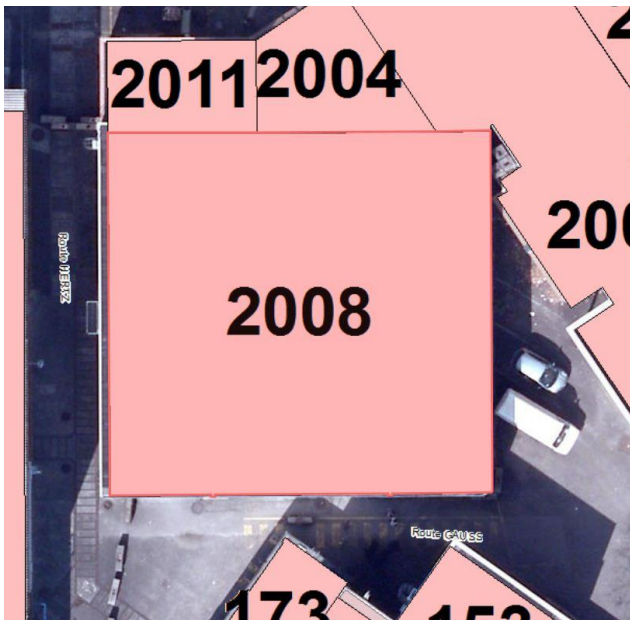
- 12 years min
- pregnant woman allowed
- disabled access possible
- $<10 \mu\text{Sv}$  but  $1\mu\text{Sv}$  goal


## Guides:


- SIR course [cern.ch/go/nN7v](http://cern.ch/go/nN7v)
- CERN personal + operational dosimeter
- dose recording (each visit - each group)

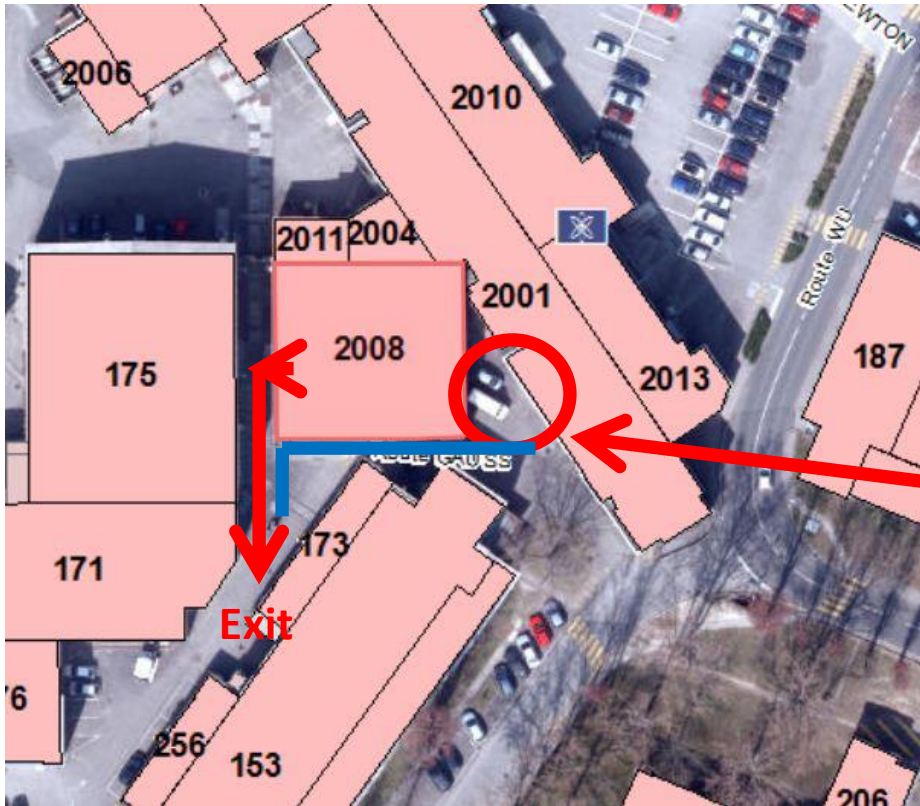
# Building 2008

## CLIC showroom and CTF3 Control room



 barriers

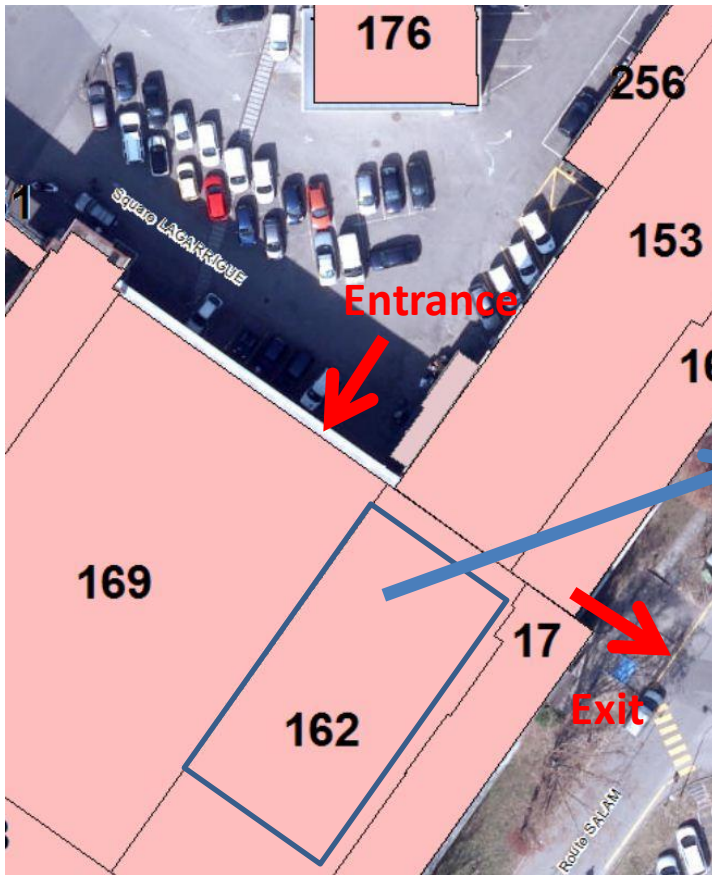
 Visit itinerary



Waiting area

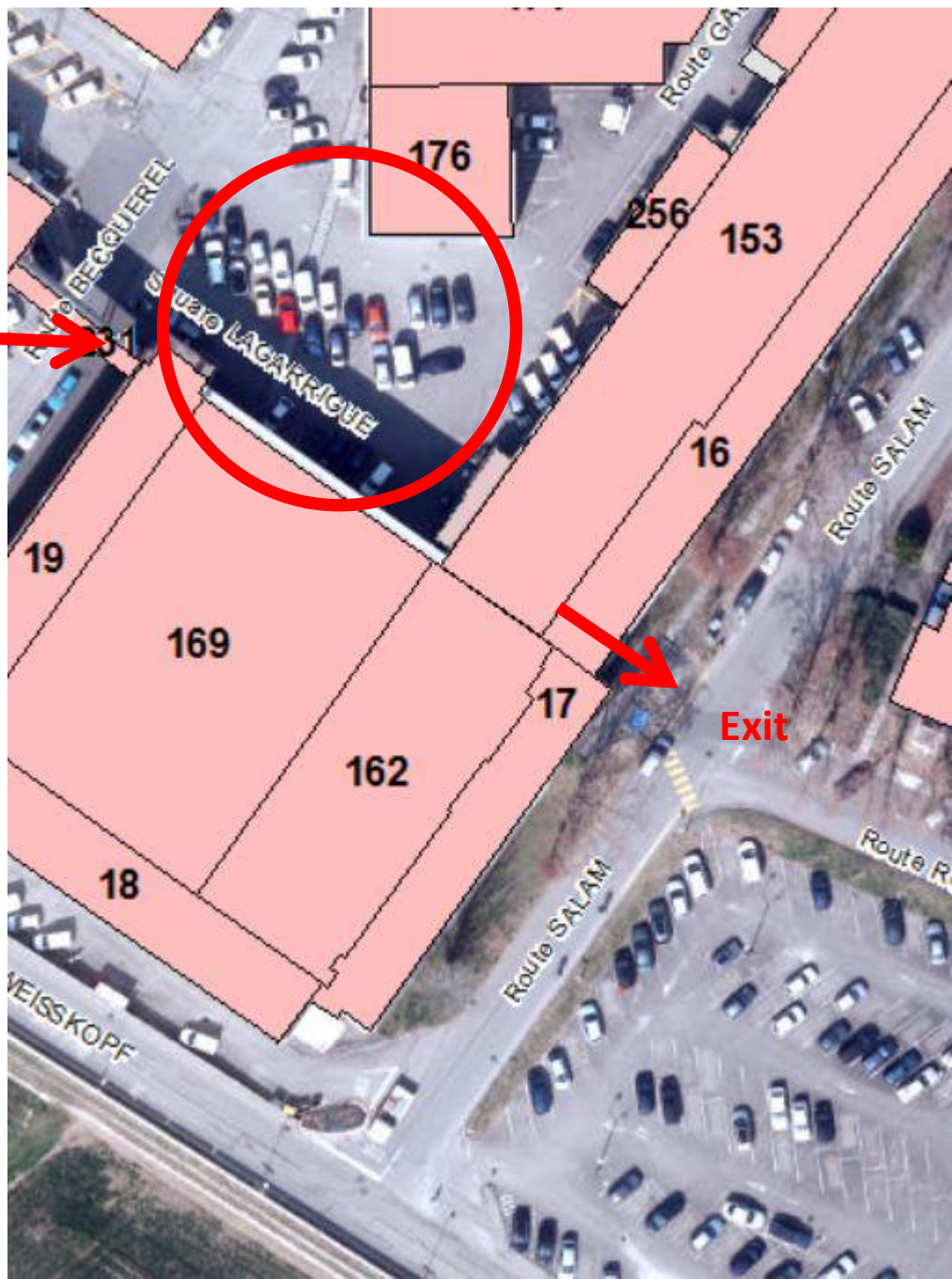
- We have a small group to look at the content and logistics for the showroom
  - Alexia Augier; Frank Tecker; Gerard Mcmonagle; Cristian Alejandro Fuentes Rojas; Sophie Redford; Rolf Landua; Andre-Pierre Olivier
- Rearranging the show room with a big touch screen (84"), vitrines, detector model, posters, presentation + movie

# Third Visit Area (Two Beam Module) building 162



up to 10 3D-printouts of the two-beam module, large LCD screen, visit to the module

Waiting area



Exit



- Very Important: **We need guides**
  - Shifts last 6-7 hours,  
from 08:00 to 15:00 and from 14:00 to 21:00
    - counted 3/4 guides per point simultaneously, 6/7 per shift
    - 2 crowd marshalls per point simultaneously, 3 per shift
  - You can volunteer for one shift or a full day, on either Saturday and/or Sunday
  - Please register if you would like to volunteer:  
<https://espace.cern.ch/OD2013/Volunteers/Pages/default.aspx>