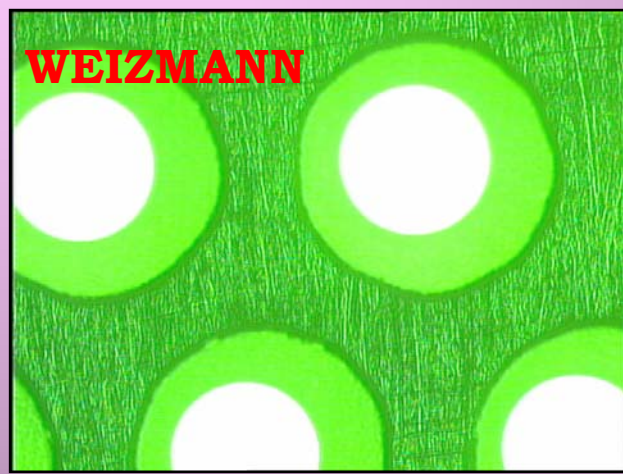


# SAME GEOMETRY, BUT DIFFERENT SIZE OF THE RIM

With rim



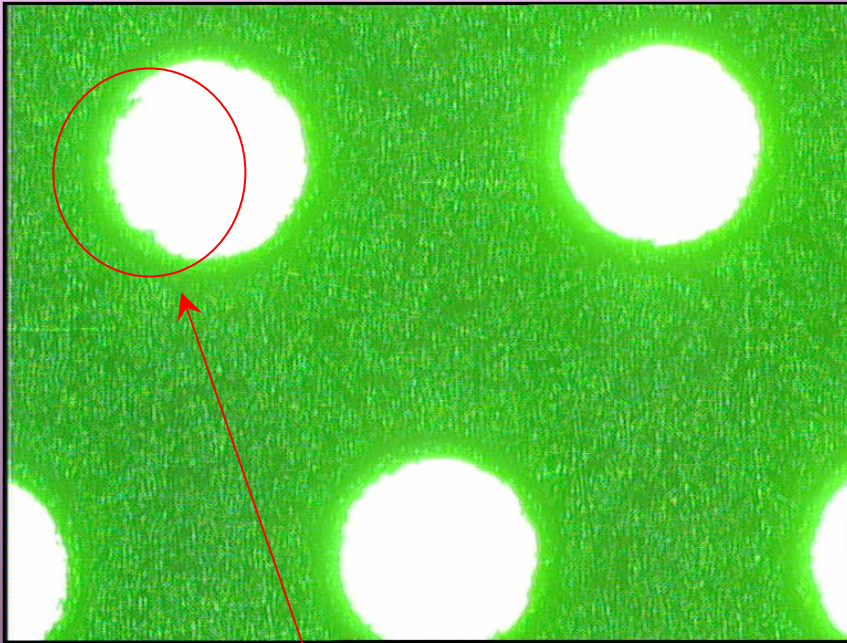
**Waiting for the similar Weizmann THGEM built by Rui**

Without rim

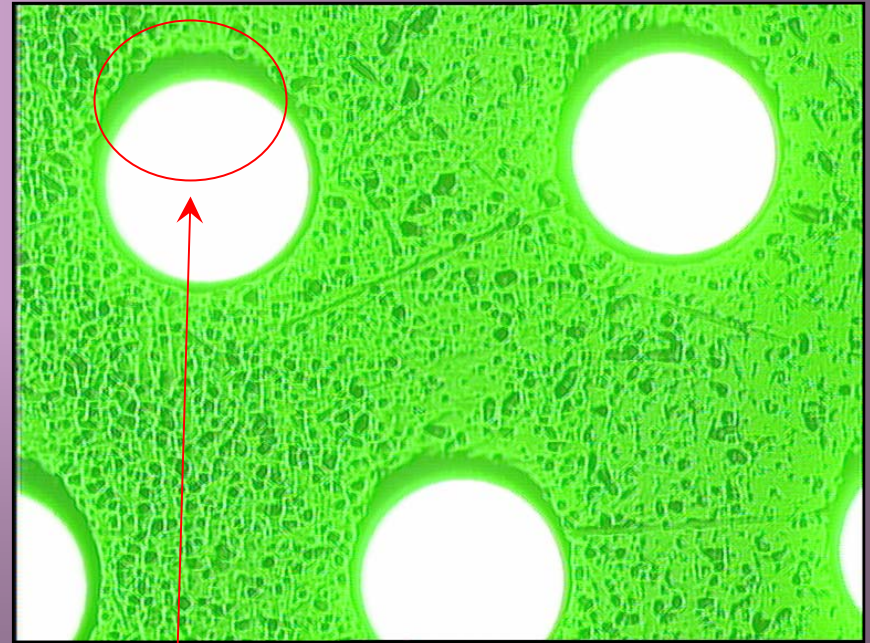


# BEFORE AND AFTER THE CHEMICAL POLISHING

**BEFORE**



**AFTER**



**REMARKS:** different aspects of the rim after the two different treatments!

# THGEM AVAILABLE

ORIGIN	DIAM.(mm)	PITCH (mm)	RIM (mm)	THICK (mm)	QUANT.
Weizmann	0.3	0.7	0.1	0.4	1
Weizmann	0.3	0.8	0.1	0.4	2
Weizmann	0.4	0.8	0.1	0.4	1
Weizmann	0.5	0.9	0.1	0.4	1
Weizmann	0.5	1	0.1	0.4	1
Rui	0.3	0.7	0	0.4	1+1
Rui	0.3	0.7	0.4	0.4	4
Rui	0.2	0.5	0.01	0.2	1