



ILCDIRAC

A grid solution for the LC community

C. Grefe, S. Poss, A. Sailer

CERN

October 1st, 2013

CLIC detectors & physics meeting

Outline



Current status

Data management

Bug tracking

Contact info

Final word

ILCDIRAC **now stable**, no more major developments, only bug fixes.

ILD concept now moves towards using ILCDIRAC:

- ▶ Used it for user jobs
- ▶ Several questions came
- ▶ ILCDIRAC required a few fixes to adapt to that use case: Production job class, support for application specific inputs (ILDConfig package)
- ▶ File Catalog meta data adjustments required for ILD
- ▶ The web interface to the File Catalog has issues (DIRAC, not ILCDIRAC), but working on those now. Next major version of the portal will have a different interface.

Eduard Avetisyan¹:

"ILCDIRAC is an appropriate system for future ILD productions"

More users are coming every week, now \approx 100 registered, 20 active

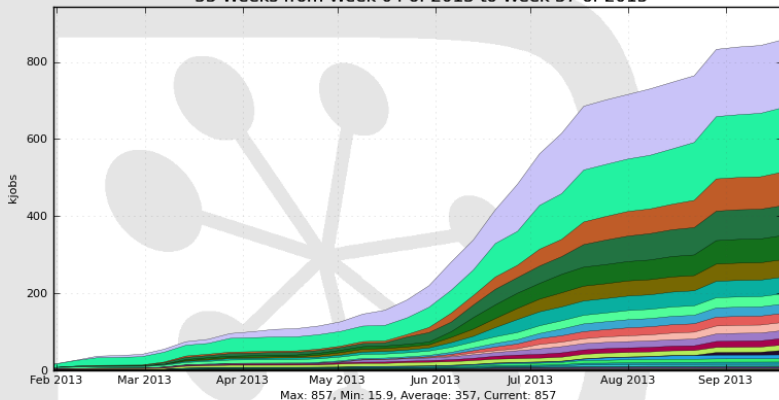
¹<http://ilcagenda.linearcollider.org/conferenceOtherViews.py?view=standard&confId=6113>

Current status: User jobs



User jobs since Feb. 2013

33 Weeks from Week 04 of 2013 to Week 37 of 2013



LCG.CERN.ch	176.2	LCG.LAPPfr	23.4
LCG.DESY-HH.de	166.9	LCG.Freiburg.de	21.0
LCG.KEK.jp	87.1	LCG.QMUL.uk	20.5
LCG.IN2P3-CC.fr	77.5	LCG.UKI-NORTHGRID-LIV-HEP.uk	17.1
LCG.Bristol.uk	62.7	LCG.UKI-SOUTHGRID-RALPP.uk	14.0
LCG.Manchester.uk	45.4	LCG.SCOTGRIDURHAM.uk	11.6
LCG.Brunel.uk	43.1	LCG.GRIF.fr	9.8
LCG.IN2P3-IRES.fr	26.7	LCG.Birmingham.uk	8.7
LCG.NIPNE.ro	24.1	...	plus 14 more

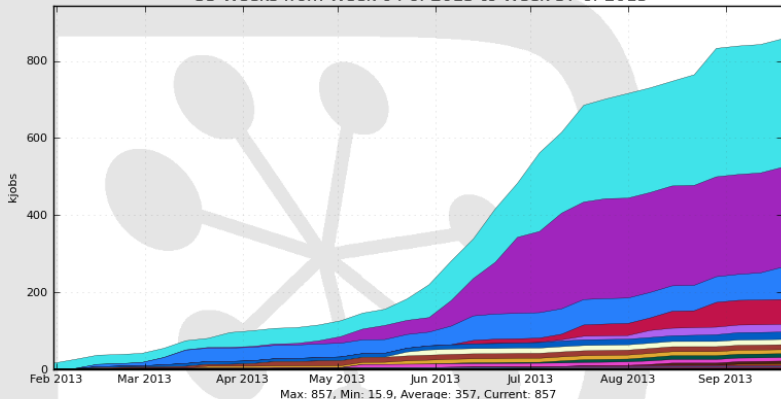
Generated on 2013-09-26 17:19:10 UTC

Current status: User jobs



User jobs since Feb. 2013

33 Weeks from Week 04 of 2013 to Week 37 of 2013



calanchac	333.1	esicking	10.0	bkrupa	0.3	mszalay	0.0
nalipour	259.2	tjunping	9.1	bvormwald	0.3	jengels	0.0
alucacit	83.8	avetisyan	6.3	vchobano	0.1	lweuste	0.0
jstrube	64.4	sredford	5.0	sposs	0.1	giwai	0.0
jmarshall	19.9	jrouene	3.5	mavogel	0.0	potter	0.0
cgrefe	19.2	igarcia	2.2	pdoulet	0.0	hmiyake	0.0
amiyamot	13.6	sailer	2.2	fgaede	0.0	aespargi	0.0
proloff	12.9	blaising	1.2	mschram	0.0		
homer	10.3	slukic	0.5	milap	0.0		

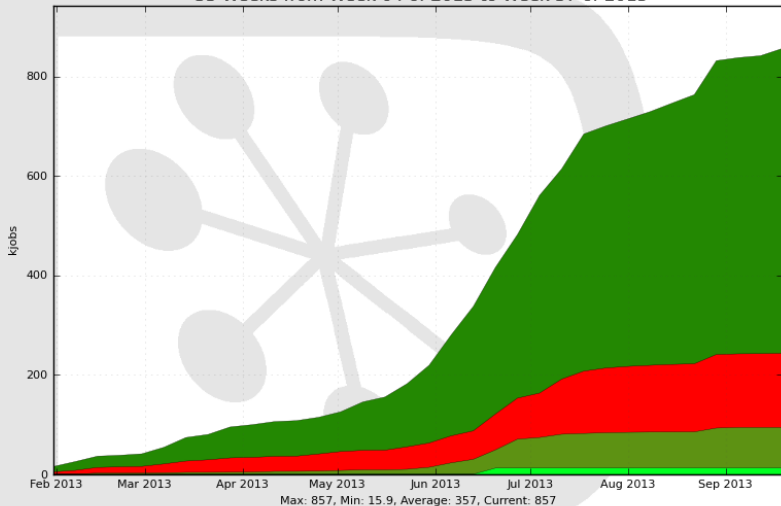
Generated on 2013-09-26 17:26:16 UTC

Current status: User jobs



User jobs since Feb. 2013

33 Weeks from Week 04 of 2013 to Week 37 of 2013



Done 613.6 Failed 149.1 Rescheduled 81.6 Completed 12.9

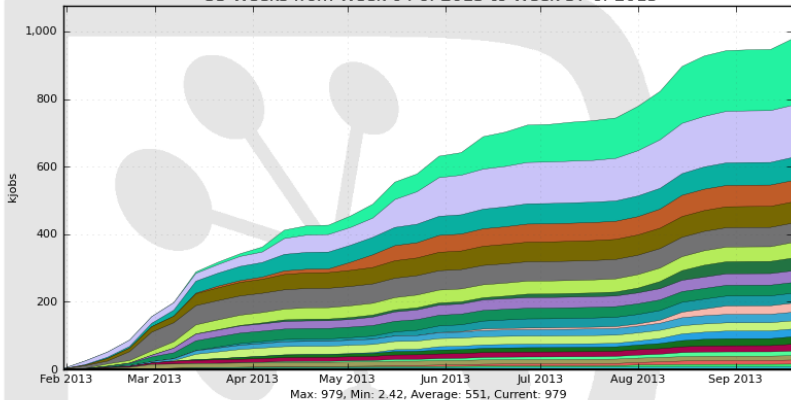
Generated on 2013-09-26 17:26:46 UTC

Current status: Production jobs



Production jobs since Feb. 2013

33 Weeks from Week 04 of 2013 to Week 37 of 2013



LCG.DESY-HH.de	197.1	LCG.UKI-NORTHGRID-LANCS-HEP.uk	31.7
LCG.CERN.ch	154.5	LCG.UKI-LT2-IC-HEP.uk	29.4
LCG.Brunel.uk	68.7	LCG.Freiburg.de	26.9
LCG.KEK.jp	63.4	LCG.NIPNE.ro	25.4
LCG.Manchester.uk	62.6	LCG.BNL.us	24.2
LCG.PNNL.us	57.5	LCG.GRIF.fr	22.9
LCG.UKI-SOUTHGRID-RALPP.uk	46.0	LCG.Bristol.uk	22.2
LCG.IN2P3-CC.fr	38.0	LCG.UKI-NORTHGRID-LIV-HEP.uk	20.4
LCG.QMUL.uk	34.5	...	plus 14 more

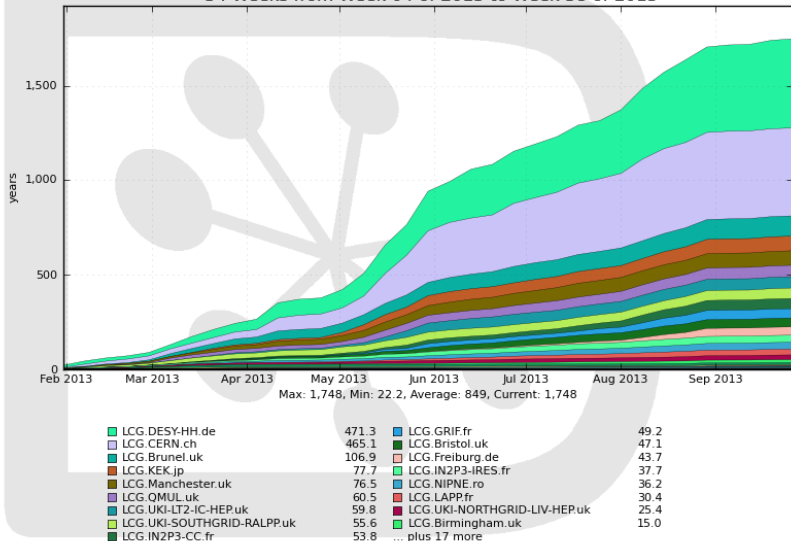
Generated on 2013-09-26 17:21:04 UTC

Current status: All jobs



CPU usage per site

34 Weeks from Week 04 of 2013 to Week 38 of 2013



Generated on 2013-09-27 17:06:13 UTC



Data management

DIRAC File catalog (DFC) knows about:

- ▶ most files produced for the ILC DBD
- ▶ all files for the SID DBD
- ▶ all files for CLIC

Lcg File Catalog and DFC are written in parallel, and thanks to the failover mechanism: **NO DATA LOSS**

Storage elements:

- ▶ Failover mechanism also protects physical files: automatic replications between sites
- ▶ Top 5 storage element usage (FC:/>size -l):

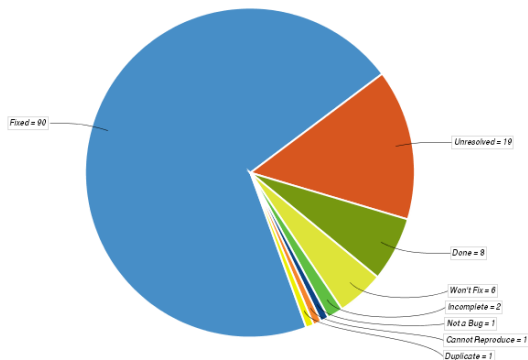
Storage	Usage	CLIC	ILC	Files
CERN-SRM	868 TB	861 TB	7 TB	4 053 817
DESY	96 TB	0	96 TB	306 585
KEK	95 TB	76 GB	94 TB	244 148
RAL-SRM	93 TB	4TB	89 TB	1 026 781
PNNL-SRM	25 TB	0	25 TB	733 423

Most data produced for the CLIC CDR.

Bug tracking



Use of JIRA: <http://its.cern.ch/jira/browse/ILCDIRAC>



Bug tracking



From Web portal:

Report a Problem				
	JobName	LastUpdate [UTC]	LastSignOfLife [...]	SubmissionTim...
	00002792_0000...	2013-09-26 18:50	2013-09-26 18:50	2013-09-26 18:50
	00002792_0000...	2013-09-26 18:51	2013-09-26 18:51	2013-09-26 18:50
	00002792_0000...	2013-09-26 18:51	2013-09-26 18:51	2013-09-26 18:50
	00002791_0000...	2013-09-26 18:51	2013-09-26 18:51	2013-09-26 18:50
	00002791_0000...	2013-09-26 18:51	2013-09-26 18:51	2013-09-26 18:50

Mailing lists



Register: ilcdirac-register@cern.ch

Questions: ilcdirac-support@cern.ch

Forum: <http://forum.linearcollider.org/index.php?t=index&cat=22&rid=0>

Information: <https://twiki.cern.ch/twiki/bin/view/CLIC/DiracUsage>

Any new user is welcome!

Thanks



Our thanks go to

- ▶ the Site administrators for fixing the issues quickly
- ▶ the DIRAC developers for fast replies and discussions
- ▶ the users for positive feedback