



Production System 2 manpower and funding issues

Alexei Klimentov
Brookhaven National Laboratory

Aug 19, 2013
Production System Technical Meeting
CERN



ProdSys2 Timeline (June 2013)

| | | |
|---|----------------|---|
| JEDI DB scalability tests | Done | |
| Phase 1 documentation | Done | |
| DB schema design | April 15, 2013 | ✓ |
| DEfT detailed design | Jun 1, 2013 | ✓ |
| TDR | | |
| JEDI detailed design | Jun 1, 2013 | ✓ |
| TDR | | |
| JEDI test with ProdSys1 tasks | July 1, 2013 | |
| DEfT task creation tests | July 1, 2013 | |
| ProdSys2 tests all parts | Sep 1, 2013 | |
| ProdSys2 operational (open to users) | Dec 1, 2013 | |
| ProdSys1 shutdown | Mar 1, 2014 | |

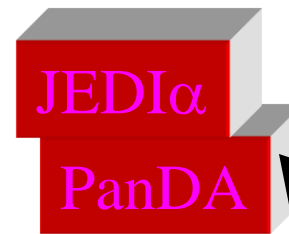
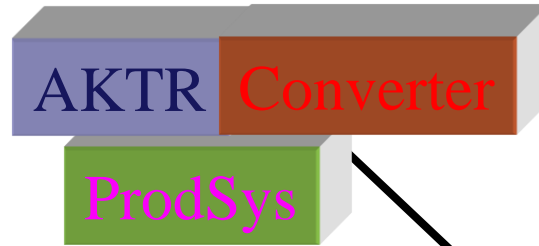
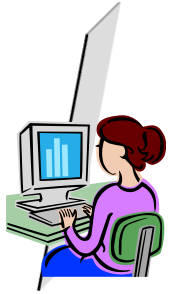
From March SW&C meeting

Kaushik De, ProdSys2 overview and status, SW&C week, June 12, 2013



ProdSys1.5

Production
Manager
Submits Tasks

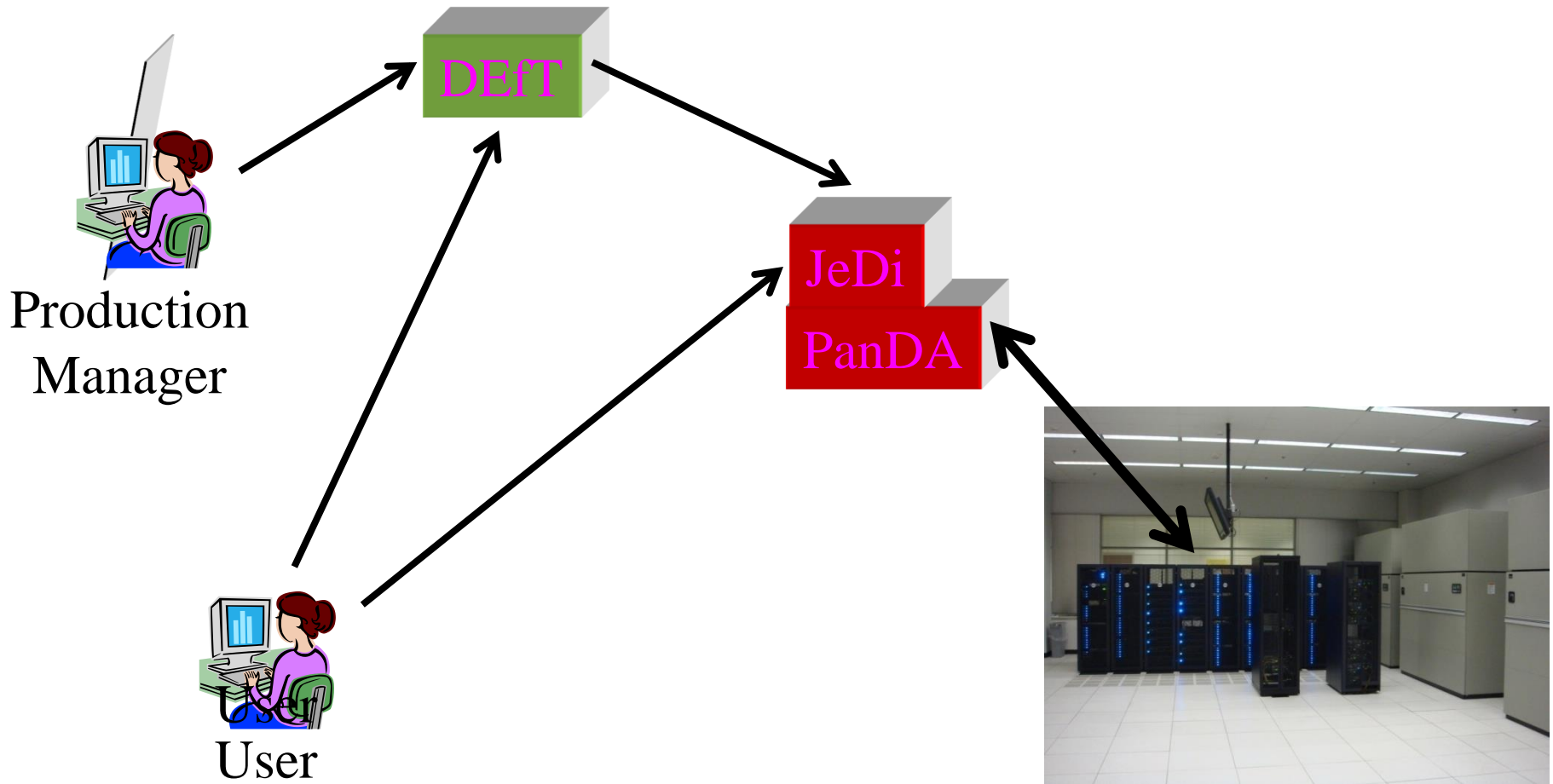


User





ProdSys2





Manpower. ProdSys2 Team

- Overall Coordination : K.De, A.Klimentov
- JEDI : development, testing deployment : T.Maeno

- DEFT

- ◆ Architecture, integration with JEDI : M.Potekhin
- ◆ Coding, implementation : D.Golubkov (Protvino)
- ◆ Database : G.Dimitrov, M.Potekhin, T.Maeno
- ◆ ProdSys1/ProdSys2 transition, commissioning and validation : A.Vaniachine
- ◆ Deployment, converter to JEDI-αβγ : D.Golubkov (Protvino)
- ◆ WEB UI – D.Golubkov
- ◆ Group Production I/F : A.Stradling

Presented at US ATLAS
Physics Support & Computing
budget scrubbing meeting at BNL
July 24, 2013

People supported by US ATLAS Ops
Supported from other funds

- Monitoring

- ◆ JEDI/DEFT : V.Fine

- PanDA instance at CERN and validation : S.Baranov

FY13 Request Beyond Target (approved)

1 FTE ProdSys2 core SW development.

M.Potekhin (0.5 FTE)

D.Golubkov (starting from Nov 2013, 0.5 FTE)

*... our plan and
manpower allocation
have been approved
by US ATLAS
Management*



News since July 24th

- Aug 9. Request from US ATLAS DOPM
 - ◆ *“Please do not start spending money or commit yourself until I have a chance to reply tomorrow. We are in dire straits.”*
- Aug 15. Message from US ATLAS PSC Coordinator
 - ◆ *“...the cuts we have to deal with are greater than previously thought. At a minimum we have to have impact statements conveying the pain that the cuts would inflict. We had an emergency management meeting today about it...”*
- Aug 16 notes (meeting with ATLAS Computing Coordinator)
 - ◆ ProdSys2 is a vital component of ATLAS Distributed Computing. It is on its critical path.
 - ◆ AMMSG will need a working ProdSys2
 - ◆ ProdSys2 is US ATLAS Computing Project
 - ◆ ProdSys2 should be in production before Run2
 - ◆ ProdSys2 development support by the ATLAS collaboration was discussed



Today's meeting goals

- Review situation with manpower
- Review ProdSys2 tasks list
- Review ProdSys2 timeline
- Review JEDI- α / ProdSys1.5 plan

- New plan will be presented at US ATLAS SW planning meeting at UTA, Sep 5.



Manpower

Minimal scenario*

| | FTE | Period | Total months |
|----------------------------|-----|-----------|--------------|
| S.Gayazov ¹ | | Sep - Oct | 2 months |
| D.Golubkov ² | | Sep - Nov | 3 months |
| T.Maeno ³ | 0,5 | Aug - Jul | 6 months |
| M.Potekhin | 0,5 | Aug - Jul | 6 months |
| J.Schovancova ⁴ | 0,2 | Oct - Jul | 2 months |
| A.Stradling | 0,2 | Aug - Jul | 2.5 months |
| A.Vaniachine ⁵ | 0,5 | Aug - Jul | 6 months |

*) Fraction of V.Fine will be used for monitoring

Fraction of S.Baranov can be used for deployment, validation and testing

1,2) IHEP (Protvino) funding and ATLAS funding 2 +1 months

BINP (Novosibirsk) funding for 2 months

- ◆ 2014 RF funding will be known NET Feb 2014

3) + 0.5 FTE Distributed Analysis, ProdSys/Bamboo/PanDA support

4) NOT presented/approved yet by US ATLAS Management

5) FTE fraction can be increased, TBD with ADC GDP and US ATLAS PCS Manager



ProdSys2 Tasks

- JEDI core
- DEFT core
- JEDI-DEFT integration
- JEDI-Alpha
 - ◆ AKTR – DEFT / JEDI-Alpha converter
- ProdSys/PanDA infrastructure at CERN
- ProdSys2 / AMI / AGIS / DDM issues
 - ◆ DEFT
 - ◆ JEDI
- Web Manager and User I/F
 - ◆ Web design (framework)
 - ◆ Meta-task monitoring pages
 - ◆ Task monitoring pages
 - ◆ Jobs monitoring
 - ◆ Production Managers Control pages
- Meta-tasks, tasks postproduction managing
- Documentation
- SW repositories
-