

Internet Access

Wifi SSID: CERN or CERNa

Start your browser, fill out a Network connection form

For contact person information:

Laurie Hemery -OR- Rama Calaga

CERN Department; BE

CERN Group: RF

We will try to approve ASAP

Network Connection Request Form .

[Network Connection Request Forms - External Visitor's Computer Registration](#)

Consult the ["Portable computers at CERN: Visitors"](#) page for more information

You intend to visit CERN, and want to make use of the CERN network infrastructure with a Portable PC or MAC you will [bring with you](#) onsite. Before you can get access to the CERN network, you need to fill this form and get approval from your CERN contact person (CERN staff, fellow or contract personnel).

During your stay, you are required to follow the "CERN Rules and Regulations", available by [CLICKING HERE](#).

Please fill in requested fields. Mandatory fields are marked with (*). Please do not forget to submit your request by selecting the "Send Request" button at the end of this page. [HELP](#) is available by selecting the links on this page.

Please do not use this form if you are a CERN employee, if this is the case you should use the Register Portable facility of the Network Request web interface.

Personal Visitor's Details:

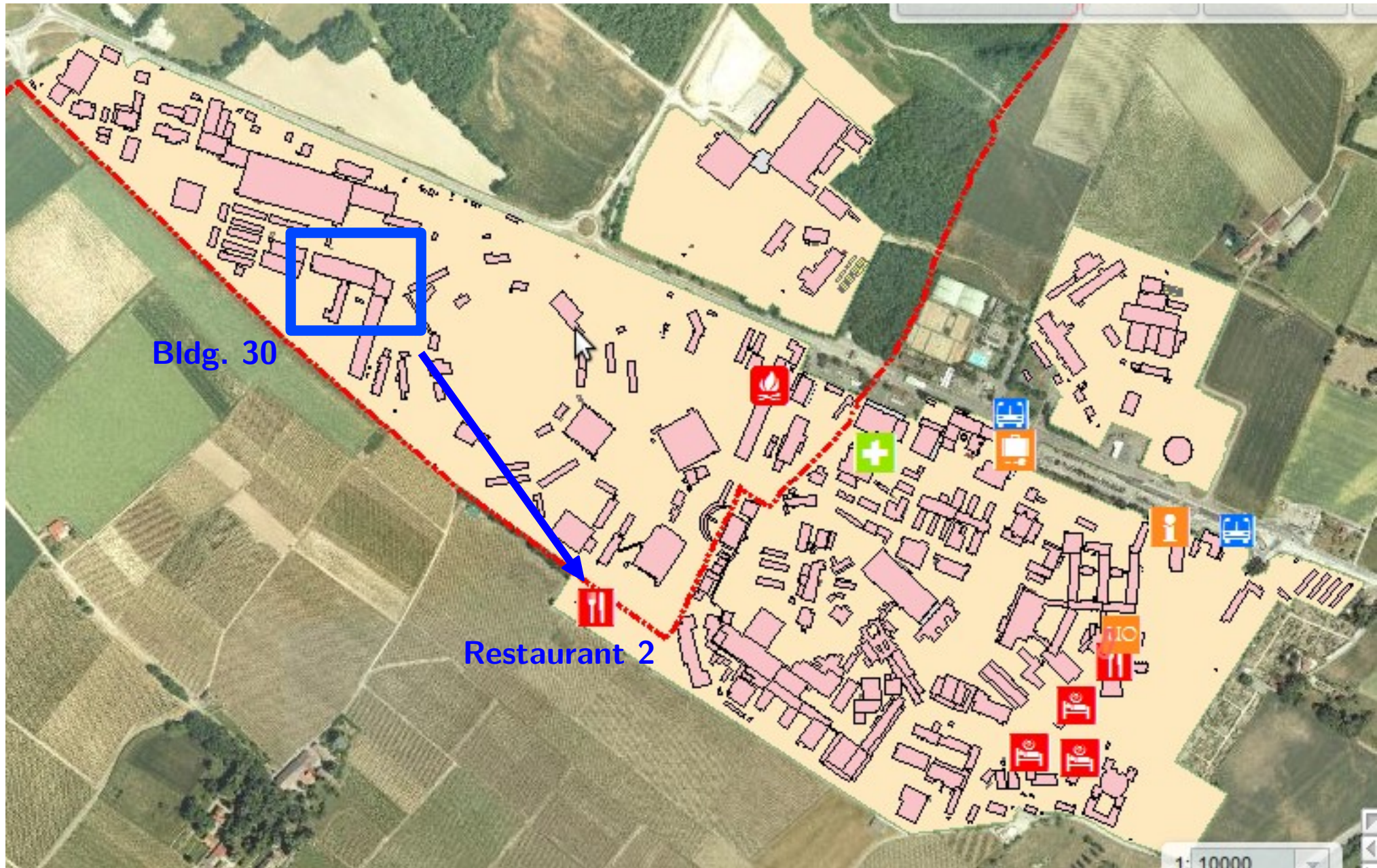
• Name(*):	<input type="text"/>	• First Name(*):	<input type="text"/>
• Company/Institute(*):	<input type="text"/>		
• Phone (*):	<input type="text"/>	• E-mail(*):	<input type="text"/>

(Mobile if possible; please provide all necessary international prefixes)

Visit's Details:

• Arrival Date(*):	<input type="text"/>	• Length of your stay(*):	1 week
• Reason for the visit(*):	<input type="text"/>		

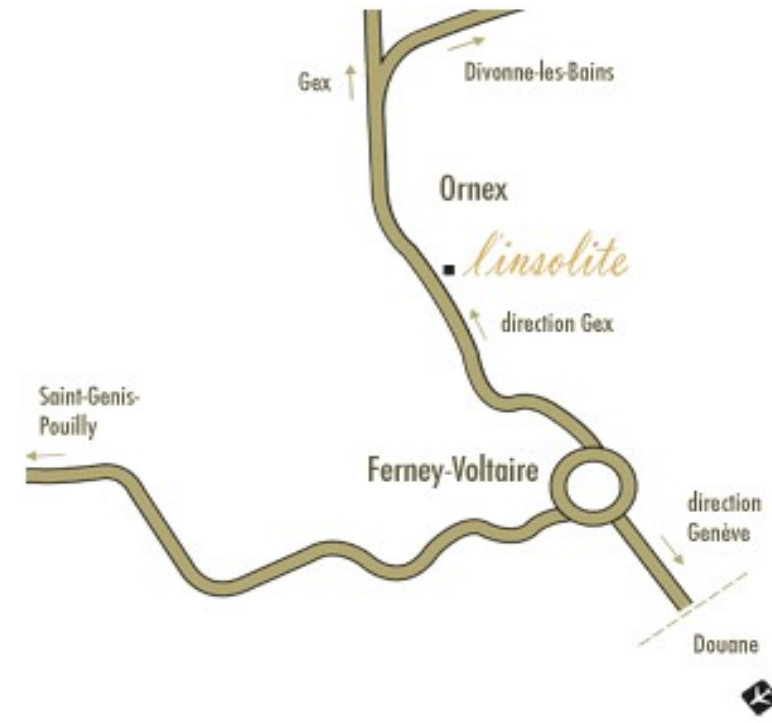
Lunch: Restaurant 2 Closest



Dinner: Dec 10 - Tuesday

The workshop dinner at the restaurant **l'Insolite** in Ornex.

Transport: **Bldg.39/40** at 19:00 for external visitors



AB Meeting & Wednesday Sessions

Workshop is officially finished Tuesday evening

- Advisory board meeting with session chairs 17:30-18:30

Wednesday is reserved for technical/collaboration discussions:

- Develop cavity evaluation criteria
- Common cavity-cryomodule interfaces
- Safety standards & regulations
- Common repositories for technical data
- Schedule