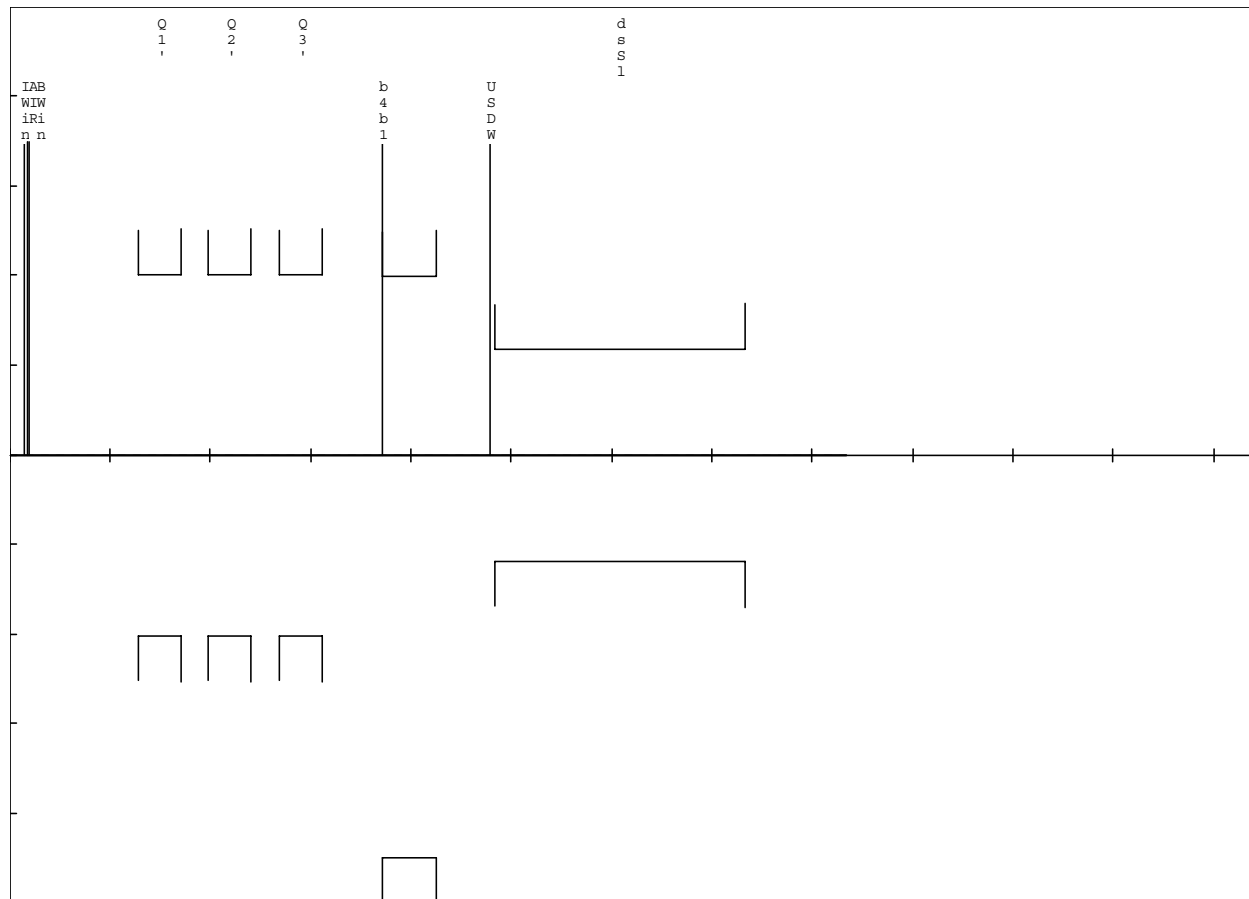


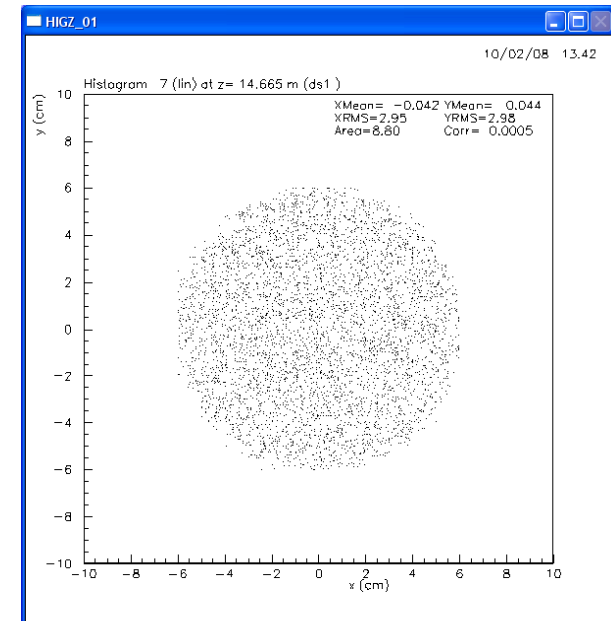
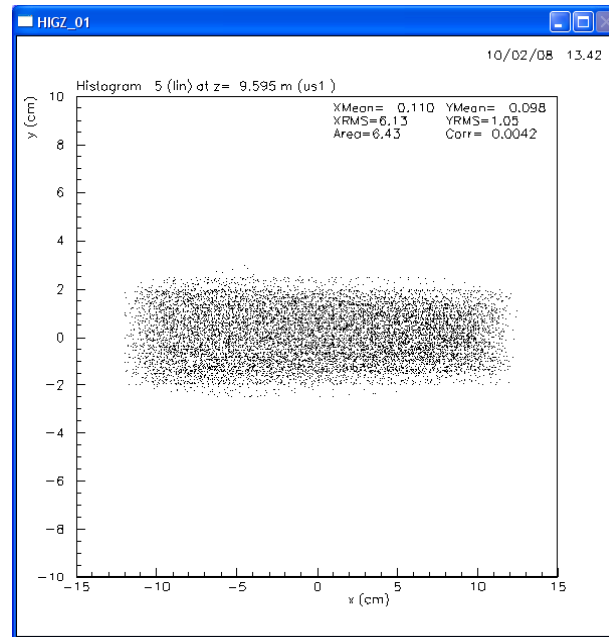
Some interim results. Can we probe vertical misalignment at IC1 & IC2?



# Some interim results. Can we probe vertical misalignment at IC1 & IC2?

Scenario: Quad axis was redesigned for 38mm.  
Postulate +/-5mm error on above figure.  
If need to go to 33mm ( $dy=-5\text{mm}$ ).  
Can we tell with optics & detectors if our target/optics axis misaligned?

Some interim results. Can we probe vertical misalignment at IC1 & IC2.  
All quads Q1,2,3 off



Some interim results. Can we probe vertical misalignment at IC1 & IC2.  
Q1 on (DQd oddly enough)

