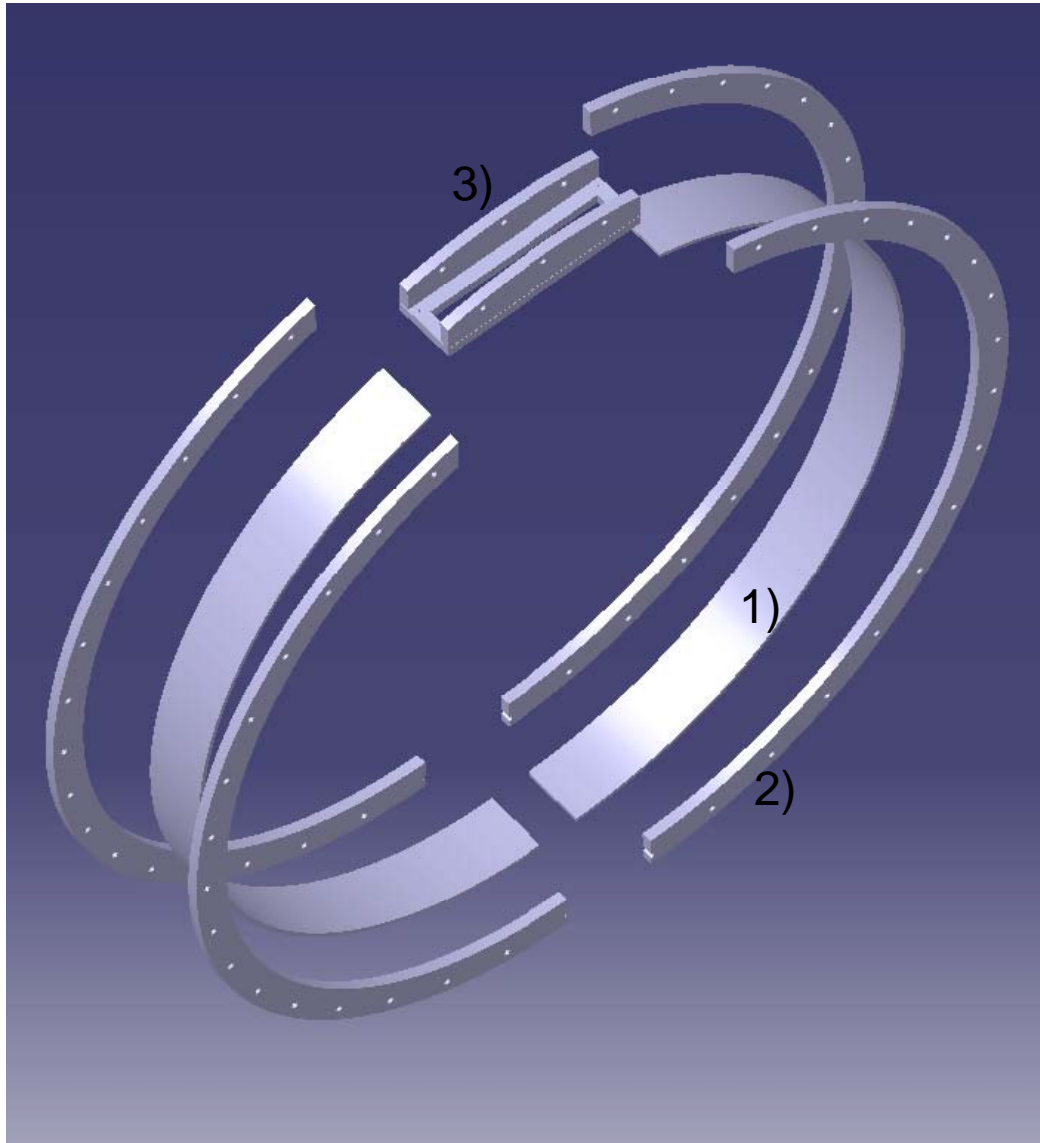


MICE SPOOL PIECE



Proposed design and fabrication DPNC Uni-GE

SPOOL PIECE LAYOUT TB-0049-858-00-A

Material: St Steel 1.4301 (304)

Proposed method of construction

- 1) Roll 120x8 or 120 x10 flat profile to shape
- 2) Roll 60x20 flat profile to form the flanges
- 3) Manufacture the window flange
 - Either from solid
 - Either welded from flats + machined
- 4) Weld parts together
- 5) Final machining
 - Endfaces, holes
 - Window flat surface

DESIGN LIMITATIONS

Window size (opening) 410mm x 45 mm

410 is OK

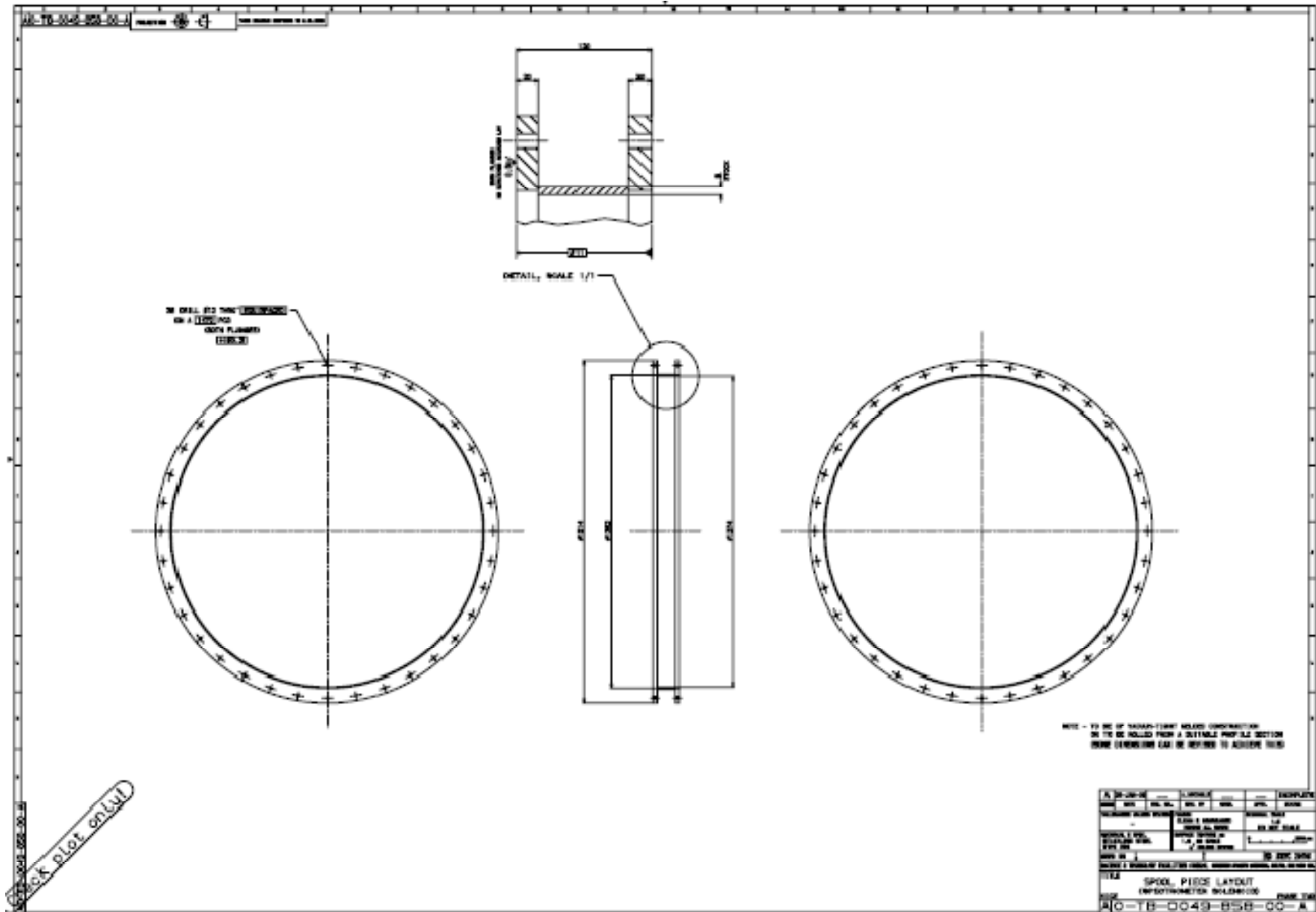
45 mm cannot be made wider without making things and sealing more complicated.

Would two opposed windows at 180° solve the problem ?

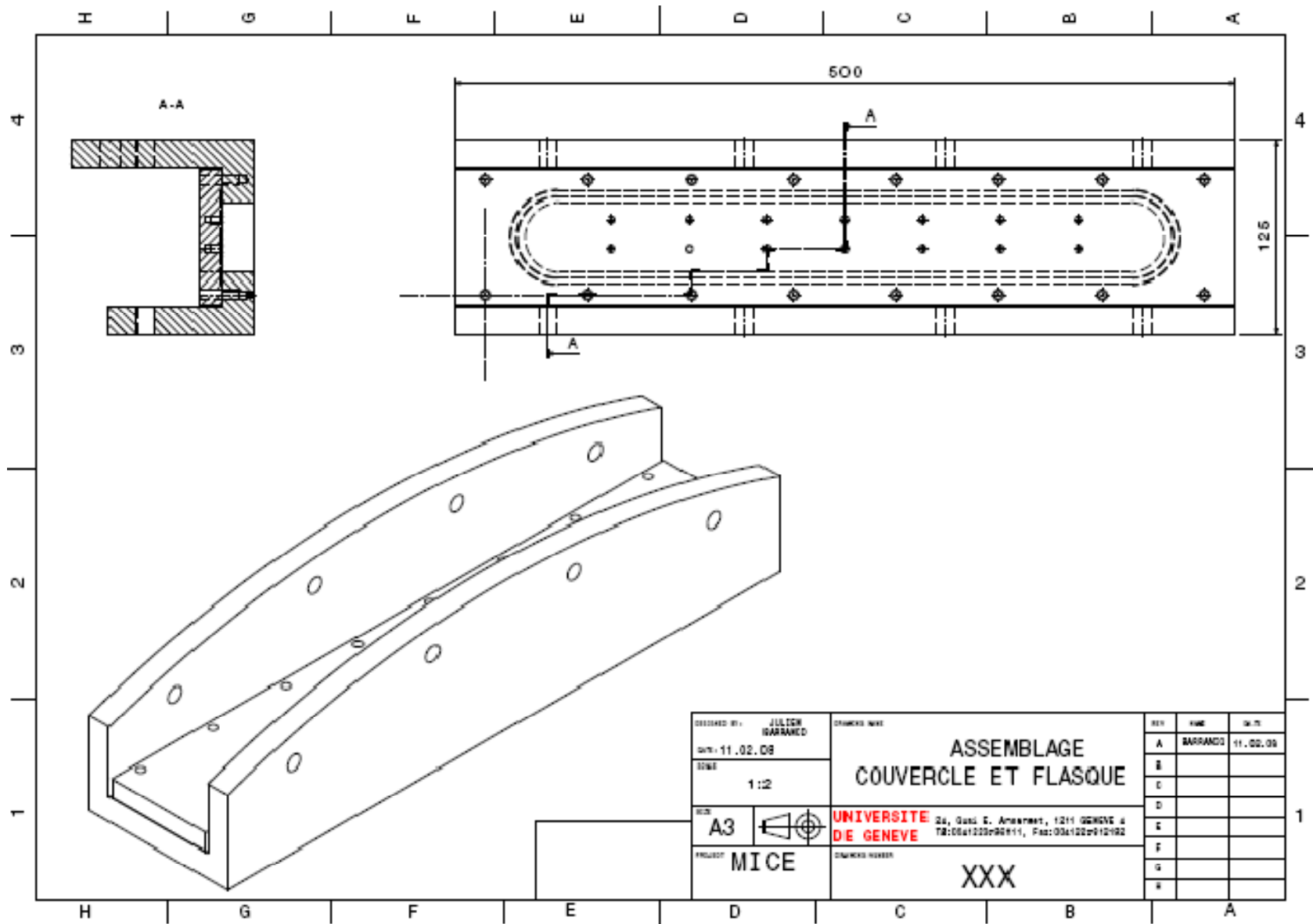
PROPOSED CHANGES

Axial length 120mm → 125mm OK?

Lay-out drawing by Andy Nichols



Proposed window flange O'ring (3.5mm dia) groove in lid
 Window flange either welded + machined or machined from solid before being welded to the other parts.



DESIGNED BY: JULIEN BARRACLOUGH	DRAWING NO.:	REV:	DATE:
DATE: 11.02.09	ASSEMBLAGE COUVERCLE ET FLASQUE	A	BARRACLOUGH 11.02.09
SCALE: 1:2		B	
SIZE: A3	UNIVERSITE DE GENEVE 24, Quai E. Ansermet, 1211 GENEVE 4 Tel:0041222908111, Fax:0041222912192	C	
PROJECT: MICE		D	
		E	
		F	
		G	
	XXX	H	