

UMD 2 / EMI 2 Decommissioning Status

Cristina Aiftimiei
EGI.eu

- UMD 2:
 - Decommissioning Calendar
 - Status Update



Decommissioning Calendar

- **EMI 2 EOL– April 2014**
- Since Nov. 2013 – raise the awareness of the approaching End of Security Support of UMD(EMI) 2 services and the need to plan a massive decommissioning/migration process:
- Official Calendar
 - [https://wiki.egi.eu/wiki/Software Retirement Calendar%23EMI 2](https://wiki.egi.eu/wiki/Software_Retirement_Calendar%23EMI_2)
 - **end of Jan 2014**
 - **05/02/2014** - broadcast was sent to sites
 - <https://operations-portal.egi.eu/broadcast/archive/id/1080>
 - ROD alarm template was provided:
 - [https://wiki.egi.eu/wiki/ROD MW alarm template%23EMI 2 retirement campaign](https://wiki.egi.eu/wiki/ROD_MW_alarm_template%23EMI_2_retirement_campaign)
 - And the list of affected middleware versions
 - **end of Feb. 2014**
 - **12/03/2014** – started to raise alarms for UMD 2 services
 - https://ggus.eu/?mode=ticket_info&ticket_id=101888
 - description of SAM probes was provided
 - [https://wiki.egi.eu/wiki/MW Nagios tests%23EMI-2 tests](https://wiki.egi.eu/wiki/MW_Nagios_tests%23EMI-2_tests)
 - **end of May 2014** - *possible* suspension of sites providing unsupported services

Status Update

- Number of instances to be decommissioned:

Service Type	As of March 7 th	As of April 7 th
ARC-CE	11*	0
BDII_site	159	68
CREAM	220	87
DPM	127	61
StoRM	4	2
VOMS	9	7
WMS	7	6
Sites with WNs	130	90

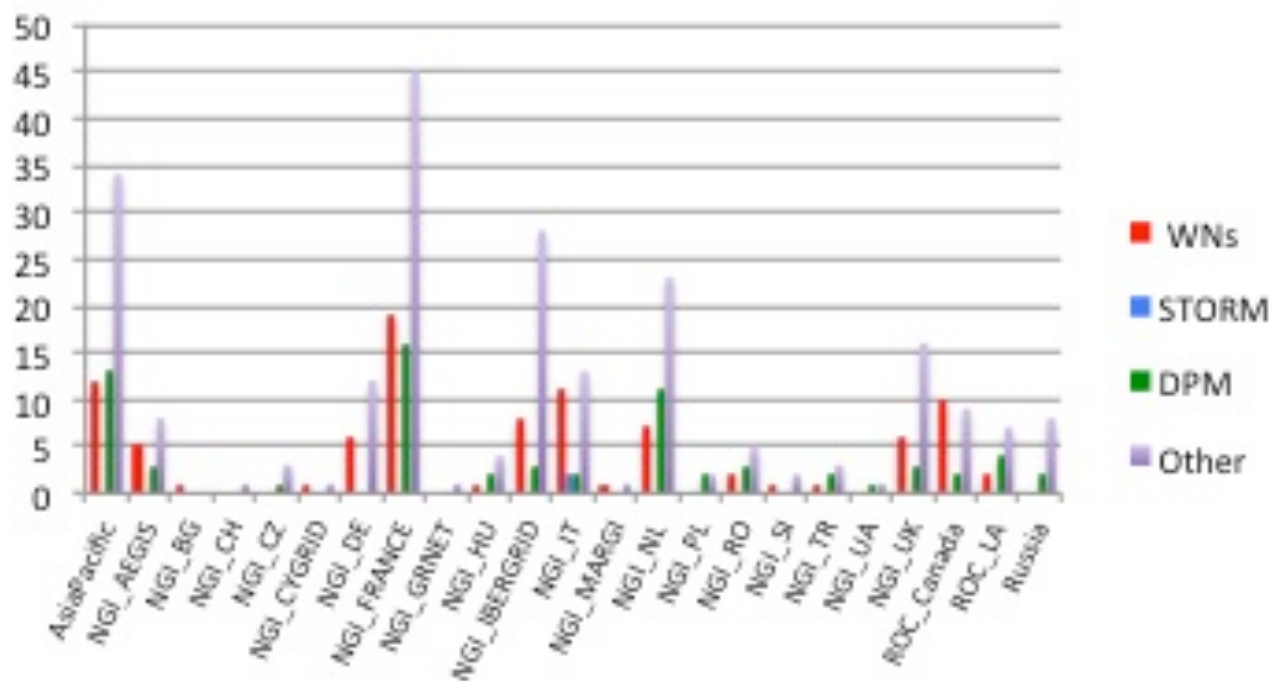


UMD2 Relevant Services

- Relevant services:
 - using specific SAM probes
 - ARC, DPM, STORM, WN
 - using generic SAM probe (MiddlewareVersion=2.*)
 - ARGUS, BDII, CREAM, LB, LFC, MyProxy, VOMS, WMS
- Exception:
 - dCache 2.2.x supported until July 2014

No of endpoints per NGI

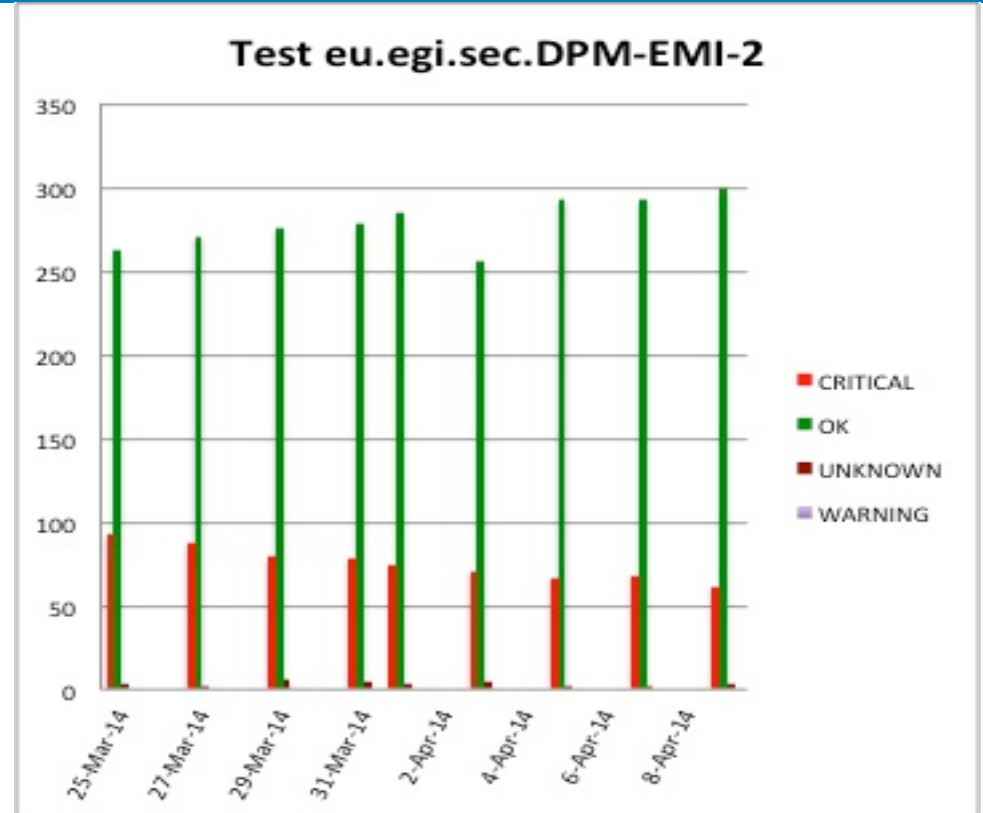
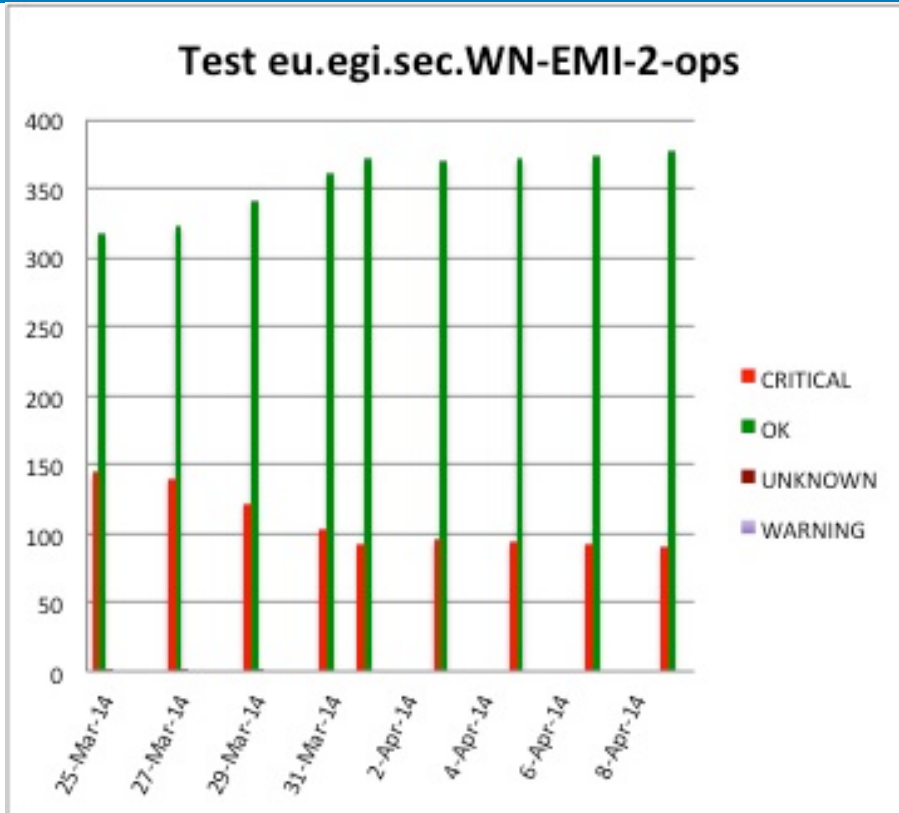
EMI 2 - endpoints



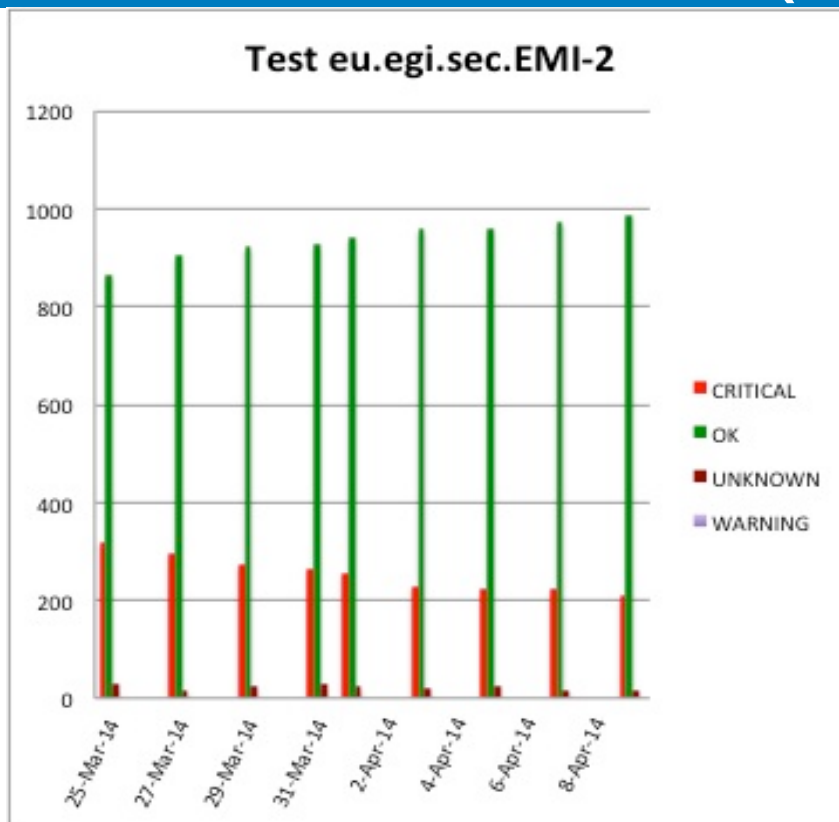
Ref:

http://bit.ly/EMI2_NGI_07042014

Trends (I)



Trends (II)



- ON schedule
- Sites are responsive and no blocking issues were reported