

# UMD 2 Decommissioning Status

Cristina Aiftimiei  
EGI.eu

- UMD 2:
  - Decommissioning Calendar
  - Status Update

- **UMD 2 EOL – April 2014**
- Since Nov. 2013 – raise the awareness of the approaching End of Security Support of UMD(EMI) 2 services and the need to plan a massive decommissioning/migration process:
- Official Calendar
  - [https://wiki.egi.eu/wiki/Software Retirement Calendar%23EMI 2](https://wiki.egi.eu/wiki/Software_Retirement_Calendar%23EMI_2)
  - **end of Jan 2014**
    - **05/02/2014** - broadcast was sent to sites
      - <https://operations-portal.egi.eu/broadcast/archive/id/1080>
    - ROD alarm template was provided:
      - [https://wiki.egi.eu/wiki/ROD\\_MW\\_alarm\\_template%23EMI\\_2\\_retirement\\_campaign](https://wiki.egi.eu/wiki/ROD_MW_alarm_template%23EMI_2_retirement_campaign)
    - And the list of affected middleware versions
  - **end of Feb. 2014**
    - **12/03/2014** – started to raise alarms for UMD 2 services
      - [https://ggus.eu/?mode=ticket\\_info&ticket\\_id=101888](https://ggus.eu/?mode=ticket_info&ticket_id=101888)
    - description of SAM probes was provided
      - [https://wiki.egi.eu/wiki/MW\\_Nagios\\_tests%23EMI-2\\_tests](https://wiki.egi.eu/wiki/MW_Nagios_tests%23EMI-2_tests)
  - **end of May 2014**
    - Sites must open a downtime for the UMD-2 services (excluding dCache) still deployed. Sites who fail to do so are eligible for suspension
    - All sites should have reported upgrade or decommission plans for UMD-2 services in their tickets,
    - NGIs are encouraged to report problematic/unresponsive sites to EGI Operations in order to spot any blocking issue..

- Relevant services:
  - using specific SAM probes
    - ARC, DPM, STORM, WN
  - using generic SAM probe (MiddlewareVersion=2.\*)
    - APEL, ARGUS, BDII(site, top), CREAM, LB, LFC(local,central), MyProxy, VOMS, WMS
- Exception:
  - dCache 2.2.x supported until July 2014

- Number of instances to be decommissioned:

Service Type	As of March 7 <sup>th</sup>	As of April 23 <sup>th</sup>	As of May 14 <sup>th</sup>
ARC-CE	11*	0	0
BDII_site	159	41	29
CREAM	220	55	45
DPM	127	38	22
StoRM	4	2	2
VOMS	9	4	3
WMS	7	5	4
Sites with WNs	130	52	35

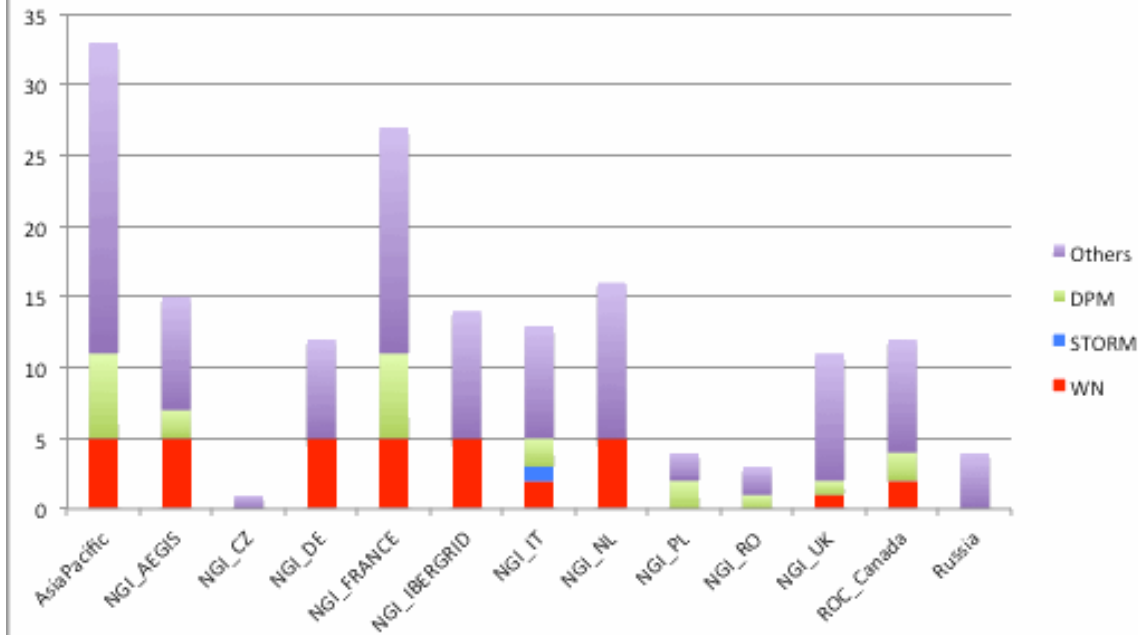
Reference:

[http://bit.ly/EMi2\\_services](http://bit.ly/EMi2_services)

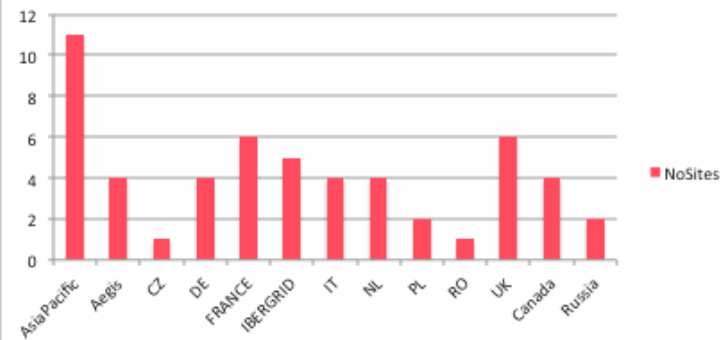
Other numbers:

- ARGUS – 4
- BDII top – 2
- LFC – 7 (4 local)

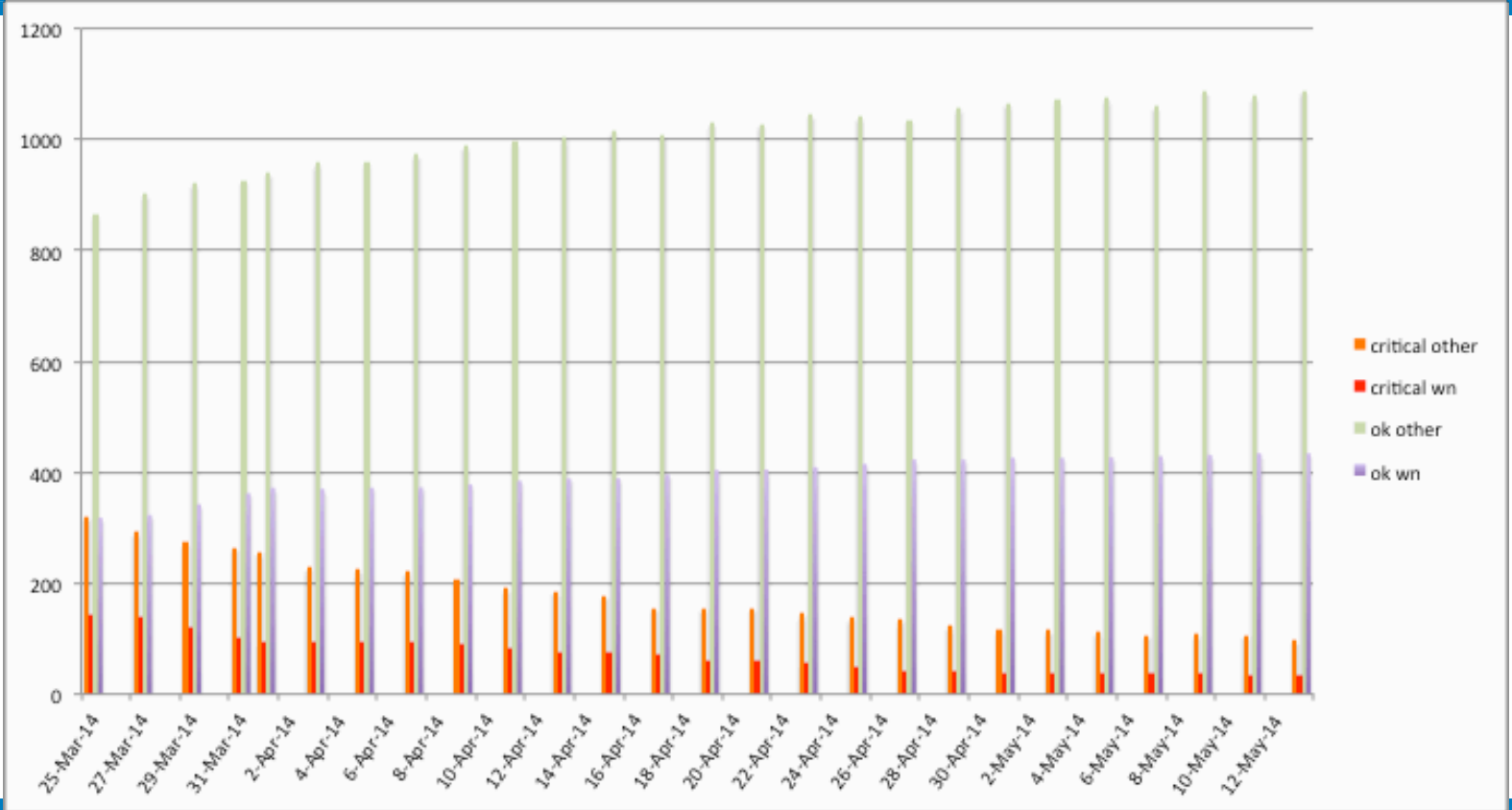
## UMD2 Endpoints - 14/05/2014



## NoSites/NGI



# Trends



- NGI were contacted in order to provide more information regarding the “late” sites
  - There are now ~9 NGIs with  $\geq 10$  UMD 2 services
  - By the end of the month sites with UMD 2 services should open downtimes
  - Notes from NGIs:
    - 1 issue reported after VOMS migration – [GGUS #104702](#)
    - Upgrade planned for week 12-16/05
    - Waiting for new hardware (2 site)
    - Most of sites – will upgrade by end of May