

ISOLDE: Status report building 508

68th ISCC meeting

CERN, 22 October 2013

Maria Borge, Erwin Siesling

- **Status new building 508:**
 - Progress on the demolishing / construction
 - What has changed in terms of building and layout
 - Progress on infrastructure
 - Costs and timeline

Progress during the summer after the removal of all equipment and items inside:

- Desamiantage – treatment of the asbestos parts in roof and floor 115, 601
- Declassification of 115 and 507
- Change of the access point
- Demolishing of 115, 601 and 507
- Demolishing of the 507 floor



A few things have changed for the construction and layout of the new building 508:

- On the first floor extra space for a new Isolde Control Room has been added (outside the classified area)
 - Advantages:
 - Outside the classified area but still on the facility's site
 - Ergonomic: daylight, windows to the outside
 - Enhances contact between users (DAQ rooms) and machine supervisors
 - Next to possible future TSR storage ring (commissioning and operations)
- The building will be a light structure, not modular cabins
 - Due to high pricing for non-standard cabins - Class C lab and T30 fire retarding material
 - New drawings structure done – re-designed concrete floor construction starts this week

Building 508 layout:

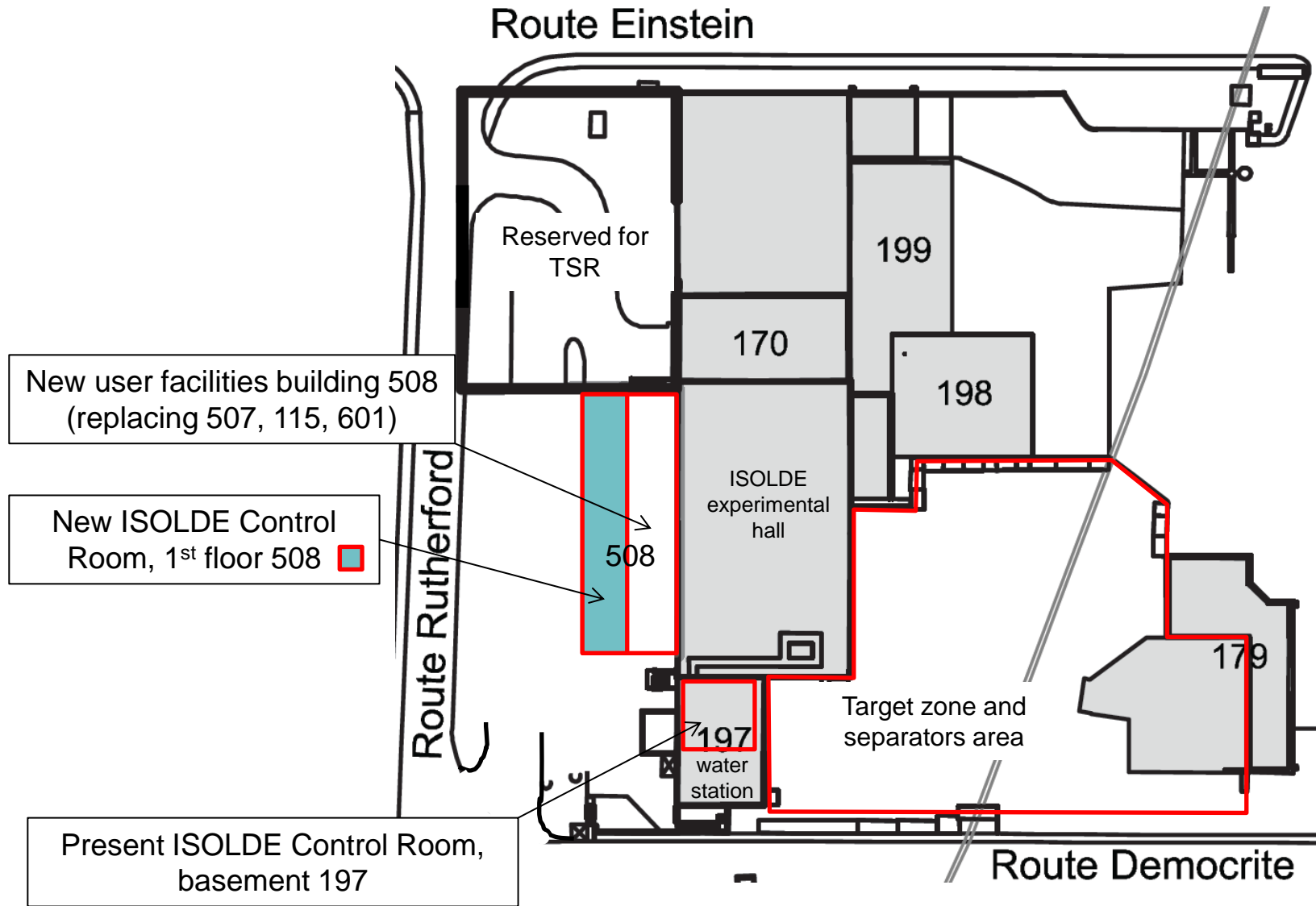
The new building 508 will be replacing the old user building 507, 601 and workshop/solid state lab 115. Light metal structure with 2 concrete floors: Total surface 864m²

Ground floor (only accessible from within the classified area): 432 m²

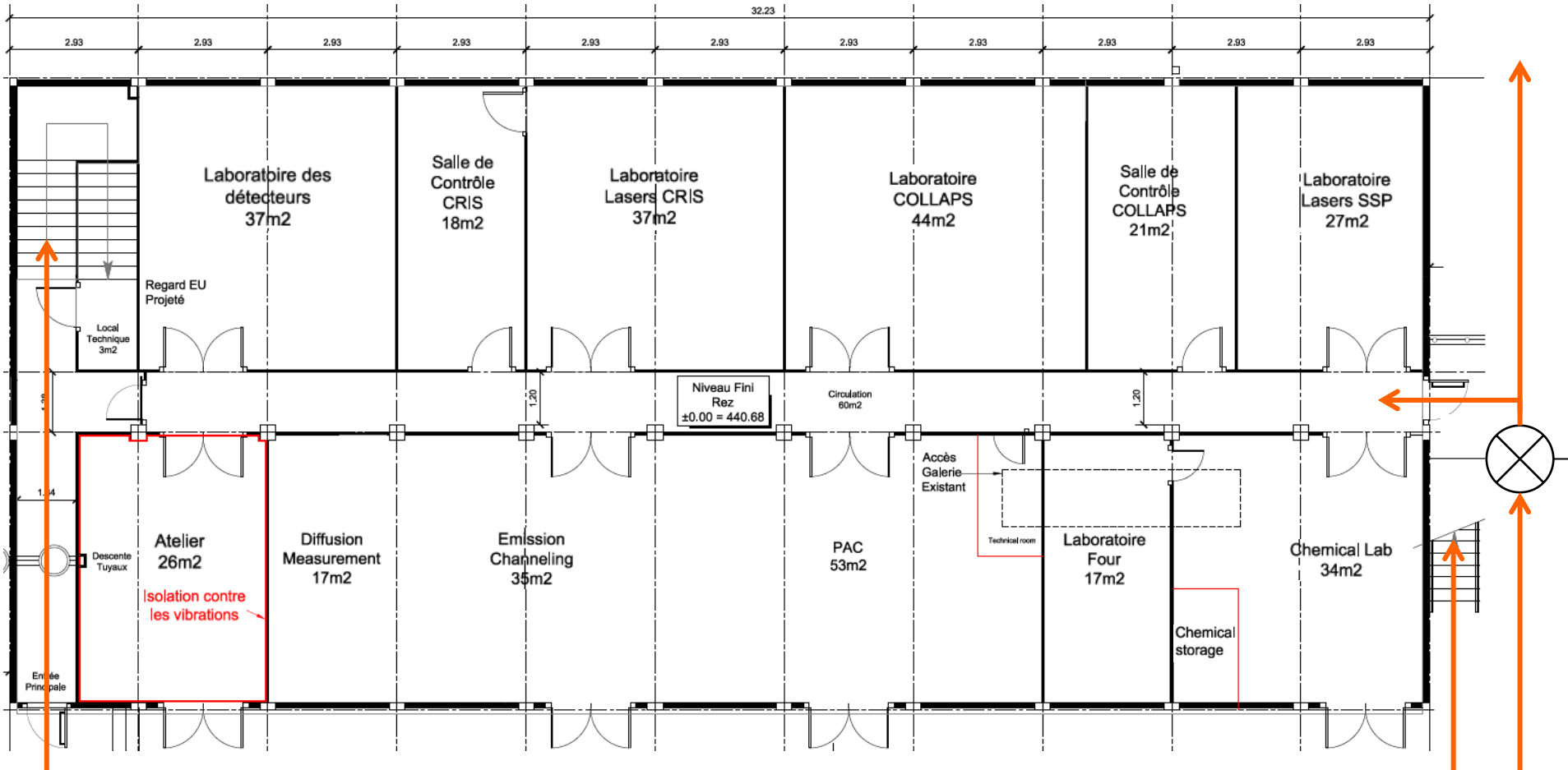
- Solid state, Laser labs and workshop

First floor (accessible from outside the classified area): 432m²

- Data Acquisition rooms
- Meeting room/Visitors Center
- Kitchen
- Isolde Control Room



Ground floor B508:



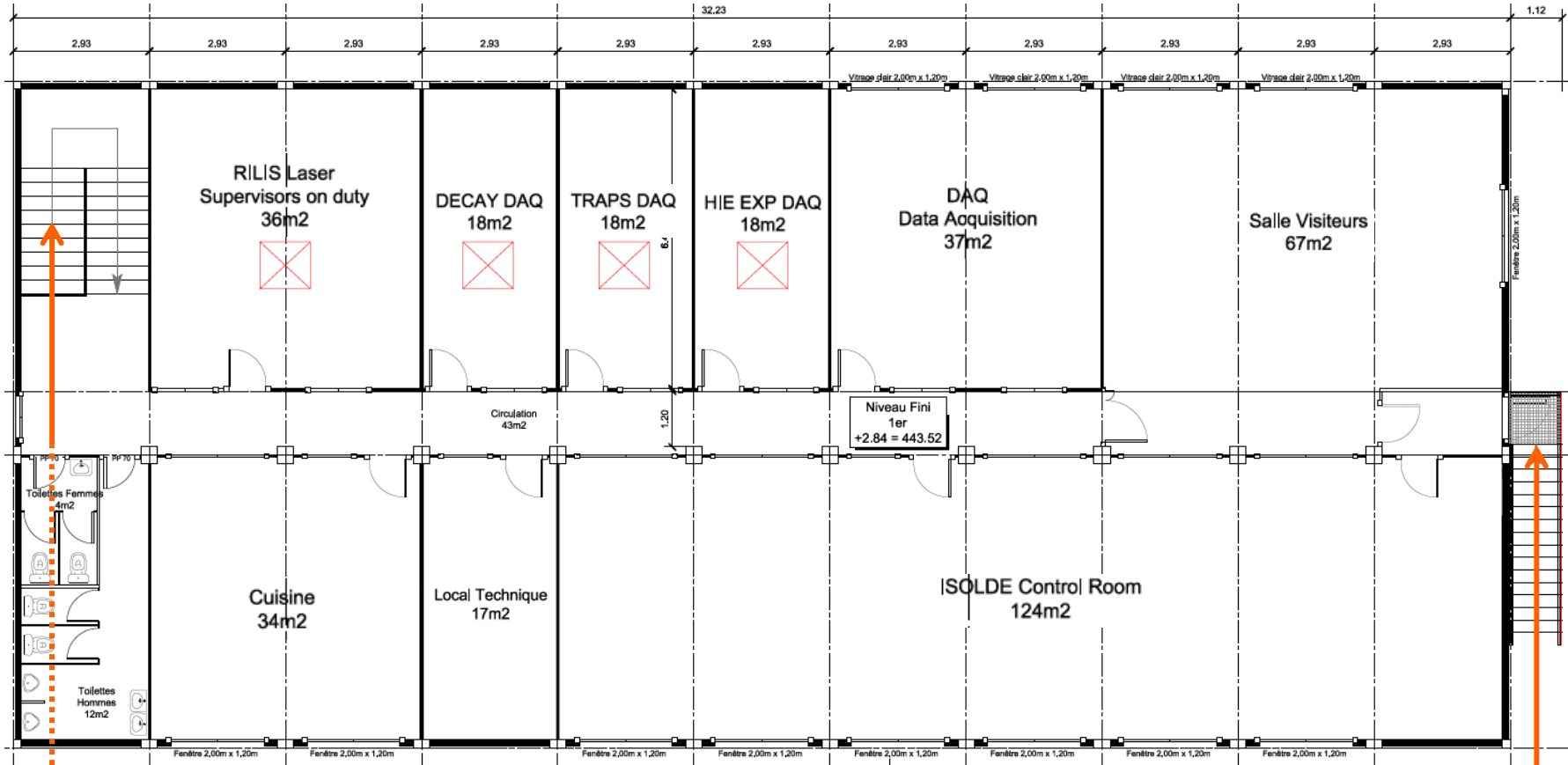
Access 1st floor

Access 1st floor

Controlled Access ground floor and Isolde hall

Surface nette 1er étage	: 432m ²
Surface nette rez de chaussée	: 432m ²
Surface nette totale	: 864m ²

1st floor B508:



Access 1st floor

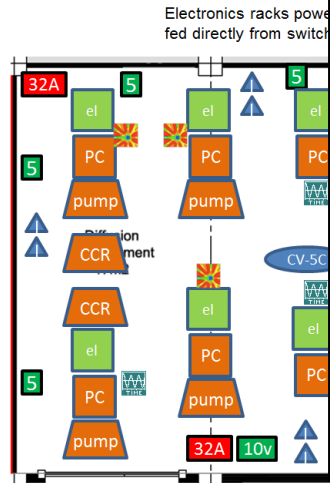
Access 1st floor

Surface nette 1er étage	: 432m ²
Surface nette rez de chaussée	: 432m ²
Surface nette totale	: 864m ²

Infrastructure:

- Needs for the users have/are being collected by Magda Kowalska
- Implementation by the different groups ongoing (EL, CV, IT)
- Finalized plans with regard to infrastructure to be ready asap (not as urgent as for the modular cabin solution)

	Yes/no (and #)
Power plugs (5 or 10)	Yes: 3
3phase plugs (X=16, 25, 32, 64 A)	Yes: 2
PCs	Yes: 5(?)
electronic racks	Yes: 4(?)
3 phase equipment	Yes
Standard <u>aircon</u> (5C stab.)	Yes
Special <u>aircon</u> (lasers)	No
Pressurized air	YBNAN
Signal cables from ISOLDE	No
Local <u>emerg.</u> switch	Yes
radiators	Yes
Water cooling	Yes
Network (2 plugs)	Yes: 6
Prepump exhaust	Yes
Gas connection	YBNAN(?)
Patch panel	No

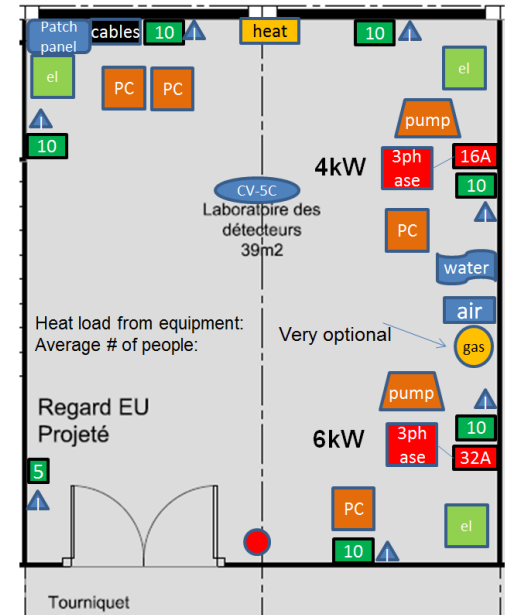


Closed cycle refrigerator / chiller	Yes: 3
-------------------------------------	--------

--	--

	Yes/no (and #)
Power plugs (5 or 10)	1,6
3phase plugs (X=16, 25, 32, 64 A)	1,0,1,0
PCs	4
electronic racks	3
3 phase equipment	2
Standard <u>aircon</u> (5C stab.)	1
Special <u>aircon</u> (lasers)	no
Pressurized air	yes
Signal cables from ISOLDE	10
Local <u>emerg.</u> switch	1
radiators	1
Water cooling	yes
Network (2 plugs)	7
Prepump exhaust	2
Gas connection	yes
Patch panel	yes

Detector lab



Courtesy Magda Kowalska

