

# HIE-ISOLDE

Status Report Installation works

ISOLDE Hall 170

68th ISCC meeting

CERN, 22 October 2013

Erwin Siesling on behalf of the HIE integration team

- **Status Report HIE Installation October 2013:**
  - Progress since the last SC meeting in April
  - Have there been or are there any delays
  - Are we on track with regard to the planning
  - What to expect for the next 6 months

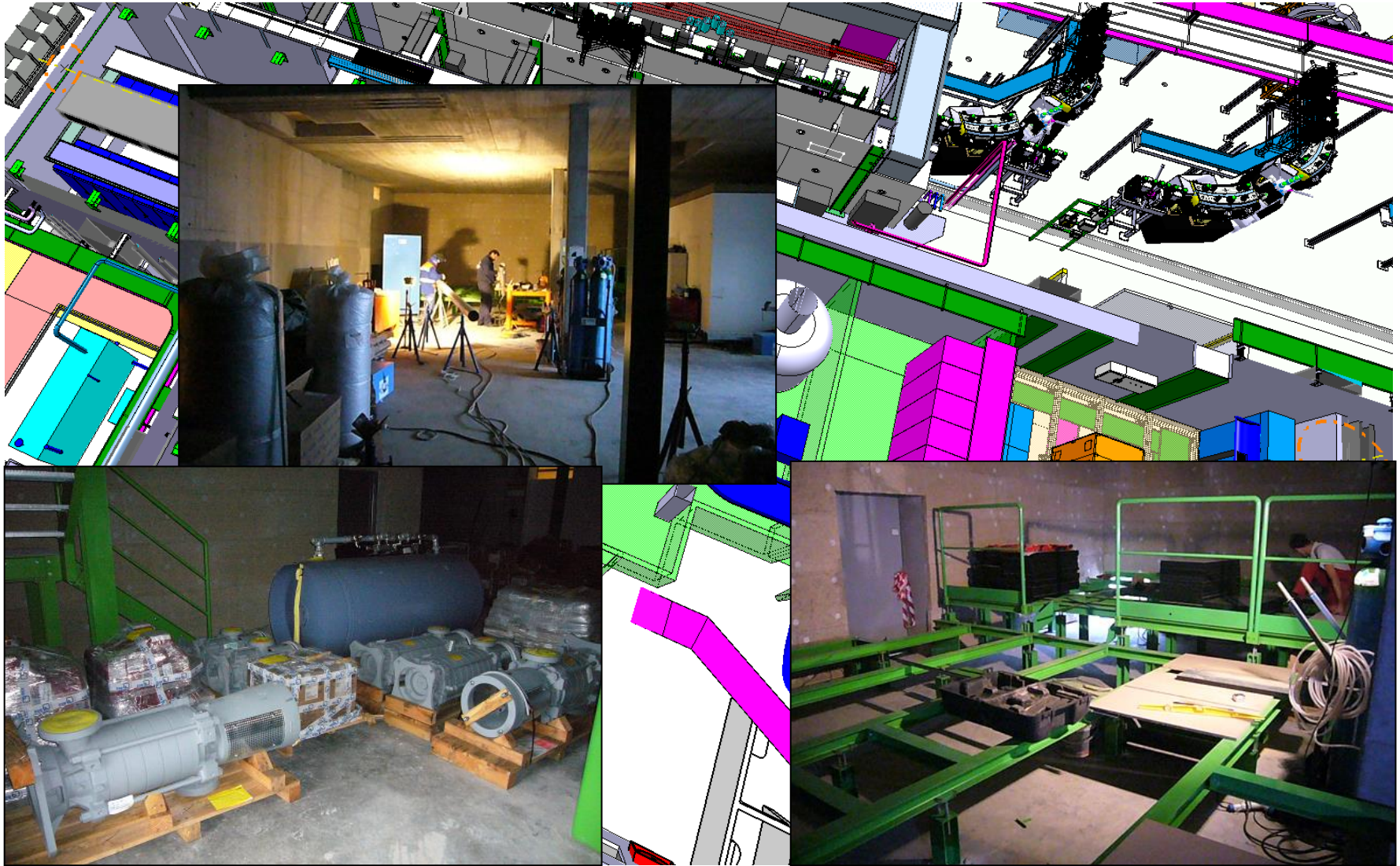




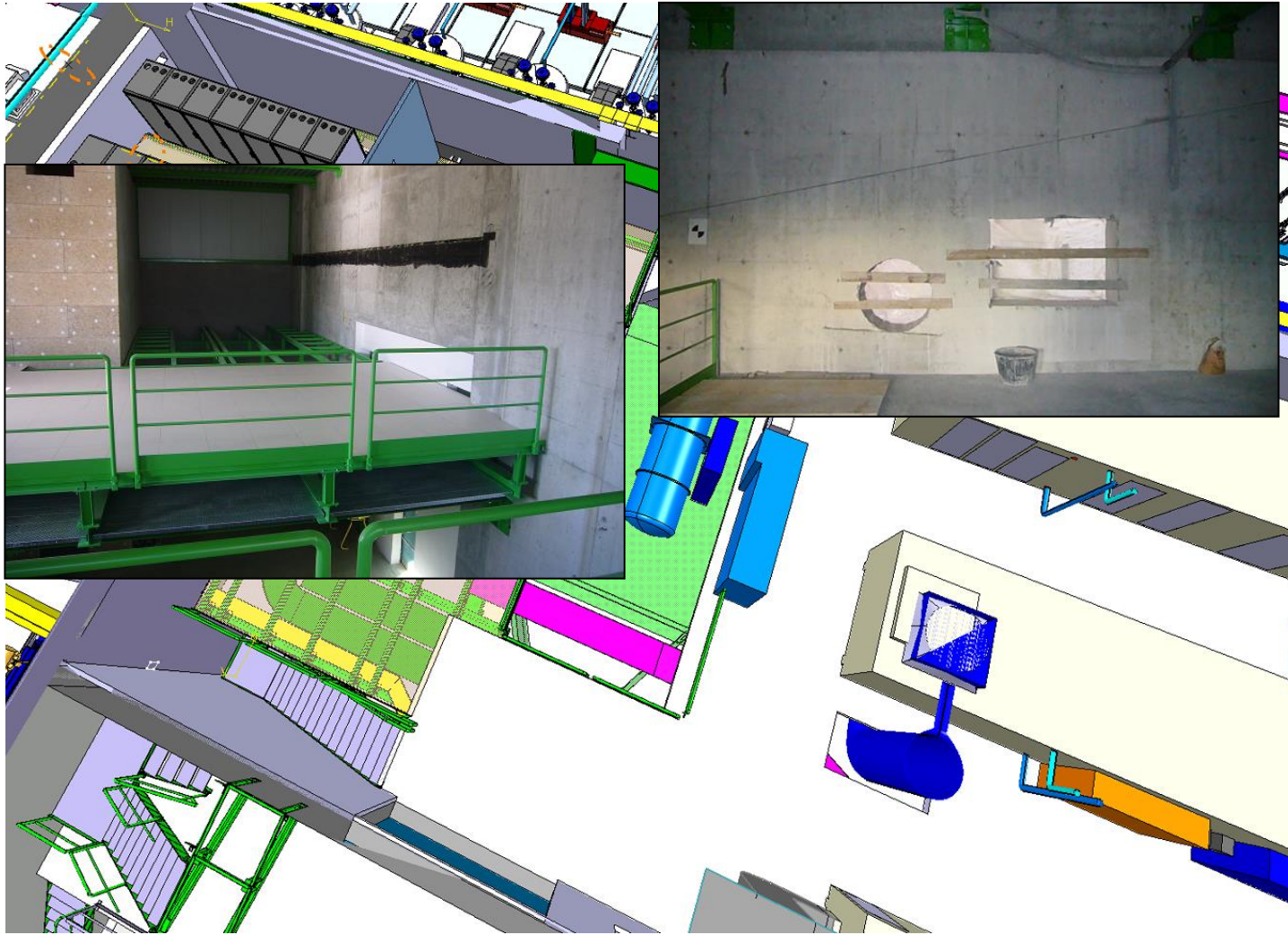
Cooling & ventilation:  
Cooling towers, Chillers and a large part of the tubing is in place 4



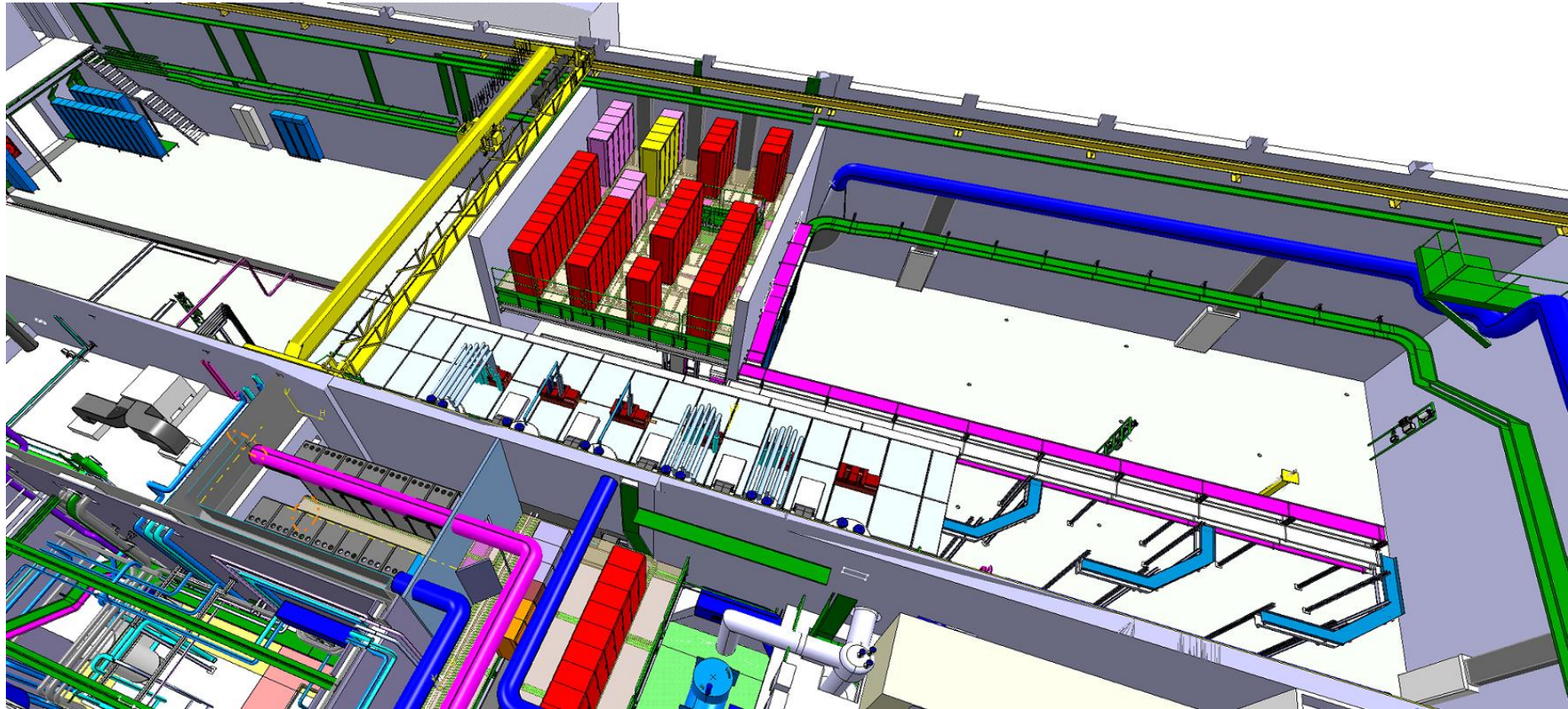
Cooling & ventilation and EL systems:  
Steel structures, Ventilation Unit, Electrical cabinets, Pumps and Piping in place as well as large parts of the ducts and cable trays



EL systems ground floor:  
 False floor structure in place for the 3.3kV (Compressors power) 6

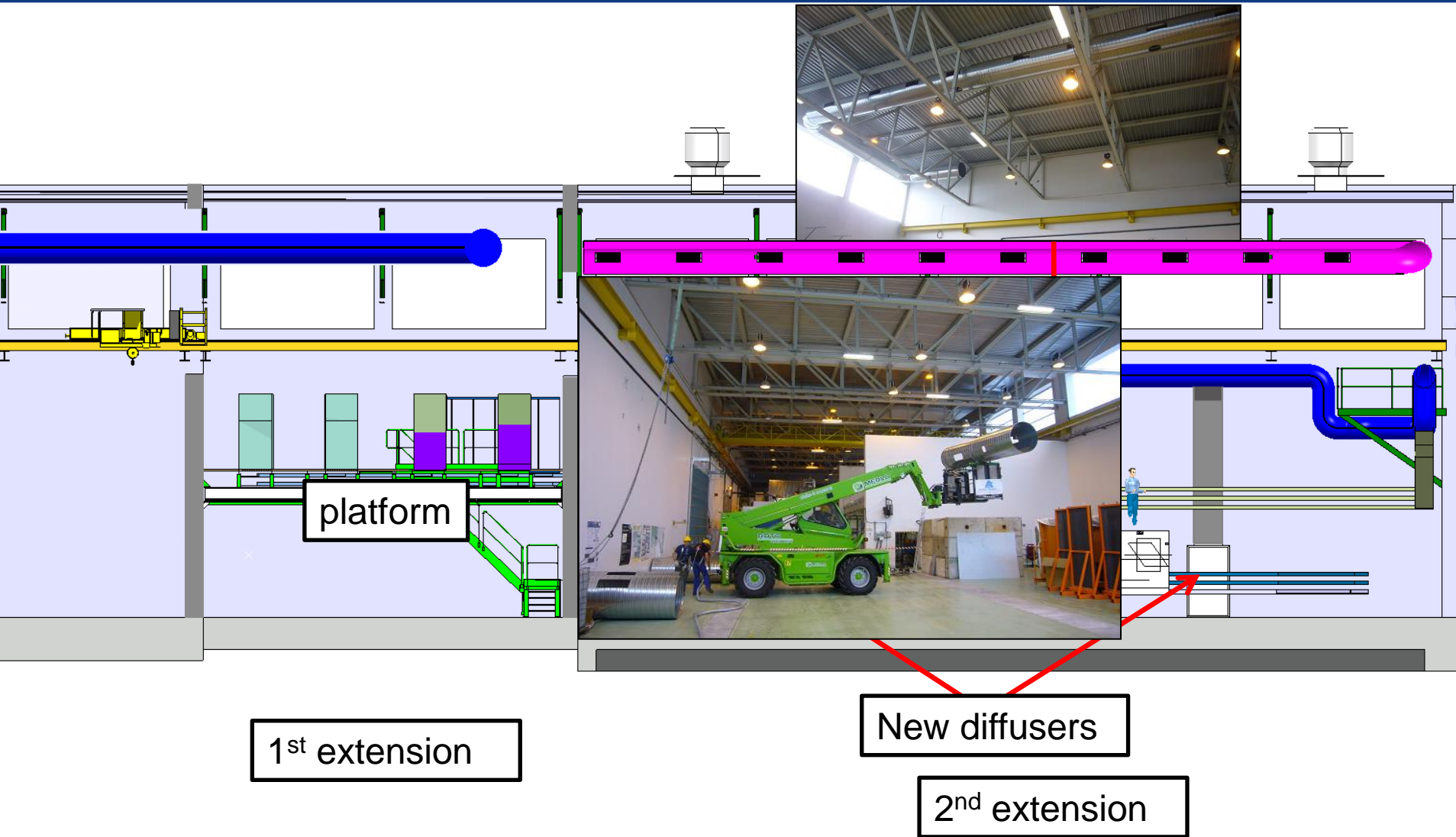


1st floor, metal structures and Civil Engineering:  
Plenum, false floor and reservations done



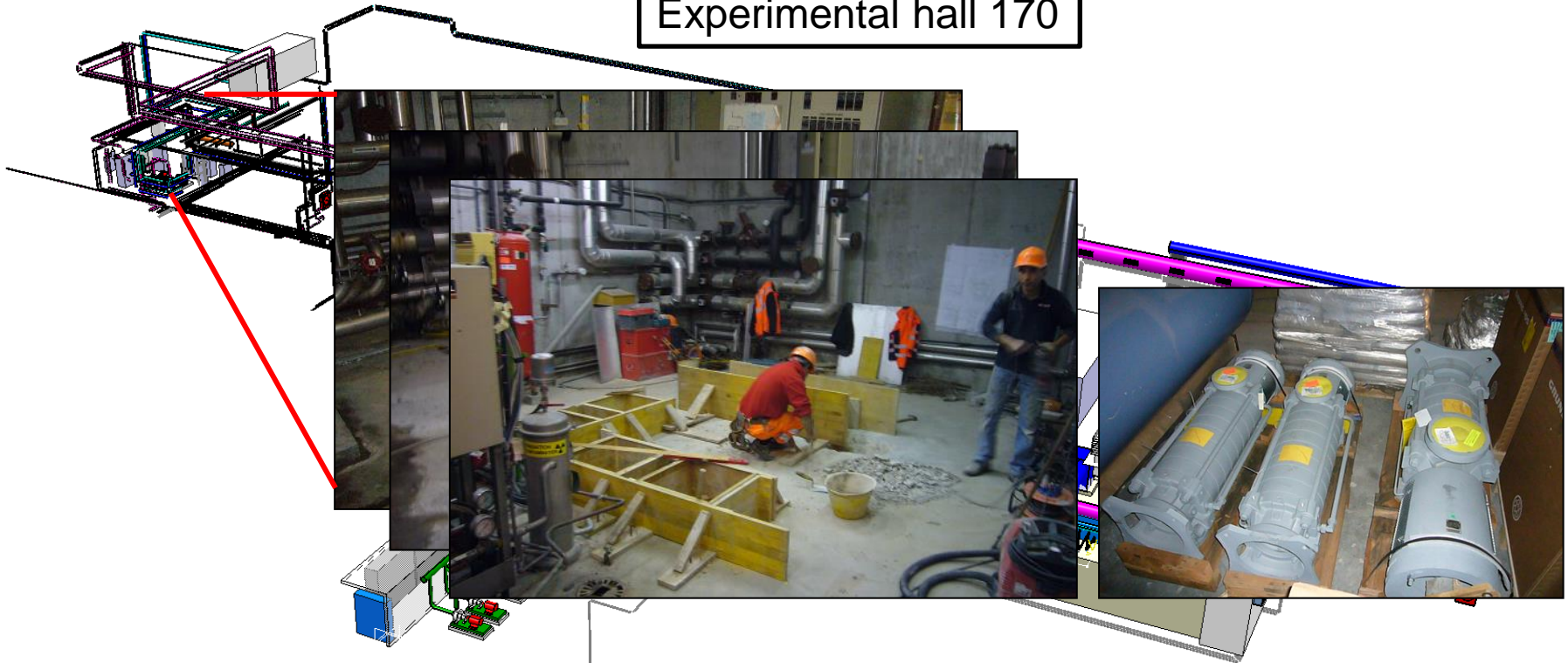
ISOLDE hall 170:  
Civil engineering, metal structures, cooling and ventilation





ISOLDE hall 170: Ventilation ducts put in place

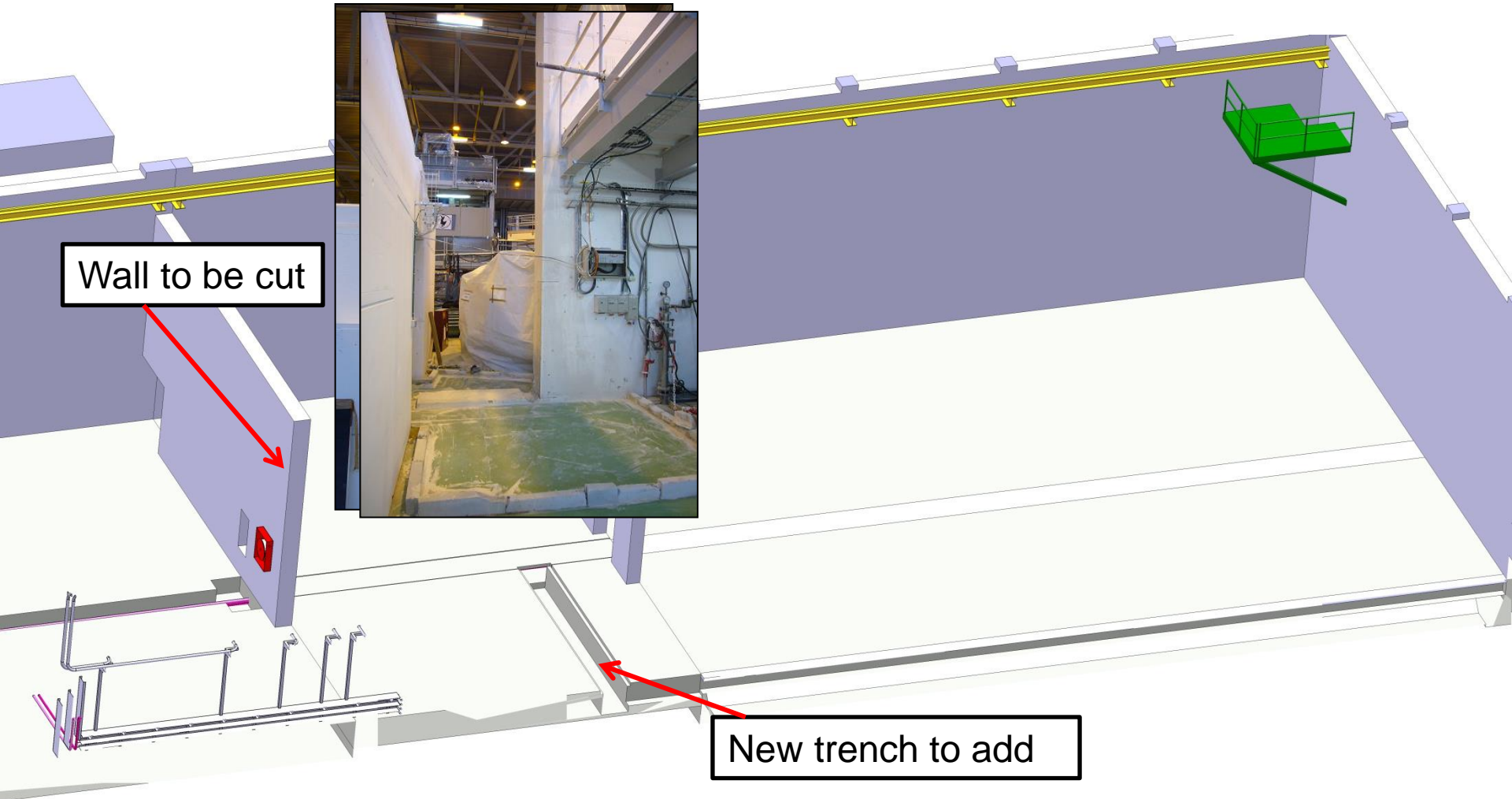
Experimental hall 170



B. 198 compressor building

B. 199 cold box building

ISOLDE water station:  
Old equipment removed, installation new pumps and piping started



Platform wall has been cut to provide free passage/access cryo modules: Cleaning campagne was organised to undust equipment

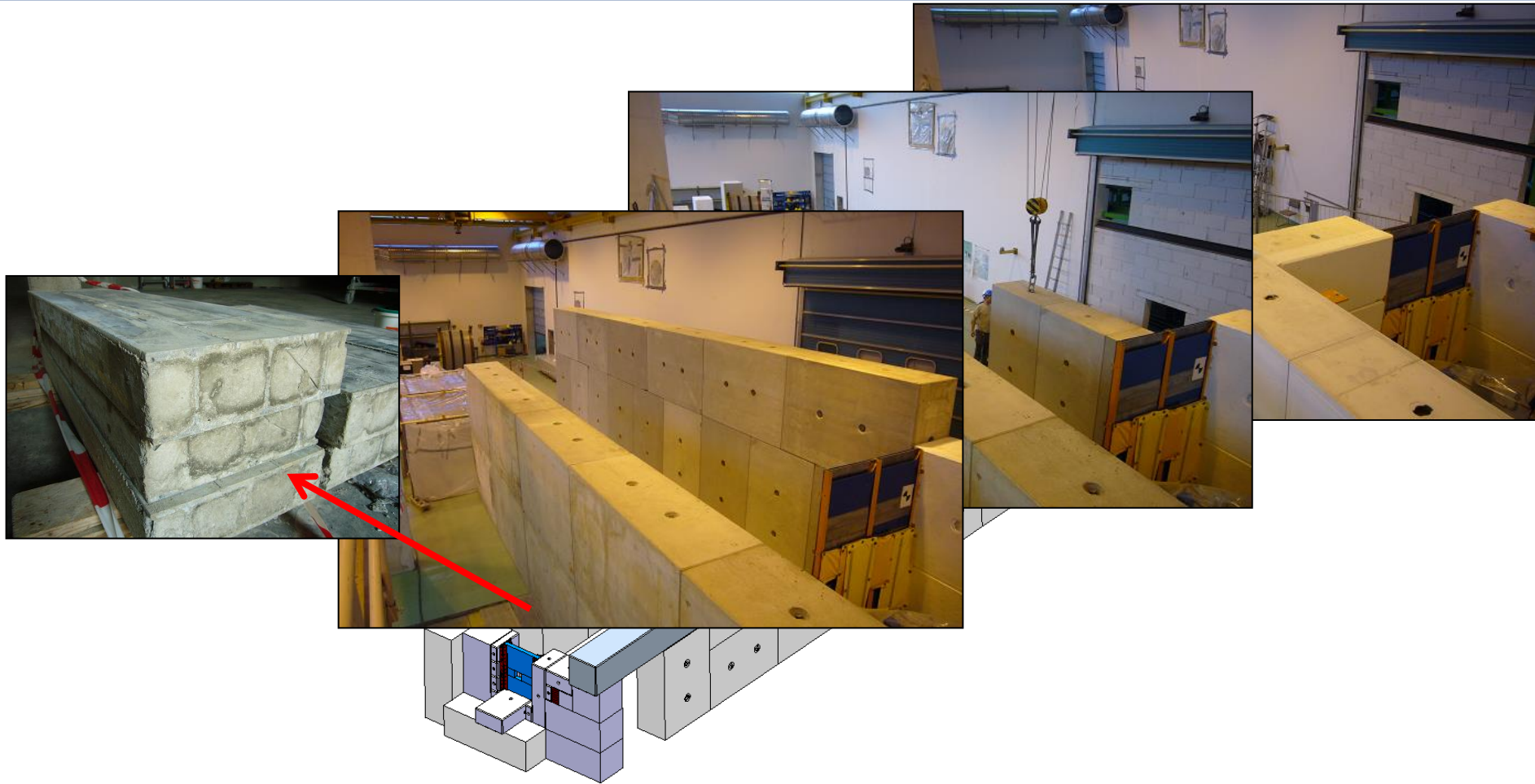


New trench to add

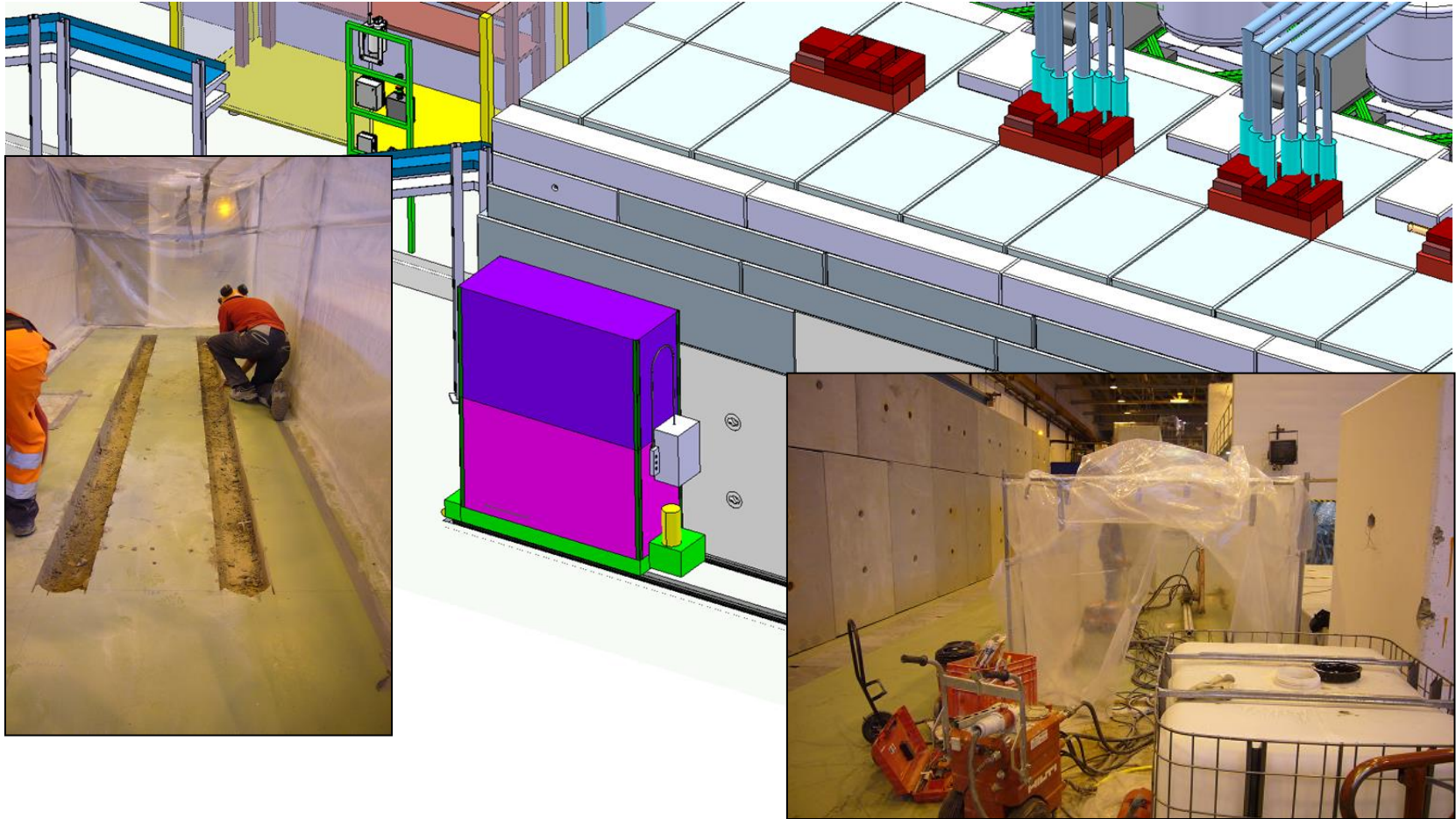
New trench in place for cabling into the new shielding tunnel:  
Covering tent for dust protection



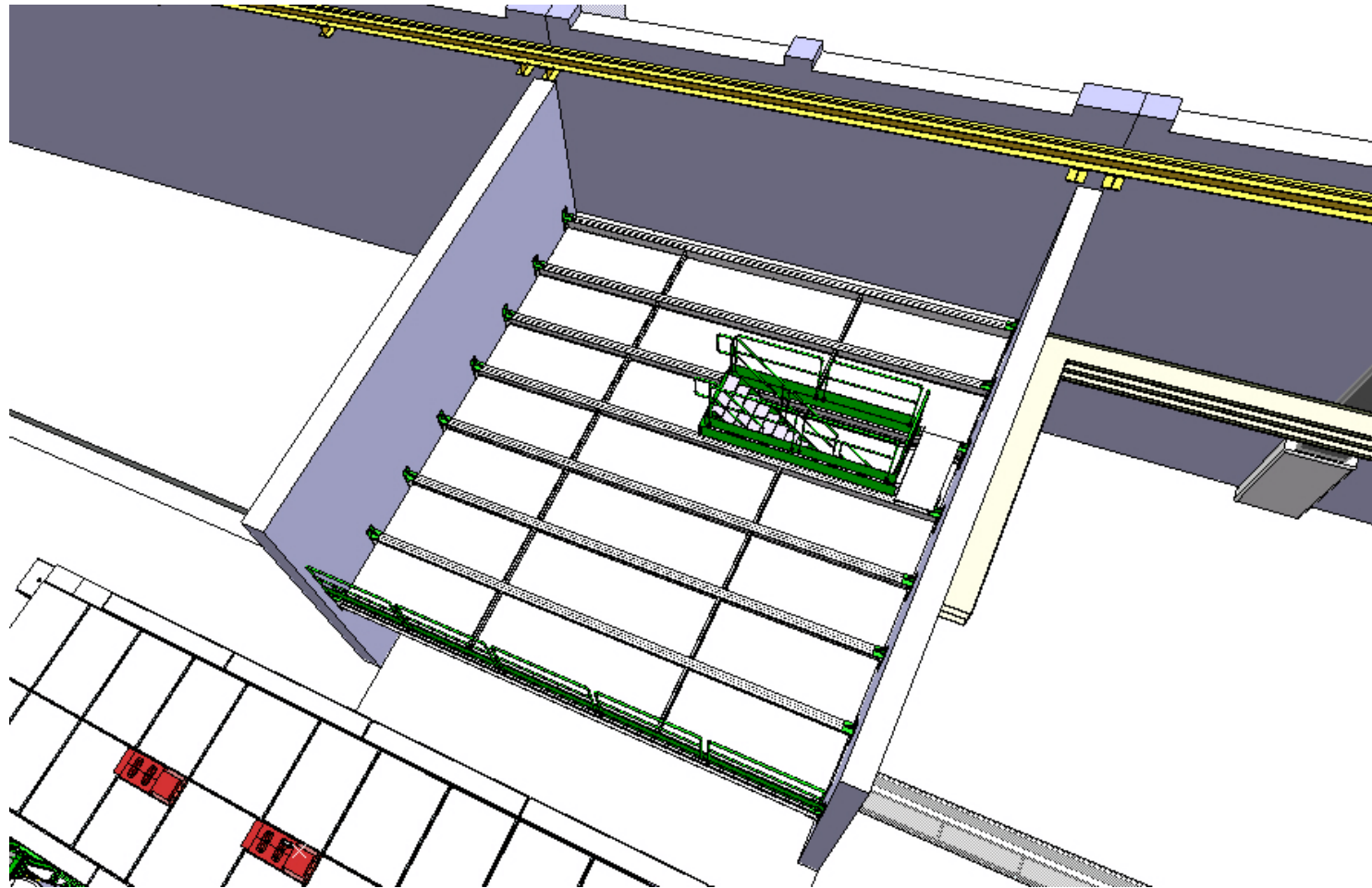
ISOLDE hall 170: Civil engineering  
Installation of the new shielding tunnel walls



ISOLDE hall 170: Civil engineering  
Installation of the new shielding tunnel walls

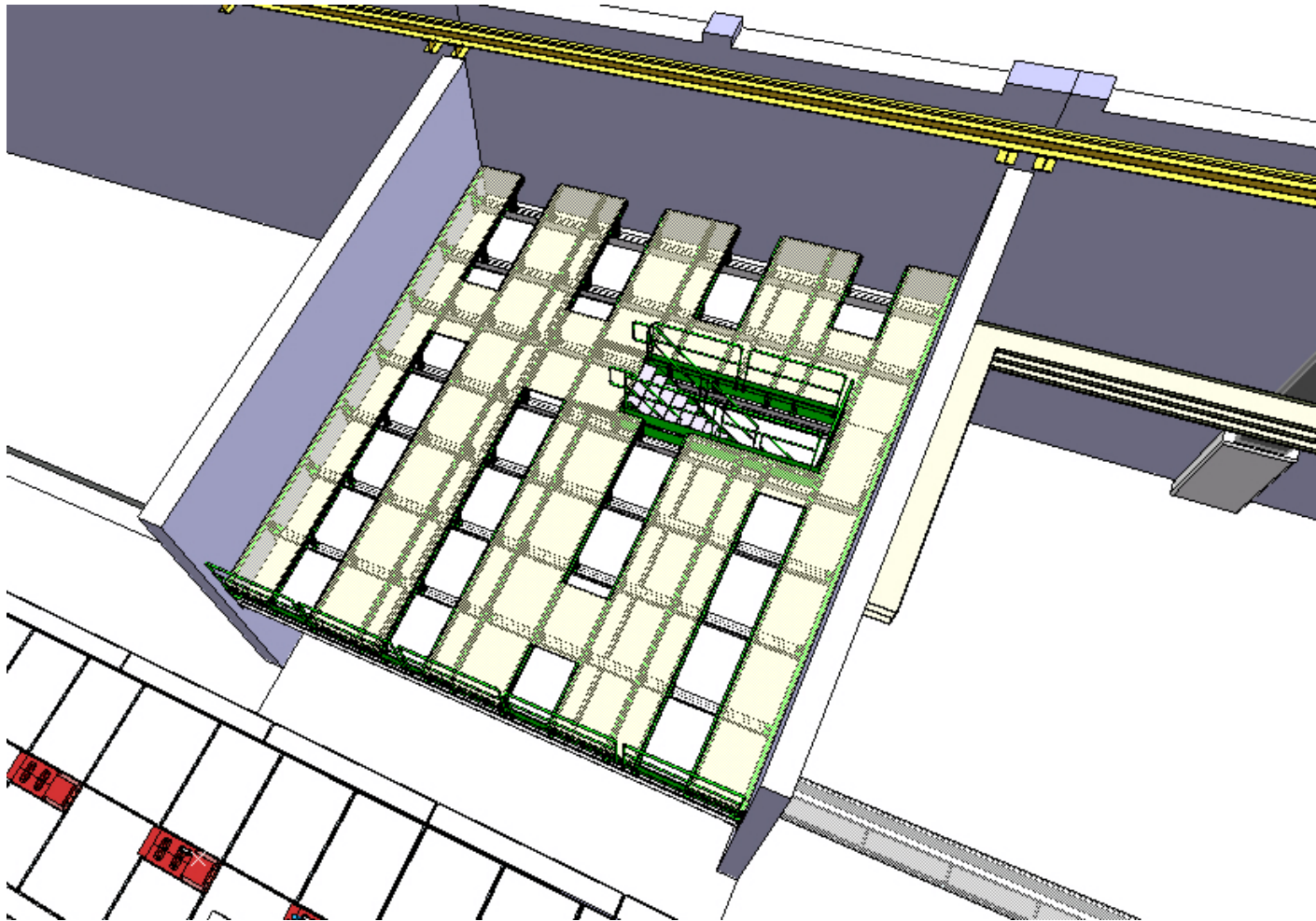


ISOLDE hall 170: Civil engineering  
Installation of the shielding door rails

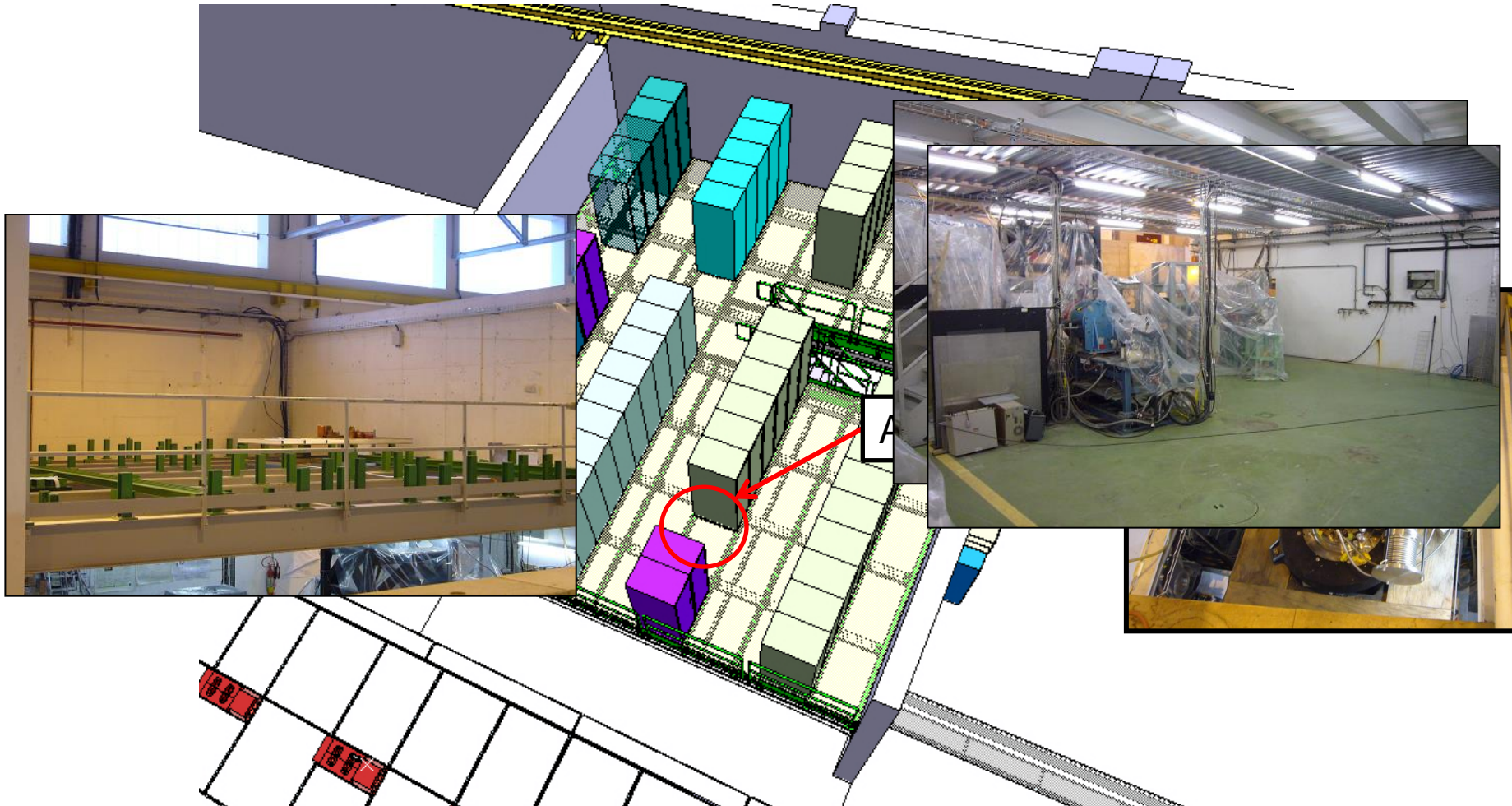


ISOLDE hall 170: Metal structures  
Modification of the future rack platform ongoing





ISOLDE hall 170: Metal structures  
Modification of the future rack platform ongoing



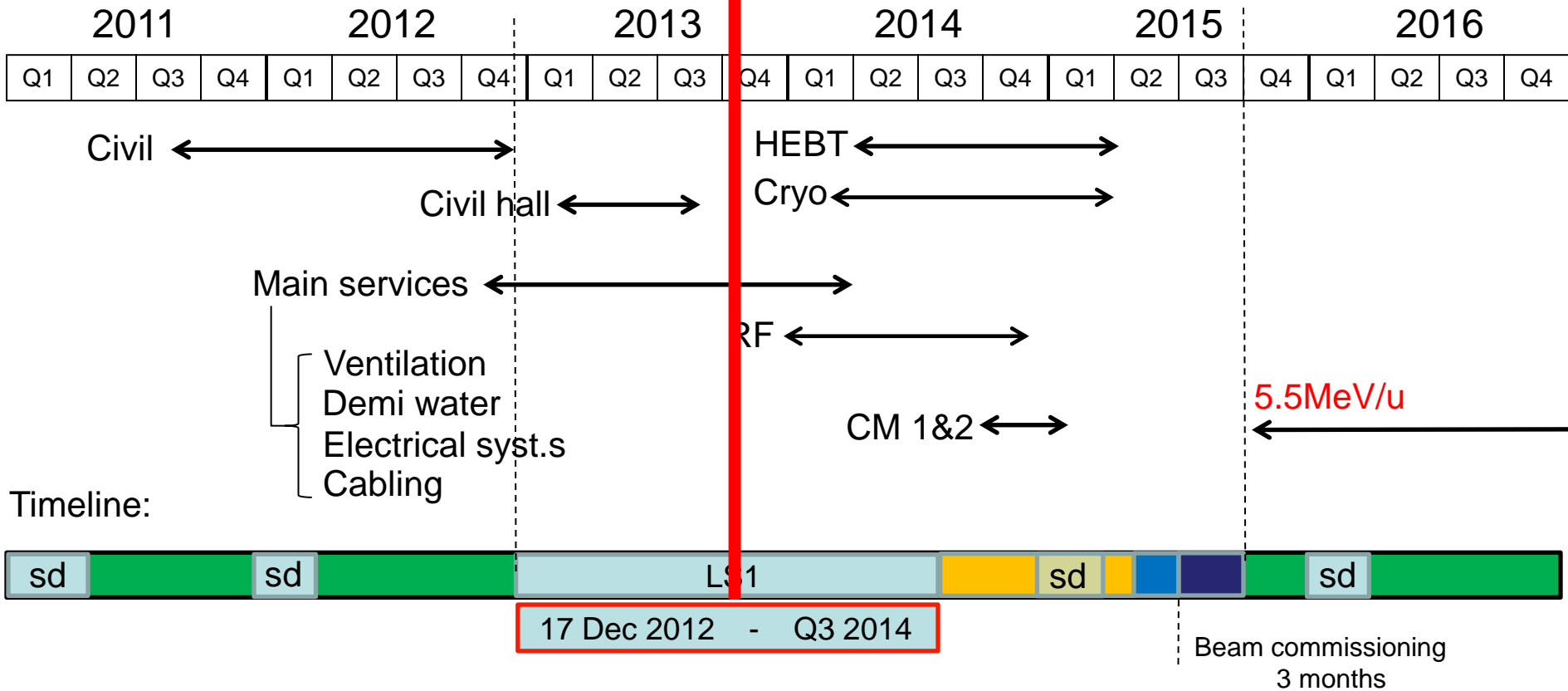
ISOLDE hall 170: Metal structures  
Modification of the future rack platform ongoing

Start Isolde shutdown  
17 dec 2012

We are here:  
Oct 2013

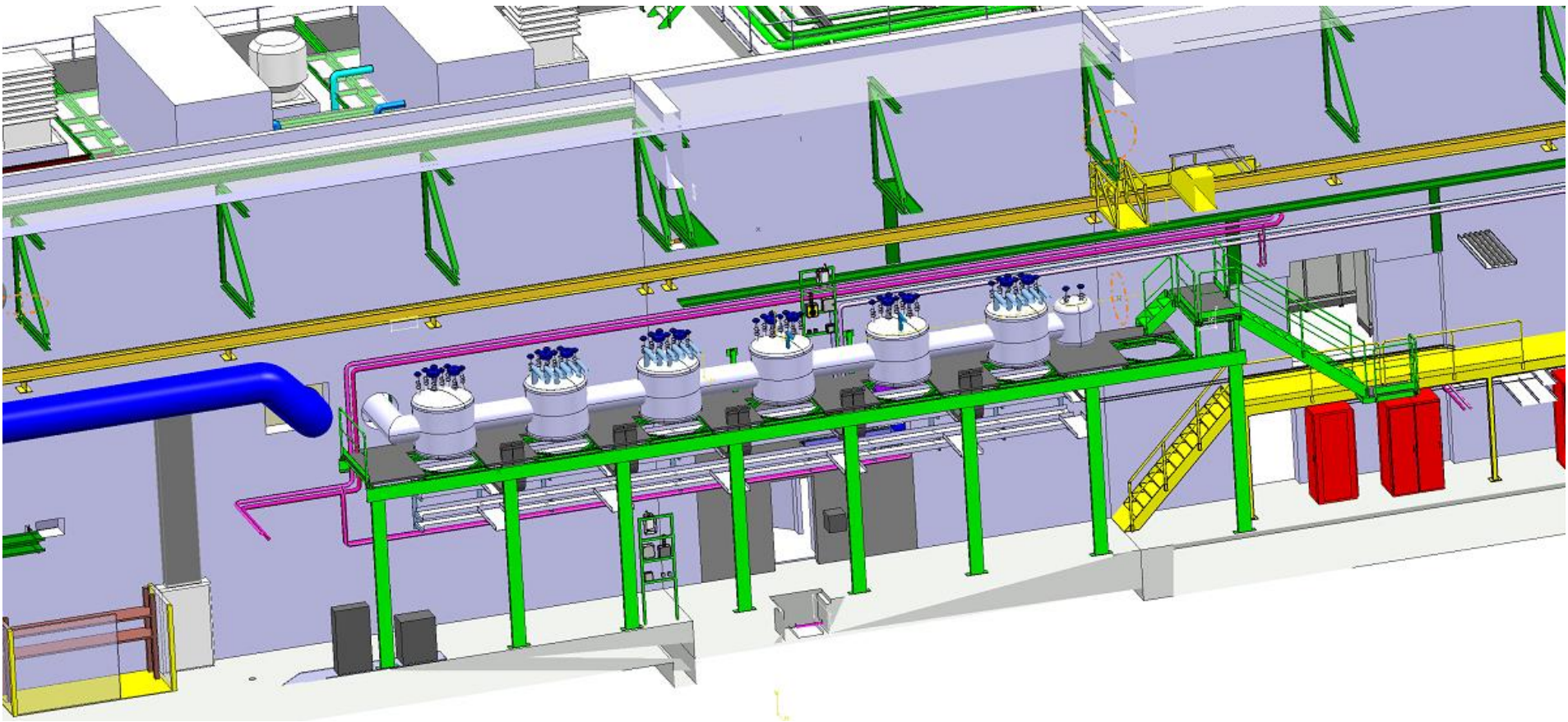
End LS1: Start  
Low E physics  
July 2014

HIE physics at  
5.5MeV/u  
October 2015

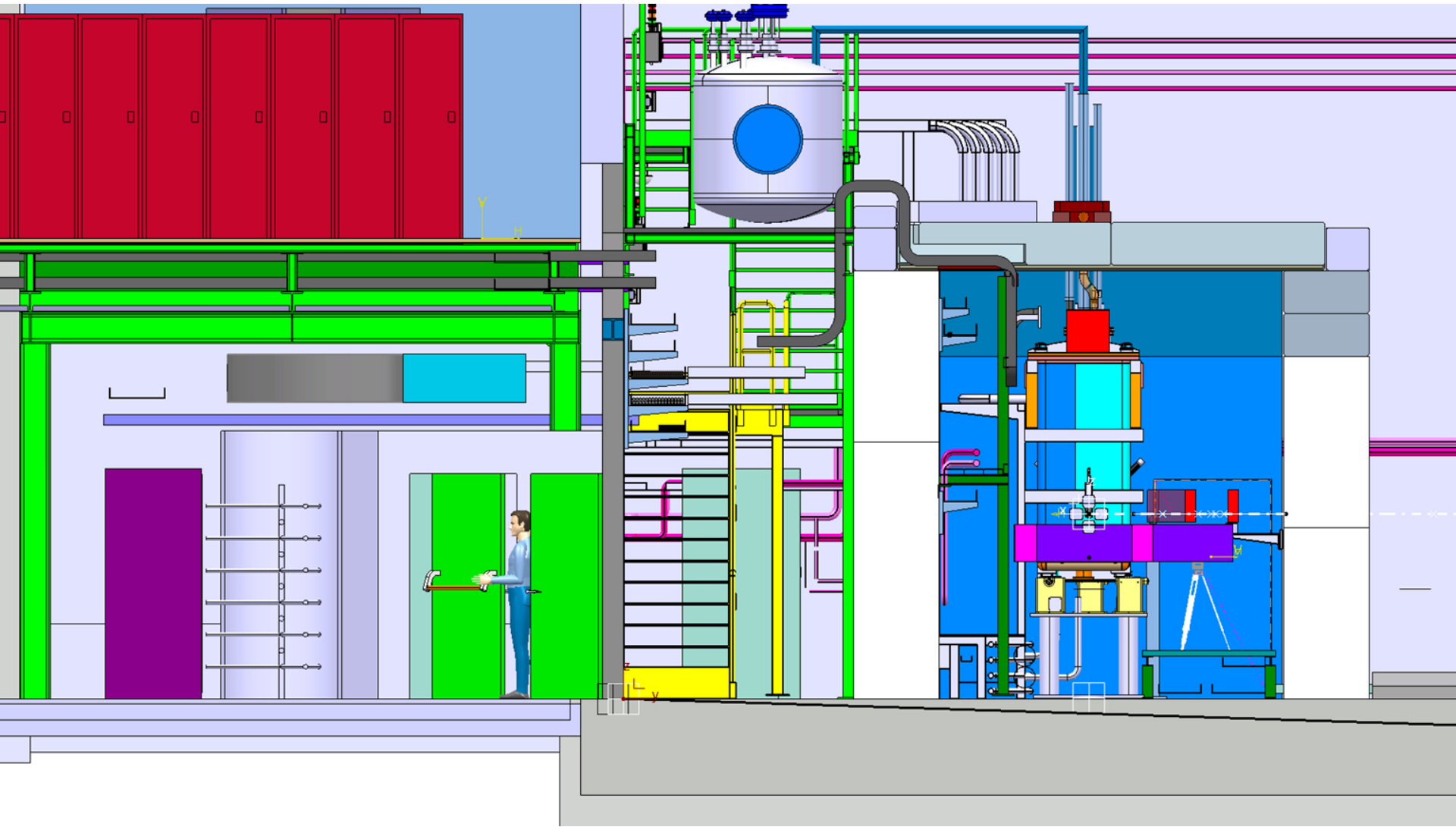


- shutdown
- Isolde Ops
- HIE installations and tests (Isolde normal operations)
- Machine Check-Out (Isolde normal operations)
- Beam Commissioning (Isolde normal operations)

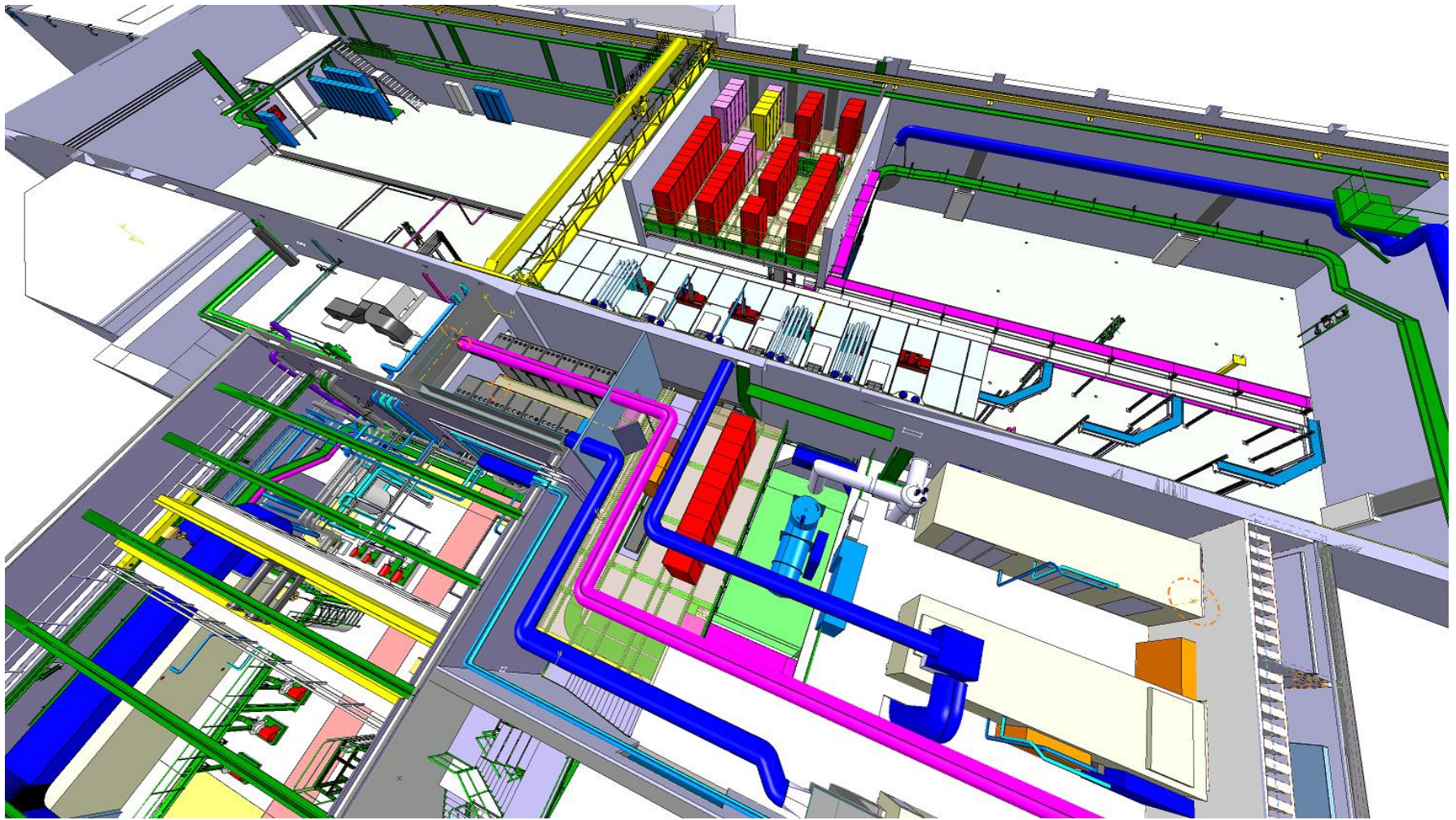
Activities	Delay with regard to baseline April 2013		building	On track present planning	Critical
Cooling & ventilation: Installation units and piping	4 months	Introduced by the contractor. New planning in place	198, 199, 170	Yes	No 14 March ready for Isolde Low Energy startup
Electrical systems: service buildings	2 months	Due to CV contractor delay	198,199	Yes	No
Integration tunnel infrastructure	-	Open actions on metal structure, vacuum and water piping routing, He shielding, CM supports	170	Yes	Yes Critical: tunnel infrastructure + cable trays need structure in place by end Jan'14
Metal Structures: rack platform	2 months	Due to LS1 load	170	Yes	No
Metal Structures: jumper boxes platform	4 months	Design needs finishing: Data missing from Cryo due to late Cryo Line procurement	170	Yes	Yes Critical: cable trays need platform in place end Jan'14
Civil Engineering: trench	2 months	Unforeseen difficulties with trench cutting	170	Yes	No
Civil Engineering: tunnel	2 months	Due to trench delay	170	Yes	No
Cabling: trays and cables	3 months	Due to late modif rack platform + service buildings CV installations delayed	199, 170	Yes	No
Cryogenics: late cryo distribution line	-	Late installation dewar, distribution line & jumper boxes (sept '14)	199, 170	Yes	Yes Critical: very tight with commissioning plan & physics oct'15



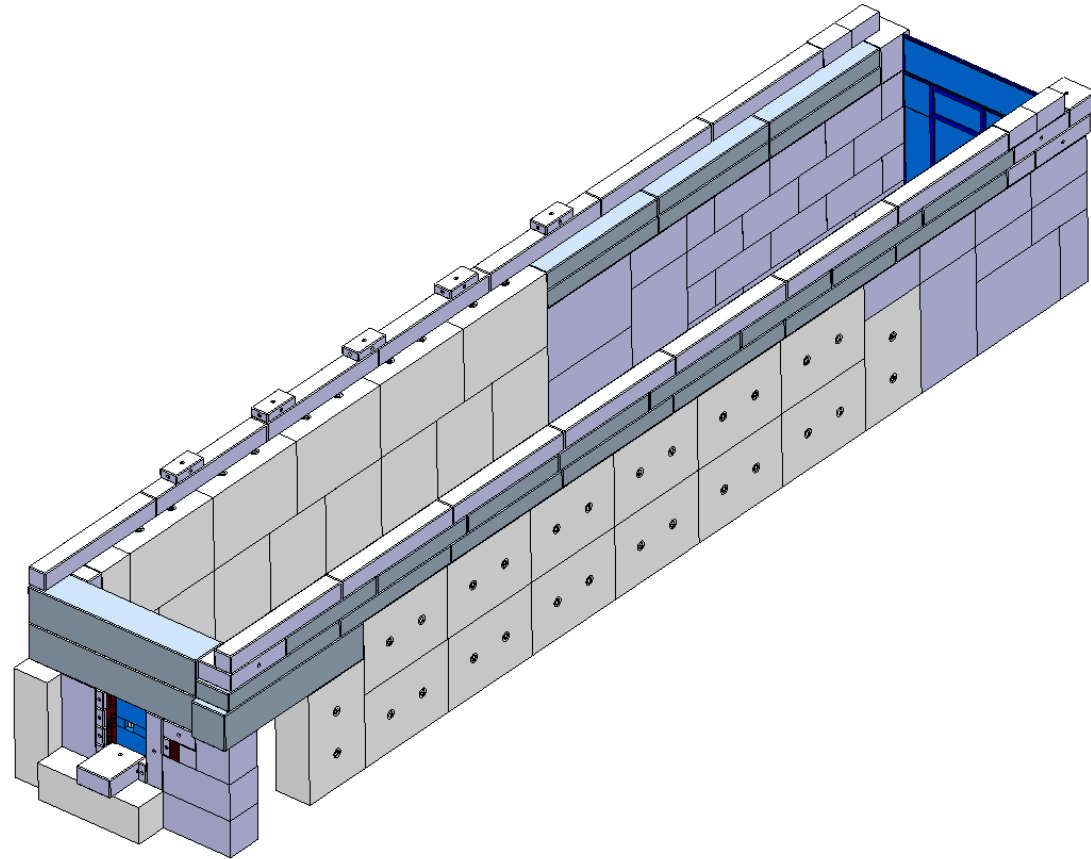
Platforms Cryo Jumper Boxes: To be in place early 2014



Tunnel structure and infrastructure installation to start early 2014

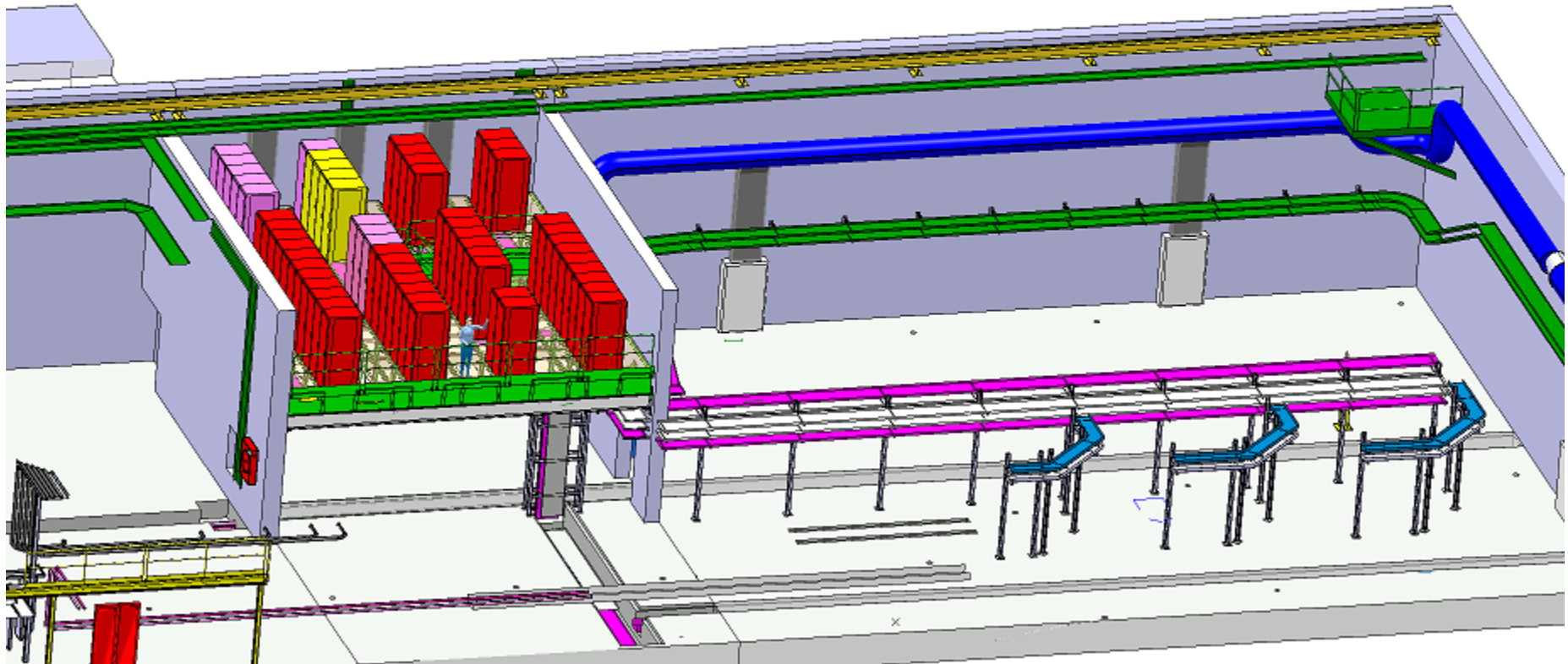


CV units 199, air ducts (remaining 170), diffusers and smoke extractors B198, 199 and 170: Oct-Nov-Dec 2013



Installation top walls shielding tunnel: Dec 2013





Cable trays buildings, tunnel and HEFT: Nov 2013 – March 2014

- **Status Report HIE Installation October 2013:**
  - Progress since the last SC meeting in April  
High activity in the hall and service buildings
  - Have there been or are there any delays  
Yes. Indicated and co-activities planning adapted
  - Are we on track with regard to the planning  
Yes. Despite delays we are still in line with the overall schedule which aims for low energy physics during 2014 and HIE physics as of Oct 2015. Critical paths for some activities are being addressed

- GS/SE : DANIEL PARCHET, ELISEO PERES-DUENAZ
- EN/MEF : STEPHANE MARIDOR, ELEFTHERIOS ZOGRAFOS
- BE/ABP : FREDERIK WENANDER
- BE/OP : DIDIER VOULOT
- PH/SME : MARIA BORGE, MAGDA KOWALSKA
- EN/HDO : YACINE KADI
- BE/RF : MATTEO PASINI, MATTHEW FRASER, DANIEL VALUCH,  
WALTER VENTURINI, LUCA ARNAUDON
- EN/CV : PAUL PEPINSTER, BENOIT LACARELLE, FREDRIC  
BORRALHO
- EN/EL : RENE NECCA, JEAN-CLAUDE GUILLAUME, GEORGI  
GEORGIEV, JEAN-PIERRE BILLON-GRAND EN/EL
- TE/CRG : NICOLAS DELRUELLE, JOS METSELAAR
- EN/STI : RICHARD CATHERALL, ANA-PAULA BERNARDES
- GS/DI : CYRILLE BEDEL
- TE/MSC : YANN LECLERCQ, LLOYD WILLIAMS
- DSG/RP : JOACHIM VOLLAIRE, SANDRA GIRON, ALEXANDRE  
DORSIVAL
- TE/ABT : BRENNAN GODDARD

# **Co-activities planning HIE ISOLDE installation:**

