

Coordinator's report

Schedule 2014

Building 508

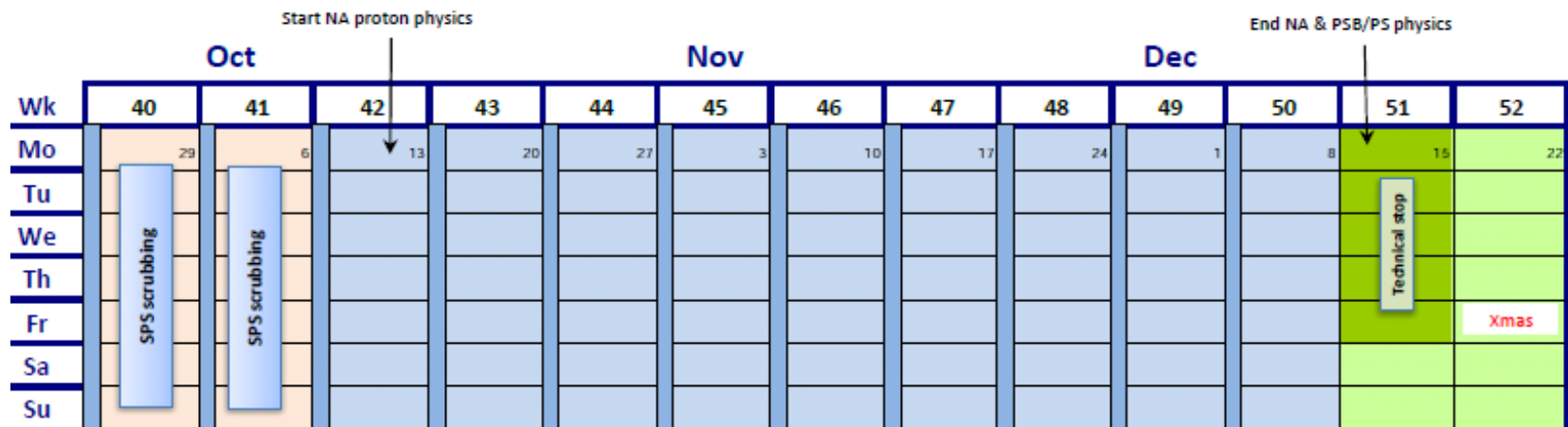
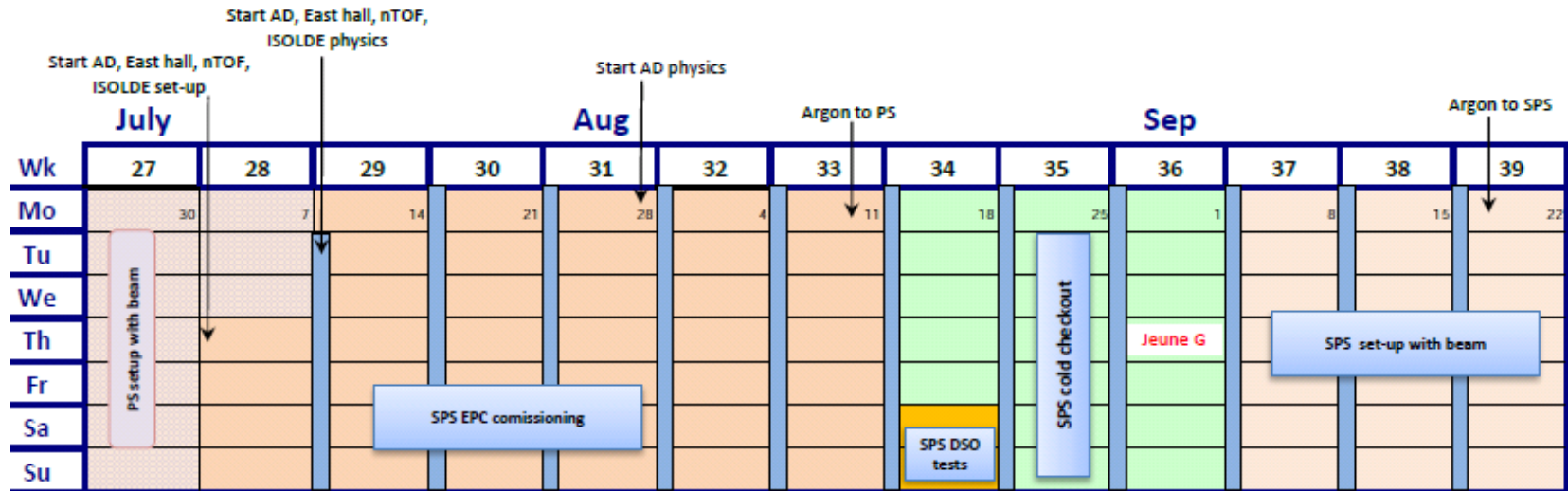
ISOLDE highlights since last meeting

Magdalena Kowalska



Schedule 2014

- Preliminary start: mid-July
- 46% of proton cycles requested; 42% on average assigned (40% in 2011-12)



Building 508



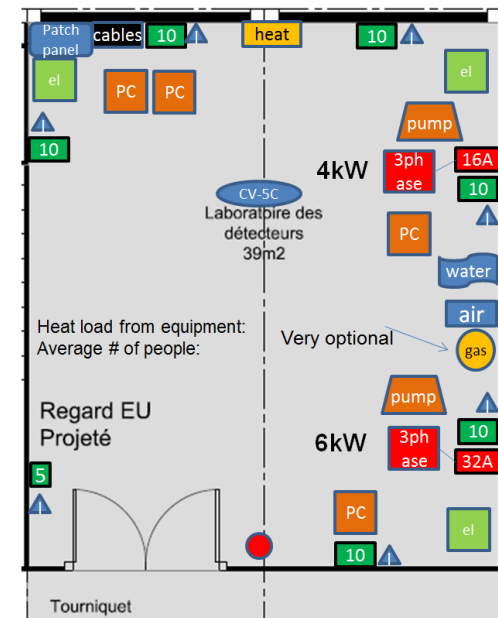
- Progress since last INTC meeting
 - Bldg 115, 507, and 601 demolished
 - Additional space in 1st floor for ISOLDE Control Room
 - Power and cooling&ventillation requirements collected from users
 - Idea of modular cabins abandoned -> light metallic structure
- Planning
 - Concrete floor starting this week until end of November
 - Building ready by end of February



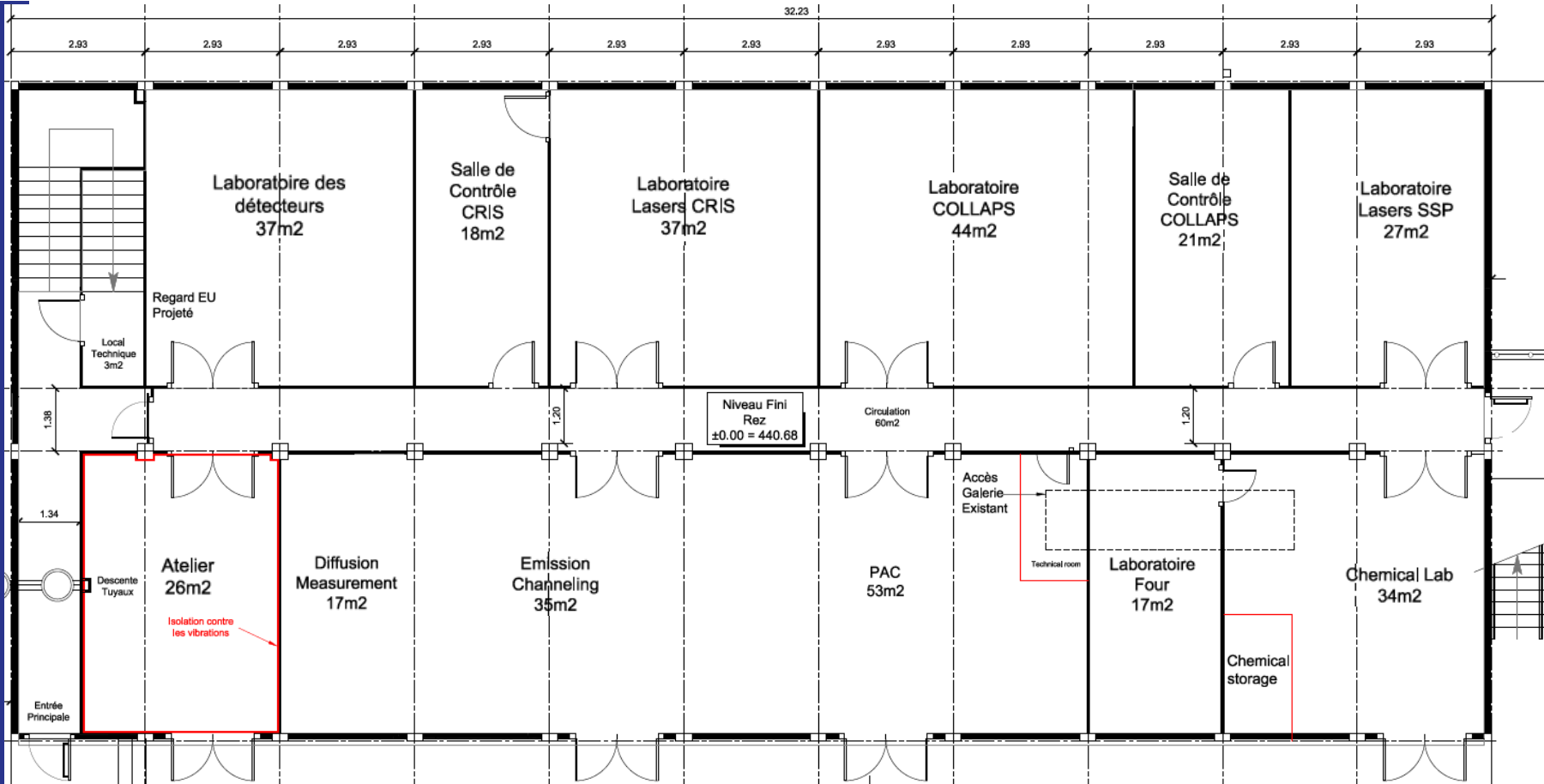
courtesy of E. Perez-Duenas and E. Siesling

	Yes/no (and #)	
5 10	Power plugs (5 or 10)	1,6
XA	3phase plugs (X=16, 25, 32, 64 A)	1,0,1,0
PC	PCs	4
el	electronic racks	3
3ph ase	3 phase equipment	2
CV-5C	Standard aircon (5C stab.)	1
CV-1C	Special aircon (lasers)	no
air	Pressurized air	yes
cables	Signal cables from ISOLDE	10
	Local emerg. switch	1
heat	radiators	1
water	Water cooling	yes
	Network (2 plugs)	7
pump	Prepump exhaust	2
gas	Gas connection	yes
Patch	Patch panel	yes

Detector lab

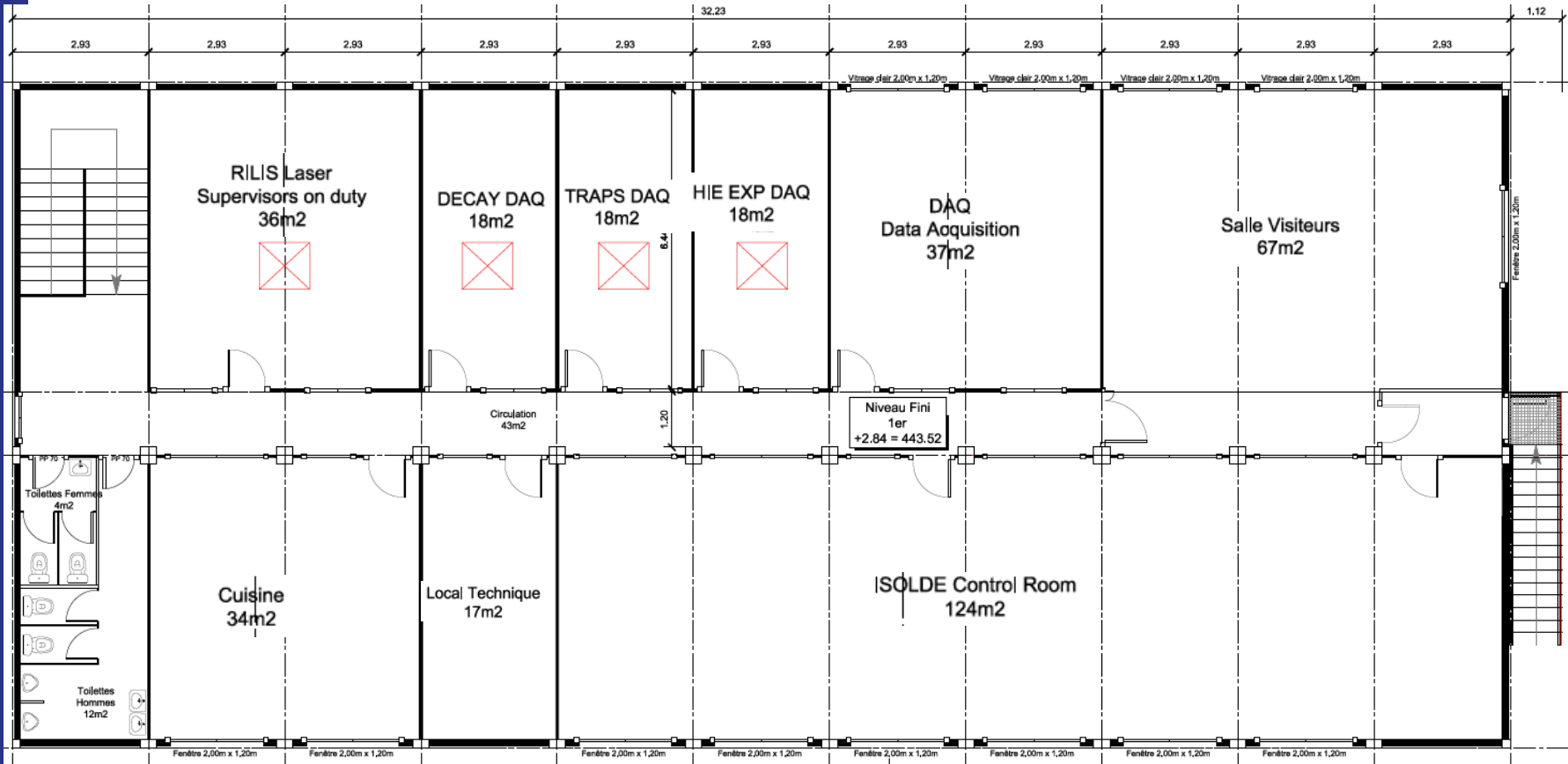


Building 508



Ground floor: 450 m²

Building 508



1st floor : 450 m²

ISOLDE physics in 2013

- 2013 – time to publish results

Octupole deformation in ^{224}Ra :
MINIBALL

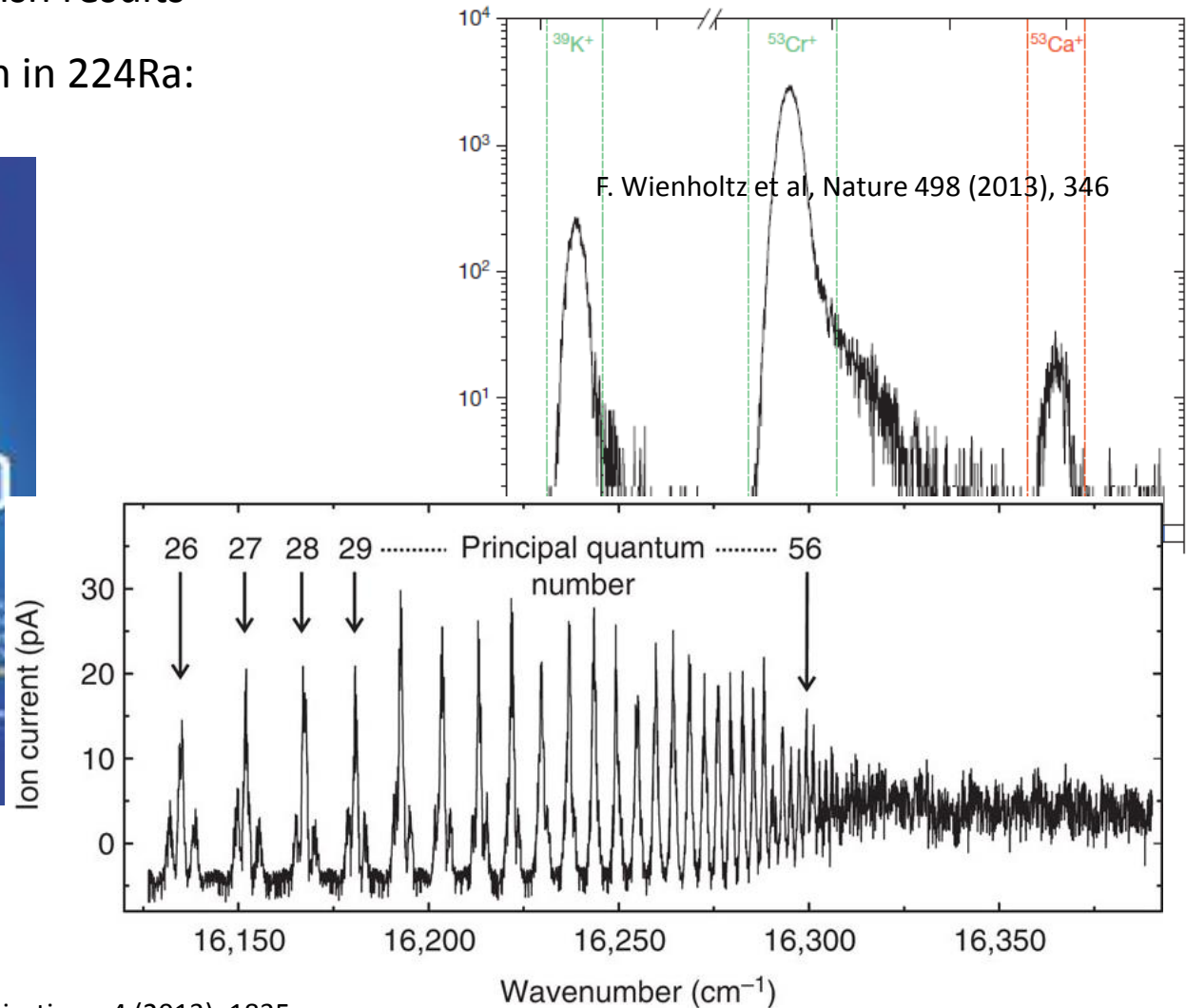


L.P. Gaffney et al,
Nature 497 (2013) 199

S. Rothe et al,
Nature Communications 4 (2013), 1835

And more exciting publications!

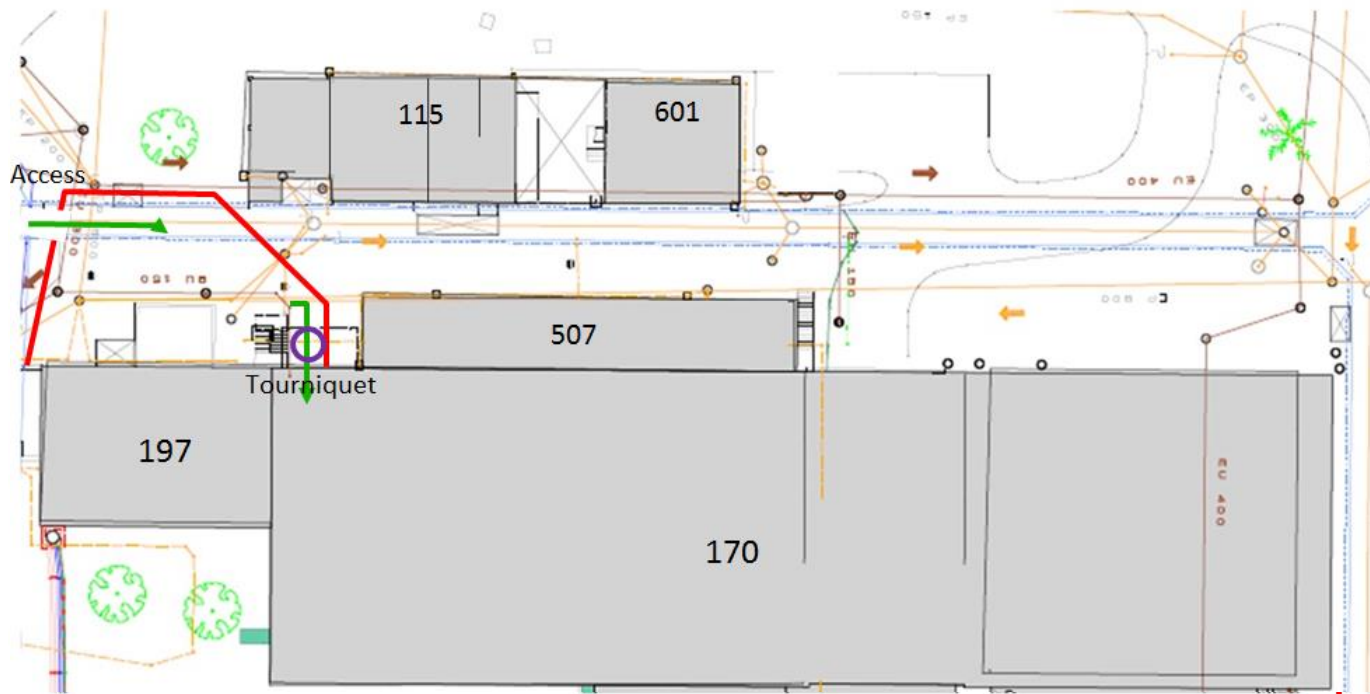
Mass of ^{54}Ca and 3-body forces: ISOLTRAP



At ionization potential: RILIS

New access from the Jura side

During 508 construction work:



Shifts 2012

Delivered	2012	2011
Protons	11.5e19	8.05e19
All shifts (IS+LOI+MD)	529	463.5
Shifts for IS exp	416	313.5
Shifts for LOIs	15.5	16
REX shifts (IS +LOI)	221.5	190.5
Average IS shifts/day	1.61	1.55

Physics programme was running until December 17, 2012

Shifts balance

- Low-energy IS experiments (including WITCH): 364.5 shifts
- Post-accelerated REX experiments: 216.5 shifts
- Approved for HIE-ISOLDE (Oct 2012): 429 shifts