



CERN openlab IT Challenges Workshop

Alberto Di Meglio
CERN openlab CTO office



A long, dimly lit tunnel, likely part of a particle accelerator. On the left side, a large, cylindrical structure, possibly a superconducting magnet, is visible. The tunnel walls are lined with various pipes, cables, and structural elements. A walkway with a white line runs along the right side of the tunnel. The overall atmosphere is industrial and futuristic.

CERN: A UNIQUE ENVIRONMENT TO PUSH TECHNOLOGIES TO THEIR LIMITS

CERN openlab in a nutshell

A science – industry partnership to drive R&D and innovation with over a decade of success

Evaluate state-of-the-art technologies in a challenging environment and improve them

Test in a research environment today what will be used in many business sectors tomorrow

Train next generation of engineers/employees

Disseminate results and outreach to new audiences

PARTNERS



ORACLE

SIEMENS

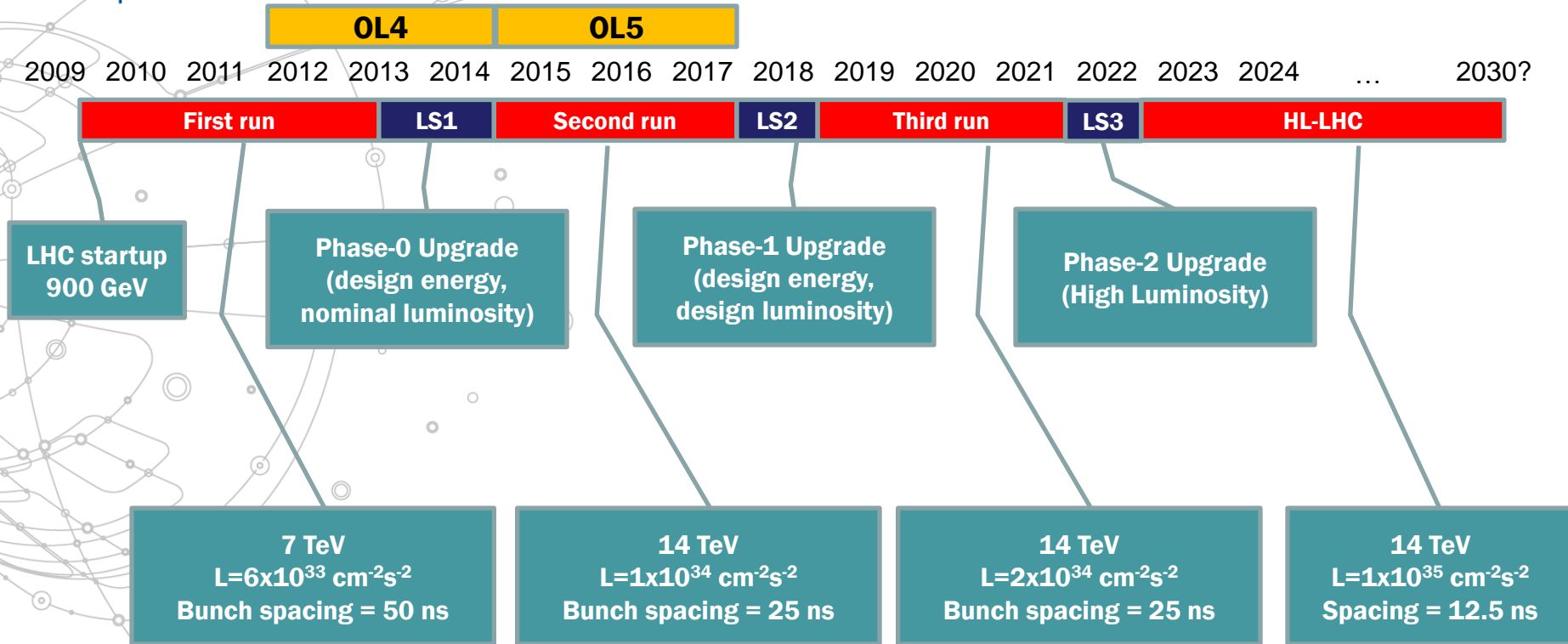
CONTRIBUTOR



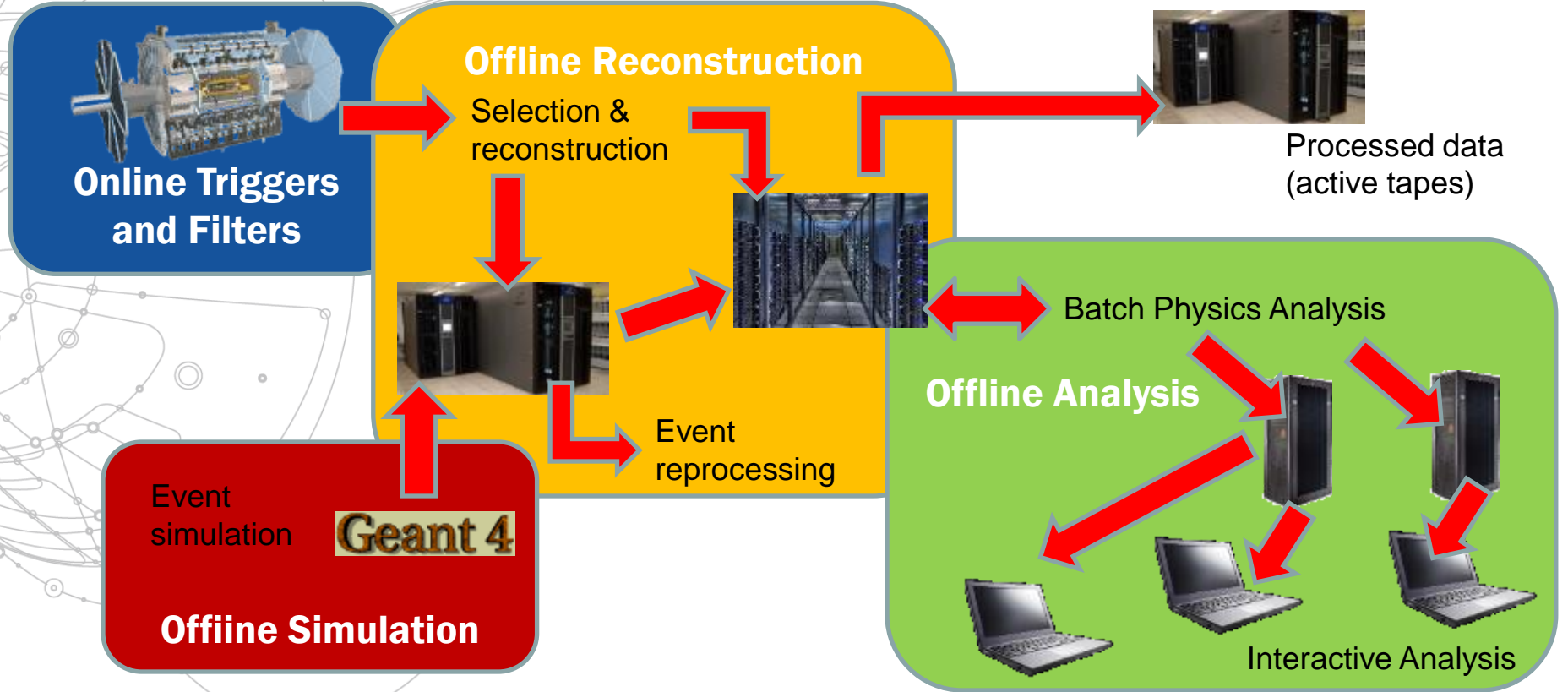
ASSOCIATE

Yandex

LHC Schedule

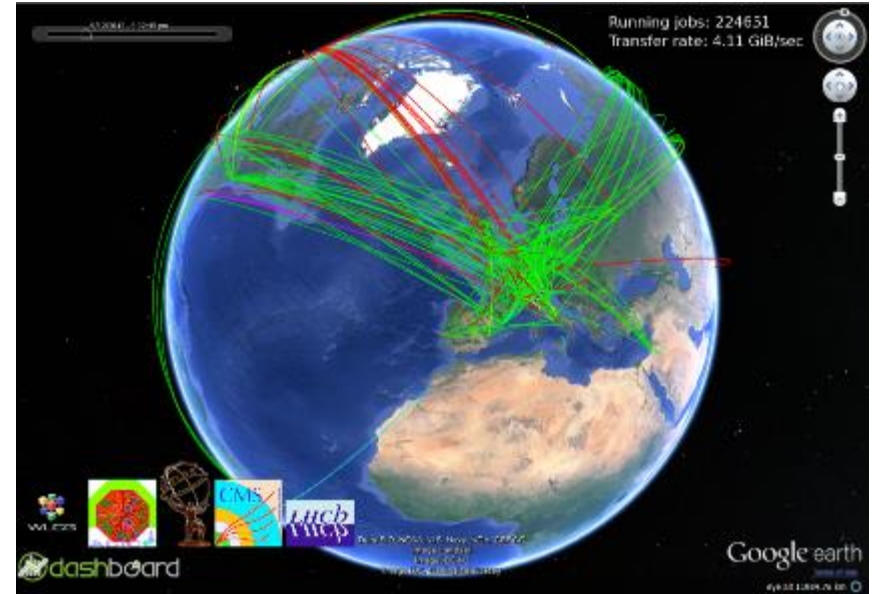


Data Handling and Computation





ICT Infrastructure



Technical Challenges and Use Cases

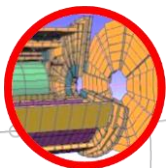
- A set of ambitious challenges with a 5-year time scope
- A practical set of use cases for each challenge
- Based on LHC and experiment requirements, but open to general needs of other research organizations in terms of large-scale computing and data services

Challenges

CERNopenlab



Online triggers and DAQ



Offline simulation and processing



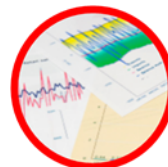
Data storage architectures



Resource management and provisioning



Networks and connectivity



Data analytics

Who we are involving



ORACLE

SIEMENS

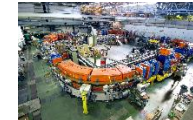
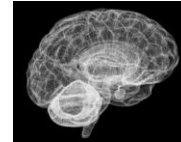


HUAWEI

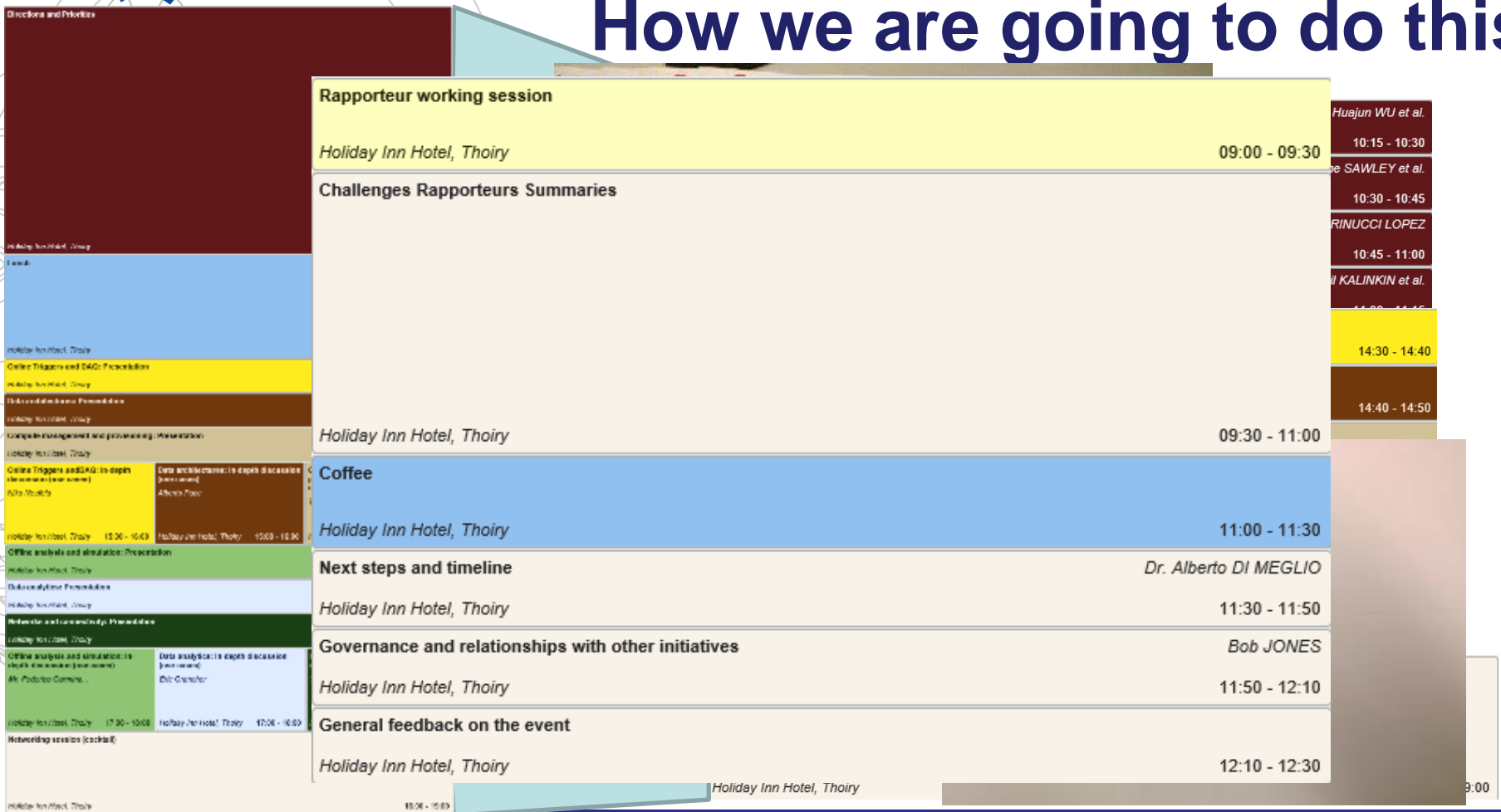


CERN openlab

Yandex



How we are going to do this



Logistics and organization

■ Three rooms

- **Alpes** (Plenaries, Data Architectures, Data Analytics)
- **Leman-Geneve** (Compute Provisioning and Management, Networks and Connectivity, Cocktail)
- **Rhone** (Online, Offline)

■ Let us know if you need to print boarding passes, need taxis, additional stickers, etc.

■ For any additional information or logistics support ask:

- ○ Me (Alberto Di Meglio)
- Kristina Gunne



GET IN TOUCH www.cern.ch/openlab

EXECUTIVE CONTACT

Bob Jones, Head of CERN openlab
bob.jones@cern.ch

TECHNICAL CONTACTS

CERN openlab Chief Technology Office
Alberto Di Meglio, alberto.di.meglio@cern.ch
Sverre Jarp, sverre.jarp@cern.ch
Andrzej Nowak, andrzej.Nowak@cern.ch

COMMUNICATION CONTACT

Mélissa Gaillard, CERN openlab Communications Officer
melissa.gaillard@cern.ch