



Conference Introduction  
Mike Tuts (Columbia University)



# Welcome

- Welcome to 2<sup>nd</sup> annual LHCP2014 co-hosted by Columbia University and Brookhaven National Lab!
  - About 300 registered
- Welcome to Columbia University! We hope you enjoy your stay here.
  - Looks like the weather may cooperate depending which forecast you choose!
- If you registered on Sunday, you can pick up a written receipt today at the registration desk

	iMap Weather	Foreca	AccuWeather
<b>1</b> SUN	24°/14° 0 % precip	22°/14° 2 % precip	25°/15° 6 % precip
<b>2</b> MON	27°/17° 0 % precip	25°/19° 2 % precip	28°/18° 18 % precip
<b>3</b> TUE	27°/18° 20 % precip	26°/16° 15 % precip	29°/19° 84 % precip
<b>4</b> WED	28°/18° 40 % precip	21°/17° 90 % precip	28°/18° 64 % precip
<b>5</b> THU	26°/17° 40 % precip	23°/15° 85 % precip	28°/18° 47 % precip
<b>6</b> FRI	26°/16° 0 % precip	24°/16° 25 % precip	27°/18° 69 % precip
<b>7</b> SAT	26°/15° 20 % precip	25°/17° 20 % precip	27°/19° 71 % precip

## Who to Blame...

- The buck stops here...
- The local chairs are

Our first challenge...

**We have heard from some of you staying in the Barnard dorms that it is cold at night (and you only have a thin blanket). We have asked for additional blankets to be made available to you in the dorm .. Help should be on the way!**



Srini Rajagopalan



Mike Tuts

LOCAL ORGANIZING COMMITTEE

Chris Bee, Howard Gordon, Hong Ma, John Parsons



# With Thanks to...



- Our co-conference chairs
  - Gregorio Bernardi, Guenakh Mitselmakher
- Scientific Secretary
  - Hideki Okawa
- International Advisory Committee
  - P. Campana, T. Camporesi, D. Charlton, D. Denegri, T. Dova, F. Gianotti, P. Giubellino, P. Grannis, J. Incandela, P. Jenni, J. Lykken, M. Martinez, L. Ristori, K. Safarik, G. Wilkinson
- Program Committee – Kevin Einsweiler & Greg Landsberg (co-chairs)
  - F. Antinori, S. Dawson, T. Gershon, G. Guidice, P. Koppenburg, C. Mariotti, M. Neubert, M. Papucci, F. Petriello, K. Terashi, R. Van Kooten, C. Vellidis, E. Vercellin



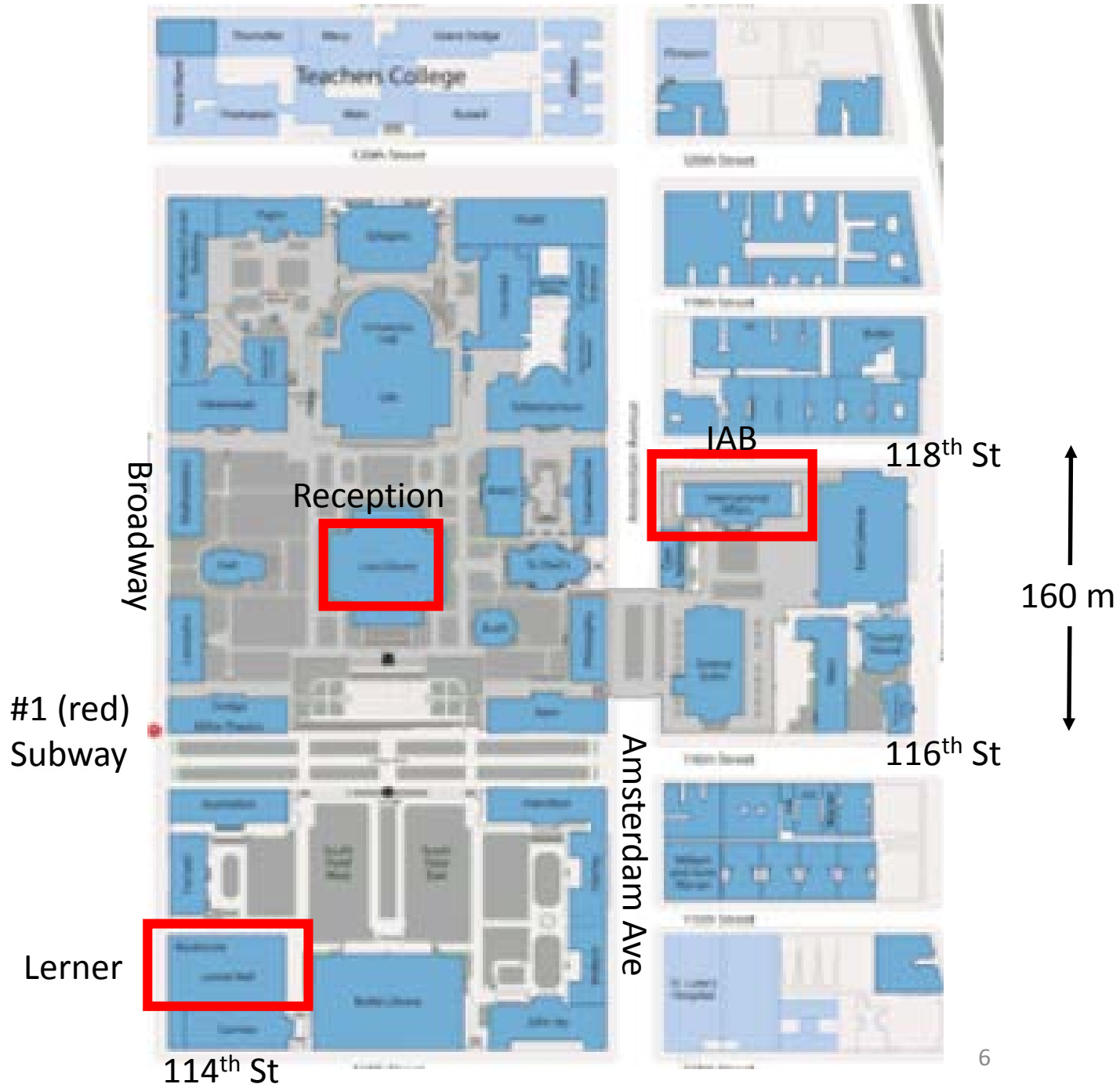
# Who can Help

- The Local Organizing Committee
  - Chris Bee, Howard Gordon, Hong Ma, John Parsons
- The people that can best help are at the registration desk and in the Secretariat (in Ramp Lounge East, printer, wired connection)
  - Connie Potter
  - Heather Sherwood-Mockridge
  - Winnie Yu
  - JoAnn Winsten (in Pupin)



# Venues

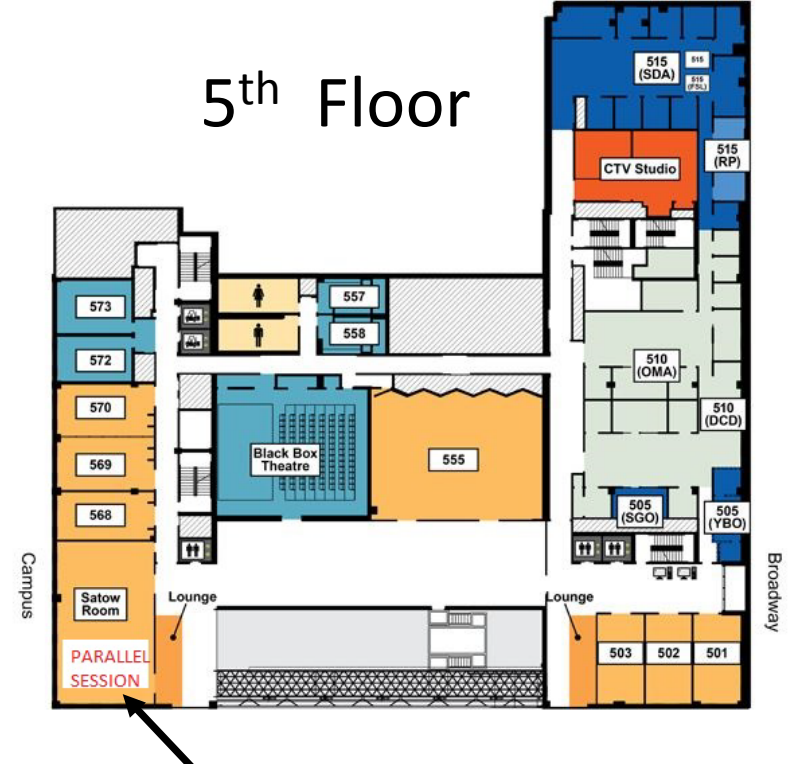
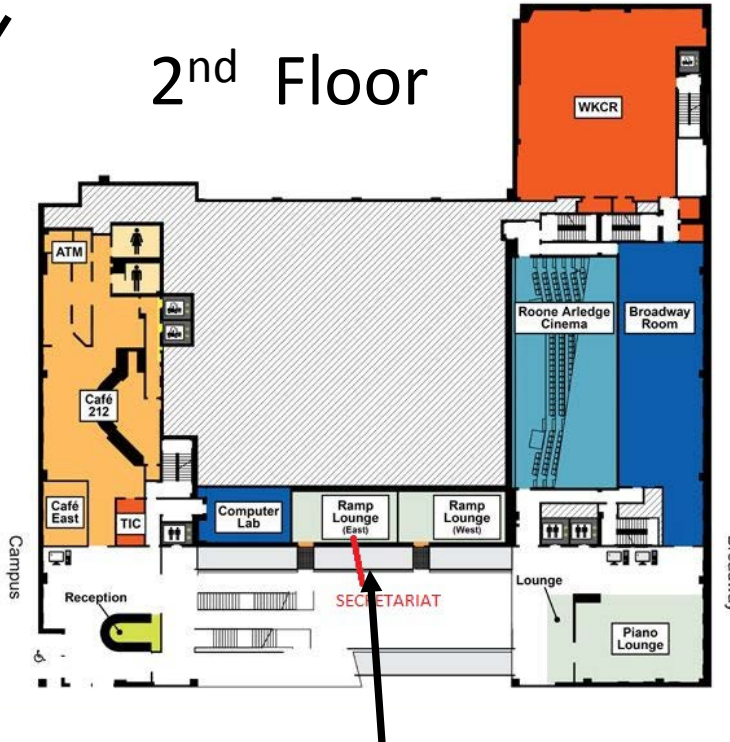
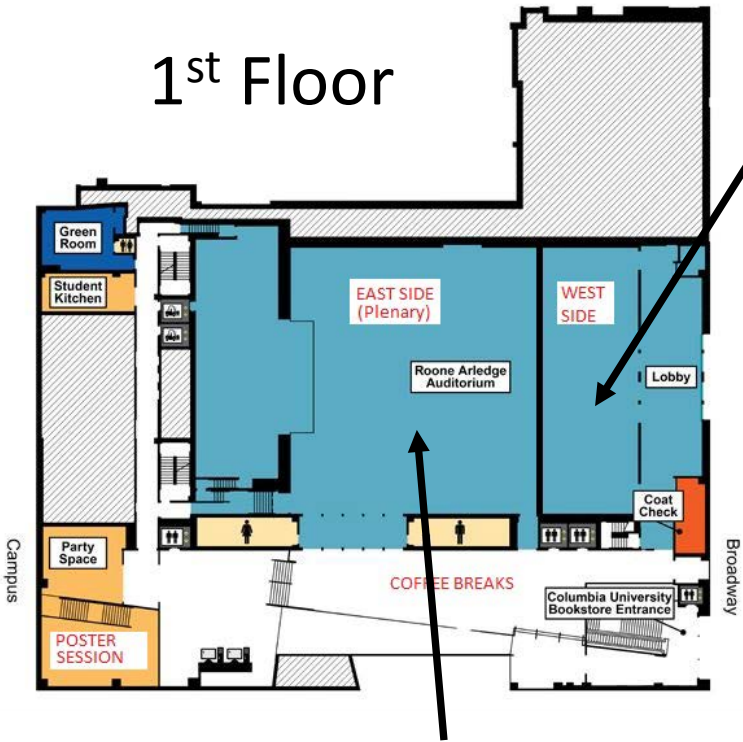
- We are currently in the southwest corner of the campus
- From June 2-6 we are completely in this building (Lerner Hall)
- On Saturday June 7 the final session will be in the international affairs building (417)
- Reception tonight in Low Library Rotunda





# Lerner Hall – where we are now

Roone Arledge WEST – parallel session



We are here!  
Roone Arledge Auditorium EAST

Secretariat  
Ramp Lounge east

Satow – parallel session

## Rich Scientific Program

Monday June 2th	Tuesday June 3rd	Wednesday June 4th	Thursday June 5th	Friday June 6th	Saturday June 7th
<b>Registration</b> 0730-1700 (All Day)	<b>Registration</b> 0800-1015	<b>Registration</b> 0800-1015	<b>Registration</b> 0800-1015	<b>Registration</b> 0800-1015	
0830-1015 <b>Opening Plenary</b>	0830-1015 <b>SM Higgs Plenary</b>	0830-1015 <b>SM Higgs and Beyond Plenary</b>	0830-1015 <b>BSM2 Plenary</b>	0830-1015 <b>Top Plenary</b>	0900-1045 <b>Electroweak Plenary</b>
1015-1045 Break	1015-1045 Break	1015-1045 Break	1015-1045 Break	1015-1045 Break	1045-1115 Break
1045-1230 <b>Parallel</b> ■ Higgs 1 ■ Heavy Flavor 1 ■ Heavy Ion 1	1045-1230 <b>Parallel</b> ■ BSM 1 ■ Electroweak 2 ■ Heavy Ion 2	1045-1245 <b>BSM1 Plenary</b>	1045-1230 <b>Parallel</b> ■ BSM 3 ■ QCD 1 ■ Top 2	1045-1230 <b>Upgrade Plenary</b>	1115-1300 <b>Plenary</b>
1230-1345 Lunch	1230-1345 Lunch		1230-1345 Lunch	1230-1330 Lunch	
1345-1530 <b>Parallel</b> ■ Higgs 2 ■ Electroweak 1 ■ Heavy Flavor 2	1345-1530 <b>Parallel</b> ■ BSM 2 ■ Heavy Flavor 3/QCD ■ Top 1		1345-1530 <b>Parallel</b> ■ BSM 4 ■ Higgs 3 ■ QCD 2	1330-1600 <b>Panel Debate</b>	
1530-1600 Break	1530-1600 Break		1530-1600 Break		
1600-1745 <b>Heavy-Flavor Plenary</b>	1600-1830 <b>QCD Plenary</b>		1600-1820 <b>Heavy Ion Plenary</b>	1600-1730 <b>Poster Session</b>	
				1730-1745 <b>Boarding Bus to Pier 61</b>	
1830-2030 <b>Reception</b> ■ Conference photo at 1815		1900-2100 <b>Screening of Particle Fever</b>		1900-1930 Boarding at Pier 61	
				1930-2230 <b>Banquet (Dinner Cruise)</b>	

### June 2-6, 2014 (Monday-Friday)

- Lerner Hall (1st Floor): Roone Arledge Auditorium (East)
- Lerner Hall (1st Floor): Roone Arledge Auditorium (West)
- Lerner Hall (1st Floor): Party Space
- Lerner Hall (5th Floor): Satow Room
- Lerner Hall (2nd Floor): Secretariat room is located in East Ramp Lounge

### June 7, 2014 (Saturday)

- International Affairs Building: Altschul Auditorium (Room 417)



## Noteworthy Events



### Dennis Overbye examines...

Dennis Overbye of the NY Times moderates a panel discussion: **The Road to Discovery**

**Date:** Friday, June 6, 2014

**Time:** 1:30 PM

**Venue:** Columbia University's Alfred Lerner Hall (Roone Arledge Auditorium)

#### [More Information](#)

**Panelists:** Nima Arkani-Hamed, Sergio Bertolucci, Jerry Blazey, Hitoshi Murayama, Steve Ritz and Natalie Roe.

Fabiola Gianotti will provide an overview of the global perspective.

**You can participate too!** What would you like Dennis to [ask the panelists?](#)

- **Poster session**

- 4 prizes to be awarded to the best posters
- Upload your poster by the end of Tuesday to participate
- Awards presented at the banquet

**Friday June 6 from  
4pm – 5:30pm**

**Friday June 6 from 1:30pm – 4:00pm**

# LHCP 2014

The Second Annual Conference  
on Large Hadron Collider Physics

## Social Programs



**Wed June 4 in this hall  
(opened up) – doors open at  
6pm**

### Screening of "Particle Fever"



An award-winning documentary about the Large Hadron Collider directed by Mark Levinson, followed by screening Q&A.

Date: Wednesday, June 4, 2014

Time: 6:00 PM - 10:00 PM

Venue: Columbia University Lerner Hall (Roone Arledge Auditorium)

LHCP2014 registrars, attendees and accompanying guests are not required to register for this event. Your conference badge will be your admission tickets.

Click here for more information and to register for this event.

**We have 1,200 (including you) registered!**



**Banquet Friday June 6 at Pier 61 (23<sup>rd</sup> St) boarding at 7pm – exchange your banquet ticket for real ticket on bus or at pier – NO TICKET -> NO BOAT!!**



**7 Buses leave from Amsterdam Ave @ 116<sup>th</sup> St at ~5:45-6:00pm. To give you genuine US school experience!**

**Reception in Low Library Rotunda  
TODAY at 6:30-8:30 pm with  
remarks at 7pm  
President Lee Bollinger  
Dr. Peter Jenni  
Congressman Jerry Nadler  
WEAR YOUR BADGE FOR ENTRY  
There will be coatcheck if needed  
Picture @6:15 on steps of Low**

# Transportation

- The fastest way to travel in NYC is via subway
  - Some of you may have experienced delays/closed stations yesterday – that is a weekend phenomenon as they carry out construction. No such problems during the week
  - Our stop is 116<sup>th</sup> St/Columbia University (entrance at 116<sup>th</sup> St & Broadway)
  - It is in the #1 line (the one in red)
- More scenic (but slower) is the bus
  - They stop ~ every 2 blocks
  - Buses lines that run near the university are the M11, M60, M104
  - You can see the live bus information at <http://bustime.mta.info/>
- Taxi
  - You can take either lime green or yellow taxis
  - The green ones cannot pick up below 96<sup>th</sup> St, but can drop you anywhere



\$2.50 Good for subway & bus  
and good for one free transfer  
between subway-bus or bus-bus



# Lunch & Dinner

- Today – today only – you can ask for a sandwich IF you plan to listen to Steve Ritz talk about the P5 report (covers the strategic vision for US particle physics)
  - Audio conference ((559) 726-1300 participant access code: 459039#) with slides (<http://usparticlephysics.org/p5archive>)
  - 12:30pm IMMEDIATELY following the morning session that ends at 12:30pm IN THIS ROOM
  - If you registered yesterday you did not have a chance to place a sandwich order – please do so this morning as soon as possible with the secretariat
- On the website there is a list of local restaurants by distance from here
  - The closest to here are generally along Broadway
  - Listing shows Zagat rating (where available) and YELP \* rating to guide you
- There are many dinner choices, again the list of local places is provided but there are many more in lower Manhattan



# Connectivity, Social Media & Apps

- Use the 'Columbia University' SSID – open, no password
  - Do not use 'Columbia Secure' since requires Columbia account
- Use 'Barnard Guest' SSID in dorm rooms – open, no password
- There is a Twitter feed
  - The official Twitter feed @LHCPhysics will provide announcements, information and reminders throughout the conference. Also, if participants would like to Tweet about activities during the conference, it is recommended to use #LHCP
- For handheld information use the conf4me application (iPhone, Android, Windows Phone)
  - Find app at [http://conference4me.psnc.pl/?page\\_id=28](http://conference4me.psnc.pl/?page_id=28)