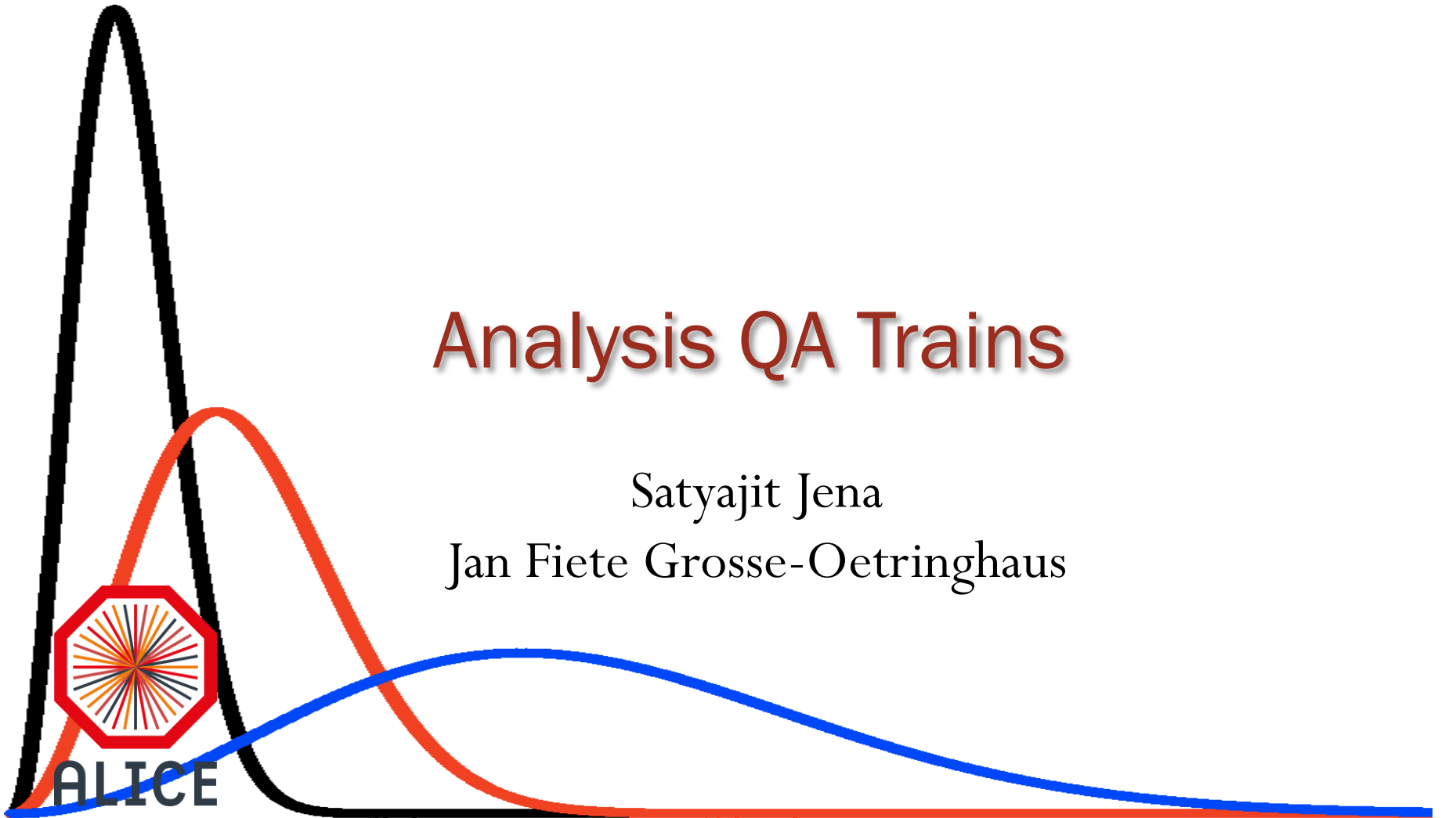


Analysis QA Trains

Satyajit Jena

Jan Fiete Grosse-Oetringhaus



07-11-2013, Offline Week

07-11-2013, Offline Week



ALICE

Introduction

- To run the analysis driven QA tasks that are supposed to validate the newly created productions (e.g. re-filtered AODs)
- *Trains:*
 - AOD: https://alimonitor.cern.ch/trains/train.jsp?train_id=70
 - ESD: https://alimonitor.cern.ch/trains/train.jsp?train_id=69
 - *pp, pA, PbPb are as Groups*
- *Mailing list: alice-analysis-qa@cern.ch*
- *Twiki:*
 - <https://twiki.cern.ch/twiki/bin/viewauth/ALICE/AnalysisQA>



PWG	STATUS	AOD	ESD
PWGCF	Foreseen(3)	v2 as a function of pT AddTaskFlow*.C AddTaskPidVZEROSP.C AddTaskFlowStrange.C Projections of 3D 2 pion correlation functions Corrected associated particles per trigger yields unidentified and identified particles	
	Added(1)	PhiCorrelations_Hadrons_QA	
Response	Correlation: Wagon is set First Look: no yet Easy-to-read Macro: no yet No responses from others to configure parameters		



PWG		AOD	ESD
PWGLF	Foreseen	AliQAProdMultistrange AliAnalysisTaskQAV0 AliAnalysisTaskQAHighPtDeDx	- Same -
	Added	(1) AliAnalysisTaskQAMultistrange_PbP b_AOD	(2)AliAnalysisTaskQAMultistrange_Pb Pb (3)AliAnalysisTaskQAV0
Response	<p>First Look: AOD for (1) are file certain issue with (2) ESD; Yet no interpretation is received</p> <p>Easy-to-read Macro: question where to keep the macro (QATasks/macros) ?</p>		



PWG		AOD	ESD
PWGHF	Foreseen	QA task for D mesons AliAnalysisTaskSEHFQA A high-level QA task can be developed in case of PID QA	QA task for D mesons AliAnalysisTaskCheckHFMCProd For HFM: the muon QA at <u>ESD</u> level is probably enough.
	Added	1. HFETPCTOF PID task	
Response	First Look: summary for (1)– (discussed later in the talk) Easy-to-read Macro: Received Task to Do: <ul style="list-style-type: none">•TPC PID Alone QA•TPC TRD PID QA•TPC EMCAL PID QA		



AnalysisQA_PWGDQ

PWG		AOD	ESD
PWGDQ	Foreseen	QA task for $J/\psi \rightarrow e^+e^-$ AddTask_jpsi_Default	
	Added	AddTask_jpsi_Default	
Response	Updates are committed Need to fix the parameter in Wagons		



PWG		AOD	ESD
PWGJE	Foreseen	High-pt track QA: AliPWG4HighPtTrackQA Jet QA: AliAnalysisTaskEmcalJetTriggerQA: Need to converge on Settings, <u>AddTask</u> macro, probably 1 task for charged jets and one for full jets	
	Added	Needs many depended wagons to be added	
Response	Need to decide for separate QA tasks for PP and PbPb		



AnalysisQA_PWGGA

PWG		AOD	ESD
PWGGA	Foreseen	π^0 spectrum in PHOS TaskPHOSPi0pPb	
	Added	GammaConvV1_PbPb2	
Response	pi0 invariant mass analysis and the photon correlation analysis (optional) and standard QA analysis (optional)		



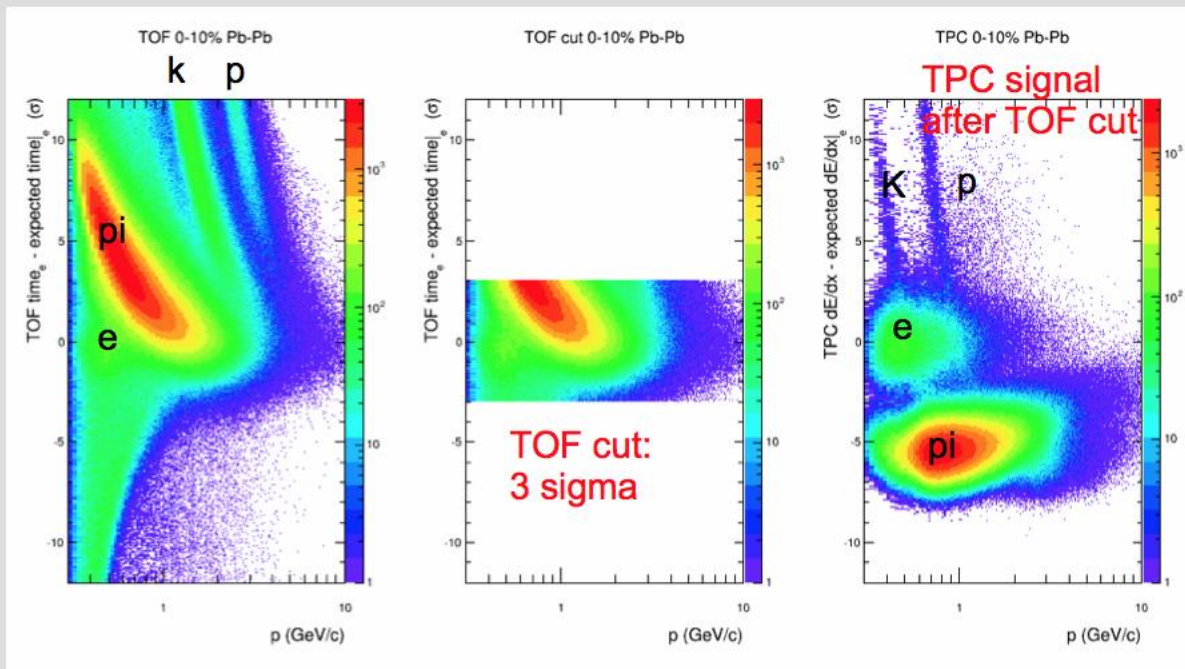
ALICE

AnalysisQA_PWGUD

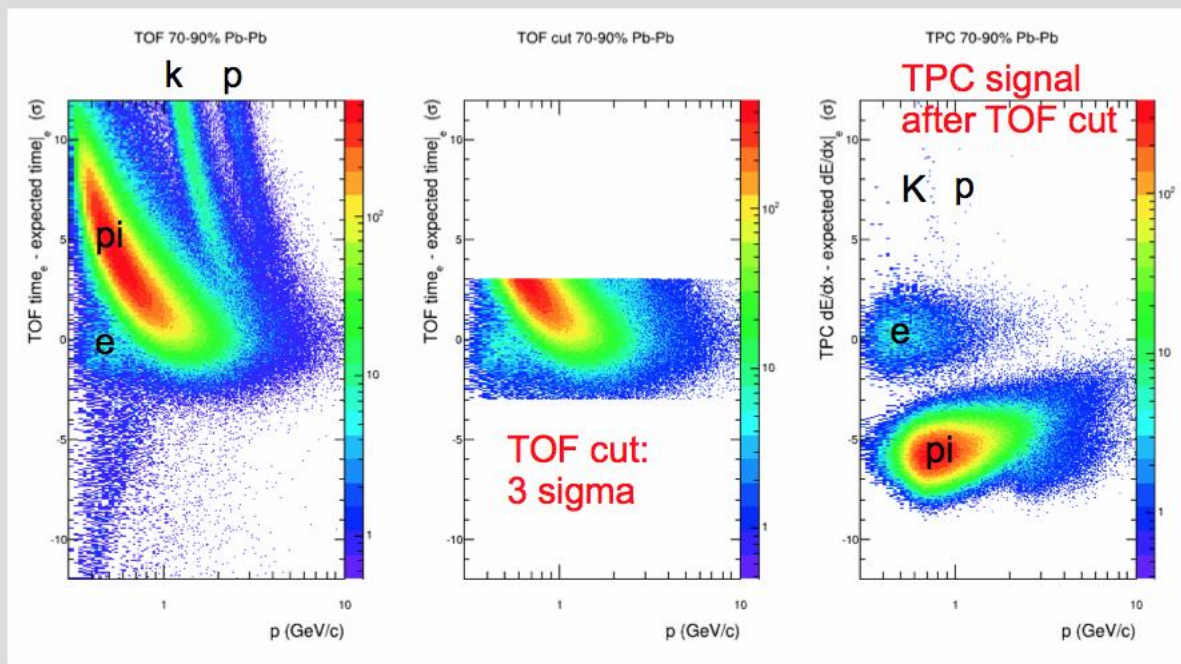
PWG		AOD	ESD
PWGUD	Foreseen	UPC J/psi analysis in the forward region	
	Added		
Response	Recently joined in Analysis Trains. Will provide the QA tasks very soon		

- AOD:
 - LHC10h_AOD142
 - Run number: 136851, 136854, 136879, 139107, 139173, 139437, 139438
 - Train ID#5
 - Wagons: 5 (EventPlane, PIDResponse) + 3 QA Wagons
 - Memory: Max $\sim 695\text{MB/evt}$
- ESDs:
 - LHC10h_P2
 - Run number: Good_Runs_No_V_Drift_Problems
 - Train ID#2
 - Wagons: 5 (PhysSec, Centrality, PIDresponse) + two QA wagons
 - Memory: Max $\sim 600\text{MB/evt}$

Electron PID 0-10 % Pb-Pb (AOD 142)



Electron PID 70-90 % Pb-Pb (AOD 142)



Analysis QA: Summary Table

PWG	tasks on twiki	responses by responsables	ready to run		ran successfully	macro to extract output	info what to compare
			AOD	ESD			
CF	3	2	1		1		
LF	3	2	1	2	1		
HF	4	1	1	1	1	1	
DQ	1	1	1				
JE	2	2	0				
GA	1	1	1				
UD	1	1	0				

- Physics Selection QA:
 - Do we need to keep some histograms?
- Reference Plots
- MC trains will be created once these ones are going
- Integrations of easy-to-read macros
- Twiki Documentation is ongoing
- What is the acceptable place holder for macros:
 - AliRoot?
 - Twiki?