

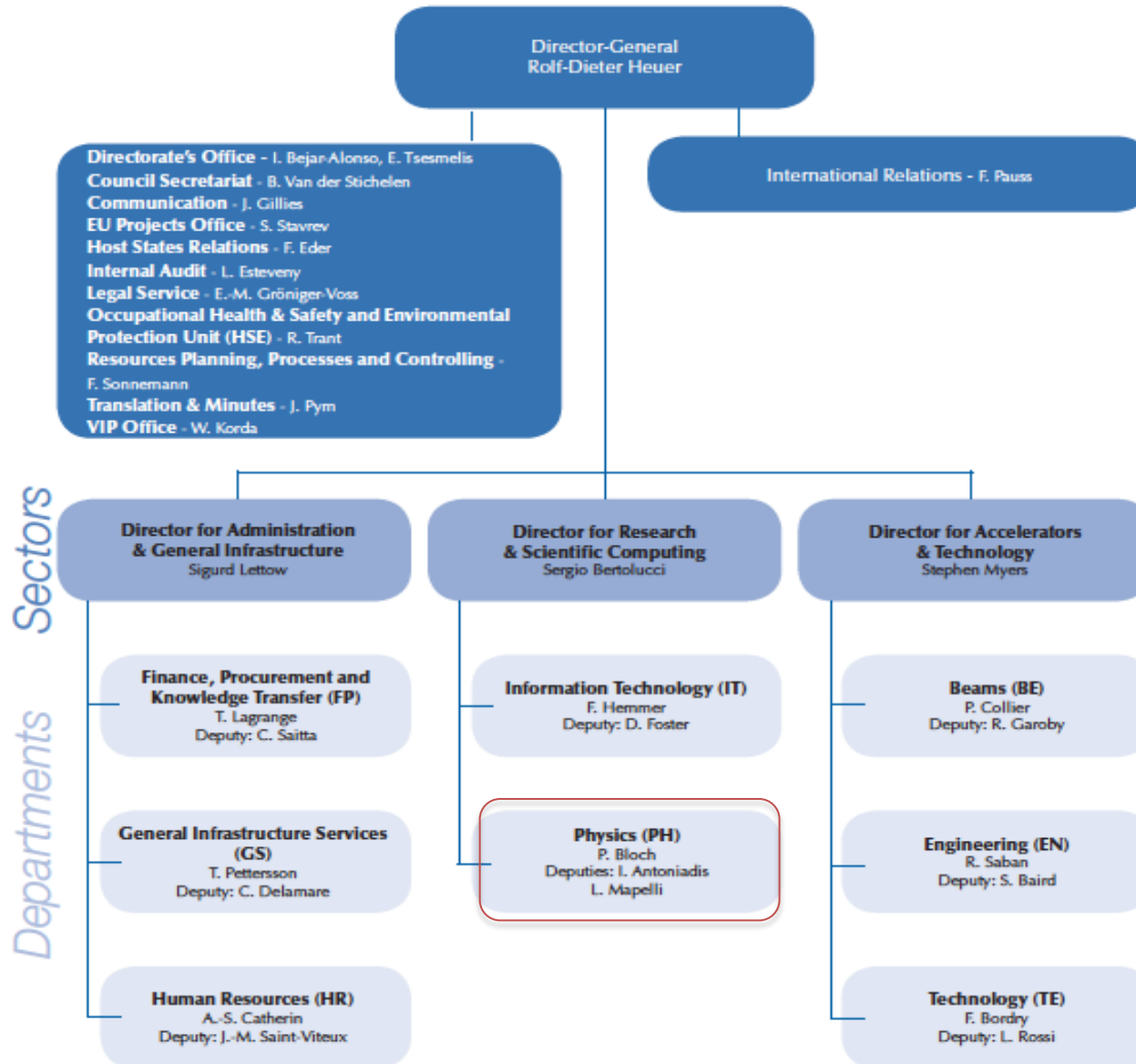
CERN PH-DT

www.cern.ch/ph-dep-dt/

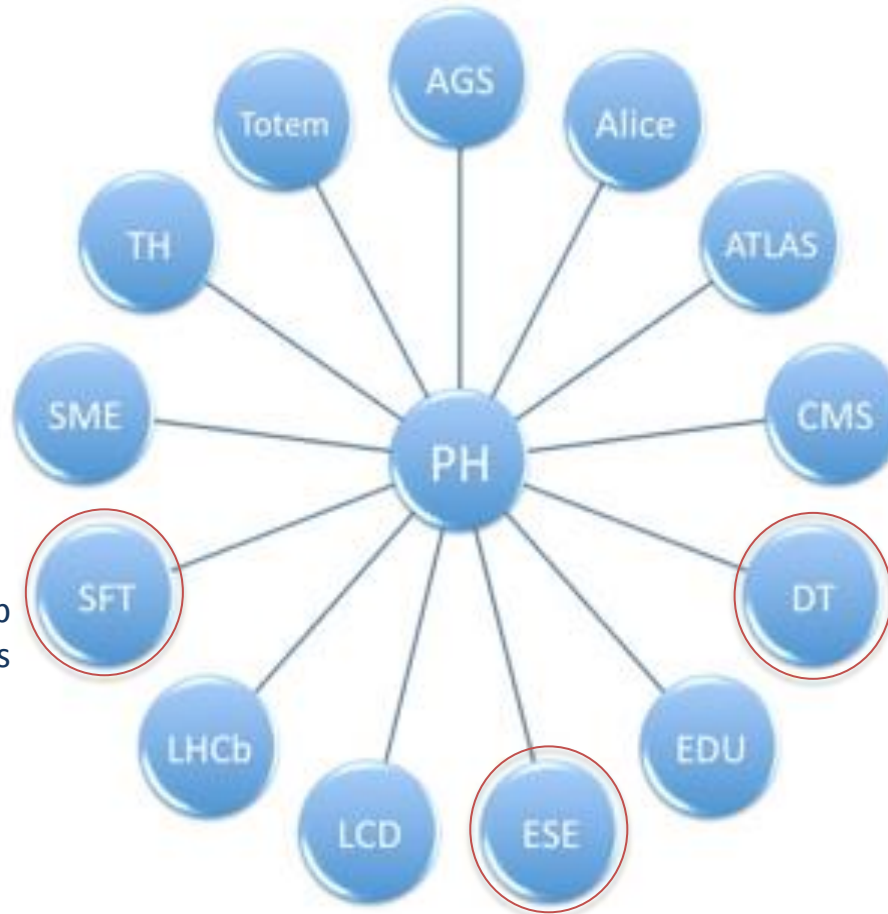
Mar Capeans



CERN Organization



PH Department



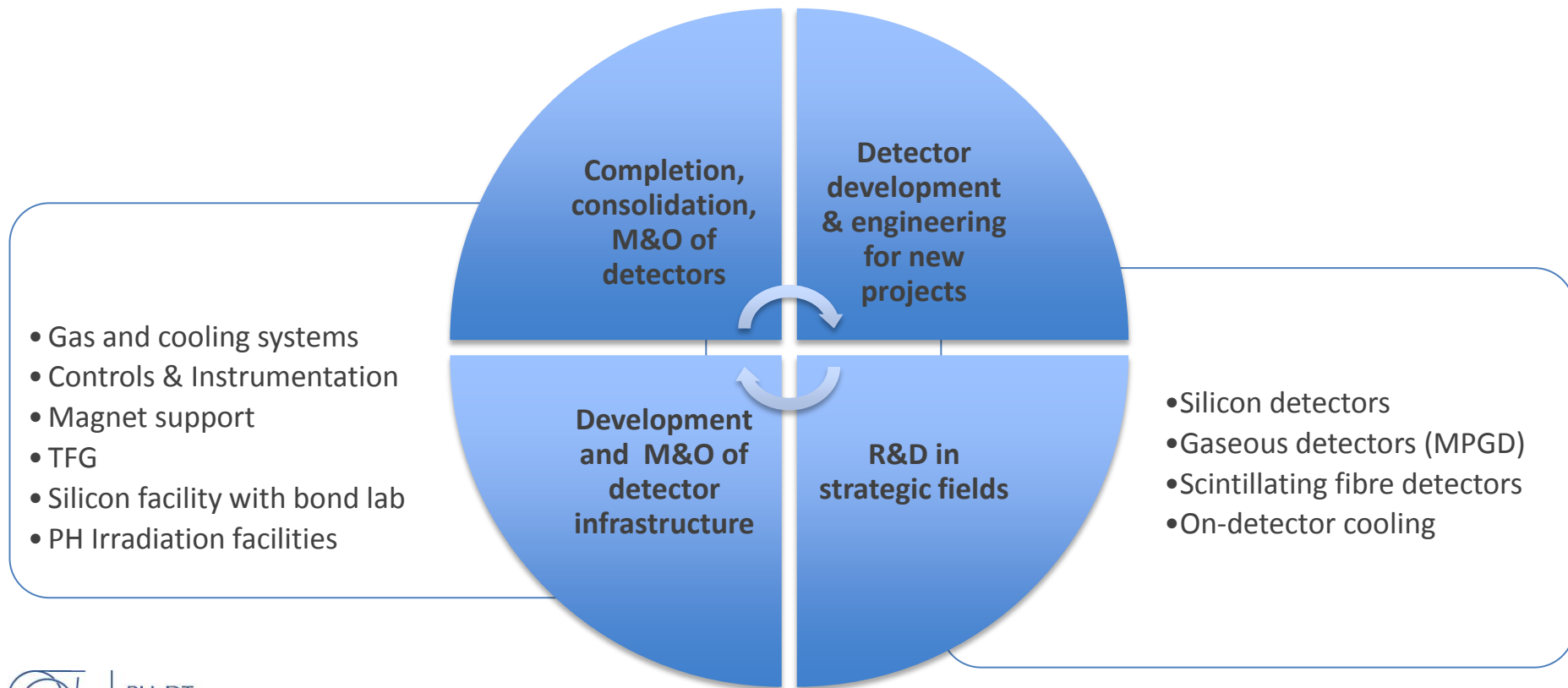
Support Group
Software for experiments

Support Group
PH-DT
Detectors Technologies

Support Group
Electronics for experiments

DT Group Mandate

The **mandate of the PH-DT** group comprises development, construction, operation and maintenance of **particle detectors for the experiments** at CERN. The group also offers a range of **services and infrastructure** for experiments and detector R&D



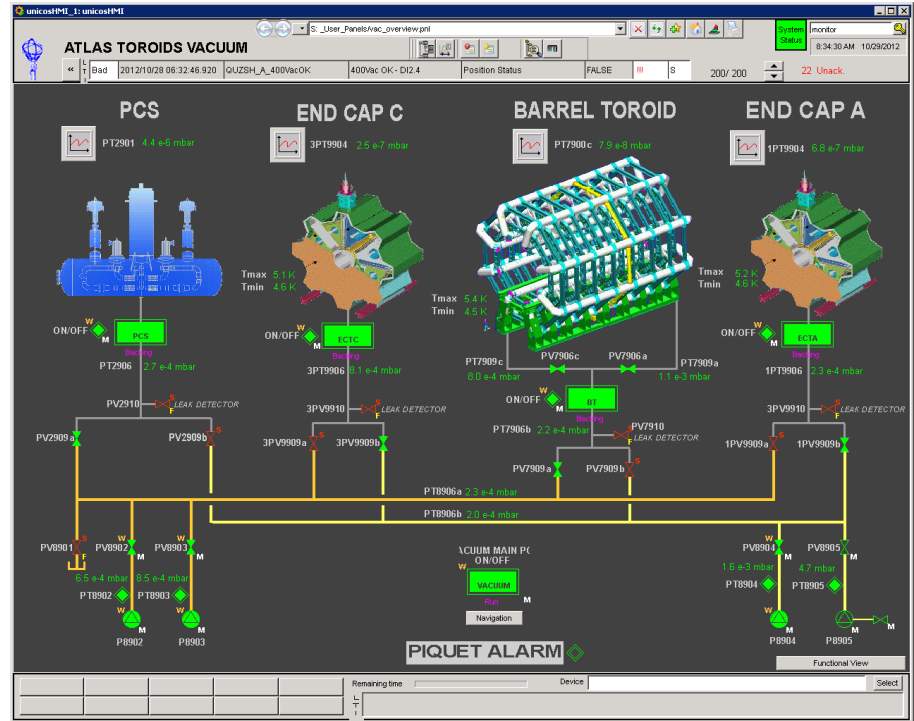
Particle detectors development & construction (e.g. ATLAS TRT)



Control and Safety Systems



COMPASS Magnet Controls



ATLAS Magnet Vacuum System

PH-DT Detector Technology

Group leader: Mar Capeans

Deputy: Andrea Catinaccio

Secretariat: Veronique Wedlake

Engineering Organization of EO, EM 1 & 2 : Andrea CATINACCIO

Safety linkman: Mark Hatch

Detector Infrastructures (DT-DI)

Mar CAPEANS

Meas. and Controls

BERGSMAS Felix
BLANC Pascal
BOURGEOIS Nicolas
DERONT Laurent
MAIRE Gilles
PONS Xavier
RAVAT Sylvain

Gas

GUIDA Roberto
CARRIE Patrick
D'AURIA Andrea
DE MENEZES Louis-Philippe
MERLET Frederic
PAVIS Steven
WASEM Albin

Cooling

PETAGNA Paolo
DAGUIN Jerome
GODLEWSKI Jan
TROPEA Paola
ZWALINSKI Lukasz
DZIURDZIA Piotr (TECH)
FEIGL Simon (MCFELL)
KRZEMPEK Lukasz Piotr (TECH)
MANDELLI Beatrice (DOCT)
ROMAGNOLI Giulia (DOCT)
SZWARC Tomasz Jakub (TECH)

Detector Development (DT-DD)

Michael MOLL

TGF

SCHNEIDER Thomas Hans
DAVID Claude
VAN STENIS Miranda

Si Detectors

HONMA Alan
MANOLESCU Florentina
MCGILL Ian

Gas Detectors

ROPELEWSKI Leszek

Irrad. Facilities

GLASER Maurice
FORTIN Richard G
RAVOTTI Federico

GALLRAPP Christian (FELL)
NEUGEBAUER Hannes (DOCT)
OLIVERI Eraldo (FELL)
THUINER Patrick (DOCT)

Technology and Physics (DT-TP)

Burkhard SCHMIDT

DAVENPORT Martyn
GYS Thierry
HAHN Ferdinand
HAIDER Stefan
JORAM Christian
KLEMPF Wolfgang
MARTINENGO Paolo

CASTILLO GARCIA Lucia (DOCT)
HELLER Matthieu (MCFELL)
KRUGER Andreas (TECH)
PALUCH Robert Michal (TECH)
VAFEIADIS Theodoros (FELL)

Engineering Office (DT-EO)

Andrea CATINACCIO

BAULT Christophe Daniel
DEGRANGE Jordan
GARGIULO Corrado
JAMET Olivier
LENOIR Philippe
MIGNE Julien
WERTELAERS Piet

BERRUTI Gaia (DOCT)
ESPOSITO Marco (FELL)
MAODDI Pietro (DOCT)
MAPELLI Alessandro (FELL)
NUIRY Francois-Xavier (FEL)

Engineering & Mechanics 1 (DT-EM1)

Antti ONNELA/
deputy Raphael DUMPS

ANSTETT Didier Henri
BOUVIER Philippe Jacques
CANTIN Bernard
DENARIE Charles-Henri
IJZERMANS Pieter
KOTTELAT Luc-Joseph
KRISTIC Robert
LESENECHAL Yannick
LOOS Robert
PIEDIGROSSI Didier
VAN BEELEN Jacob Bastiaan

LIMA DA COSTA E SILVA
Pedro Miguel (FELL)

Engineering & Mechanics 2 (DT-EM2)

Hans DANIELSSON/
deputy Pierre-Ange GIUDICI

BENDOTTI Jerome
BODE Alain
BRUNEL Bernard
CHARRA Patrick
DIXON Neil David
GARNIER Francois
G. M. DE OLIVEIRA Antonio
NOEL Jerome
PEREZ GOMEZ Francisco
VERGAIN Maurice

SERGI Antonino (FELL)

March 2013



Detector Infrastructure (DI) Section

Gas Systems

LHC M&O
~25 Gas systems

CLOUD
NA62
Beam Test Areas
Linac4...

Cooling

LHC M&O
CO₂ plants (ATLAS
IBL and CMS Pix)

Development
cooling concept &
projects

Instrumentation and Controls

LHC experimental
magnets M&O

ATLAS ALFA, TOTEM,
NA62, ArDM, AEGIS,
COMPASS...
B-field meas.

2014 Projects

- Continuation of the successful collaboration between CUT and PH-DT **cooling** team
- Since 2013, more on fluids.... Contribution to the **Gas systems** activities (calibration stations, controls for diverse lab setups, ...)
- In 2014, incorporation of projects on **controls** of diverse hardware (step-motors for beam pipe alignment, readout of sensors,...)

Student profile depends on specific project, but in general he/she will have or acquire:

- Knowledge of instrumentation & controls engineering
- Basic knowledge of electrical circuit design
- Basic knowledge in LabView programming, communication protocols
- Be highly motivated and quick learner of CERN tools: LabView Advanced, AutoCAD Electrical, PVSS...

Merry Christmas



