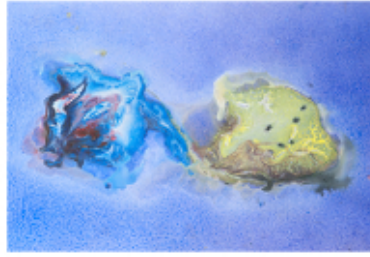


Quark Confinement and the Hadron Spectrum XI



Contribution ID: 215

Type: **not specified**

Hadron Structure from Lattice QCD

Monday 8 September 2014 14:00 (30 minutes)

Recent progress in lattice QCD calculations of hadron structure will be presented, with an emphasis on nucleon structure. Calculations of nucleon form factors have long been difficult to reconcile with experiment, but with advances in both methodology and computing resources, this situation is changing. Agreement with experiment is beginning to be obtained for several key observables, and the improved understanding of systematics should increase confidence in predictions of unmeasured quantities. Finally, the long-omitted disconnected contributions are now seeing considerable attention and are being calculated.

Author: Dr GREEN, Jeremy (Institut für Kernphysik, Johannes Gutenberg-Universität Mainz)

Presenter: Dr GREEN, Jeremy (Institut für Kernphysik, Johannes Gutenberg-Universität Mainz)

Session Classification: Parallel II: B1 Light Quarks

Track Classification: Section B: Light Quarks