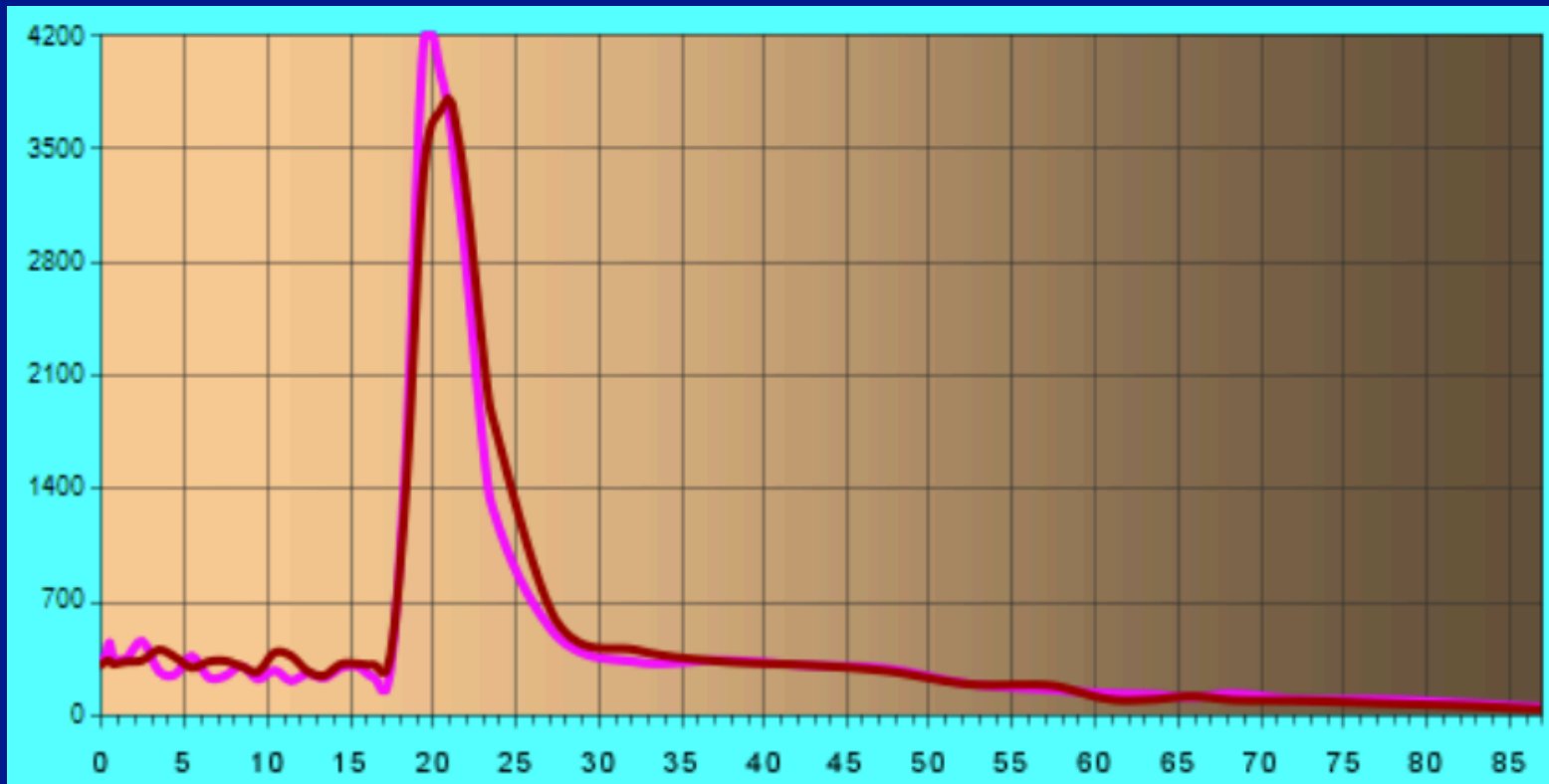


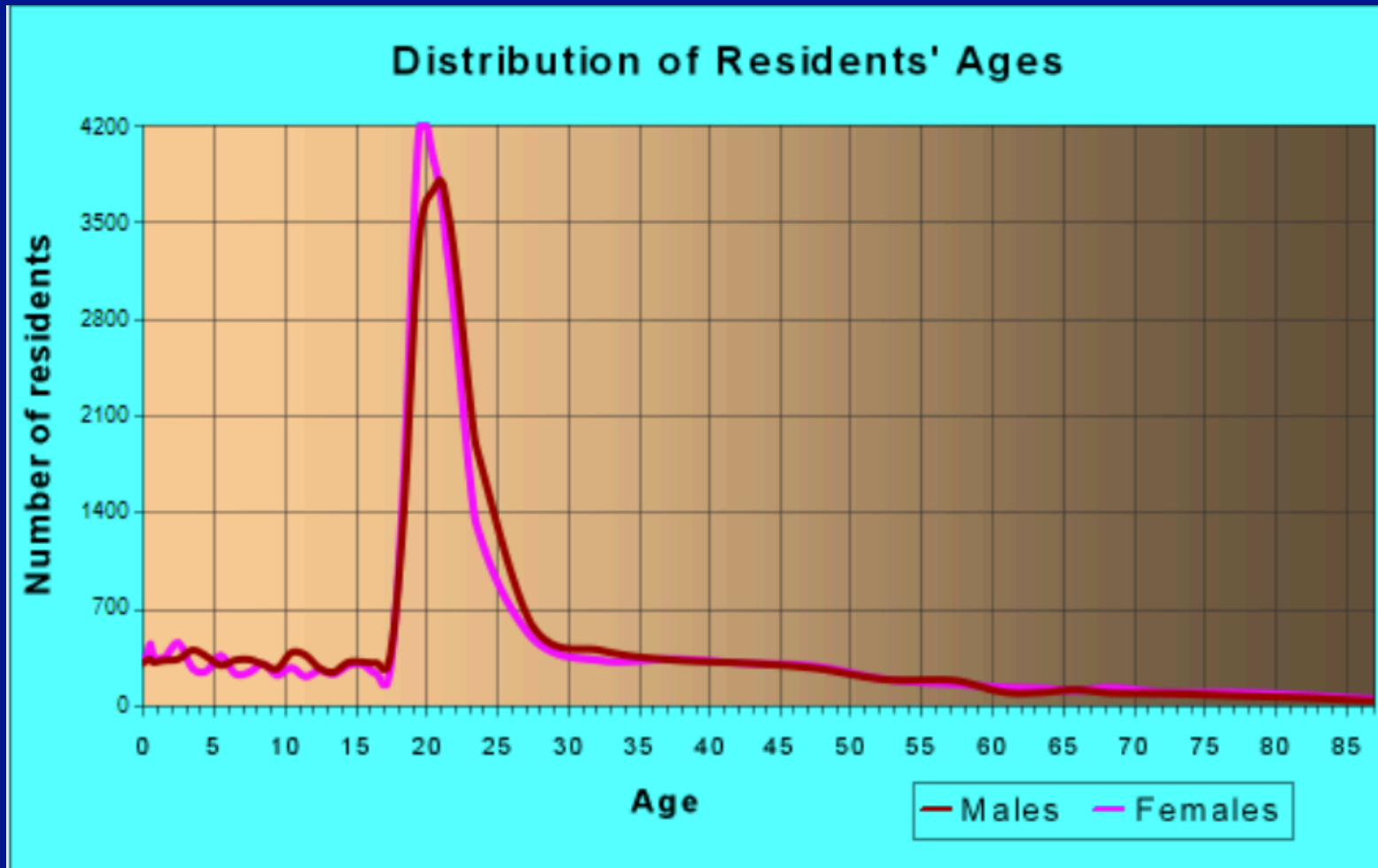
some points raised yesterday

- VFAT3 design & GE1/1 DAQ system presented
- Prototype steps P1, P2 and P3 shown.
 - P2 for test beam, Cosmic stand & slice test.
 - P3 for final system
- Occupancy and implications on dead time for long pulse shaping.
- Should be verified.
- Decision to fix 8 eta partitions for long and short GEMs for GE1/1
- VFAT3 MTSPE (currently programmable from 1-4). Do we need more ?
- Would be useful to have a P2 system located in the US.
- P2 initial hardware components scheduled for summer 2014.
- Little or no hardware design to do in the uTCA, system assembly, system software to do..
- OHV2 has both hardware and firmware to develop (see next slides).

?



College Station



Modules & Application Systems

Components / modules		Applications					
Name	responsibility	P1	P2 CERN Cosmic Stand Syst. dev. 2014 onwards	P2 Test beam ? End of 2014	P2 Slice Test 2016	P3 Cosmic Stand Development 2016 onwards	P3 Final System LS2
		System Development Team @ CERN Leader coordinating SW, FW & construction			System Development Team @ CERN Leader coord. SW, FW & construction		
VFAT2	CERN						
VFAT2 Hybrid	LUT						
GEB V1	LUT						
GEB V2	LUT						
GEB V3	LUT ?						
OH V1	ULB						
OH V2 HW	ULB / TAMU						
OH v2 FW							
OH V3 HW							
OH V3 FW							
VFAT3 Emulator							
VFAT3	CERN / Bari						
Links							
GLIB							
uTCA (system)							

 Component required for this application

Workshop goal : Complete the left hand side of the table with components / modules including suggested institute responsibility. These then feed into the Application columns.

OHv1 & OHv2 Hard/Firm - ware Modules

Components / modules			Applications					
Name		responsibility	P1	P2 CERN Cosmic Stand Syst. dev. 2014 onwards	P2 Test beam ? End of 2014	P2 Slice Test 2016	P3 Cosmic Stand Development 2016 onwards	P3 Final System LS2
				System Development Team @ CERN Leader coordinating SW, FW & construction			System Development Team @ CERN Leader coord. SW, FW & construction	
GBT module	HW							
Optical SFF/P	HW							
FPGA	HW							
JTAG	HW							
Powering	HW							
Cooling	HW							
VFAT2 Control	FW							
Track DP > uTCA	FW							
Trig DP > uTCA	FW							
Trig Zero Sup	FW							
Serialiser > TMB	FW							
SEE Mitigation	FW							

 Component required for this application

OHv3 Firmware Modules

Components / modules		Applications					
Name	responsibility	P1	P2 CERN Cosmic Stand Syst. dev. 2014 onwards	P2 Test beam ? End of 2014	P2 Slice Test 2016	P3 Cosmic Stand Development 2016 onwards	P3 Final System LS2
		System Development Team @ CERN Leader coordinating SW, FW & construction			System Development Team @ CERN Leader coord. SW, FW & construction		
VFAT3 Control							
Track DP > uTCA							
Trig DP > uTCA							
Trig Zero Sup							
Serialiser > TMB							
SEE Mitigation							
VFAT3 Emulator							

 Component required for this application