

CLICdp in the Context of the European Strategy for Particle Physics

2013 statement “d”:

d) To stay at the forefront of particle physics, Europe needs to be in a position to propose an ambitious post-LHC accelerator project at CERN by the time of the next Strategy update, when physics results from the LHC running at 14 TeV will be available. *CERN should undertake design studies for accelerator projects in a global context, with emphasis on proton-proton and electron-positron high-energy frontier machines. These design studies should be coupled to a vigorous accelerator R&D programme, including high-field magnets and high-gradient accelerating structures, in collaboration with national institutes, laboratories and universities worldwide.*

FCC and CLIC at energy frontier



pp and ee design studies at high-energy frontier

2014



under/for discussion !

Progress tracking:

CERN "MAC"
machine advisory
committee

+

Common pp/ee
physics studies at
energy frontier
(follow-up by SPC or
ECFA or ???)

~2018



(PIP = Project Implementation Plan)

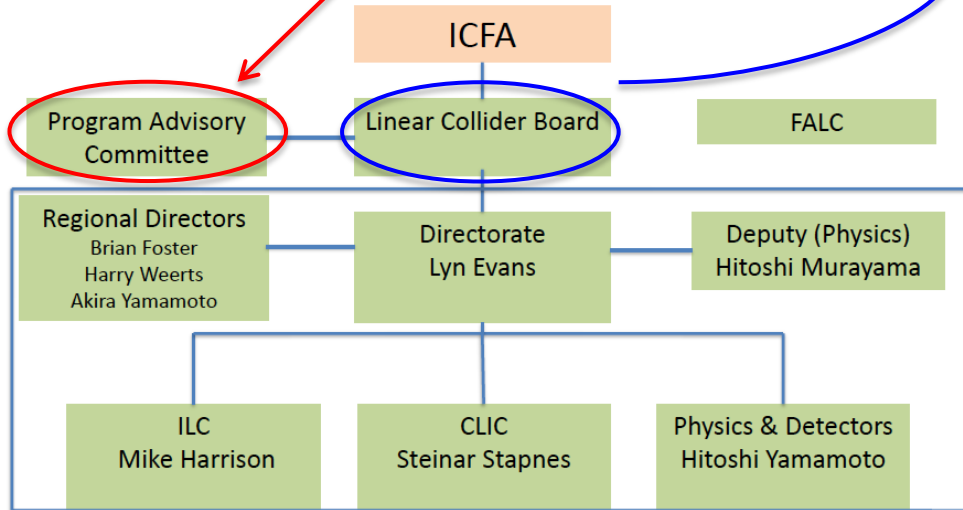
back-up slides

LCC, LCB and PAC



Organization

PAC



Members:

5 members X 3 regions + chair = 16 members + secretary

Chair	Sachio Komamiya (The University of Tokyo)
Americas	Jonathan Bagger (Johns Hopkins University) Fermilab Director (Nigel Lockyer) David MacFarlane (SLAC) Lia Merminga (TRIUMF) Hugh Montgomery (Jefferson Lab)
Asia	Jie Gao (IHEP, Beijing) Rohini Godbole (Indian Institute of Science) Sunkee Kim (RISP) Atsuto Suzuki (KEK Director) Yifang Wang (IHEP)
Europe	The CERN Director-General (Rolf Heuer) The DESY Director of Particle Physics (Joachim Mnich) Francois Le Diberder (IN2P3) The JINR Director (Victor Matveev) Lenny Rivkin (PSI)
Secretary	Roy Rubinstein

Next LCB meeting:
February 20+21 2014 at DESY

PAC review of LCC



From slides Sachio Komamiya LCWS13:

PAC (Project Advisory Committee)

The PAC will assess and / or comment (for ILC and CLIC):

- The overall physics, technical design, cost, and schedule
- The detector progress
- Civil construction and the preparatory activities
- The financial contributions and management as far as accelerator/detector design, R&D and the site preparation activities
- Schedule

Members are selected.

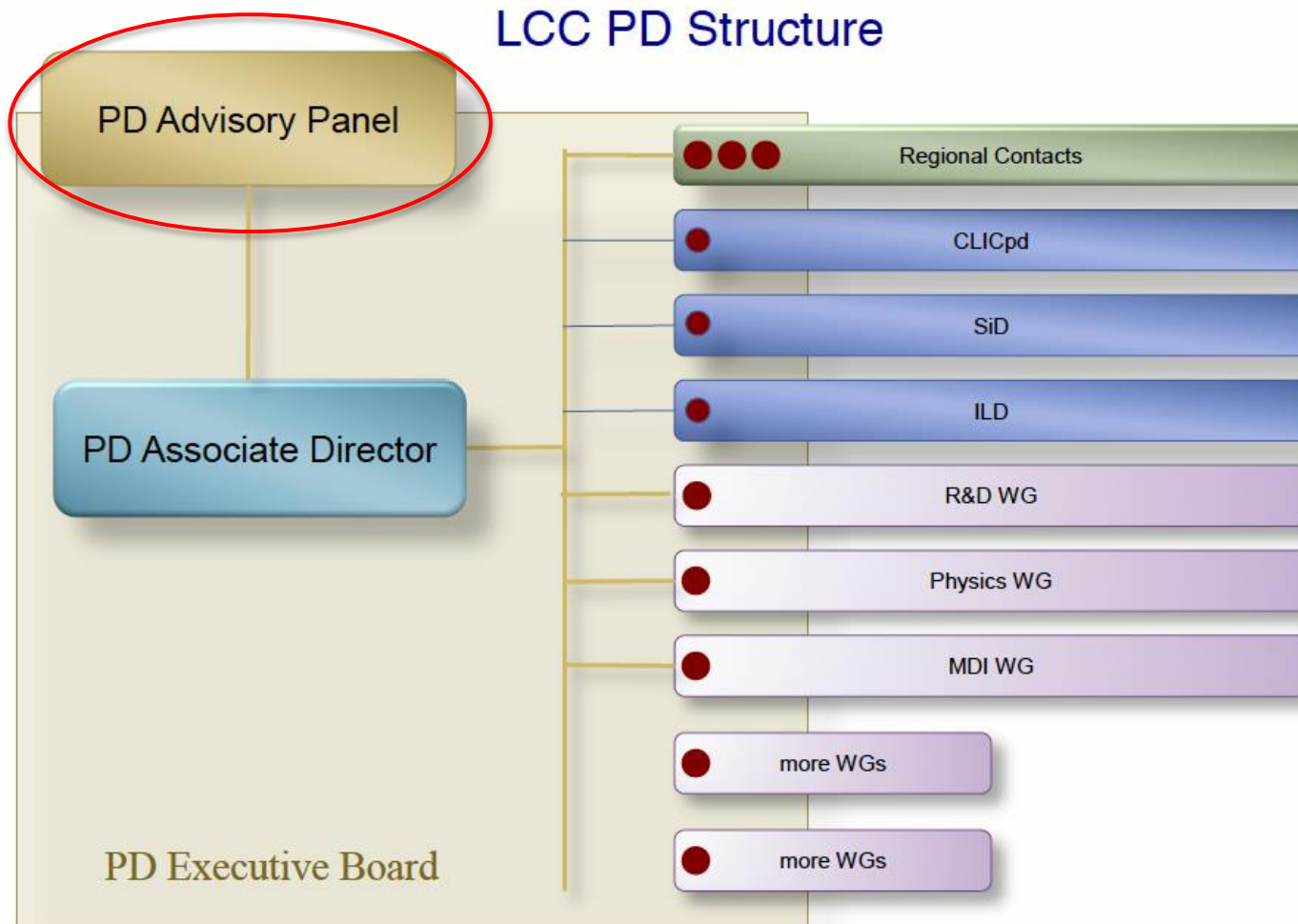
~~The first PAC meeting will be held just before the LCB meeting (18-19 February 2014 at DESY).~~

Chair	Norbert Holtkamp	
Deputy Chair	Michel Davier	
Accelerator and Project		
	Hans Weise (DESY)	Linac Construction
	Robert Orr (Tronto)	Cavity R&D
	Mark Palmer (FNAL)	Large Science Facilities
	Philippe Lebrun (CERN)	PM / Cost
	Osamu Kamigaito (RFBF Riken)	Facility construction
	Moo Hyun Cho (PAL Korea)	Linac Technology
	Eisuke Tada (JAEA/ITER)	PM / Integration
	Shinichi Akutagawa (Kobe University)	Construction Management
	Norihito Ohuchi (KEK) NOT AVAILABLE	SC-RF/ Cryomodule product.
Experiments		
	Joe Lykken (FNAL)	Physics
	Peter Jenni (CERN/ATLAS)	Detector/Physics
	Tomio Kobayashi (ICEPP, Tokyo)	Detector/ Experiments
	Hesheng Chen (IHEP, Beijing)	Detector/Experiemnts

LCC physics/detector review



From slides Hitoshi Yamamoto LCWS13:



5