

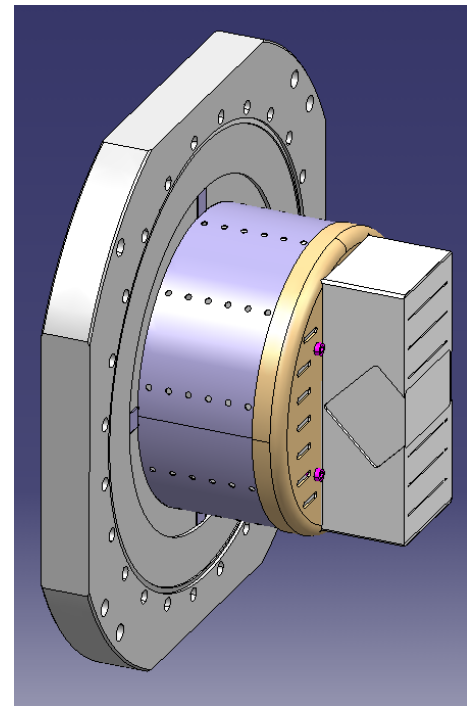
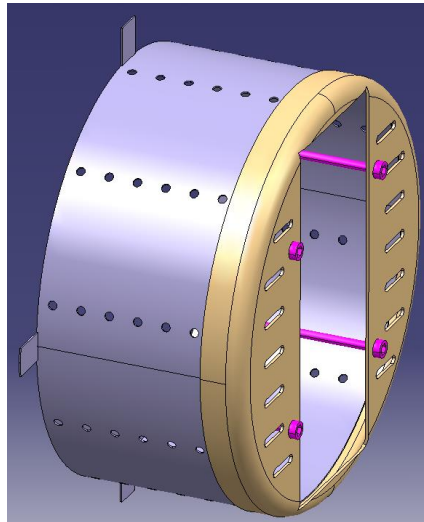
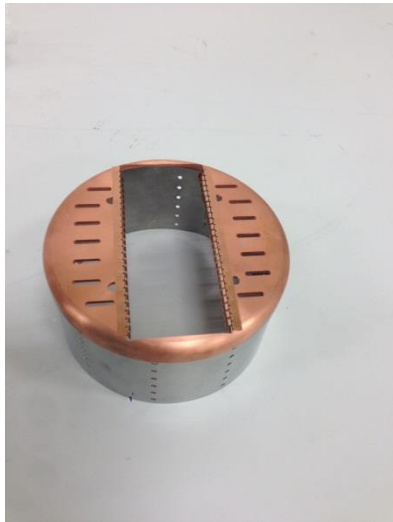
Upgrade activities

PPS

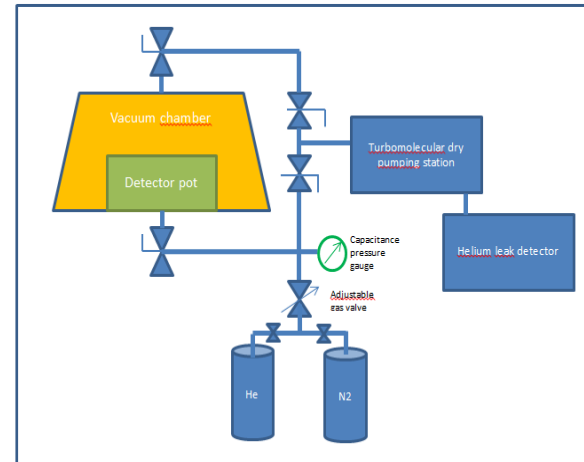
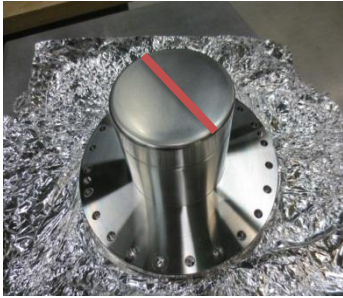
RF shield
Cylindrical RP
RF measurements
Test beam preparation

RF shield

- RF shield with RF fingers (pointing up) for test of contact



He leak test of thin window

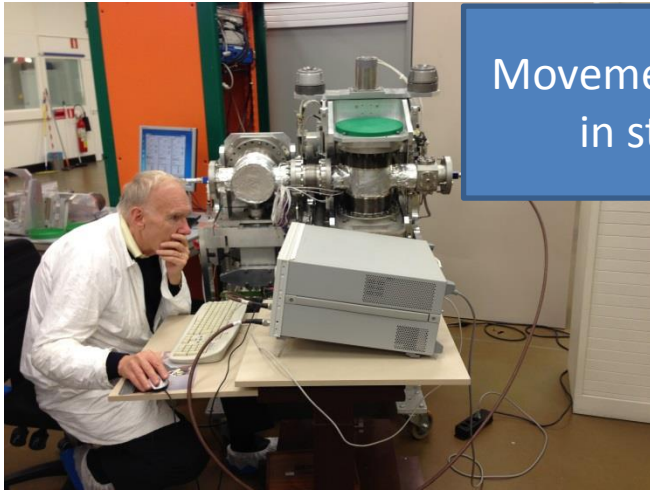


	Residual helium signal before test [mbar.l/s]	Time of helium exposure [min.]	Helium signal at end of exposure period [mbar.l/s]	Results
Initial leak test	1.7E-9	20	2.9E-9	conform
Final leak test	1.3E-9	20	2.7E-9	conform

After 30 pressure cycles

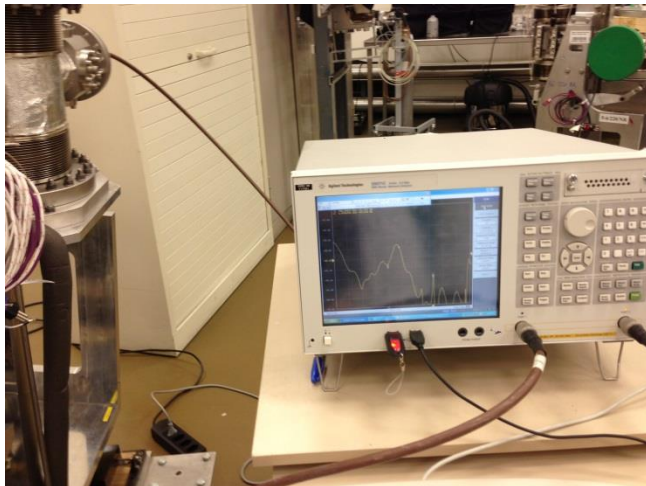
RF test of cylindrical RP (horizontal) without Ferrite

(TOTEM + BE-ABP-HSC)



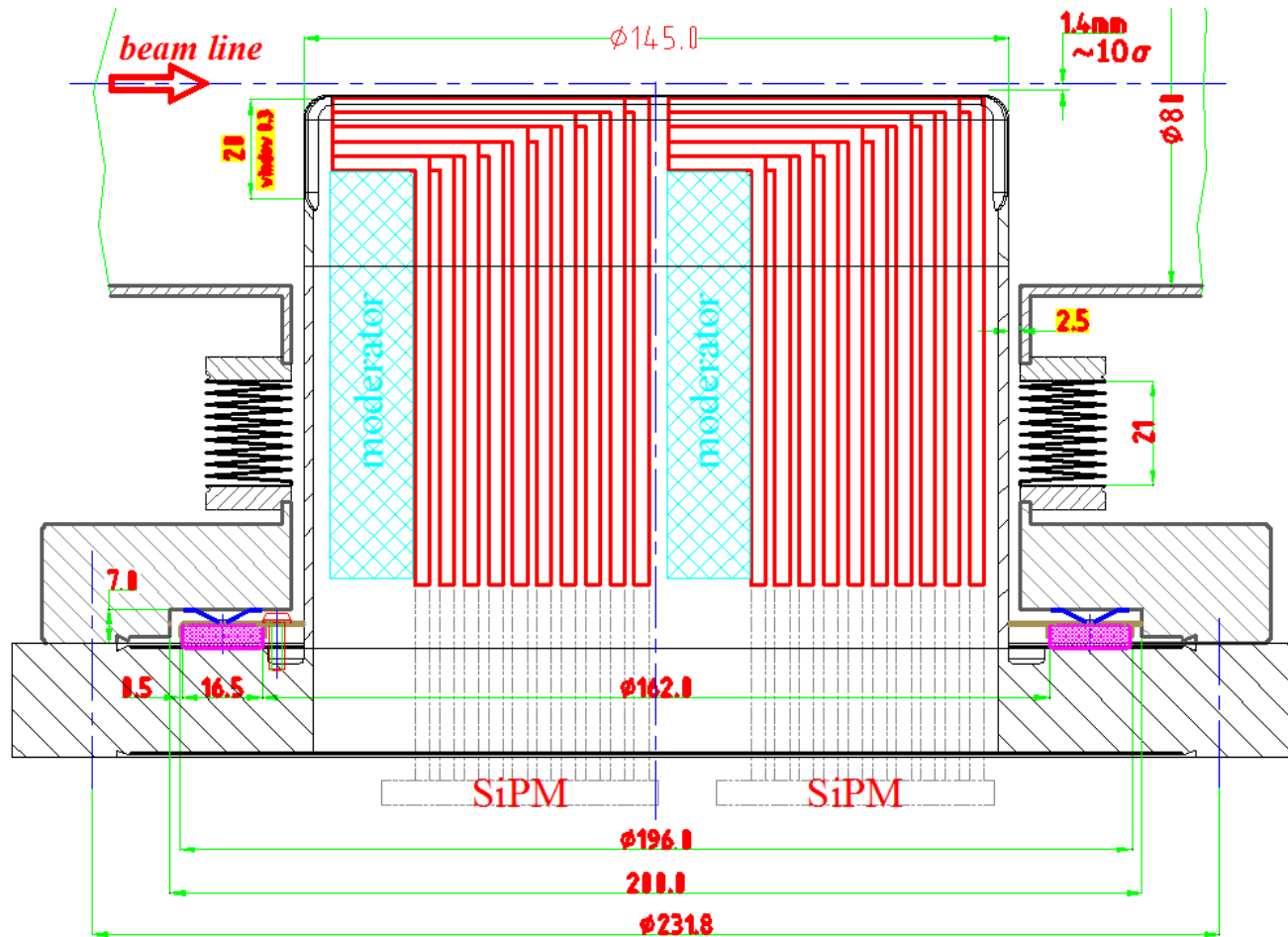
Movement of horizontal RP
in steps of 100 μm

RF impedance
measurement



LHC Working Group on Forward Physics
and Diffraction
J. Baechler

Integration and assembly test



Timing detector

- WG – Timing detector meeting on 22.1.2014
conclusion ->
Test setup (SACLAY) with SAMPIC chip
@ TOTEM timing detector test lab (SACLAY + CERN)
-> 26.2.2014
- Reference system
- Signal generation with detector

TOTEM request for test beam in 2014 for timing detector development

These are the dates allocated to TOTEM :

T9 at the PS: from July 17th to July 20 (4 days)

H8 at the SPS : Week 42 from Oct 13th to Oct 20th
(7 days)

H8 at the SPS : Week 50 from Dec 8th to Dec 14th
(7 days)

NB: dec 14th is the last day of SPS beam in the
North area before Christmas.

-> TOTEM test beam coordinator : Marco Bozzo

Ongoing activities and next steps

- Mechanical deformation of thin window (as function of pressure – $\Delta p \sim 1.2$ bar)
- NEG-Cu-NEG coating (option)
- Assembly tests :
Ferrites - RP cylinder – RF shield – RP station
- RF test in combination with ferrites (RF shield & cylindrical RP)

-
- Setting up of timing detector test lab
 - Measurements - reference system
 - Preparation of test beam line