

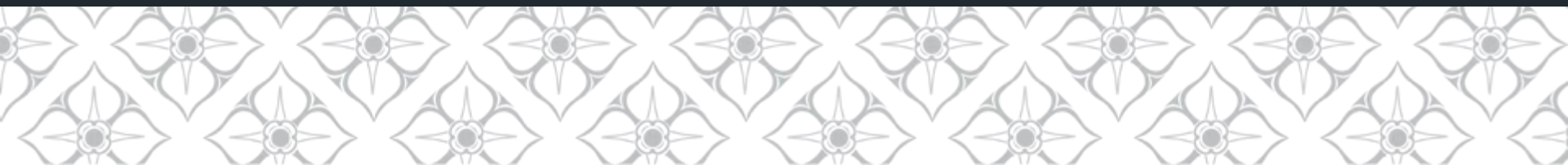


Introduction to Royal Holloway, University of London

*Professor Paul Hogg,
Vice Principal for Research and Dean of Science*



ROYAL
HOLLOWAY
UNIVERSITY
OF LONDON



The University of London & Royal Holloway



Thomas Holloway founded Royal Holloway in 1879, opened 1886

Bedford College: opened 1849.

Both Colleges admitted to the University of London in 1900 – they merged in 1992

Royal Holloway students receive a University of London degree

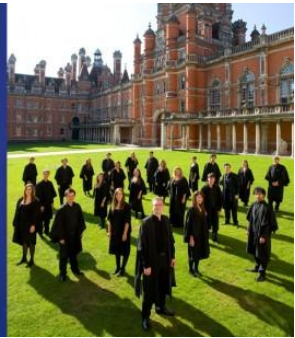
All University of London institutions are consistently ranked among the UK's top universities



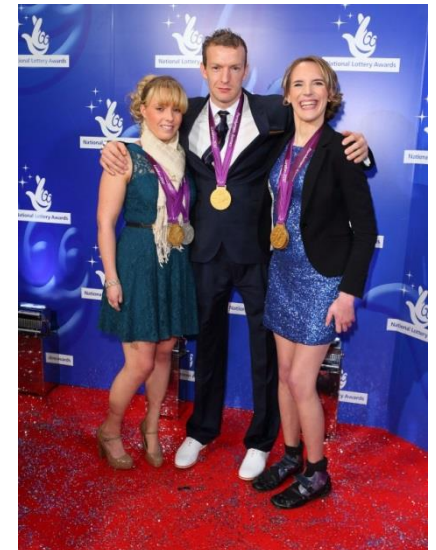
A PLACE OF CULTURE



ROYAL
HOLLOWAY
UNIVERSITY
OF LONDON



A PLACE FOR SPORT




A PLACE FOR ENTERPRISING STUDENTS

Royal Holloway Entrepreneurs (RHE) has grown from strength to strength and is now recognised as one of leading student led enterprise societies in the UK. RHE was awarded the prestigious National Association of College and University Entrepreneurs (NACUE) Enterprise Event of the Year 2013 for the annual 'Night Market'



ROYAL HOLLOWAY
ENTREPRENEURS' **MUSICAL
ENTERPRISE WEEK**

Featuring James Proud,
founder and creator of
GIGLOCATOR.com,
which lets you
discover, enjoy and
never miss a gig
again!



TOMMY'S BAR, SU
THURSDAY 17TH MARCH





Geography
Earth Science
Psychology
Physics
Computer Science
School of Mathematics and Information Security
School of Biological Sciences

Science

Dean - Paul Hogg



ROYAL
HOLLOWAY
UNIVERSITY
OF LONDON

History
Music
Classics
Media Arts
English
School of Modern Languages
(German, French, Hispanic Studies, Italian)
Politics and International Relations
Drama
Social Work



Arts and Social Science Faculty

Dean – Katie Normington



ROYAL
HOLLOWAY
UNIVERSITY
OF LONDON

School of Management

Law and Criminology

Economics



Management Economics and Law

Dean - Bob O'Keefe



ROYAL
HOLLOWAY
UNIVERSITY
OF LONDON

Royal Holloway – quick facts and figures



9,000 students from over 100 countries

20% of students from outside EU

2,000 postgrads - 1,100 research students

1,294 members of staff

Annual income £137m

Economic Impact
£480M/annum

20 academic departments



Current Research profile – ranked 18th in UK for 4* and 3* research



1	Imperial College London
2	University of Cambridge
3	University of Oxford
4	London School of Economics
5	University College London
6	University of Manchester
7	University of Warwick
8	University of Essex
9	University of Edinburgh
10	Queen Mary, University of London
11	University of York
12	University of Bristol
13	University of Southampton
14	University of Leeds
15	University of Durham
16	Lancaster University
17	University of Sheffield
18	Royal Holloway, University of London
19	Kings College London
20	University of Bath

The top score of 4* indicates quality that is world-leading and of the highest standards in terms of originality, significance and rigour followed by 3* indicating quality that is internationally excellent in terms of originality, significance and rigour and just short of the highest standards of excellence.

rae2008 Research Assessment Exercise

9 departments ranked in the Top 10

Music ranked first in the UK - it has been consistently awarded the highest research rating in all previous RAEs and is now the UK's top department.

School of Biological Sciences - ranked joint third in the UK. It has benefited from strategic investment in staff, research and teaching facilities, boosting the internationally competitive quality of its research.

Economics - ranked joint ninth in the UK. It is a relatively young department established 10 years ago with highly-regarded academic staff who advise governments and international organisations.

A further six departments are ranked in the Top 10 nationally based on 4* and 3* scores: **Drama** (joint ninth), **Earth Sciences** (joint seventh), **Geography** (joint ninth), **German** (joint fifth) **Media Arts** (joint sixth), and **Psychology** (joint fifth)

**In the South East region,
Royal Holloway ranks third
after Oxford and Southampton.**

Overall 2013- ranking – 12th in the UK, 103rd in the world (up from 118)



“truly world class”

The Times Higher Education World University Rankings 2012-2013 measures universities across all of their core missions - teaching, research, knowledge transfer and international outlook.

1	University of Oxford
2	University of Cambridge
3	Imperial College London
4	University College London
5	University of Edinburgh
6	London School of Economics and Political Science
7	University of Manchester
8	King's College London
9	University of Bristol
10	Durham University
11	University of York
12	University of St Andrews
13	University of Sussex
14	University of Sheffield
15	Royal Holloway, University of London
16	University of Nottingham
17	University of Warwick
18	University of Southampton
19	University of Glasgow
20	University of Leeds

Last year

Royal Holloway – quick facts and figures



9,000 students from over 100 countries

20% of students from outside EU

2,000 postgrads - 1,100 research students

1,292 members of staff

Annual income £137m

20 academic departments



A global university

“International Outlook”*

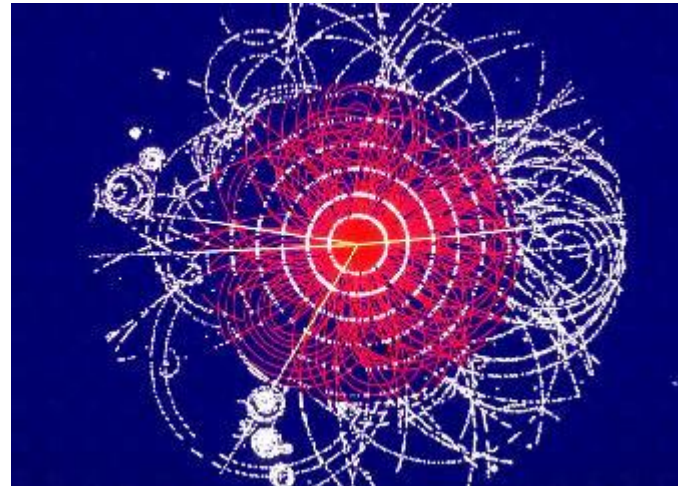
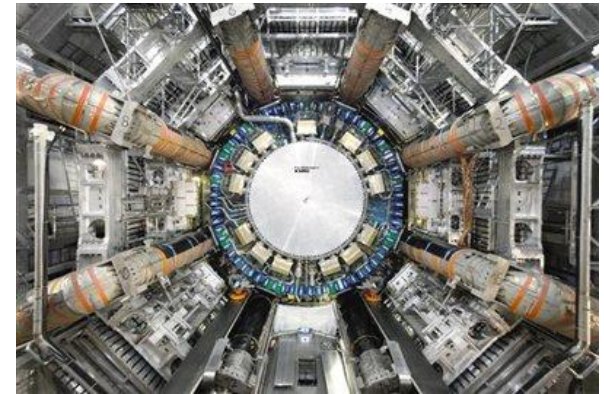
1st in the UK

4th in the world

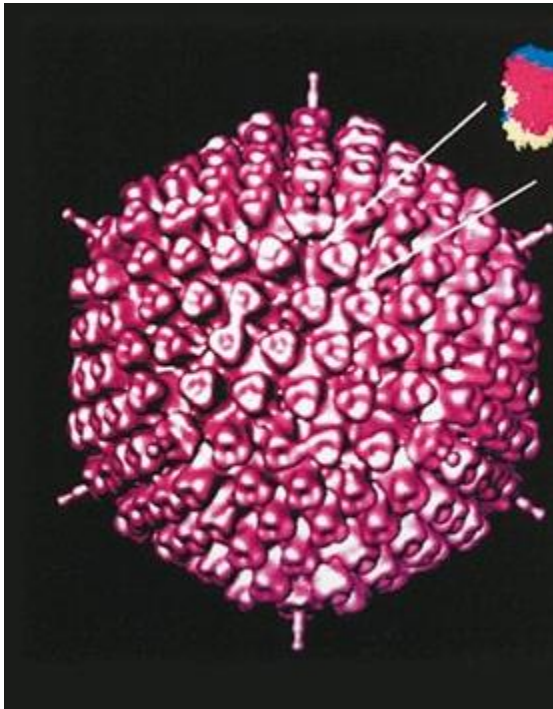
* Royal Holloway is ranked 1st in the UK (4th place in the world) in the category of 'International Outlook', recognising our broader outlook as a global university. The rankings use three separate indicators to judge 'international outlook' - proportion of international staff and students and research in terms of papers that are co-authored with at least one international partner.

Our Physicists helped find that pesky Higgs Boson particle

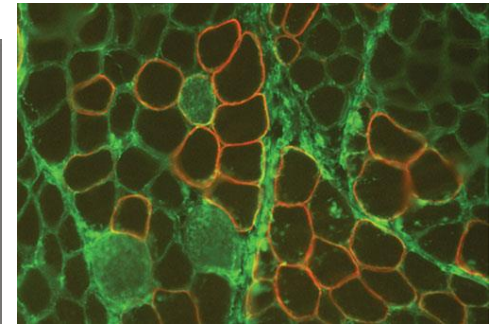
Royal Holloway's ATLAS group have made important contributions to the development of the statistical methods used to analyse the data, to the study of the important case where the Higgs boson decays into two photons, and also to the more difficult case where it decays into a pair of so-called b-quarks.



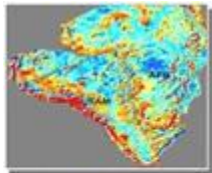
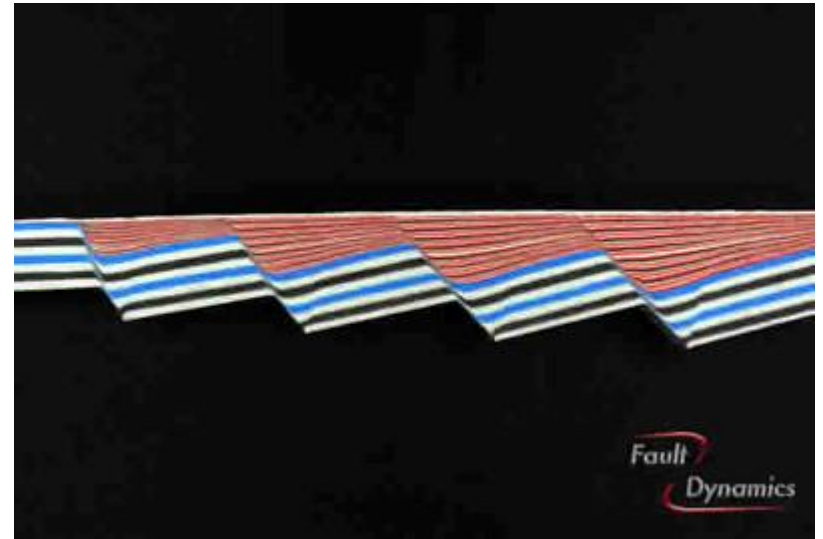
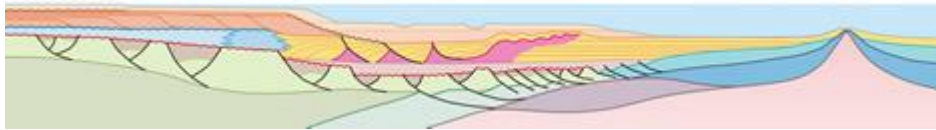
Research in Biological Sciences is pioneering Genome Therapy for rare diseases



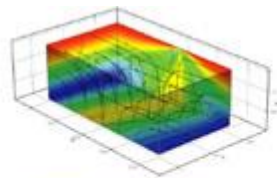
Royal Holloway is a leading institution in the development of novel therapies for rare diseases, including spinal muscular atrophy, Duchenne muscular dystrophy, and severe combined immunodeficiency



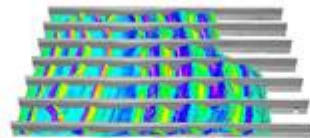
Our Earth Scientists are identifying where the world's oil reserves are hidden



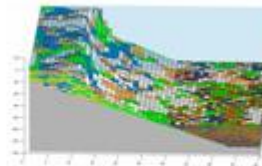
*Plate
Kinematic
Modelling*



*Computational
Geomechanical
Modelling*



*Physical Experiments
FE/DE Modelling*



*Stratigraphic
Forward Modelling*



*Regional Field
Studies*

Our Geographers are studying climate change - its causes and effects.



ROYAL
HOLLOWAY
UNIVERSITY
OF LONDON



Professor Andrew Scott reveals the high incidence of fire during the Cretaceous Period, 120 to 65 million years ago, was responsible for the spread of the earliest flowering plants



Dr Howard Falcon-Lang reveals global warming devastated tropical rainforests 300 million years ago which triggered an evolutionary burst amongst reptiles and inadvertently paved the way for the rise of dinosaurs

Our maths department pioneered research into cyber security



ROYAL
HOLLOWAY
UNIVERSITY
OF LONDON

The NEW Internet Security Department
is working on cryptography



....has exposed some problems in several of the most popular secure networking protocols including SSL (secure web connection), SSH (secure file transfer) and IPSec (secure virtual private networks).

Our Internet Security Group has also set up a smart card centre



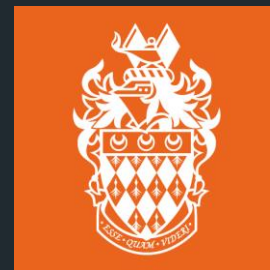
ROYAL
HOLLOWAY
UNIVERSITY
OF LONDON

The Smart Card Centre was founded in October 2002 to create a worldwide centre of excellence for training, research and consultancy in smart cards, smart tokens, security and applications

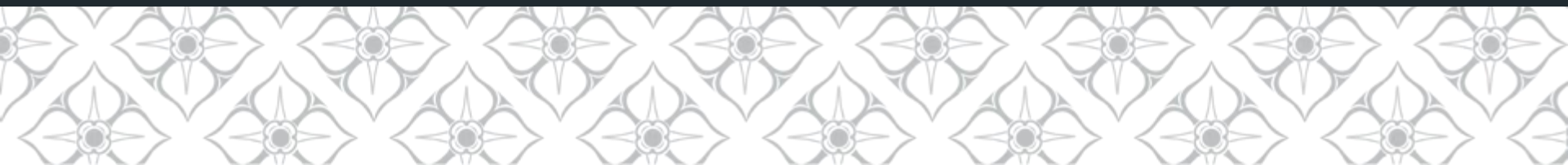




What's New? Engineering in 2017



ROYAL
HOLLOWAY
UNIVERSITY
OF LONDON



Addressing the Gender balance

How do we get more women into Science and Engineering?

How do we KEEP more women in Science and Engineering?

Our plan –

A “Clean Sheet” approach

50% academic staff women

Industrial role models

Placements and scholarships for women



What ideas do students have?

We would like to know!

