



Computation Institute

Introduction

Rob Gardner
Computation and Enrico Fermi Institutes
University of Chicago

US ATLAS Meeting
February 5, 2014

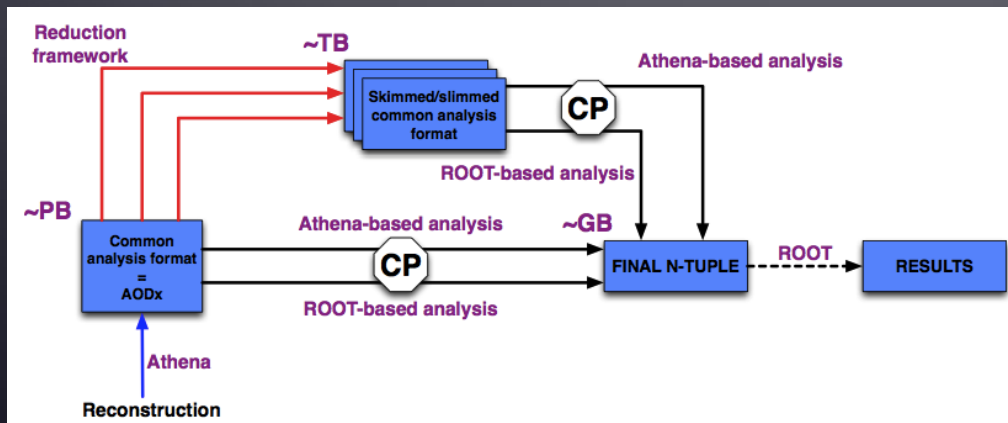


THE UNIVERSITY OF
CHICAGO

efi.uchicago.edu
ci.uchicago.edu

IP in the current quarter: FY14Q2

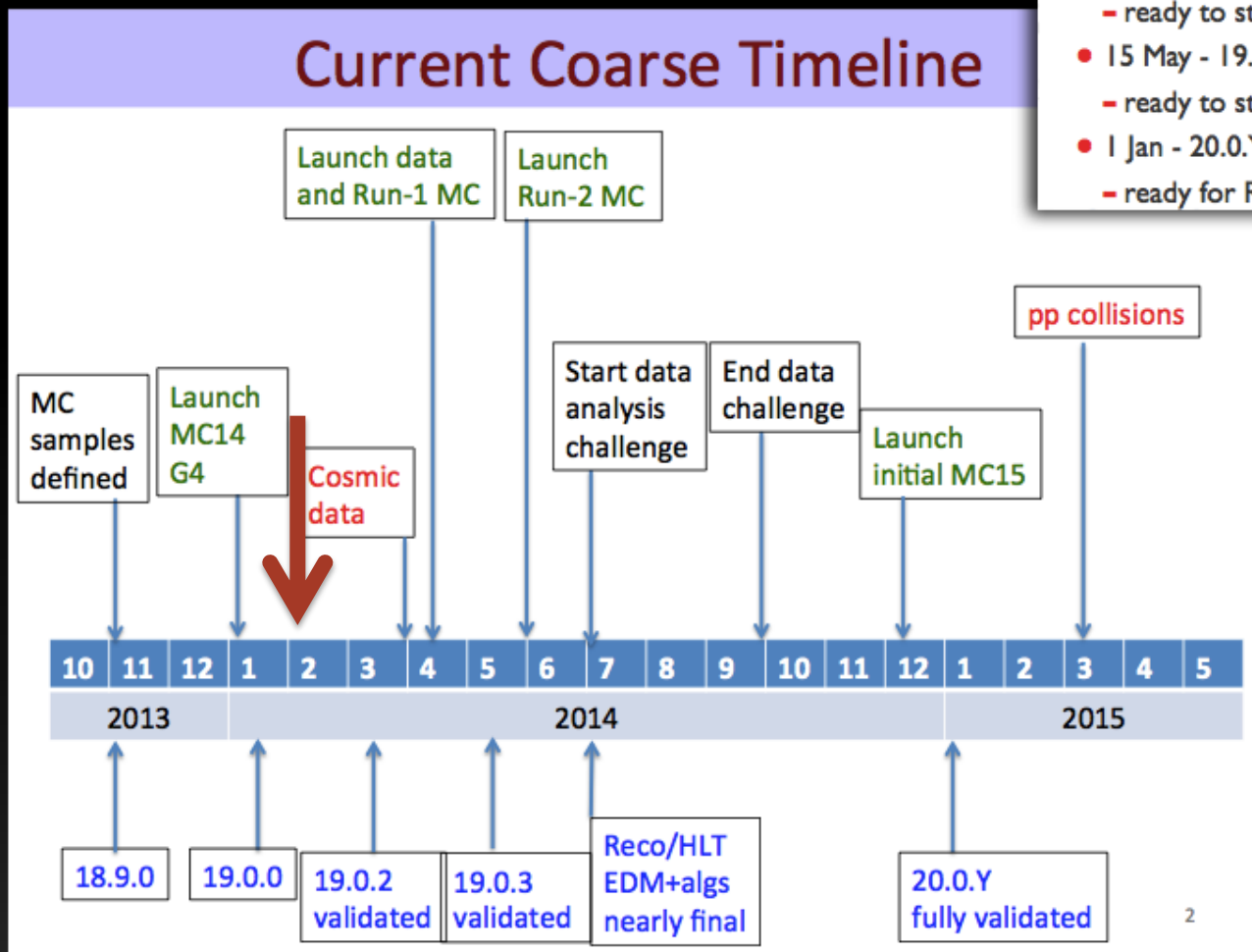
- DC14 Facility readiness and new analysis model
- MSCORE: demand & availability
- FAX in production
- Transatlantic 100 Gbps FAX demonstrator
- Flexible IT Infrastructure
- ATLAS Connect User
- ATLAS Connect Cluster (Tier 3 flocking)



Analysis Model document

Facility Readiness for DC14.. reminder

Data Challenge-14 Schedule



Key Deadlines

- 15 March - 19.0.2 validated
- ready to start Run-1 reco
- 15 May - 19.0.3 validated
- ready to start Run-2 reco
- 1 Jan - 20.0.Y validated
- ready for Run-2 data



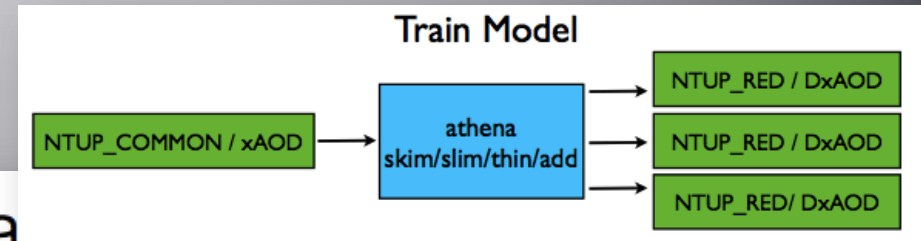
Markus Elsing

17

DF (PB → TB) xAOD

Will be grid based

TF#2 Status



Derivation framework: tools and scripts for building analysis specific data formats (~TB sized) in central production

Current status:

Core software largely done
Uses D3PD (NTUP_COMMON)
as input.

11 formats currently defined
(Top, HSG4, HSG5, HSG8, SM,
Tau, SUSY)

Runs locally or with pAthena

Production commissioning

Key aspect is that jobs run in *trains* - multiple output formats per job. Aim is to run existing 11 formats with NTUP_COMMON input in a production train early this year. Work ongoing with ADC to ensure this happens

Priority work for early 2014

- Test train production with NTUP_COMMON
- Define CP group object definitions
 - Migration to common tools (TF#3)
- Define more derivations
 - e.g. nothing from several Higgs groups, surely SUSY needs more than one format, etc etc)
- Migration to xAOD input; DxAOD output
 - Slimming
 - Thinning
 - String-parsing tool
- Development of “smart slimming”
- Migration to ProdSys-2
- DATA CHALLENGE 2014!

If you want to define a derivation, please agree with your group DPD contact and then contact TF#2

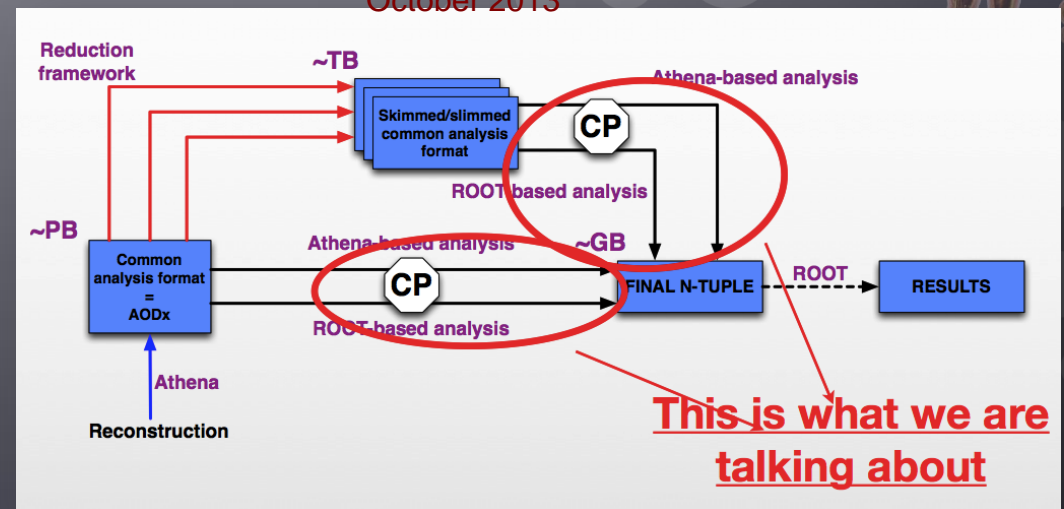


Supporting analysis in the new model

- There is an effort to build a common framework but a multitude of ROOT-based and Athena-based analyses will still be used.
- How will DF output be managed on DISK(s)?
- What changes in ANALY queues to result from xAOD-based analysis?

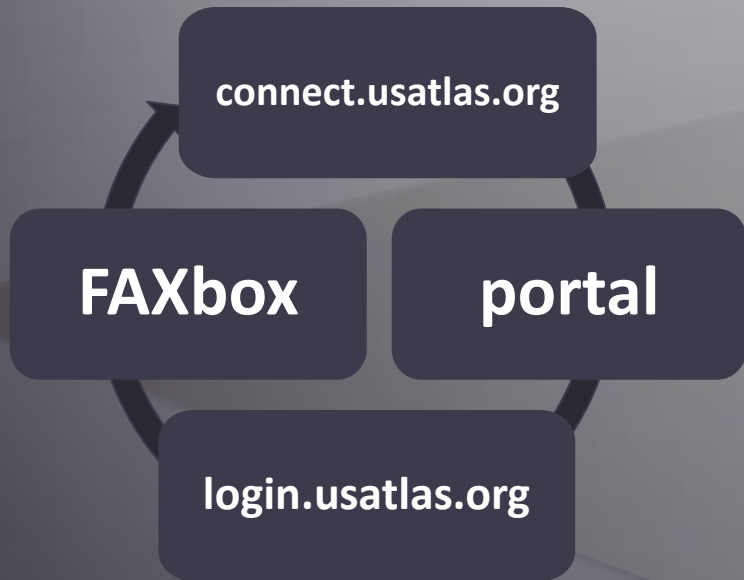
DC14 to help answer these questions

I. Vivarelli
ATLAS SW week
October 2013





CONNECT user



Community PROOF cluster

FUTURE

- UC3
UC RCC **NEW**
- NEW** MWT2, AGLT2, SWT2, Fresno
- Amazon cloud
- TACC **NEW**
Stampede

```

[rmg@login connect-quickstart]$ historygram rmg
Val          |Ct (Pct)  Histogram
rcc.uchicago.edu |6539 (65.39%) ██████████
mwt2.org         |2493 (24.93%) ██████████
csufresno.edu    |633 (6.33%) ████████
aglt2.org        |335 (3.35%) ████████
  
```

A 10k test 2/5/14
(this morning while writing this talk)

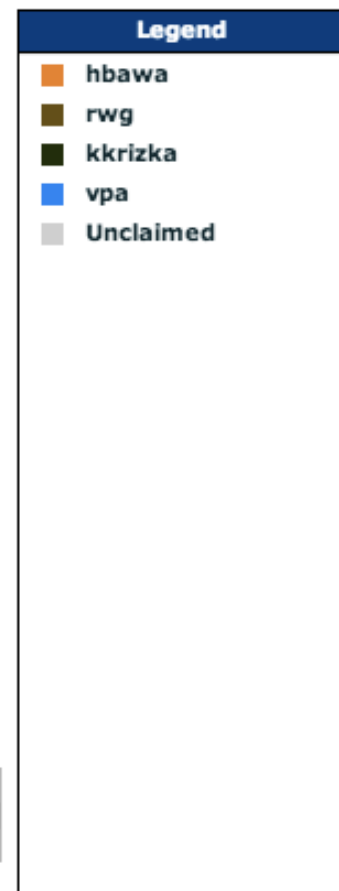
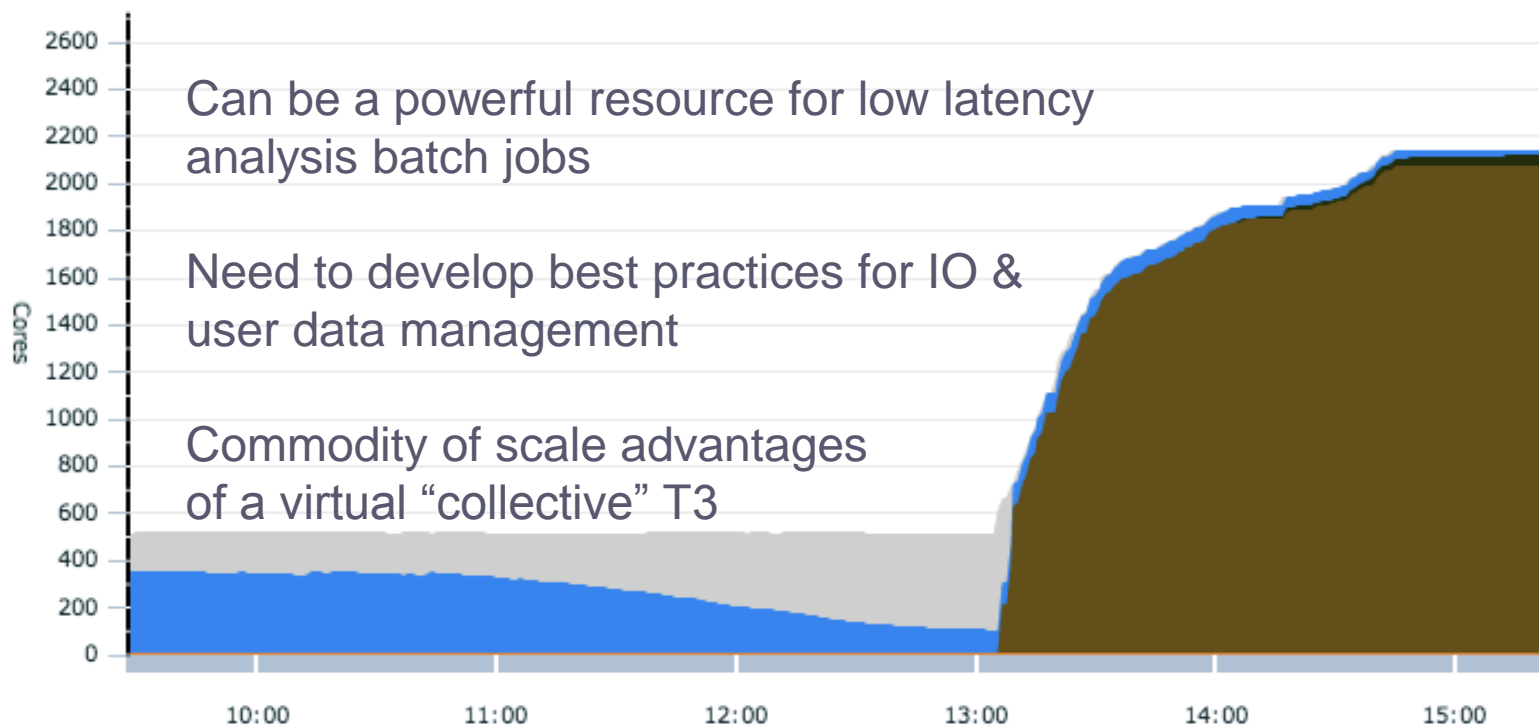
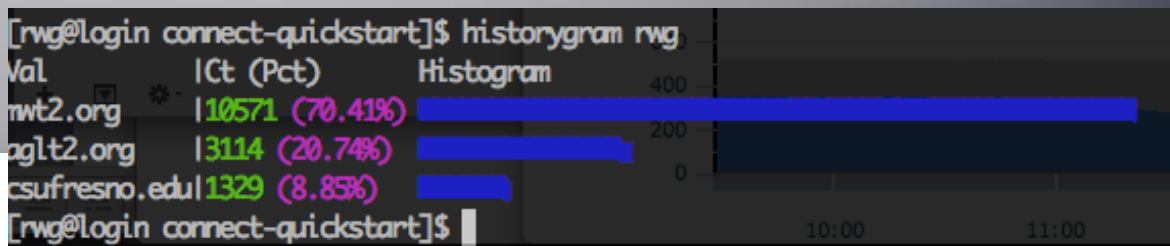


Trivial scaling test on ATLAS Connect

Submit 30k 10 minute jobs
(remove after plateau reached)

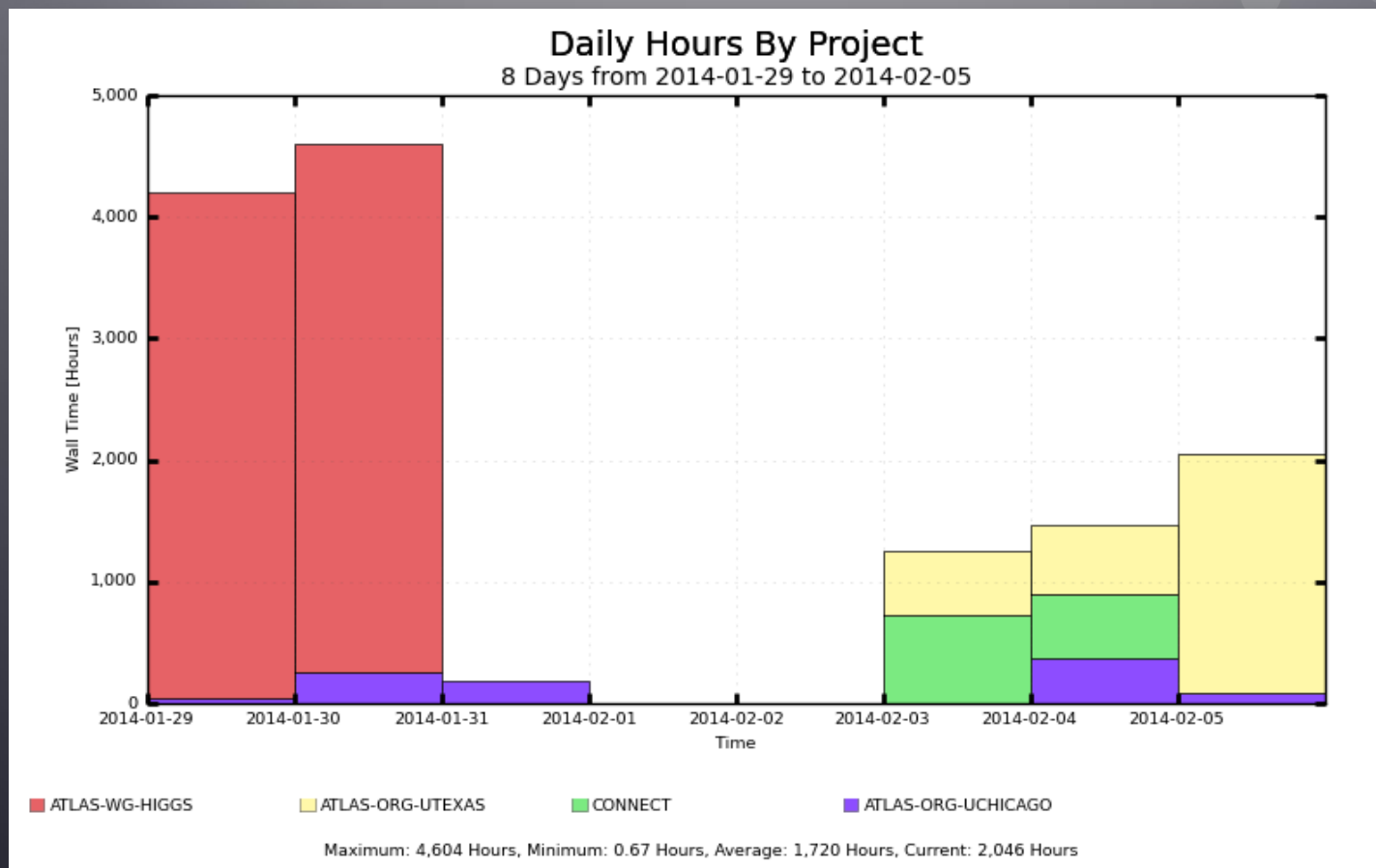
Show: Historical grid usage in all pools

Time Frame: 3 Hours | Day | Week | Month



Getting started

- Accounting: by institution or working group
- Encouraging early adopters to join & test & help develop user documentation



Federated Identity Campaign

- Working with InCommon (Jim Basney) to get all 44 US ATLAS institutions to provide ISP service (for CI Logon)

The screenshot shows the ATLAS Connect website at connect.usatlas.org. The page features the ATLAS logo and the word "CONNECT" in large blue letters. Navigation links for "Support", "Resources", "Connect", and "Sign In/Sign Up" are visible. The main heading is "Welcome to ATLAS Connect", followed by a paragraph: "ATLAS Connect is a set of computing services designed to augment existing tools and resources used by the US ATLAS physics community, focusing on batch-like analysis processing familiar to Tier3 users." Below this, the "ATLAS Connect User Service" section describes a single sign-on service. To the right, a diagram titled "CONNECT user" shows a flow from "connect.usatlas.org" through "FAXbox" and "portal" to "login.usatlas.org", which then connects to "PanDA", "Tier1, Tier2, Tier3", "Amazon cloud", and "Campus Grids". A "CONNECT cluster" diagram below it shows a connection to "Tier1".

ATLAS Connect User Service

A single sign-on service provides direct institutional and working group access to the US ATLAS Computing Facility, potentially using your campus network identity if your institution participates in the InCommon identity federation. A login host, login.usatlas.org, currently allows HTCondor job submission to: the Midwest Tier2 Center, the Tier3 center at Fresno State University, and the UChicago Computing Cooperative campus grid.

Quick, simple account provisioning

Ready for this summer's REU students

Also uses personal or campus Globus data service with same ID

Status

- ATLAS Connect User
 - UChicago RCC cluster added (64 slots). Negotiate for pre-emptible SLRUM queue
 - Bosco factory wrappers for Parrot access to CVMFS
 - Testing with ALRB and simple ROOT jobs
 - Early stages of TACC Stampede
 - Bosco factory setup
 - Test jobs complete
 - APF submit into TACC via Bosco is next step
 - Investigate adding NET2, WT2 (firewall issues)
- ATLAS Connect Cluster
 - Currently UC, IU, UIUC Tier3's overflow flocking
 - Adding UT Austin Tier 3 flocking



FAX into production

- With Rucio renaming complete for DE and US clouds its full steam ahead for functional and stress testing
- Continuous functional testing in HC on-going
- Dedicated stress testing
 - Friedrich: $H \rightarrow WW$ analysis using SMWZ on DE and US
 - Ilija: “deep read” use case with FDR datasets on US cloud (direct access infrastructure test)



Near Term Meetings Schedule

- Biweekly meetings: Feb 19, Mar 5, Mar 19, Apr 2
- WLCG LHCONe workshop at CERN
 - Feb 10-11, 2014 “Site concerns session”
 - <http://indico.cern.ch/conferenceDisplay.py?confId=289679>
- ATLAS S&C Week
 - Feb 24-28, 2014
 - <https://indico.cern.ch/conferenceDisplay.py?confId=276497>
- US ATLAS Facilities meeting at SLAC
 - April 7-11, 2014, co-located with OSG AH
 - <https://indico.fnal.gov/conferenceDisplay.py?confId=7207>
 - Agenda details TBD
- Federated data workshop
 - Also co-located with OSG AH (April 10,11)

