



**EDUSAFE PROJECT
MARIE CURIE ITN**

CBI

O. Beltramello

Who are we ?

A Collaboration of 12 Partners
EDUSAFE FP7 Marie Curie ITN Project

3.2 MEuros, 4 years program (started in Sept. 2012)

CERN / ATLAS is coordinator

10 PhD Fellows

2 Post Doc. Fellows

Athens University of Economics and Business, Greece

Canberra, France

CERN / ATLAS

EPFL, Switzerland

Novocaptis, Greece

IASA / National Technical University Athens, Greece

Prisma Electronics, Greece

Technical University of Munich, Germany

Universita Degli Studi Di Roma Tor Vergata, Italy

Aristotle University of Thessaloniki, Greece

CAEN University, France

Democritus University of Thrace, Greece



What are our goals ?

- Assist people working in extreme environment
We use CERN/ATLAS maintenance activities in radioactive environment first

We supervise workers, their environment and their activities:

- * audio / video connection
- * environment parameters
- * health data

We provide information to worker

- * various display: tablets, HMD
- * from various nature: working procedures
dose maps
- * using AR/VR technologies



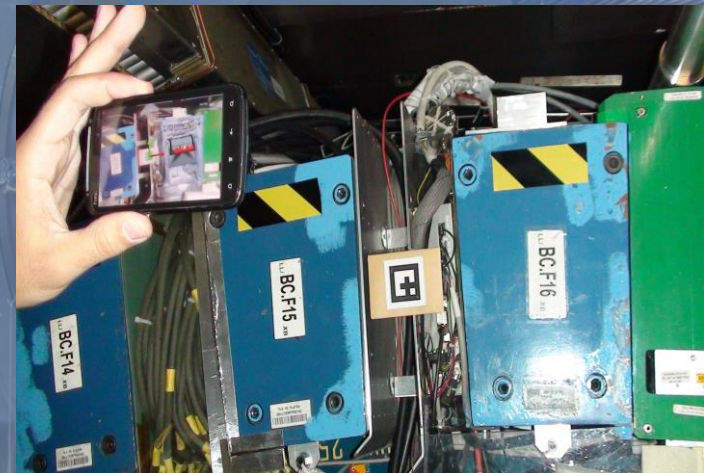
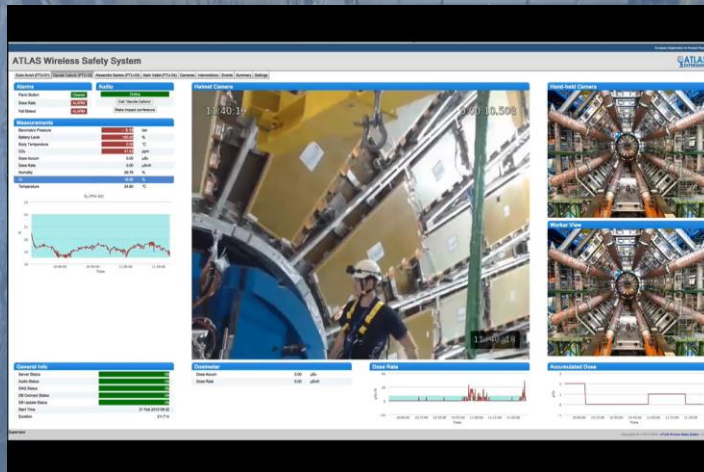
➔ increase safety levels

➔ reduce human errors

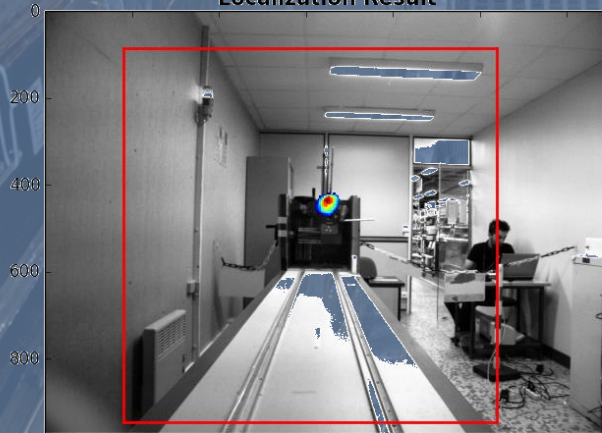
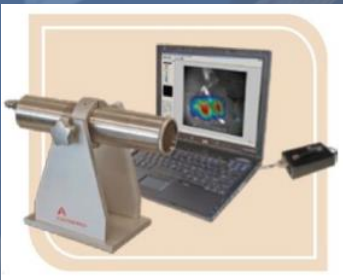
➔ decrease intervention time

➔ reduce intervention stress

- We have developed prototypes already in use for supervision
- We are developing the AR technology currently
- We will have our first testing campaign of the system in situ in Jan. 2015



Localization Result



Source	^{137}Cs
Dose Rate	$2.5 \mu\text{Sv/h}$
Total Time	1 sec



In parallel, we are looking how to **outreach** our project and our technologies

We have been very happy to **inspire the work of the CBI students** for their studies about autistic children

We, CERN, are exploring how our technologies could be used to assist people in various fields and especially in this field of Autism disorders.