



Enabling Grids for E-science

User Community Support & Expansion (NA4)

C. Loomis (LAL/CNRS)

V. Floros (GRNET)

Transition Meeting (CERN)

6-7 May 2008

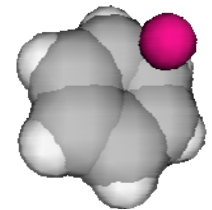
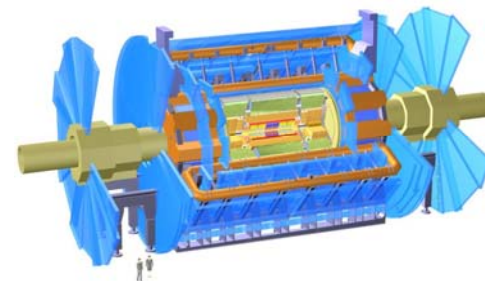
www.eu-egee.org



- **Activity Goals**
- **Evolution**
- **Organization**
- **Reporting**
- **Work Plans**
 - Support
 - Strategic Clusters
 - Coordination
- **Questions**

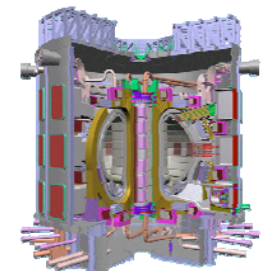
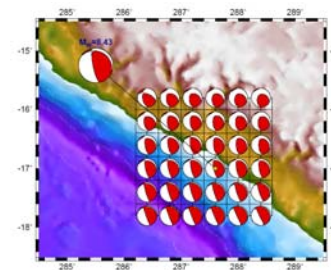
- **User Community Support & Expansion**

- Ensure that Grid technology and the EGEE infrastructure are used successfully by a broad spectrum of scientific collaborations.

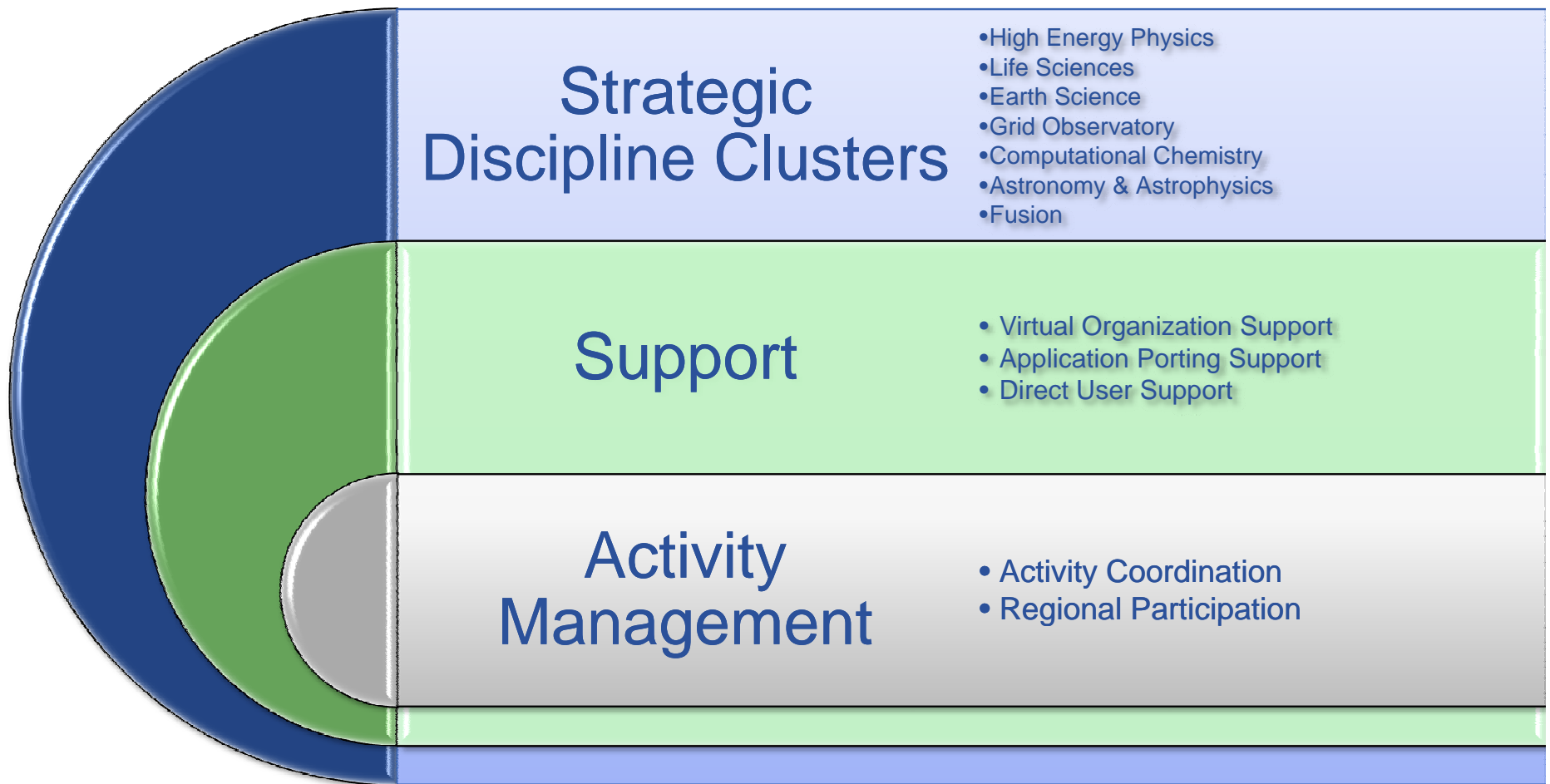


- **Build on previous success:**

- General user and virtual organization support.
- Work directly with strategic disciplines.
- Build new and strengthen existing user communities.



- **Organization and tasks similar to EGEE-II, but...**
 - Direct User Support team added.
 - GILDA moves to NA3; App. Porting Support team added.
- **There *is* a shifting emphasis:**
 - European DataGrid: R&D; few adventurous applications
 - EGEE: Core application areas; few additional areas
 - EGEE-II: Emphasis on app. clusters; some support services
 - EGEE-III: Balance between support services and scientific cluster activities
 - Introduction of new support teams
 - Clear and well-defined organization of clusters
- **Evolution towards EGI:**
 - Move to “service-oriented” activity must happen for EGI.
 - NA4 services are similar to those EGI will have to provide.



- **NA4 Steering Committee = all workgroup coordinators**

Workgroup	Task	Coordinator	Deputy
VO Support	TNA4.1.1	Frederic Schaer	
App. Porting Support	TNA4.1.2	Gergely Sipos	
Direct User Support	TNA4.1.3	Christos Filippidis	Christos Markou
High Energy Physics	TNA4.2.1	Patricia Mendez	
Life Sciences	TNA4.2.2	Vincent Breton	Christophe Blanchet Johan Montagnat
Earth Sciences	TNA4.2.3	Horst Schwichtenberg	Monique Petitdidier
Grid Observatory	TNA4.2.4	Cécile Germain	
Comp. Chemistry	TNA4.2.5	Mariusz Sterzel	
Astron. & Astro.	TNA4.2.6	Claudio Vuerli	Fabio Pasian
Fusion	TNA4.2.7	Paco Castéjon	
Management	TNA4.3.1-2	Charles Loomis	Vangelis Floros

- **To follow progress, reporting will follow two lines:**
 - Work done for a workgroup will be reported to and summarized by the workgroup coordinator. The summary will include a statement on whether each partner is contributing positively and at the appropriate level.
 - General information about the uptake, use, recurrent issues, and needs will be collected by the regional coordinators and forwarded to the activity manager and deputy.
- **Effort:**
 - Activity participants must register with NA4 mgt. *before* doing any work for NA4. Adding people to PPT is *not* sufficient. (email: halter {at} lal.in2p3.fr).
 - All NA4 effort must be associated to a workgroup and done in accordance with the work plan.

- **All workgroups will have a well-defined work plan.**
- **Definition:**
 - Done by workgroup coordinator in consultation with participants.
 - Approved by NA4 Steering Committee.
 - Cluster development programs also approved by TMG.
- **Schedule:**
 - Initial definition done email and/or phone meetings in May.
 - Finalization and intensive *workshop*:

All Hands Meeting on 9-10 June, Orsay, France

<http://indico.cern.ch/conferenceDisplay.py?confId=32345>

	Date (PM)	Contents
DNA4.1	1	Cluster Work Plans
DNA4.2	2	Policies and Procedures
DNA4.3	11	Cluster Progress/Updated Work Plans
DNA4.4.1-2	11, 23	Usage of Support & Infrastructure
DNA4.5	23	Cluster Progress
MNA4.1.1-2	10, 22	User Forums
MNA4.2.1-2	10, 22	Demos for each Cluster

- **VO Support**
- **Application Porting Support**
- **Direct User Support**

- **Expanded to small team to provide VO support.**
- **Responsibilities:**
 - Counsel VOs regarding procedures and available tools.
 - Help with administrative procedures.
 - Provide documentation specific to VOs.
 - Support new and existing VOs.
 - Ensure effective VO management tools exist.
 - Get VO managers together to discuss needs/problems.
- **Participants (70 PM):**
 - *CEA*, CNRS, GRNET, UNIMELB

- **Focus: Porting apps to production infrastructure.**
- **Responsibilities:**
 - Providing expert advise on porting a VO's applications to the grid.
 - Self-training of the support team to keep abreast of new developments in the gLite middleware and in third-party packages in the RESPECT program.
 - Maintaining documentation related to application porting in coordination with the direct user support team.
 - Remote support (email, phone, etc.) for those users that cannot travel to the application porting support centre.
- **Participants (261 PM):**
 - *MTA SZTAKI*, CEA, INFN, CSIC, UCM, ASGC, UNIMELB

- **New team; fills identified gap in previous projects.**
- **Responsibilities:**
 - Provide support through GGUS for basic user problems.
 - Route tickets through GGUS system that cannot be handled directly.
 - Identify recurrent problems and suggest ways to remedy them.
 - Maintain overview of available documentation.
 - Write high-level documentation for typical use cases.
 - Submit bug reports for incomplete or inaccurate documentation.
- **Participants (232 PM):**
 - ULB, CNRS, INFN, SIGMA, *GRNET*, TAU, CSIC, UPV, ASGC, CNU, UNIMELB

- **General work plan for clusters covers:**
 - Specific Support
 - Development/Evaluation of Software
 - Evolution of gLite and Intensive Testing
- **Astronomy & Astrophysics**
- **Computational Chemistry**
- **Earth Sciences**
- **Fusion**
- **Grid Observatory**
- **High Energy Physics**
- **Life Sciences**

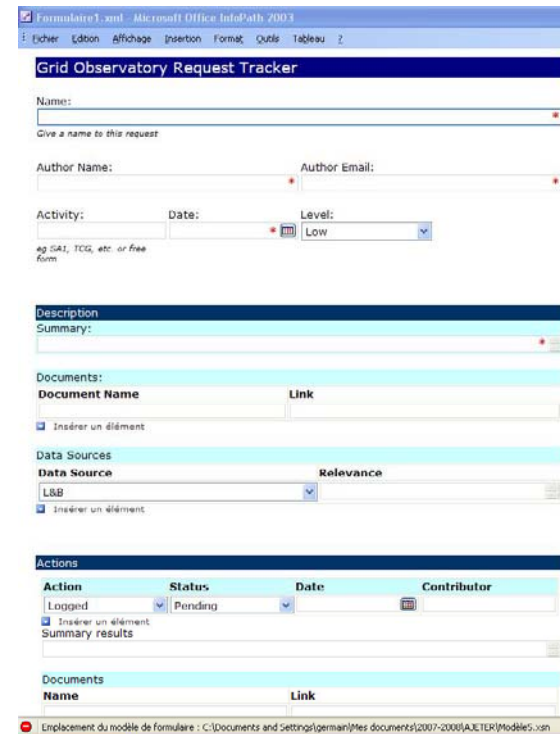
- **Establish and consolidate a well motivated astronomical community that uses grid technology.**
 - Offering a rich variety of hardware/software resources.
 - Grid databases, complex workflows, parallelization, software, ...
 - More hardware resources
 - Opening new opportunities to foster and strengthen scientific collaborations.
 - Demonstrate that the grid is more useful when different grid infrastructures interoperate and different VOs support each other.
 - Enhance and stabilize the presence of the astrophysical community in EGEE.
- **Participants (72 PM):**
 - RUG, II SAS, *INAF*, CSIC, IFAE, ASGC

- **Provide stable, reliable, and easy to use web portal oriented to chemists**
- **Further extend application portfolio**
 - parallel version of software packages which are ported already
 - new software packages
 - better software integration
- **Develop workable grid license models**
- **Integrate the chemical community and start/extend cooperation with other communities**
- **Participants (78 PM):**
 - CESNET, UIBK, *CYFRONET*, UNIPG, VR-SNIC

- **Providing and supporting core, earth science functionality:**
 - Workflow, data formats, geographical information systems, ...
- **Direct ES user and application support**
- **Provide web service interfaces for ES services:**
 - OpenGIS as defined by OGC
 - OPeNDAP: standard for remote data access remote data
 - Data access and integration
- **Participants (84 PM):**
 - II SAS, *FhG*, CNRS, CGGV, GC RAS, ASGC

- **Three areas for work in fusion cluster. All of the partners contribute to all areas.**
 - Application selection and porting.
 - Data management for fusion.
 - Workflow orchestration.
- **Tight collaboration with the EUFORIA project.**
- **Participants (66 PM):**
 - RRC KI, *CIEMAT*, UNIZAR

- Integrate the collection of data on the behavior of the EGEE grid and users with the development of models and of an ontology for the domain knowledge.
 - Data Portal: public access to traces of EGEE activity
 - Analysis: propose realistic methods to answer real operational issues
- Catalyst for interaction with computer science community.
- Participants (48 PM):
 - **CNRS**, UNIPMN, Imperial, ASGC



The screenshot shows a web browser window titled 'Formulaire1.xml - Microsoft Office InfoPath 2003'. The page is titled 'Grid Observatory Request Tracker' and contains several form sections:

- Name:** A text input field with a placeholder 'Give a name to this request'.
- Author Name:** and **Author Email:** Text input fields.
- Activity:** A dropdown menu.
- Date:** A date input field.
- Level:** A dropdown menu with 'Low' selected.
- Description:** A section with a 'Summary:' text input field.
- Documents:** A table with columns 'Document Name' and 'Link'. Below it is a button 'Insérer un élément'.
- Data Sources:** A section with a 'Data Source' dropdown menu (set to 'LBB') and a 'Relevance' dropdown menu. Below it is a button 'Insérer un élément'.
- Actions:** A table with columns 'Action', 'Status', 'Date', and 'Contributor'. The first row shows 'Logged', 'Pending', and an empty date/contributor field. Below it is a button 'Insérer un élément'.
- Documents:** A second table with columns 'Name' and 'Link'. Below it is a button 'Insérer un élément'.

At the bottom of the browser window, the file path is visible: 'C:\Documents and Settings\german\My Documents\2007-2008\AJETER\Modeles.xml'.

- **HEP experiment support and integration**
- **Middleware testing: Performance and scalability**
- **Continuing gridification projects arriving at CERN**
- **Monitoring**
 - SAM, Dashboard, and Gridmap
- **Analysis tools and middleware development**
 - CRAB, Ganga, Diane, and AMGA
- **Participants (234 PM):**
 - *CERN*, INFN, ASGC, UNIMELB

- Provide support for selected services of particular interest to the biomed community: AMGA, MOTEUR
- Prepare the migration to EGI in the life sciences sector
- Application porting in the fields of medical imaging, bioinformatics and drug discovery
- **Participants (264 PM):**
 - **CNRS**, CNR-ITB, UPV, ASGC, KISTI, CNU

- **Coordination**
- **Regional Participation**

- **General coordination:**
 - Deliverables, milestones, quarterly reports, etc.
 - Following work & milestones from MoUs involving NA4.
 - Tools management (web, wikis, svn, ...).
- **Community building:**
 - User Forums
 - Topical meetings
 - Discipline meetings
- **Participation (92 PM):**
 - CERN, *CNRS*, GRNET, CNU

- **Funding for the smaller/new user communities:**
 - Bringing Communities Together (35,000€)
 - Funding for the UF invited speaker expenses
 - Organize disciplinary meetings
 - Coordinating Community Effort (30,000€)
 - Appoint coordinators for major and strategic disciplines.
 - Organize appropriate sessions in EGEE events.
 - Disciplinary meetings and workshops
 - Community Bootstrapping (15,000€)
 - Help members of new communities to travel to application porting team.

- **Handled by NA4 Deputy in consultation with NA4 SC.**

- **Complement to support teams:**
 - Two-way communication between region and NA4.
 - Some direct support, if possible.
- **Regional documentation:**
 - Maintain web “site” as signpost.
 - Includes regional support contacts.
- **Administrative**
 - Interactions with NGI.
 - Report on use, issues, needs etc. from region.
- **Participation (262 PM).**

Region	Partners
Asia	ASGC, CNU
Benelux	SARA
Central Europe	CESNET, JSI
CERN/DE/CH	DKRZ
FR/UK/Ireland	Glasgow, STFC
IT	INFN
Northern Europe	VR-SNIC, SIGMA
Russia	SINP MSU
Southeast Europe	GRNET, UCY
Southwest Europe	UCM

- **Looking forward to working with our partners to improve the user experience on EGEE and to expand the breadth of the user community.**
- **Questions?**