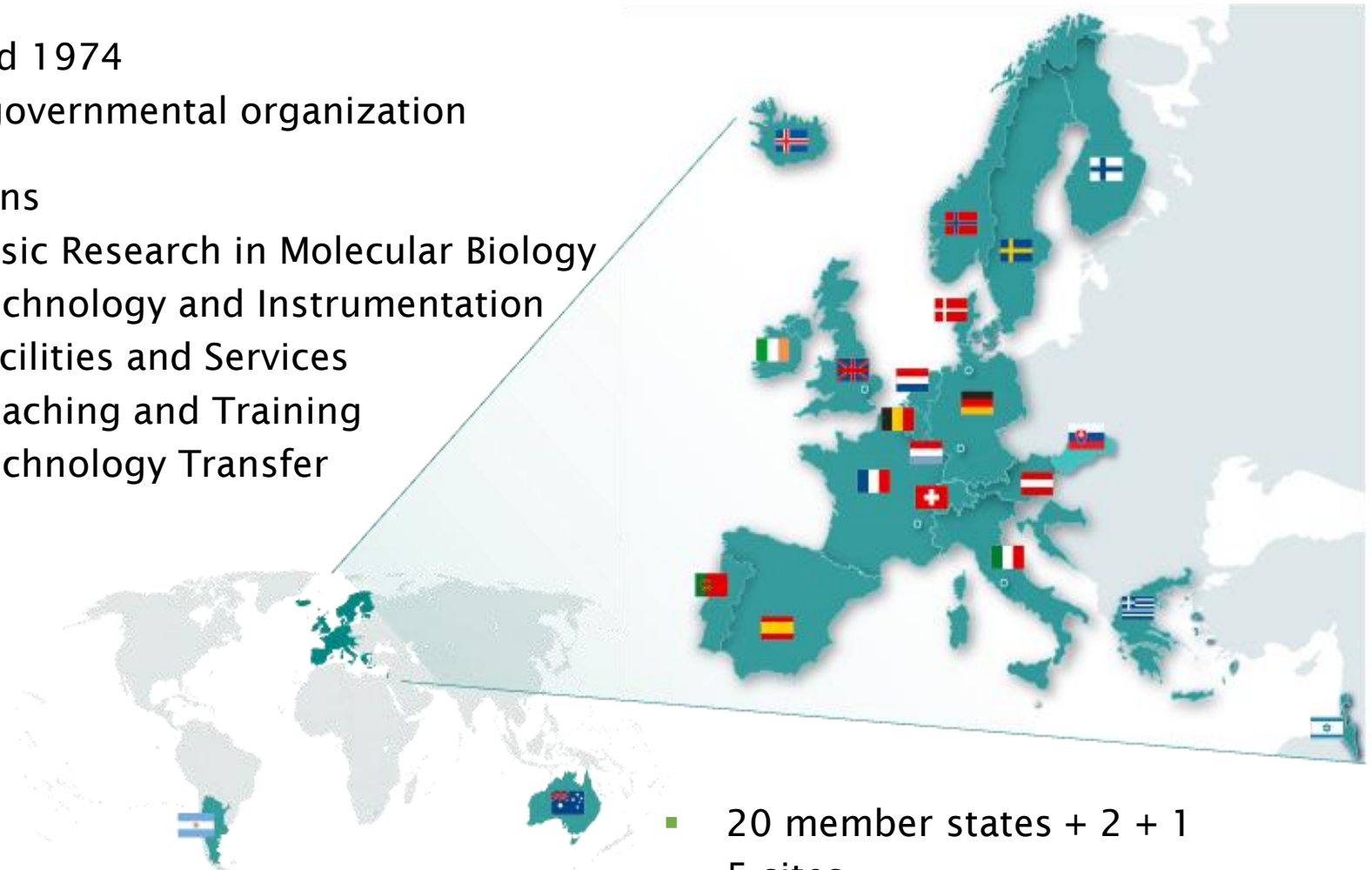
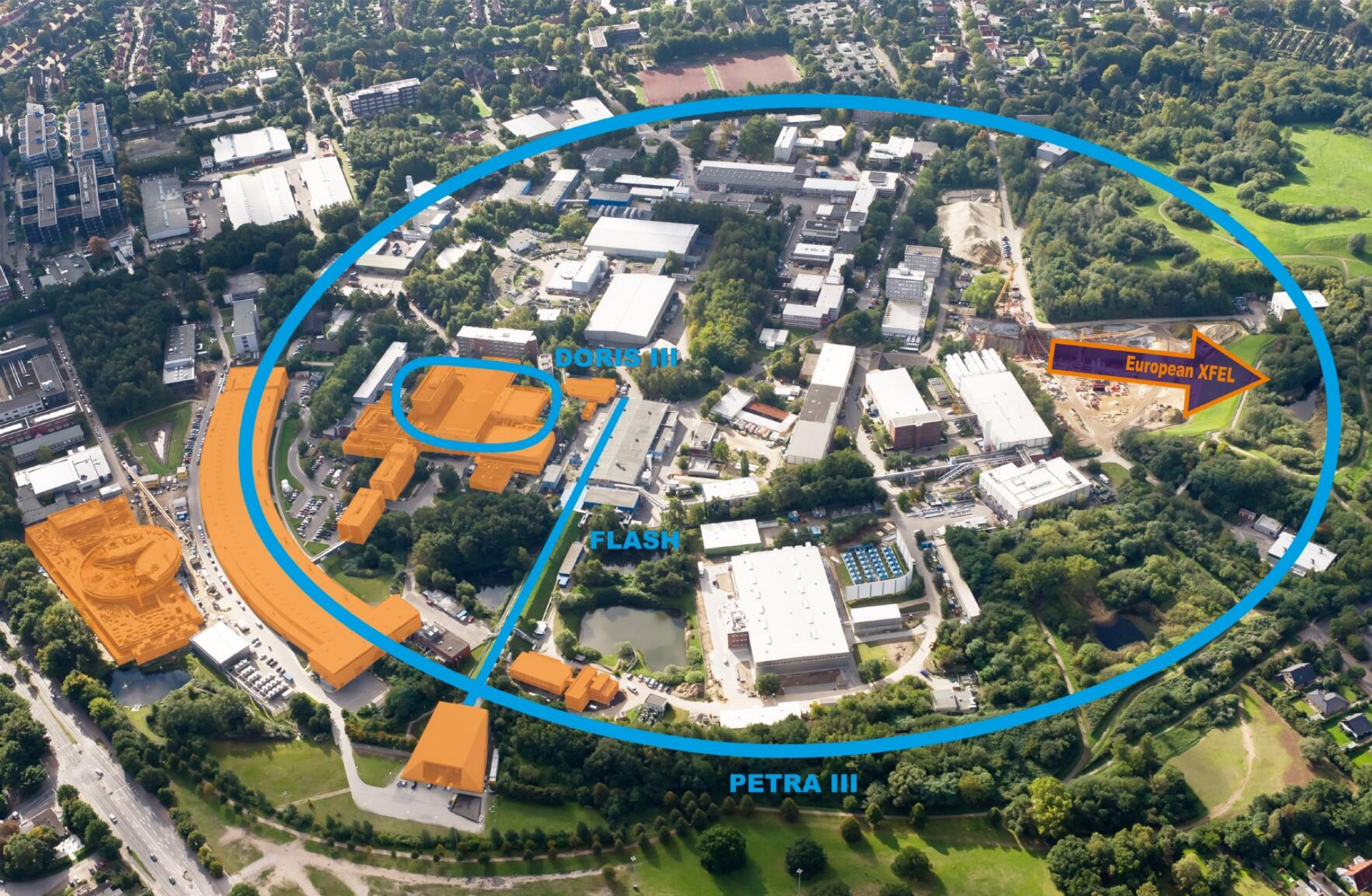


European Molecular Biology Laboratory

- Funded 1974
- Inter-governmental organization
- Missions
 - Basic Research in Molecular Biology
 - Technology and Instrumentation
 - Facilities and Services
 - Teaching and Training
 - Technology Transfer

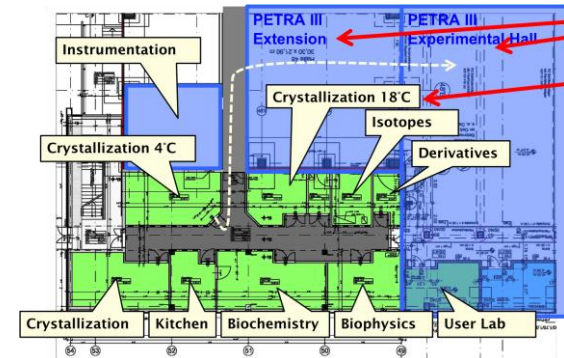
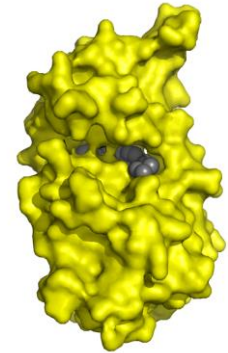
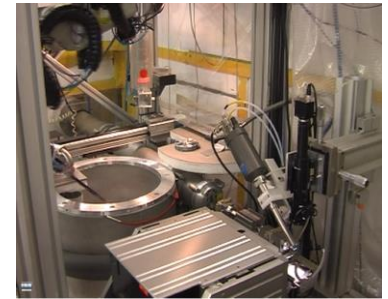
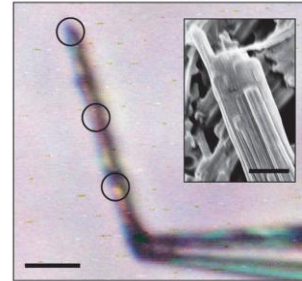


- 20 member states + 2 + 1
- 5 sites
- 1800 employees from >80 nations
- Annual Budget ca. 150 + 60 M€



Technologies/Services enabling Science

- Core Facilities
- Instrumentation for synchrotron radiation
- Nano-Positioning
- Liquid handling
- Automation
- Sample Characterization and Preparation
- Data Evaluation
- **Integrated User Facilities for the non-specialists**
- Several 100 user groups per year visiting the beam lines



EMBL - typical projects

- 100 k€ to 15 M€
- 6 months to 5 years
- No 'prescribed' project management model
- Collaboration with similar sites is absolutely crucial (critical mass)
- Advisory boards (1 / y)
- Review boards (1 / 4y)
- 5 year plans
- <10% of staff on rolling tenure, others have to leave after 9y
- Many projects receive financing on short notice (ext & int grants)