

South East Europe ROC

Ognjen Prnjat <oprnjat at grnet.gr>

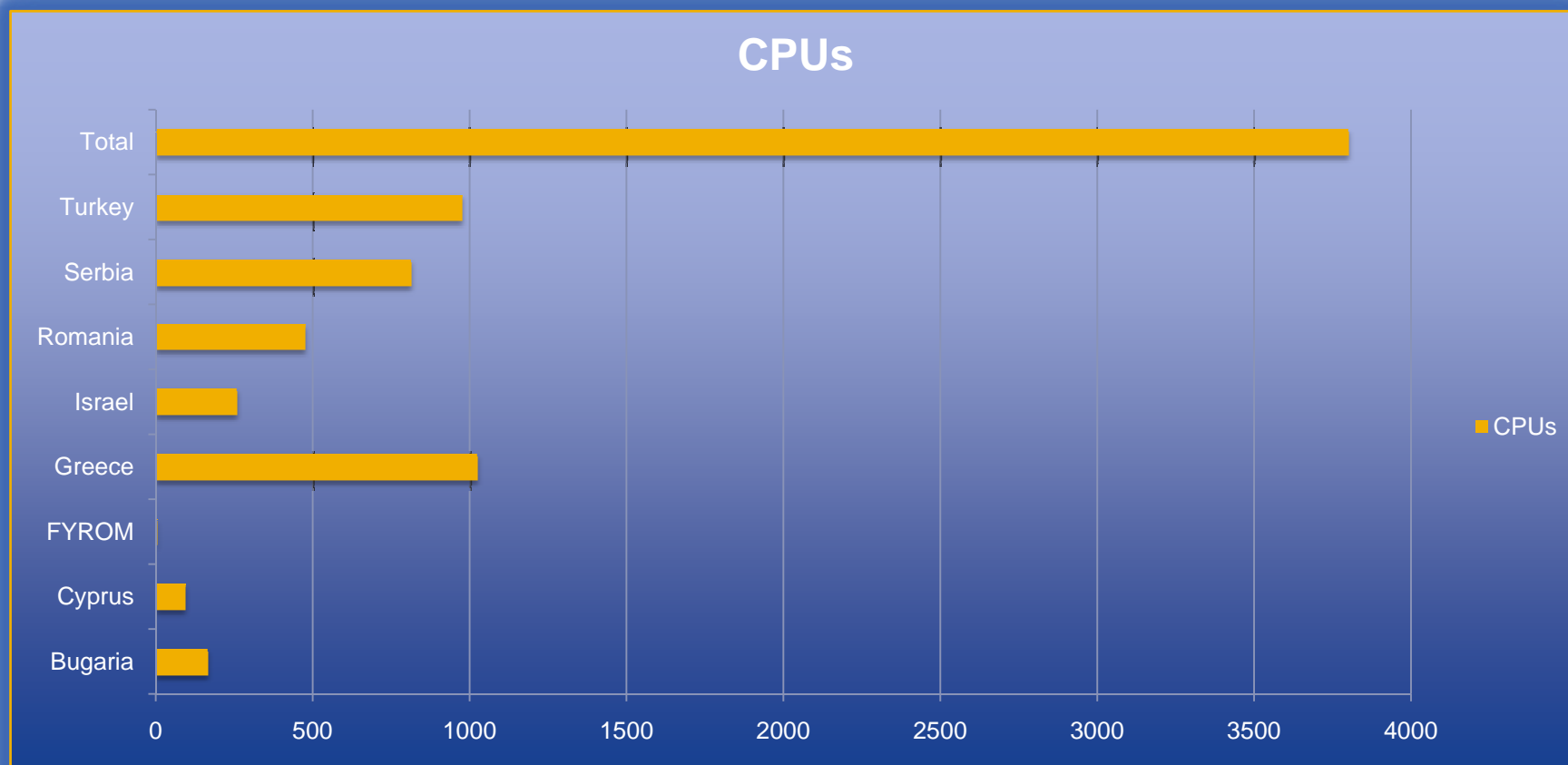
Kostas Koumantaros <kkoum at grnet.gr>

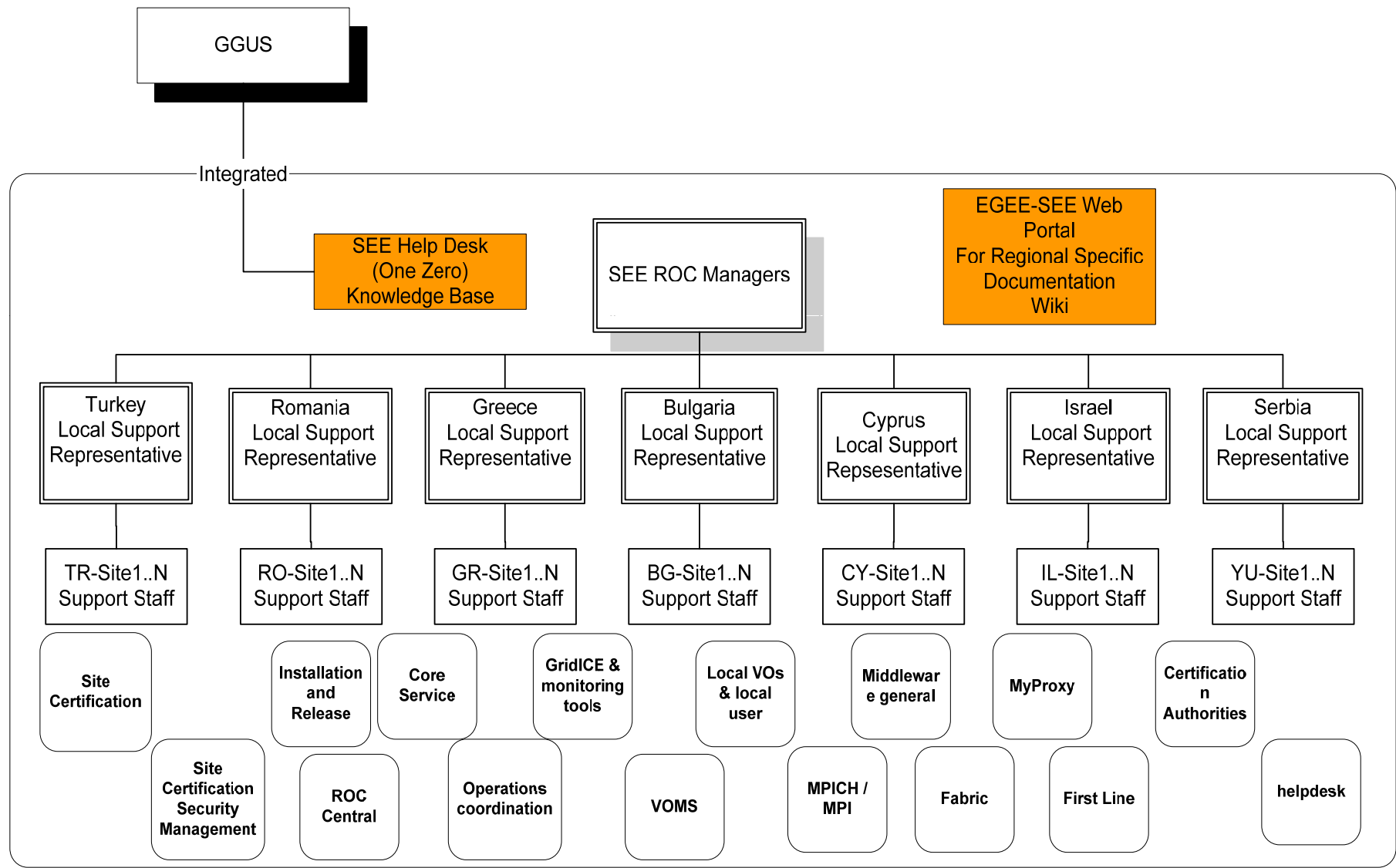
Ioannis Liabotis <iliaboti at grnet.gr>

- ROC operational model in next few slides
- High complexity and distribution of management

- **SEE ROC Management**
 - Ognjen Prnjat <oprnjat at grnet.gr >
 - Kostas Koumantaros <kkoum at grnet.gr>
 - Ioannis Liabotis <iliaboti at grnet.gr>
- **Local SEE ROC Representatives**
 - Bulgaria: Emanouil Atanassov <emanouil at parallel.bas.bg>
 - Cyprus: Nikolas Stylianides <nstyl@cs.ucy.ac.cy>
 - Greece: Kostas Koumantaros <kkoum at grnet.gr>
 - Israel: Edward Aronovich <eddiea at cs.tau.ac.il>
 - Romania: Alexandru Stanciu, <alex at ici.ro>
 - Serbia: Antun Balaz <antun at phy.bg.ac.yu>
 - Turkey: Asli Zengin <asli at ulakbim.gov.tr>

- **Number of Countries: 7 + 1**
- **Number of Sites: 40**
- **Number of CPUs: 3797**





SEE ROC Institutions and Main Responsibilities

- **GRNET**
 - ROC Management
 - Local Support Greece
 - Site certification
 - Monitoring (GridIce, SFTs, smokeping, Maui fairshare), Accounting: regional + per country stats produced
 - Security: policy
 - 2 pre-production sites
- **ICI**
 - Local Support Romania
 - Regional HelpDesk
 - Regional TPM lead, regional organization
 - ESC participation
- **IPP**
 - Local Support Bulgaria
 - Operator On Duty Support
 - Participation in the interoperability working group
 - Regional Grid Security – OSCT, GSVG
- **TAU**
 - Local Support for Israel
 - Regional Grid Security contact: OSCT
 - Regional core services
 - Strong ATLAS support
- **UCY**
 - Local Support for Cyprus
 - Core Services
 - VO Support
- **TUBITAK**
 - Local Support for Turkey
 - Local HPC interoperation
- **IPB**
 - Local Support for Serbia
 - Core services
 - Regional VO Support
 - Cooperation with SEGRID-SCI

- **Current operational model good foundation for the future one**
- **Hierarchical scalable management of large distributed ROC to be developed further**
 - Geographical dimension
 - First step towards a NGI operational model: Very NGI based
 - Division of duties in functional manner with failover teams

Main goals and challenges

- To continue operations with this limited effort
- Available EGEE3 effort lower than needed! (7 countries)
- Number of sites and countries increasing – must maintain same level of effort+
- To successfully migrate to NGI model.
- Move towards more country independence

- **Backup slides: per partner responsibilities in detail.**

- **ROC Management**
- **SLA- inputs to formulation. Coordination of SLA establishment and monitoring in the region. SLA management in Greece.**
- **Regional monitoring**
- **Interoperability and collaboration: SEEGRID**
- **CA operations**
- **Grid operations and support: Greece. Coordination and oversight for the region.**
- **2 pre-production sites**
- **Production services**
- **Local and regional user support**
- **Grid security – Policy bodies**

IPP-BAS Responsibilities in SA1

- **TSA1.1: Grid Management (12 PM)**
 - Overall coordination of national grid sites
 - Participation in the interoperability working group
 - Operation of BG.ACAD|CA and RA
- **TSA1.2: Grid operations and support (28 PM)**
 - Oversight of Grid operational, detect and solve the problems
 - Participation of COD on duty shift
 - 1st line support for operational problems
 - Middleware deployment and support of 5 bg sites with more than 300 WNs
- **TSA1.3: Support to VOs, Users, Applications (12 PM)**
 - Providing TPM shift support and user support
 - SA1 participation in site and user training
- **TSA1.4: Grid Security (8 PM)**
 - Participation in the security responsible team for coordination of operational security:
 - Provide feedback in OSCT about security vulnerability and security monitoring tools

Activity	Effort	Description of Work
TSA1.1	5	Operation of national Certification Authority (CyGridCA) and Registration Authorities (HPCL-RA for CY-01-KIMON and INTER-RA for CY-03-INTERCOLLEGE); this includes issuing user and host certificates, issuing Certificate Revocation Lists, auditing the CA and RAs, providing training to RA managers by CA personnel, and participation to EUGridPMA meetings (trip and preparation included).
TSA1.2	21	Operation of the CyGrid infrastructure: running the production level core services, performing required updates, managing security. Operational 1st line support for the CyGrid infrastructure, including managing and responding to problems reported by users or discovered by site administrators, troubleshooting hardware and software of production site service nodes (CE, DPM, UI), and for VO-specific service nodes (RB, BDII, WMSLB for the South East Europe VO or other VOs). The following VOs are supported ATLAS, ALICE, BIOMED, CMS, SEE, GECLIPSE, DTEAM, OPS , DTEAM, OPS and SEE.
TSA1.3	18	Support to users for porting and running their applications to the grid: support provided through face-to-face meetings, regional helpdesk tickets, e-mails, or by phone. Operating a mailing list for CyGrid users where questions are answered by SA1 personnel, and general postings are made for aiding users. Data challenges support (in particular for Biomed as it was always supported in the past) with an extra allocation of CPUs and DPM storage space. Participation of SA1 personnel in training activities for site managers, administrators and security officers, and in training activities for grid local users (in coordination with NA3)
TSA1.5	3	General administrative tasks, including: SA1 meetings, timesheets, weekly reports on operational status of sites through CIC portal, and quarterly reports sent to ROC.

- **Contribution to ROC Management**
- **Monitoring and enforcement of Service Level Agreements**
- **Interoperability and collaboration**
- **Oversight and management of Grid operations**
- **Regional Helpdesk**
- **Run Grid services for production and pre-production services**

Main focus : NGI based on EGEE infrastructure

- **Run services for regional & local users and operation**
 - Act as for regional operations services
- **Massive support for production Atlas deployment**
- **Forced to reduce the team, and dedicate it to infrastructure only**
- **No efforts allocated for “user support”**
- **Adjust operation to NGI co-operation model**

IPB responsibilities in SA1

- Representation in the distributed SEE ROC
- Contributions to SLA monitoring and enforcement
- Contributions to Grid accounting coordination in the region
- Contributions to interoperability within the region
- Oversight and management of Grid operations
- Local coordination of middleware deployment
- Regional support for middleware deployment
- Support for operational problems to sites in SEE ROC
- Running core services (top-level BDII, WMS+LB, MyProxy) used by regional ATLAS, CMS and SEE VO users
- Support to EGEE VOs local users (including support in obtaining certificates and providing instructions/orientation for new users, reporting of problems through GGUS/SEE Helpdesk)
- Local support to EGEE VOs (ATLAS, CMS, SEE) in solving operations issues, in VO software deployment and customizations

- TSA1.1: Grid Management - 6
 - 7. Operation of national or regional CA and RA – 6
 - *Activities of TR-Grid CA/RA which has over 200 users will be coordinated under this task.*
- TSA1.2: Grid operations and support - 42
 - 3. 1st line support for operations problems – 22
 - *Operational problems will be solved under this task. Also operational tickets will be answered by this effort.*
 - 5. Middleware deployment and support
 - a. Coordination of middleware deployment and support for problems - 16
 - *Deployment of grid middleware and related support will be carried out under this task.*
 - 6. Interoperations – local, regional, international – 2
 - *TR-Grid has been expanding with HPC clusters at partner sites and TR-Grid HPC infrastructure will be using batch and broker services from other parties. Minor effort is dedicated for interoperation of these new sites under EGEE infrastructure.*
 - 8. Operations requirement collection and follow up: SA1 site representatives – 2
- TSA1.3: Support to VOs, Users, Applications - 18
 - 2. TPM and user support effort – 15
 - *Regional/national user support will be carried under this task. Currently TR-Grid infrastructure has 280 registered users. Nearly 60 of these are from HEP community.*
 - 4. SA1 participation in site and user training – 3
 - *In EGEE-II all of the operational personnel co-worked in SA1 and NA3. In EGEE-III national SA1 personnel will mainly concentrate on SA1 tasks and participate trainings as part of their SA1 duty.*