

# Replication Service Evolution

# Outline

- WWHWW



# What we would like to change?

- Streams => GoldenGate12c
  - Conditions data between **online-offline**
  - Conditions data between **offline-T1s**
  - ...
- **DataGuard** services stay unchanged

# Why to change now?

- LS1 is a good occasion to introduce changes
- **Streams** are in maintenance mode
  - still supported
  - **no enhancements** and no new database features will be adopted
- Lets follow new trends and Oracle recommendations
- Expertise in GoldenGate opens new possibilities
  - **zero-downtime** migrations/upgrades
  - enables **data integration** with other non-Oracle database

# Are our workloads ready for GoldenGate?

- (Native) DDL replication ( $\geq 11.2.0.4$ )
  - Table creation, granting of user privileges
- **Data filtering** on schema and table name level
- Remote **configuration** and **management** of replication processes
- Proactive and reactive **monitoring**
  - (See Lorena's and Maciej presentation tomorrow)
- DDL handler at target database
  - Not really needed for conditions data
  - Will be available at the end of this year



WORK IN PROGRESS

# Are we ready for GoldenGate

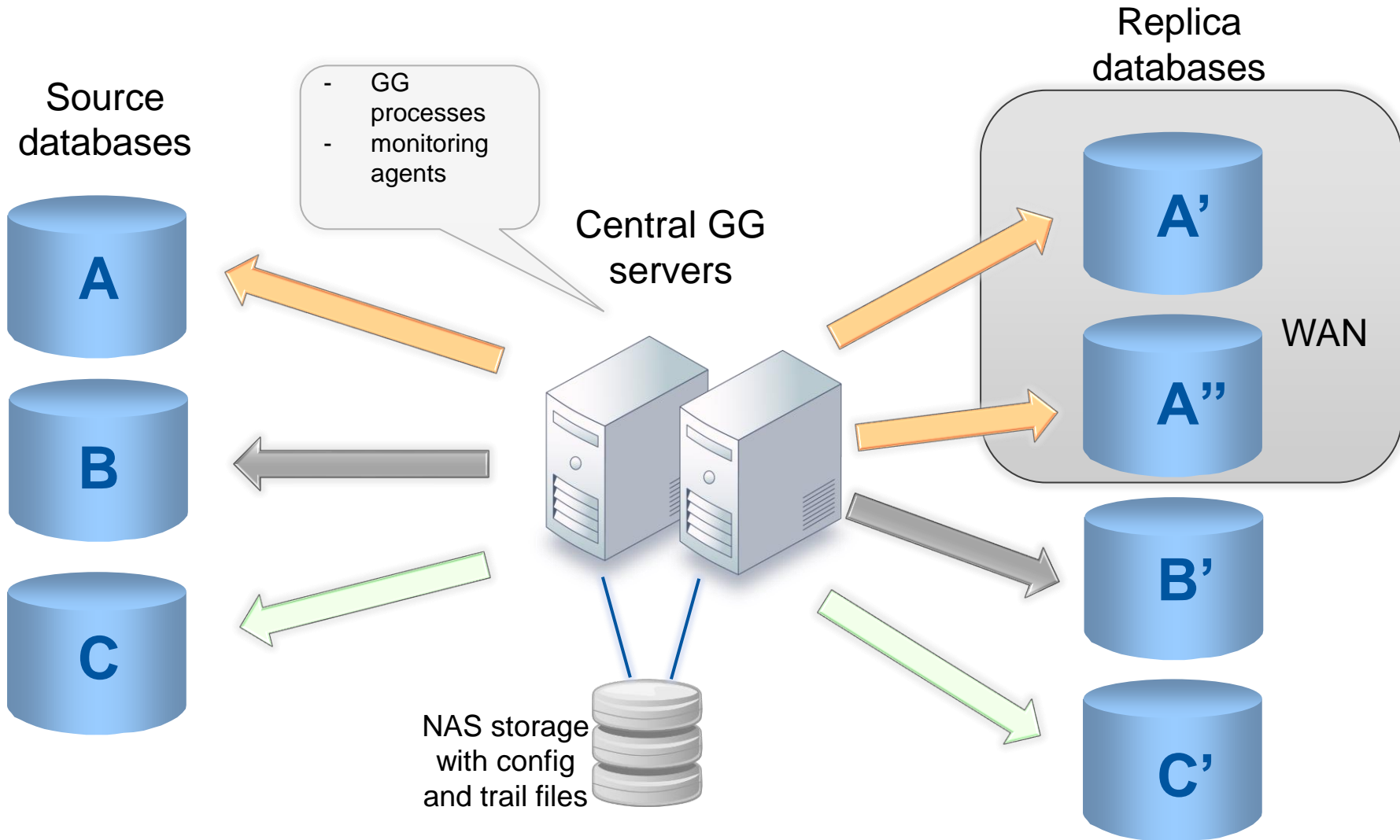
- Functional test
- Performance test
- Long distance tests (with T1s)
- Long term stability tests
- Tests with production data (ATLASCond)
- Optimize networking parameters
- Long term test with production data
  - Local and long distance



# How?

- **Central GoldenGate installation**
  - All GoldenGate software installed on a **two-node cluster**
    - Processes operate on databases **remotely**
    - All binaries & configuration stored on NAS volumes
    - All monitoring agents installed on the cluster
    - Cluster in **master-slave** configuration
      - With automatic failover

# Central GoldenGate installation





# Central GoldenGate installation

- Easier **deployment and management**
  - Everything in one place => easy hardware migration
  - Installation of GG software on each db server is not needed
  - Additional integration with RAC is not need (except central service)
  - No need of running datapump process (from GG stack)
  - Single trail files (local) copy =>less storage needed
- Improved **security**
  - No need of additional port opening on replica sites
- Simplified deployment of GG **monitoring**
  - enables using of Oracle EM plugin to monitor entire environment
- Better **performance** over WAN (T0->T1s) measured

# How on the D-Day?

- 0) **Configure** GoldenGate processes
- 1) **Start** GoldenGate extraction processes
- 2) **Stop** Streams processes
- 3) **Start** GoldenGate replicat process
- \*) **Keep** Streams configuration switched off
  
- Impact: less than 1 hour of downtime

# Who does what?

- Experiment
  - Gives a green light
  - Support the testing (if possible)
- T0
  - Central installation of GG cluster
  - Central installation of monitoring
  - Deploy of initial configuration
  - Long term: administration of online-offline replication
  - Long term: co-administration of online-T1s replication
- T1s
  - Continue long distance tests
  - Upgrade to 11.2.0.4 (almost done)
  - Re-instantiation of data (if needed)
  - Update firewall port configuration
  - Register on GG monitoring tool
  - Long term: co-administer of offline-T1s replication

# When to change? (proposal)

1. Long term tests with production data (T0->T1s) **June**
2. ATONR & ATLR compatibility update **max: 1<sup>st</sup> week of July**
3. GoldenGate for online-offline (condDB) **week of 21<sup>st</sup> of July**
4. GoldenGate for offline-T1s **1<sup>st</sup> week of September**



**THANK YOU!**