

# 2014 IMC Debriefing:

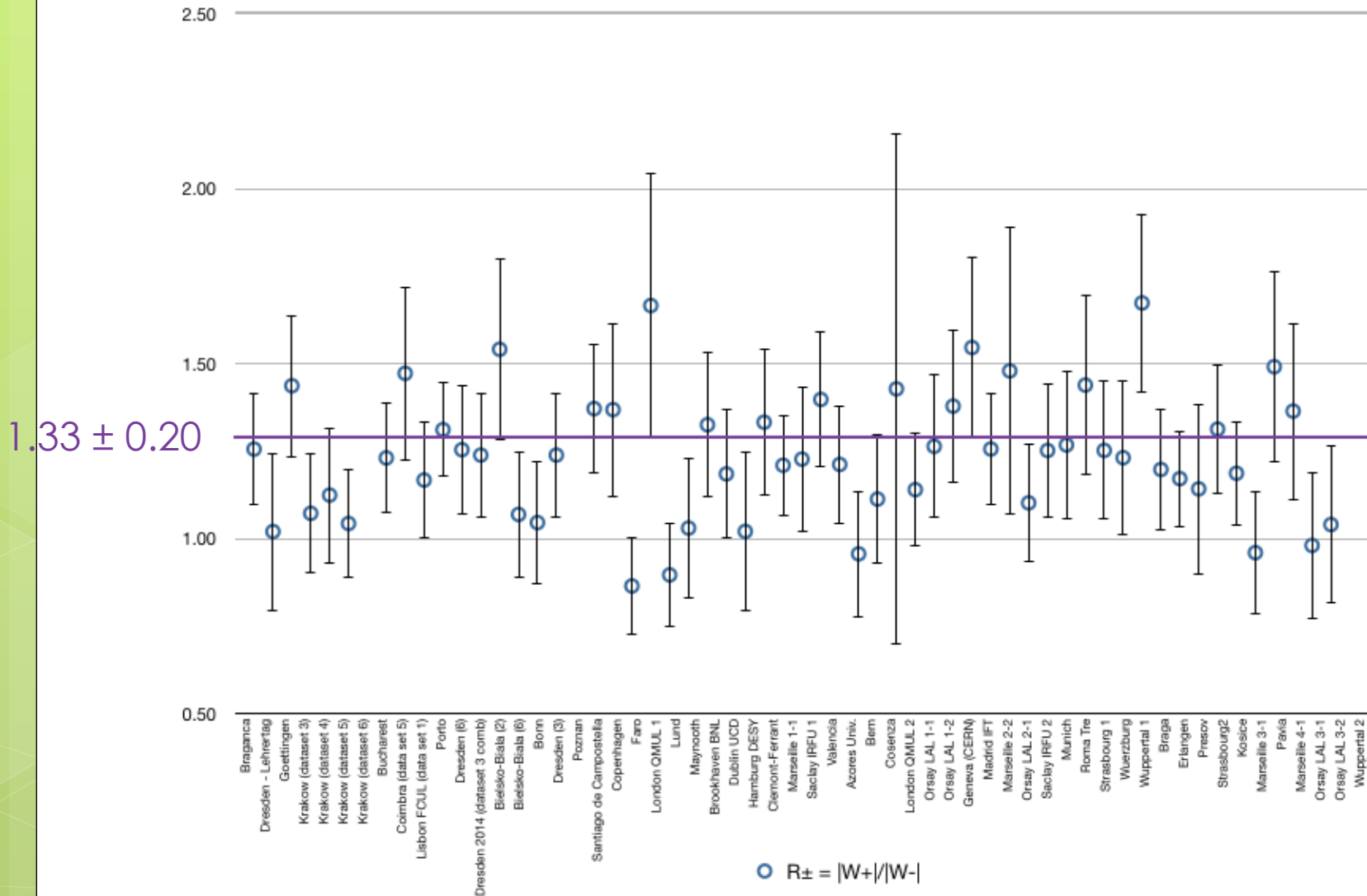
## ATLAS W-path

### Content

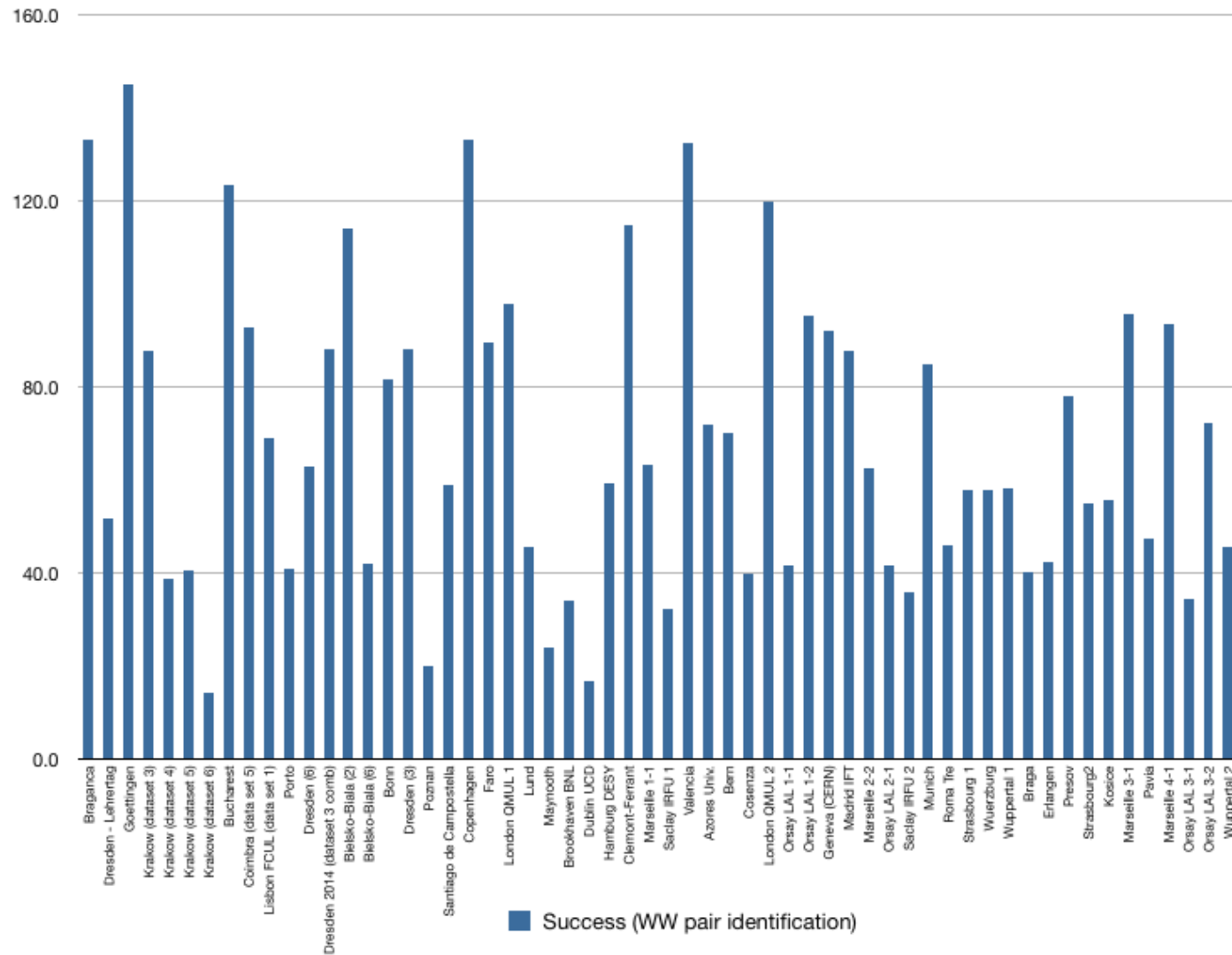
1. Students' Results
2. Website statistics
3. Outlook

### Interesting topics:

- 51 institutes participated
- 45155 events analysed
- 1800 students involved (at least)
- better performance by students
- renew pre-selection of data for measuring the electric charge asymmetry

IMC 2014:  $R_{\pm}$  measurement

### IMC 2014: success of finding W pair events



<b>Unique Visitors 2014 (2013):</b>	<b>4,023 (4,151)</b>
<b>Number of Visits:</b>	<b>5,171 (5,930)</b>
<b>Number of visited pages:</b>	<b>32,811 (45,583)</b>
<b>Bandwidth:</b>	<b>23.9 GB (37.2 GB)</b>

*Data valid for the website [www.cern.ch/kjende/\\*.htm](http://www.cern.ch/kjende/*.htm) and the period between March 13 and April 16 2014 (2013 respectively)*

## Browsers Top 5



Google Chrome

**Google Chrome: 37%**



**Firefox 29%**



**Apple Safari: 11%**



**Internet Explorer: 8%**



**Opera: 1%**

## Downloads Top 3

- 1. MINERVA: 238**
- 2. Exercise 2: 81**
- 3. Tallymarks: 46**

Upgrade our data set

- replace data partly for measuring electric charge asymmetry ( $W^+/W^-$ )
- aim: increase success and decrease difficulties for students
- Sebastian Gemsheim (SHK), Felix Socher (both TU Dresden)

**Room for your feedback – thank you!**