



HELMHOLTZ ASSOCIATION

Promotion of early stage researchers

Nina Löchte, 17th November 2014

Helmholtz Mission

- **Strategic research for grand challenges** with cutting-edge research
- **Think big, act big:** Developing and operating **complex infrastructure and large-scale facilities** for the national and international scientific community
- **Creating wealth** for society and industry through transfer of knowledge and technology

Facts and Figures

- 37,148 Staff (status as of 2013)
 - 15,169 scientists
 - 6,789 PhD students
 - 1,657 vocational trainees
- Budget 2014: €3.76 billion
 - €2.58 bn (budget approach*): Institutional funding (90% federal, 10% state)
 - €1.07 bn: Third-party funding* (based on actual costs 2013)
 - €0.13 bn: Special Financing

*including contracts of project management agencies and other revenues, excluding project sponsorships totalling about €187 M

Helmholtz Centres

- Alfred Wegener Institute Helmholtz Centre for Polar and Marine Research
- Deutsches Elektronen-Synchrotron DESY
- German Cancer Research Center
- German Centre for Neurodegenerative Diseases
- German Aerospace Center
- Forschungszentrum Jülich
- GSI Helmholtz Centre for Heavy Ion Research
- Helmholtz-Zentrum Berlin für Materialien und Energie
- Helmholtz-Zentrum Dresden-Rossendorf
- Helmholtz Centre for Environmental Research - UFZ
- Helmholtz Centre for Infection Research
- GEOMAR Helmholtz Centre for Ocean Research Kiel
- Helmholtz-Zentrum Geesthacht - Centre for Materials and Coastal Research
- Helmholtz Zentrum München –
German Research Center for Environmental Health
- Helmholtz Centre Potsdam GFZ, German Research Centre for Geosciences
- Karlsruhe Institute of Technology
- Max Delbrueck Center for Molecular Medicine (MDC) Berlin-Buch
- Max Planck Institute for Plasma Physics (associated)

Cutting-Edge Science in Networks

The Six Research Fields

ENERGY

EARTH & ENVIRONMENT

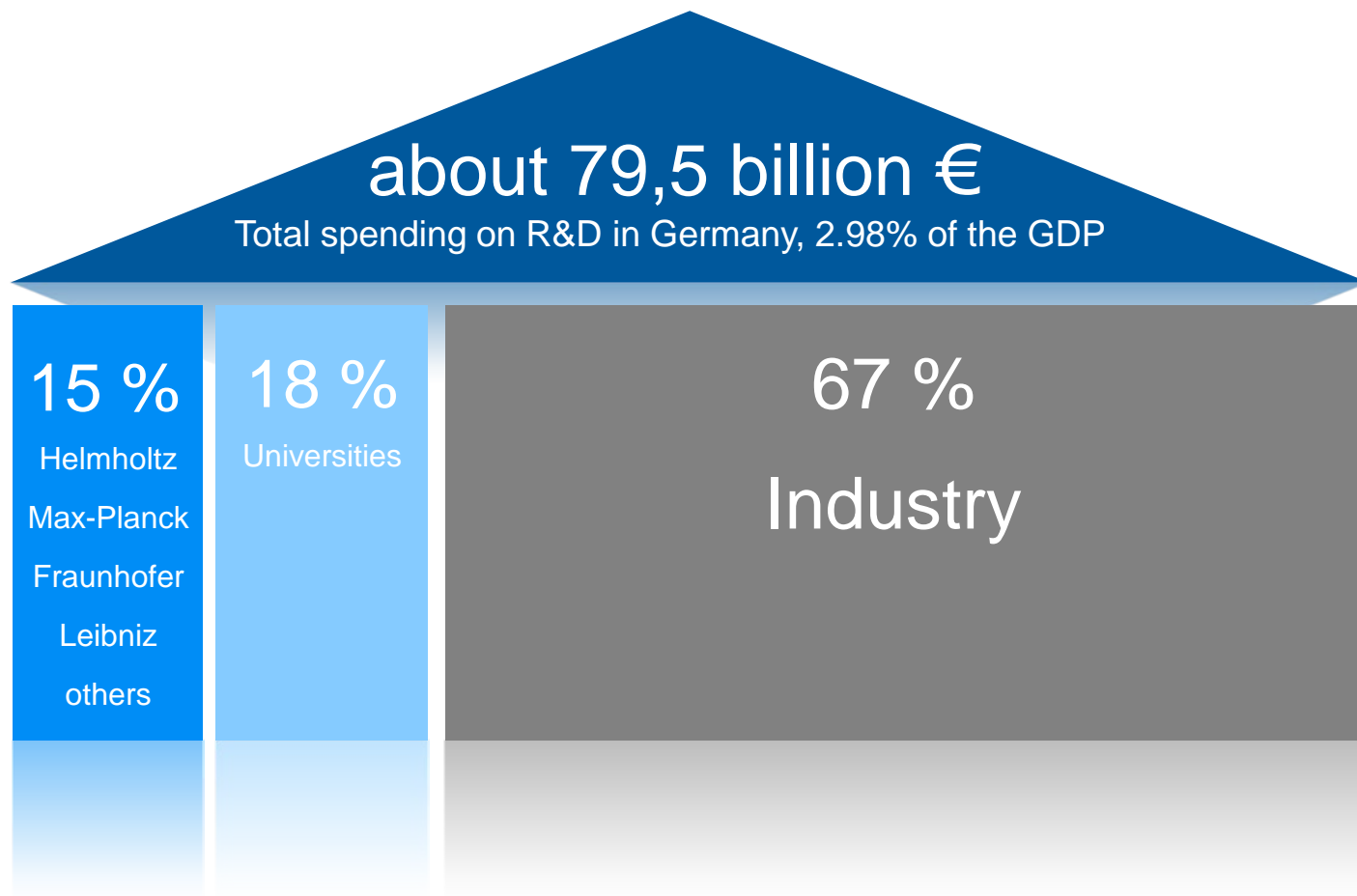
HEALTH

AERONAUTICS, SPACE AND TRANSPORT

KEY TECHNOLOGIES

STRUCTURE OF MATTER

The German Research System



German Research Organisations

(actual costs 2013)

	Budget/ Billion€	Staff in FTE*	Centres/ Institutes
Helmholtz Association Use-inspired basic research with strategic programmes	3.55**	33,027	18
Max Planck Society Pure basic research	1.75	13,383	89
Fraunhofer Society Industry-oriented research and development	1.92	17,024	67
Leibniz Association Long-term research topics	1.34	13,703	89

Source: GWK Monitoring Report 2014 Joint Initiative for Innovation and Research

*Staff in working hours (full-time equivalent)

**excluding project sponsorships, project management agencies and other revenues

Helmholtz International

- Base for new large-scale facilities with international participation, e.g. European XFEL, FAIR
- Participation in international projects, e.g. ITER
- Bilateral partnerships around the world
- 7,400 visiting scientists at Helmholtz Centres
- Liaison offices in Brussels, Moscow, Beijing

International contracts and collaborations involving the Helmholtz Association (worldwide)



We Promote Talent

- Little Scientists' House
- 25 Helmholtz School Labs
- 1,652 vocational trainees
- Training of 6,789 PhD students
- 34 Helmholtz PhD Programmes
- 50 Fellows in Helmholtz-Postdoc-Programme
- 180 Helmholtz Young Investigators Groups with tenure option
- Helmholtz Management Academy
- Mentoring

The Initiative and Networking Fund

- Strategic instrument of the Helmholtz Association
- Respond promptly and flexibly to challenges
- Annual budget of 80 million euros
- All grants are awarded in a competitive process
- The fund provides support in five key areas:
 - Helmholtz Alliances to Occupy Key Future Research Topics
 - Helmholtz Virtual Institutes: Expanding Networks within the Scientific Community
 - Creating Frameworks for Top-Flight Research
 - Assuring Excellence
 - **Promoting Young Researchers**

Helmholtz Postdoc Programme

- Start of programme in 2012
- Annual Call for 20 positions
- 100.000 € (approx. 130.000 \$) per year
- Funding period of 3 years
- Transferable skills courses and mentoring programme
- Stay abroad is welcome
- At least 50 % of positions will be granted to women

Helmholtz Postdoc Programme

Requirements and Selection Process

Requirements

- 0-1 year after PhD
- Scientific excellence (thesis, publications, awards, talks, conferences...)

Selection process

- Helmholtz Centre: Pre-Selection
- Helmholtz Head Office: Pre-Selection after written assessments from international reviewers
- Helmholtz Head Office: Final Selection by interdisciplinary panel

Next Call: April 2015

Helmholtz Young Investigators Groups

- Annual Call for 20 new groups
- 250.000 € (approx. 350.000 \$) per year (staff, infrastructure, material)
- Funding period of 5-6 years
- Scientific independence in an early career stage
- Reliable career prospects based on proven research performance (Tenure Option)
- Possibility of a jointly appointed Professorship

NEW in 2015: Up to 4 Fellowships with Bosch.

Helmholtz Young Investigators Groups Requirements and Selection Process

Requirements

- 2-6 years after PhD
- Scientific excellence

Selection process

- Helmholtz Centre: Pre-Selection
- Helmholtz Head Office: Pre-Selection after written assessments from international reviewers
- Helmholtz Head Office: Final Selection after oral presentation in front of an interdisciplinary panel

Next call: March 2015

How to become a PhD Student/ a Postdoc at Helmholtz outside the Programmes

Check the vacancies at our website www.helmholtz.de

The screenshot shows the Helmholtz website's job search interface. At the top, there is a navigation bar with the Helmholtz logo and the text 'HELMHOLTZ GEMEINSCHAFT'. Below this, there are several menu items: 'FORSCHUNG', 'HELMHOLTZ-ZENTREN', 'AKTUELLES', 'ÜBER UNS', 'JOBS & KARRIERE' (which is highlighted), and 'PAKT FÜR FORSCHUNG UND INNOVATION'. On the right side of the top bar, there are links for 'Mobil', 'Kontakt', 'Suche', 'Impressum', 'Sitemap', 'Glossar', 'English', 'Русский', and '中文'. The main content area is titled 'Stellenangebote der Helmholtz-Gemeinschaft'. It includes a search bar with the placeholder 'Suchbegriff' and a search button. Below the search bar, there are several filters: 'Wissenschaft / Postdoc', 'alle Standorte', and 'alle Forschungszentren'. A search button labeled 'Suchen' is also present. The page indicates that there are 144 results and shows the first 10 results. A map of Germany is displayed on the right side, with various Helmholtz research centers marked with their abbreviations: AWI, DESY, HZG, MDC, HZI, GFZ, HZB, UFZ, HZDR, GSI, IPP, KIT, DKFZ, DLR, and DZNE. Below the map, there is a text box titled 'Die Helmholtz-Gemeinschaft' which states: '... ist mit 17 Forschungszentren, 30.000 Mitarbeiter und einem Jahresbudget von rund 3 Milliarden Euro die größte Wissenschaftsorganisation Deutschlands.' At the bottom of the page, there is a table header with columns: 'Datum / Standort', 'Arbeitsbereich / Titel / Forschungszentrum', and 'Forschungsbereiche'.

- Vacancies of all Helmholtz Centres

- Comprehensive search engine

- Currently 150 open PhD/Postdoc positions

Or get in touch with the Centres directly.

Further information

www.helmholtz.de

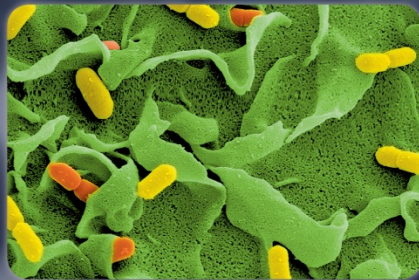
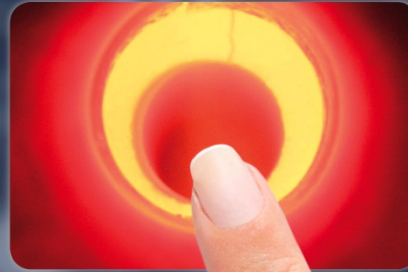
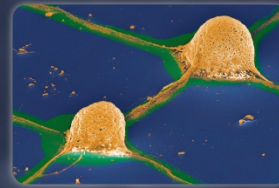
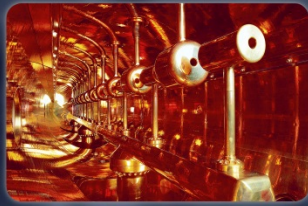
www.helmholtz.de/career

www.helmholtz.de/phd

www.helmholtz.de/postdoc

www.helmholtz.de/yig

nina.loechte@helmholtz.de



Thank you for your attention!