

# LHCOPN update

Ann Arbor, 15th of September 2014  
edoardo.martelli@cern.ch

# Update



## **RRC-K1-T1:**

- Two 10G to CERN, one via Amsterdam one via Budapest

## **US-T1-BNL**

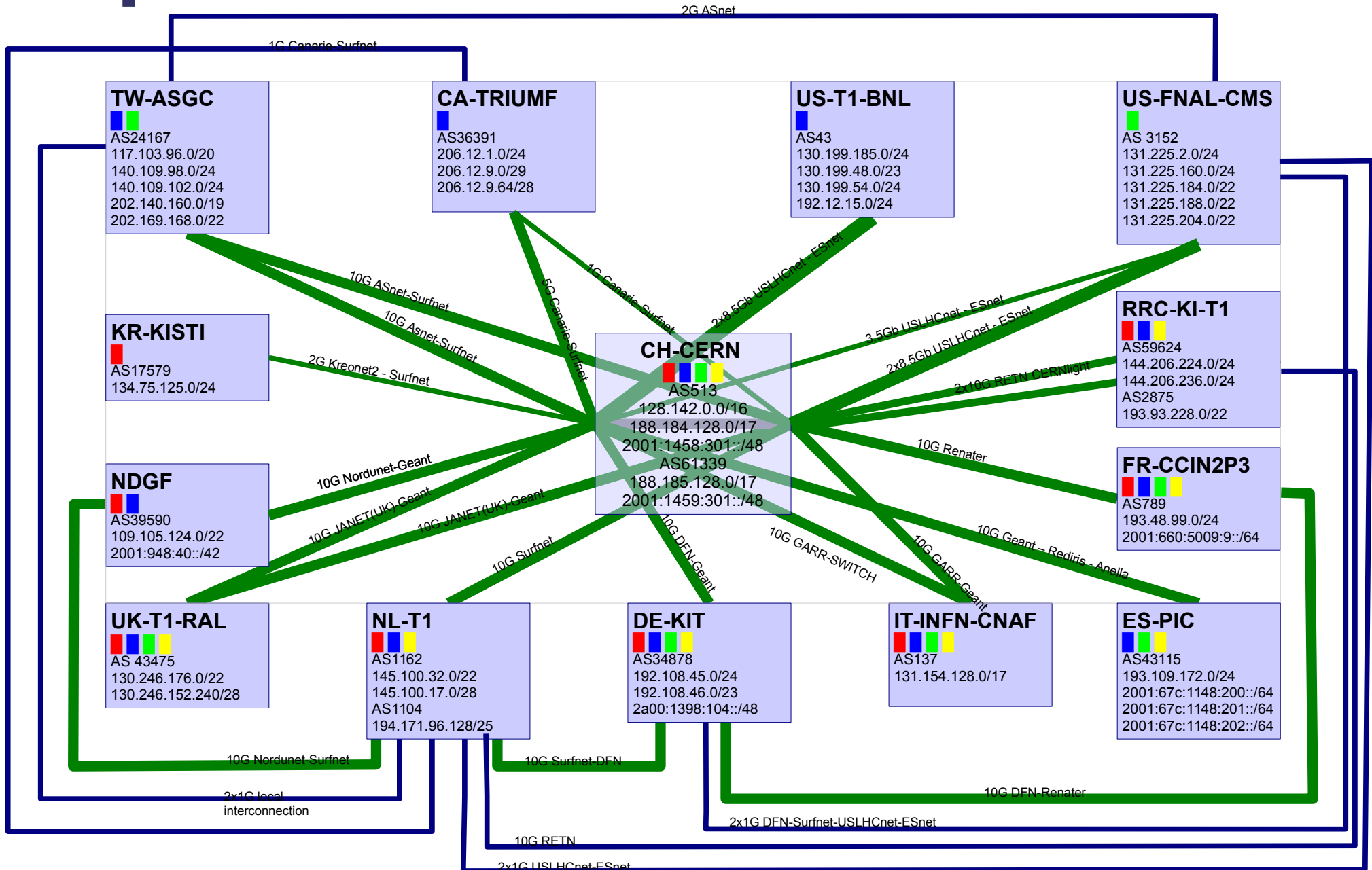
- 100G connection to ESnet
- Backup via LHCONE

## **CH-CERN**

- soon connecting with 2x100G to Esnet and 1x100G to Geant in Geneva

# Map

# LHCOPN



— T0-T1 and T1-T1 traffic  
— T1-T1 traffic only  
- - - Not deployed yet  
— (thick) >=10Gbps  
— (thin) <10Gbps

■ = Alice    ■ = Atlas  
■ = CMS    ■ = LHCb

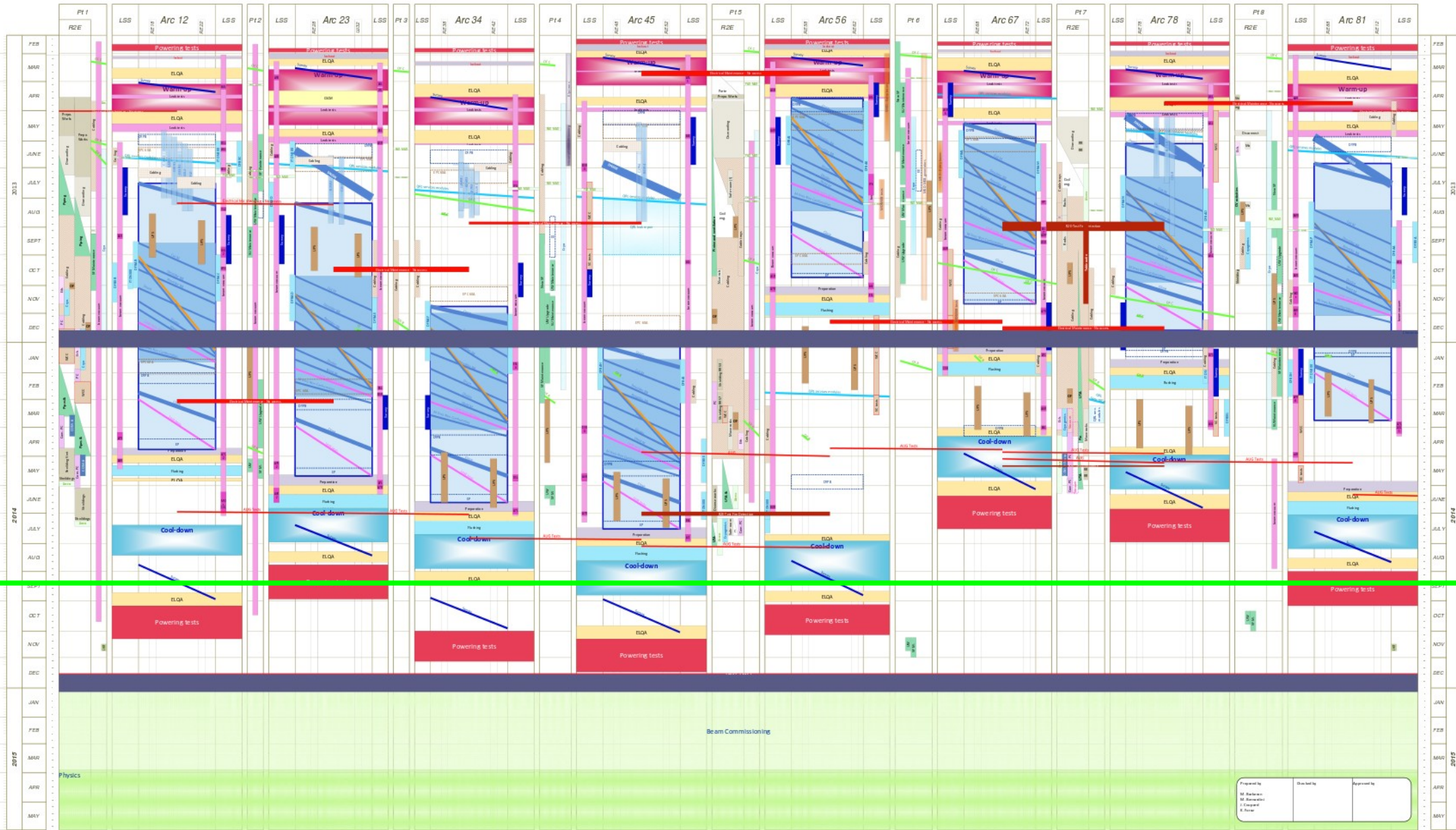
p2p prefix: 192.16.166.0/24 - 2001:1458:302::/48  
 edoardo.martelli@cern.ch 20140910

# LHC Long Shutdown 1: on-time



LS1 schedule in the LHC machine

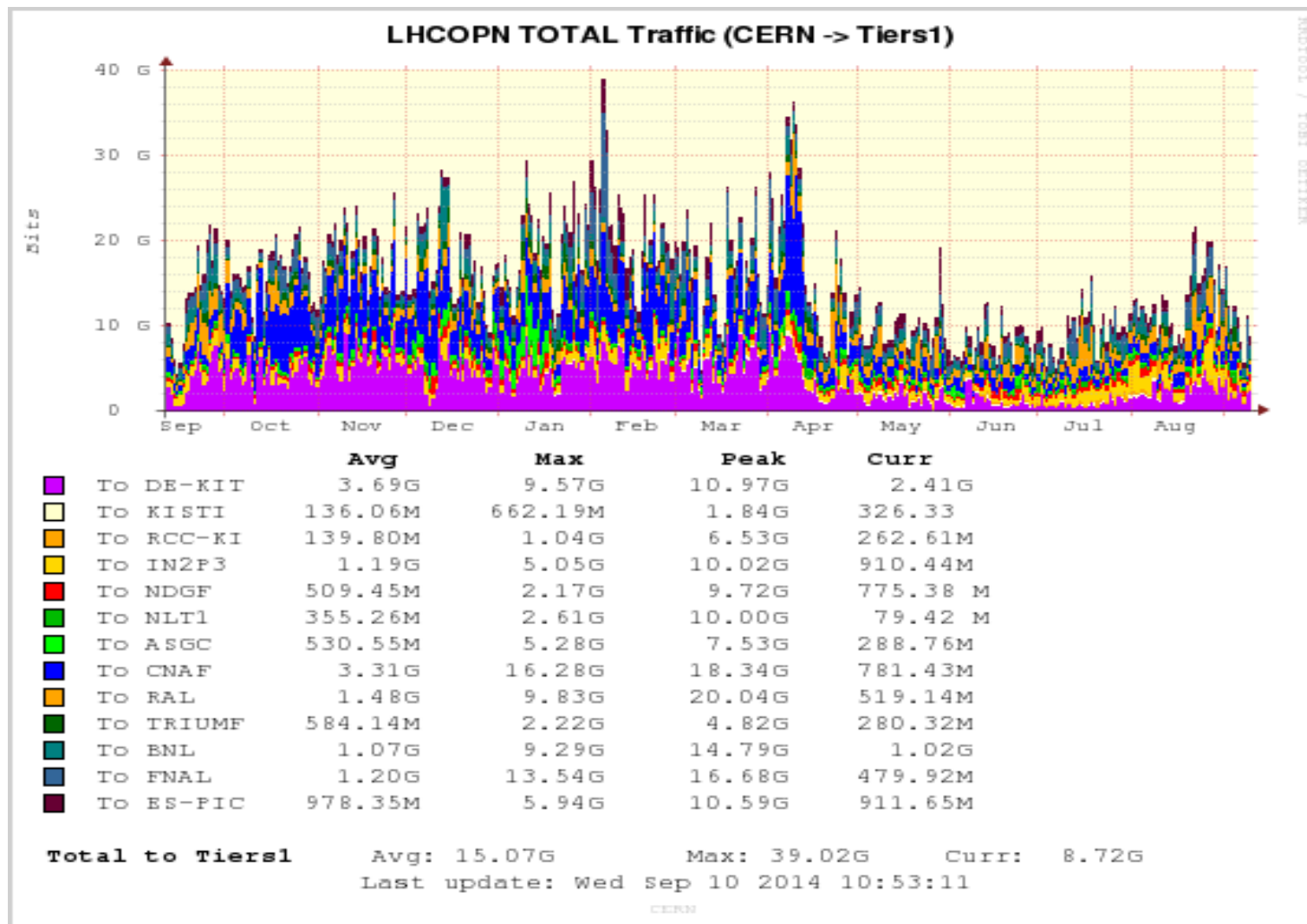
LS1 Plan Approved by LHC-PMAS 06/10/13  
 LHC-PMAS 06/10/13  
 LHC-PMAS 06/10/13  
 LHC-PMAS 06/10/13



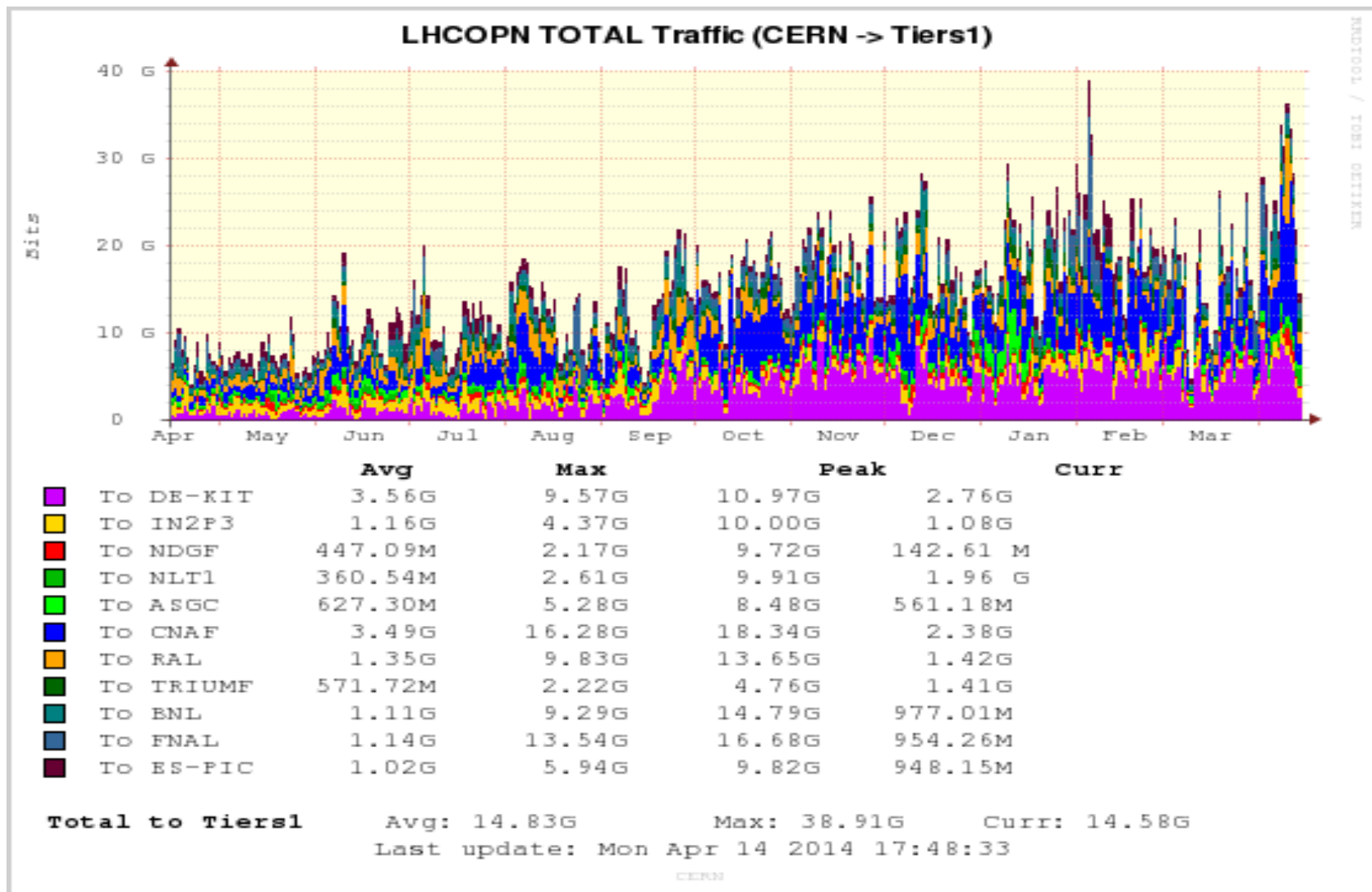
# Long term planning



# LHCOPN traffic trend



# (previous graph, April 2014)



**Questions?**