

# APAN Network

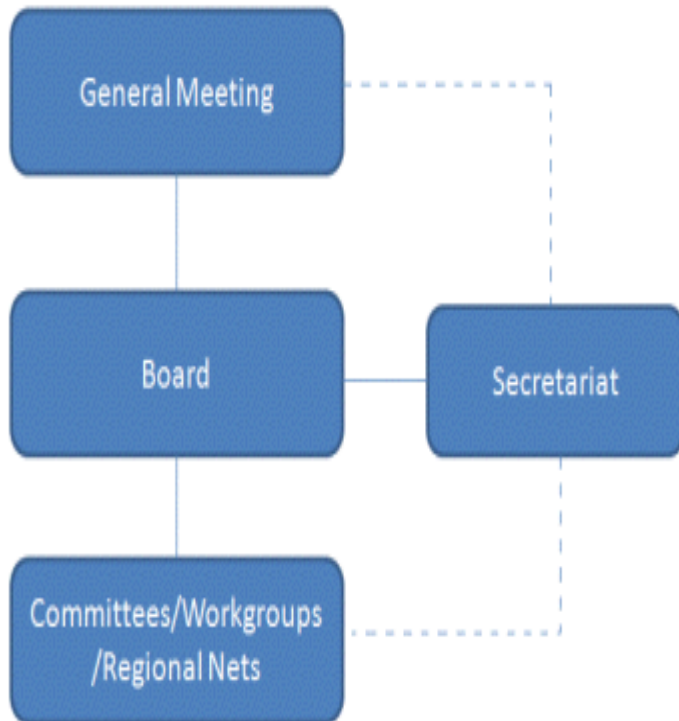


DY Kim / APAN

# APAN

- 1997: Founded as a non-profit consortium
- 2006: Bylaws formed
- 2009: APAN Ltd. incorporated in Hong Kong
  - a non-profit company
- Secretariat
  - KR(97-06), TH(06-09), SG(09-11), LK(11-)

# APAN Ltd Organization Structure



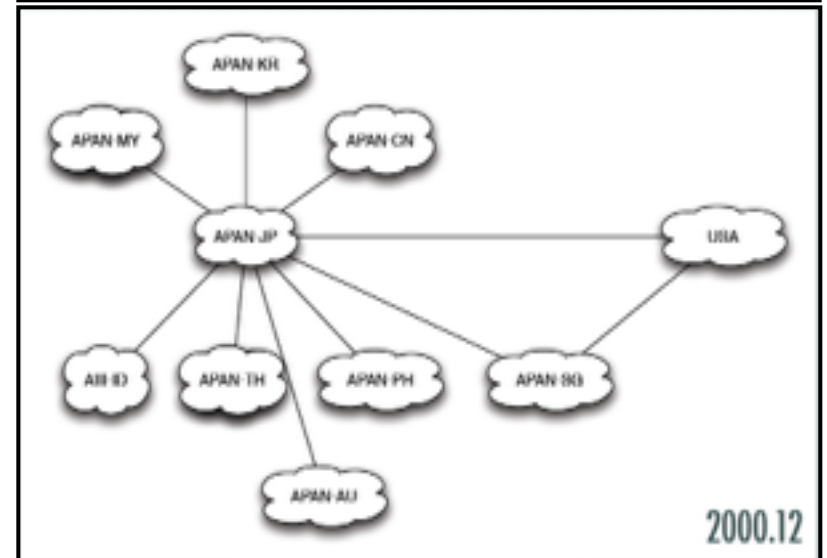
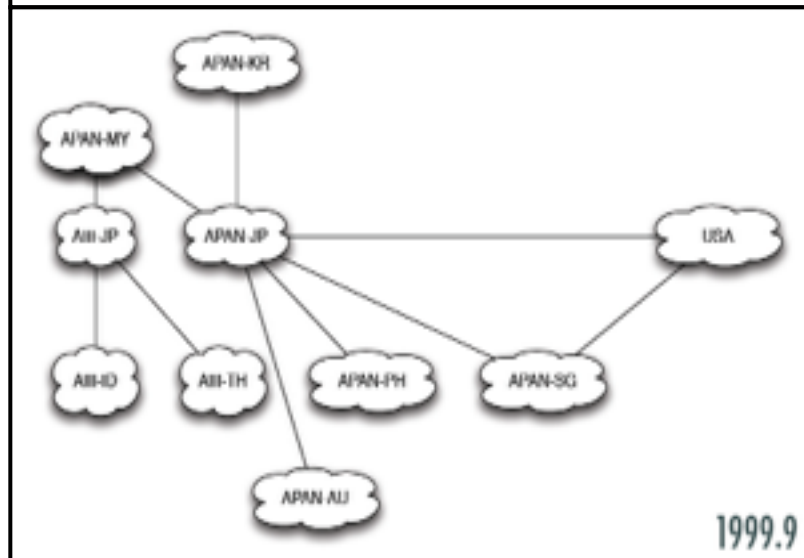
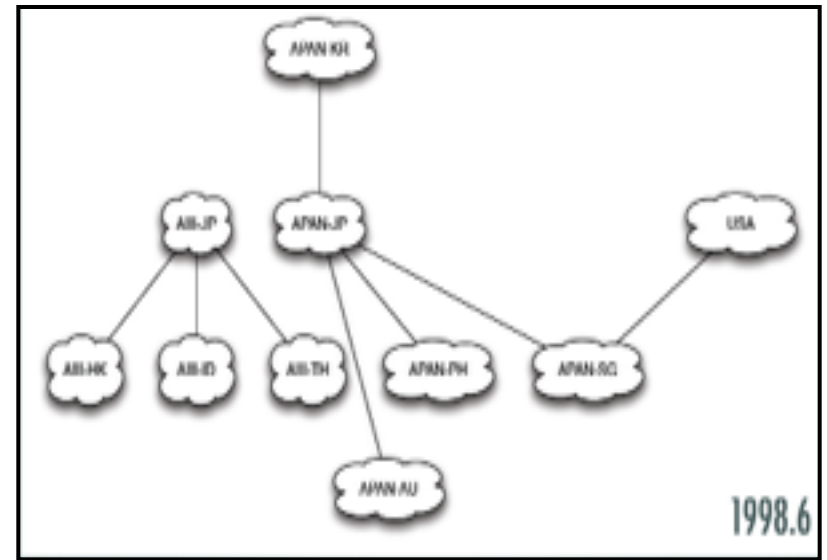
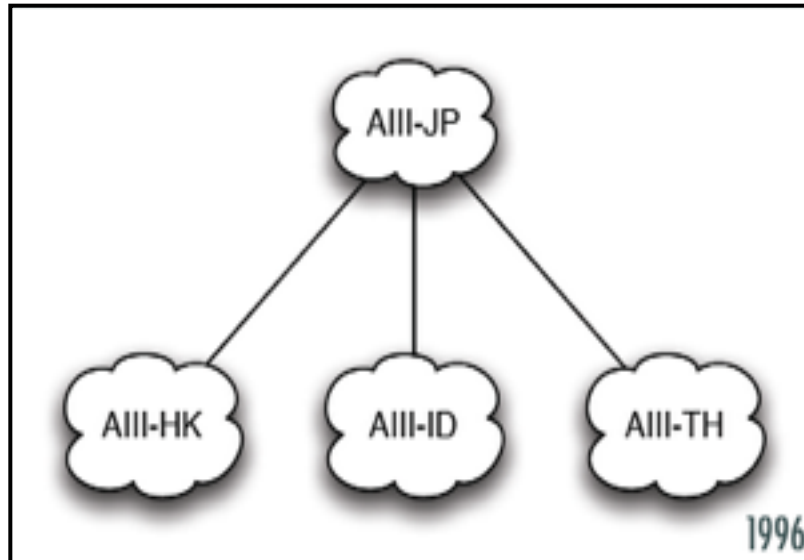
- Membership (38)
  - Primary (16)
  - Associate (3)
  - Affiliate (12)
  - Liaison (5)
  - Industry (2)
- Areas (3)
- Committees (6)
- Working Groups (16)

# Directors, GM & Secretary

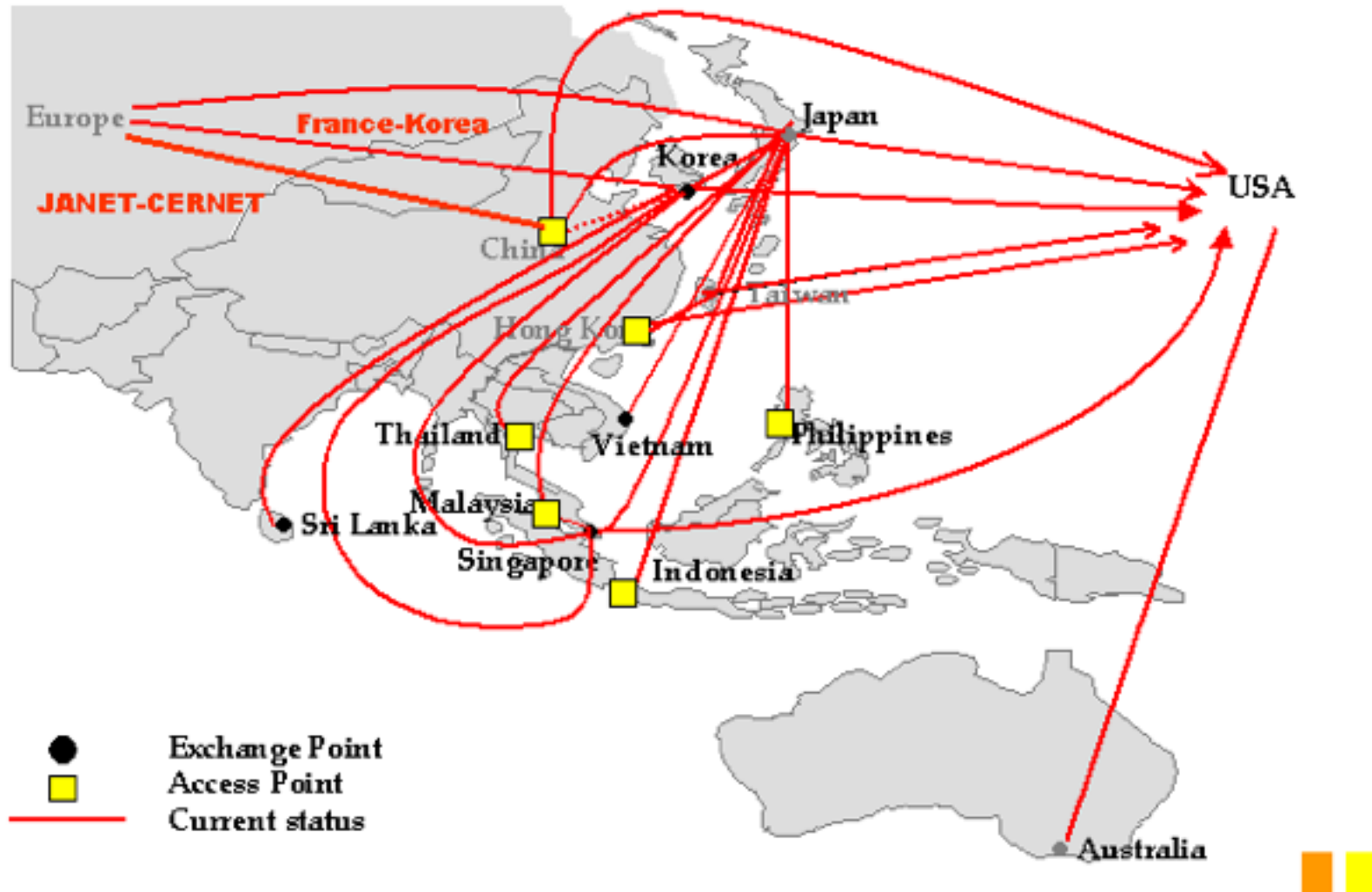
- Advisors: George McLaughlin, Shigeki Goto  
Jianping Wu
- Directors: DY Kim(Chair), Nimal Ratnayake  
Sures Ramadass, Simon Lin  
Yasuichi Kitamura, Jennifer An
- Company Secretary: P. T. Ho (HK)
- General Manager: Markus Buchhorn
- Secretariat Office: LEARN, Sri Lanka



# APAN Backbone (1996-2000)



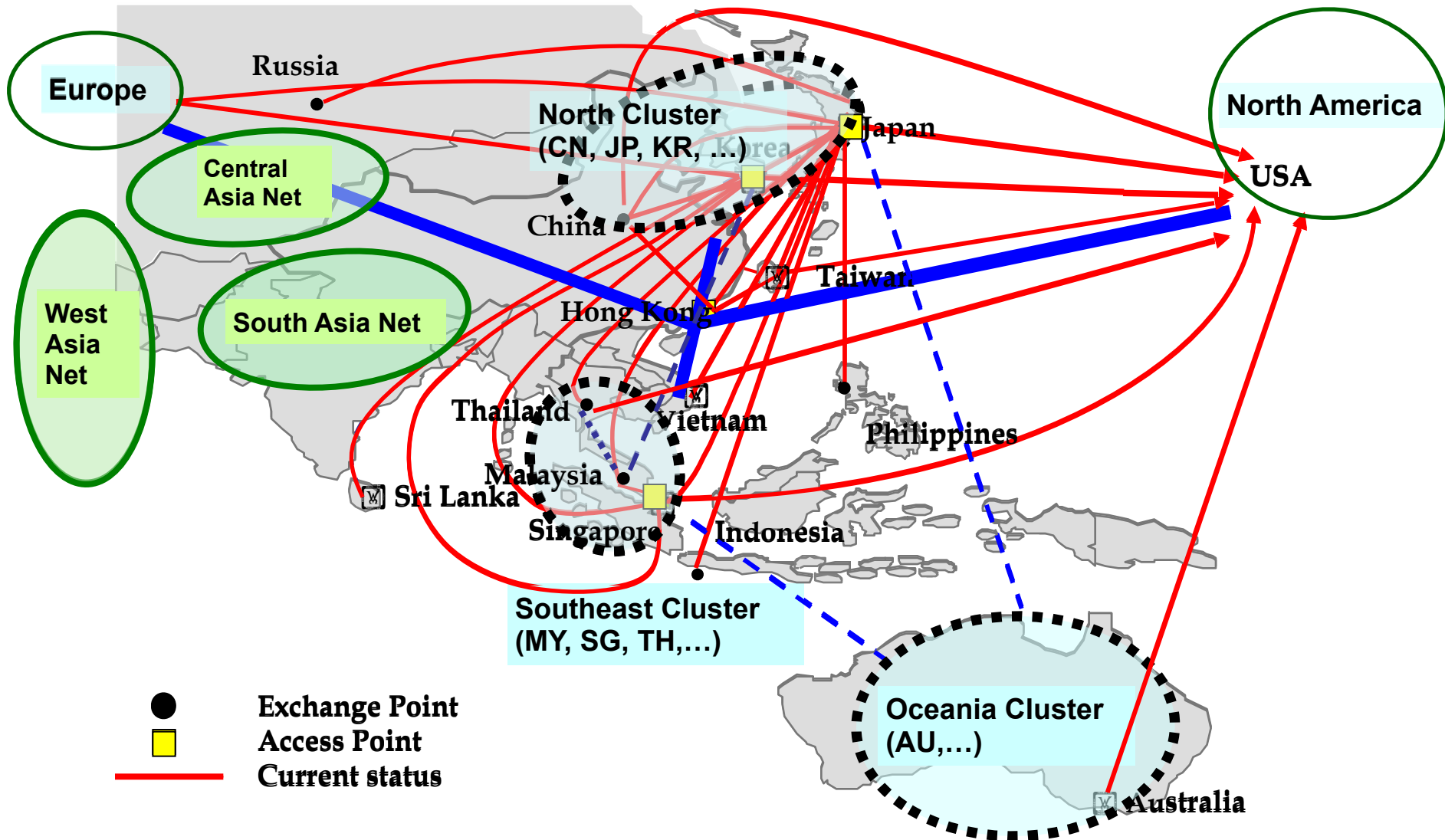
# APAN Backbone (2001 - 2005)



# APAN Backbone Plan

- Network Model
  - Clusters, Hubs
  - Backbone(International Links)
  - Access Links
- Strategy
  - Focus on hubs and international links
  - Spirit of non-exclusive transit service
  - BYOL: Bring Your Own (Access) Links
- Clusters
  - NE, SE, Oceania, South, *Pacific Islands*

# APAN Clusters (2003.10)





# APAN Network: fund-base



Asia-Pacific Backbone Topology  
by funding source



# APAN Network: project-base



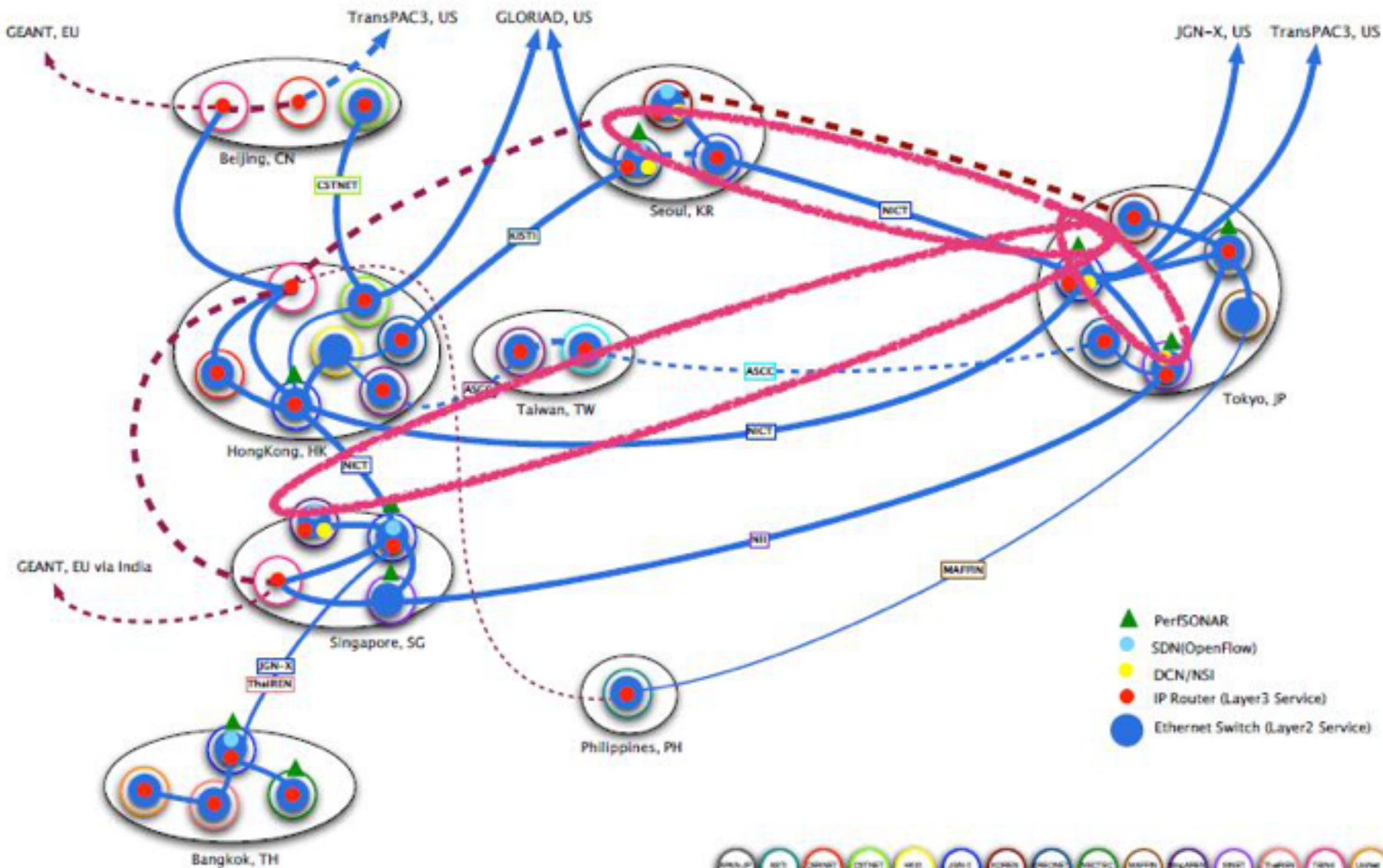
Asia-Pacific Backbone Topology



TransPAC3  
TEIN3  
JGN-x SINET4  
AARNet GLORIAD  
Others

# Asian Backbone: L2 Network

## Current Asian Backbone Network



# APAN Interactive Map

- To automate the compendium
- <http://www.nav6.org/apan/>

# International Collaborations

- America
  - Internet2: Jt mtg in Hawaii every 4 years
  - NSF + Indiana Univ.: TransPAC (98-13)
  - Pacific Wave, CENIC, CANARIE, ...
  - RedCLARA, RNP, ...
- Europe
  - TERENA
  - EU + DANTE: TEIN
  - SURFNET, i2CAT, NORDNET, ...
- PRAGMA, Gloriad/Taj, Sol, ...



# Challenges from APAN

- Continuing focus on APAN as an organization that represents infrastructure interests in Asia
- Stronger linkages between applications and infrastructure - neither can exist independently
  - among APAN members
  - with International partners; medical, e-culture, ...