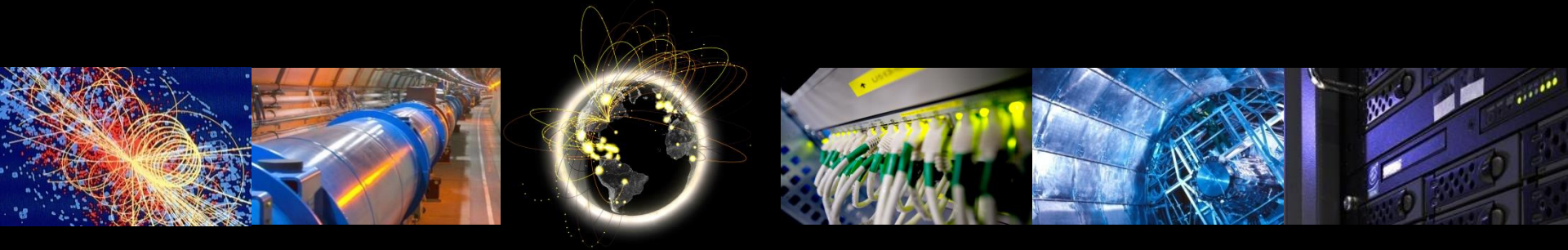


WLCG Information System Status

Maria Alandes Pradillo, CERN

CERN IT Department, Support for Distributed Computing Group

GDB 9th September 2015



Contents

- BDII development and issues
- BDII and GLUE deployment
- GLUE 2 validation
- Information System Evolution TF
- Summary



BDII development

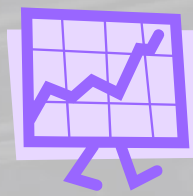


- No releases since the last GDB presentation (September 2014)
- CENTOS7 rpms are now ready and being tested by EGI
 - CENTOS7 version = SL5/SL6 version
 - Installation successful
 - Functionality not tested yet

BDII issues

- slapd process crashing sometimes
 - When upgrading to to SLC6.7/CentOS 6.7
 - Includes a new version of openLDAP: openldap-servers-2.4.40-5
 - WLCG suggests sites not to upgrade to this version of openLDAP
 - Problem experienced at CERN and NIKHEF
 - NIKHEF was able to reproduce it and opened a ticket to Redhat

BDII deployment status



- <https://wlcg-mon/dashboard/request.py/siteview#currentView=BDII+deployment>
 - All GOCDB + OSG sites
 - Most BDIIs running the latest version released one year ago

Today

	5.2.10	5.2.12	5.2.17	5.2.21	5.2.22	5.2.23	#Endpoints
bdi_site	2	2	2	0	70	237	313
bdi_top	1	2	1	1	13	66	84

One year ago

	5.2.10	5.2.12	5.2.17	5.2.20	5.2.21	5.2.22	#Endpoints
bdi_site	2	3	1	0	2	315	323
bdi_top	0	1	1	1	1	79	83

GLUE deployment status



- <https://wlcg-mon.cern.ch/dashboard/request.py/siteview#currentView=Glue+Deployment>
 - All GOCDDB + OSG BDIIs
 - The number of GLUE 2 DNs has increased over the last year (i.e. more storage protocols being published by the SEs)

Today

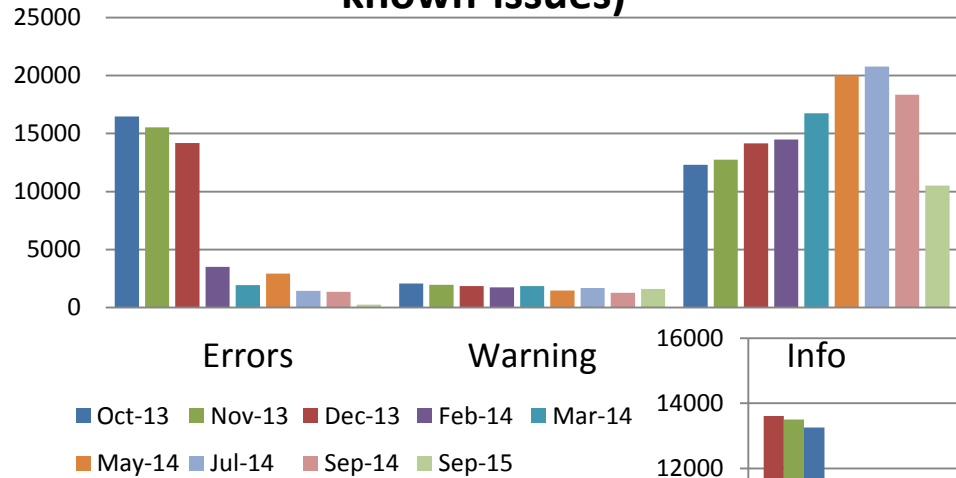
	GLUE1 DNs	GLUE1 Data Size	GLUE2 DNs	GLUE2 Data Size	GLUE1 Sites	GLUE2 Sites	GLUE1 Endpoints	GLUE2 Endpoints	GLUE1 Endpoint Types	GLUE2 Endpoint Types	GLUE2 Services	GLUE2 Service Types
lcg-bdii	53250	51MB	105740	101MB	351	312	2780	4783	30	54	1817	34

One year ago

	GLUE1 DNs	GLUE1 Data Size	GLUE2 DNs	GLUE2 Data Size	GLUE1 Sites	GLUE2 Sites	GLUE1 Endpoints	GLUE2 Endpoints	GLUE1 Endpoint Types	GLUE2 Endpoint Types	GLUE2 Services	GLUE2 Service Types
lcg-bdii	57104	53MB	105073	99MB	369	325	3538	5018	30	56	1891	35

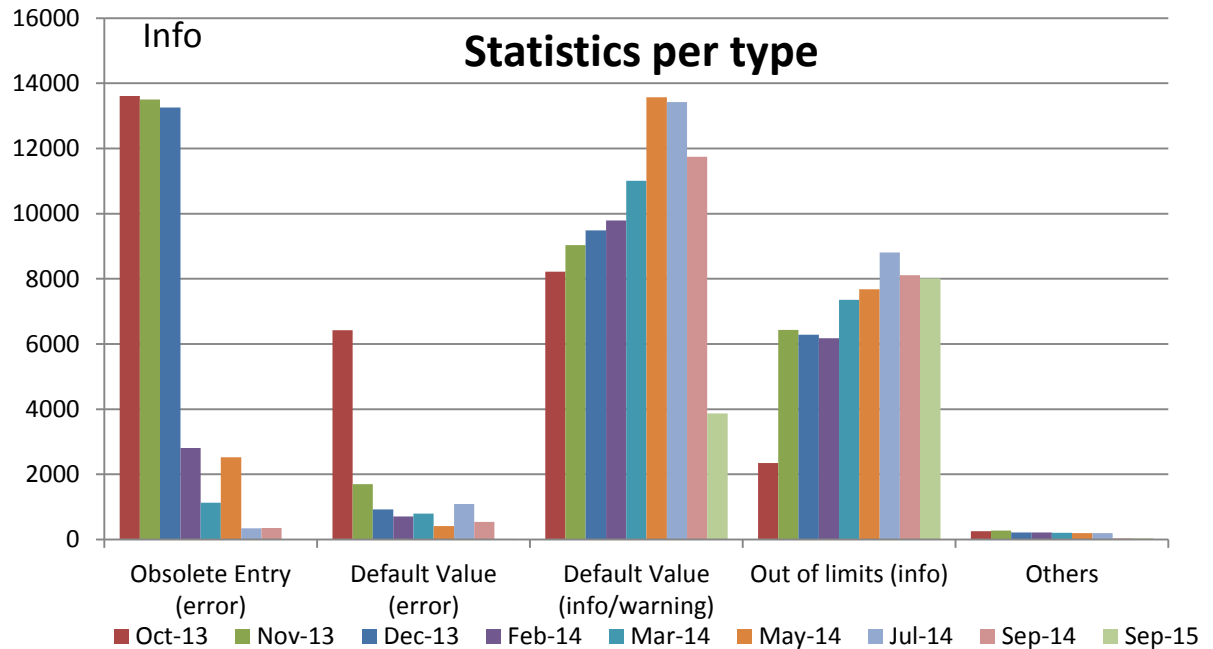
GLUE 2 validation statistics

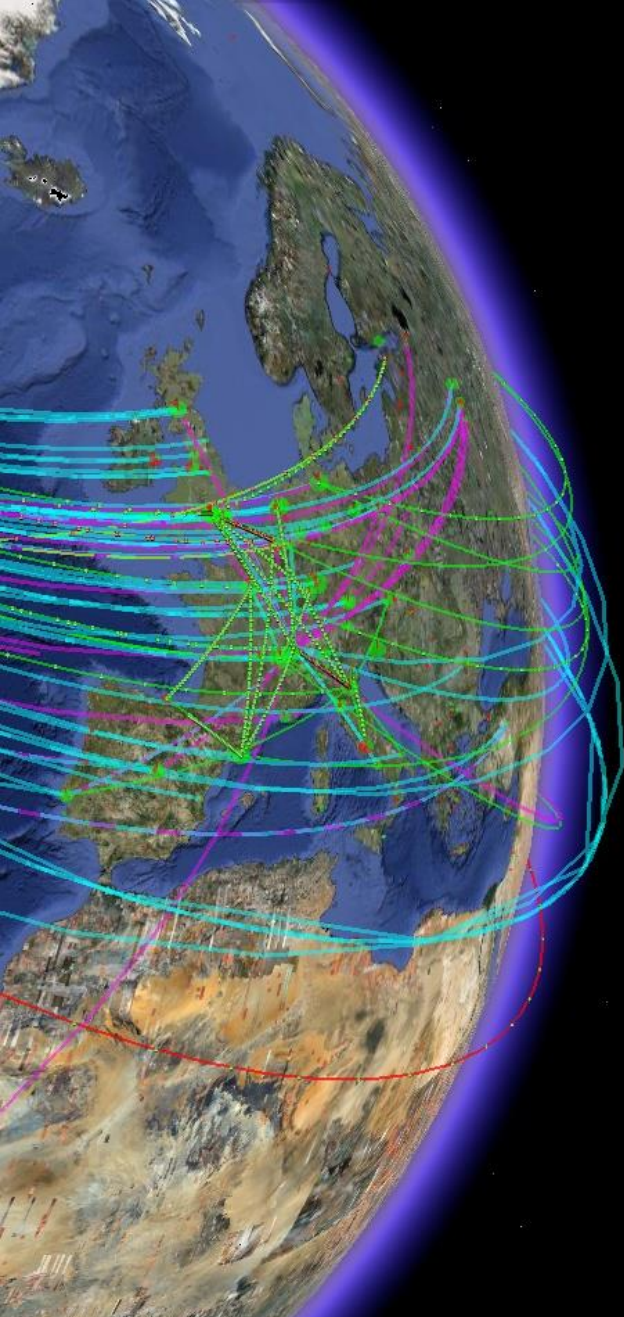
GLUE 2.0 Site Validation (exclude-known-issues)



- GLUE 2 validation automated for more than a year
- Managed by EGI

- Storage Capacities not validated
 - Considered as known issues but fixed by developers
 - Time to start validating them!





Information System Evolution TF

Motivation

- OSG announced their plans to stop publishing information in the BDII on 18.06.2015
<https://indico.cern.ch/event/393609/contribution/6/attachments/787658/1079691/WLCGOpsCoord-OSGBDII.pdf>
 - This means the WLCG Information System will not be able to offer the whole picture any more since OSG sites will be missing
- Moreover, the WLCG Information System suffers from a series of fundamental issues tied to its architecture and implementation
 - All these have been discussed for many years.
 - Check <https://indico.cern.ch/category/4475/> for meetings and minutes discussing Information System issues since 2012

Goals



- Short term goals
 - Fix outstanding issues in REBUS making sure it publishes correct information in a consistent way
- Long term goals
 - Identify the list of use cases we want to address
 - Confirm the list of requirements for the new Information System, making sure we address the known issues of the current system
 - Validation, persistency, flexibility, etc
 - Identify the authoritative sources of information from OSG, EGI and NDGF
 - Define a new architecture that takes into account the type of information: static, mutable or dynamic
 - Plan the implementation of the new system
 - Plan the transition to the new system

Status

- Outstanding REBUS known issues have been fixed
- First Use Case document draft circulated within the TF for comments
 - It will be presented at the next MB meeting
- OSG, NDGF and EGI will present their future plans for the IS at the next TF meeting (24th September)
 - We could then have a more clear timeline for the next steps
 - In particular, coordination with OSG will be needed in any case to plan for a smooth transition
 - It is very important that in the end we find an interoperating solution that addresses the identified use cases for all infrastructures
- For more details

<https://twiki.cern.ch/twiki/bin/view/EGEE/WLCGISEvolution>

Summary

- BDII service stable for the last year
- BDII information quality automatically validated and monitored
- TF in place to discuss and plan the future of the Information System

Useful Links

- Information System web page

<http://gridinfo.web.cern.ch>

- REBUS Known Issues

https://twiki.cern.ch/twiki/bin/view/EGEE/AllAboutREBUS#REBUS_known_issues

- GLUE validator error codes

<https://twiki.cern.ch/twiki/bin/view/EGEE/GLUEValidatorErrorCodes>