



Science & Technology  
Facilities Council

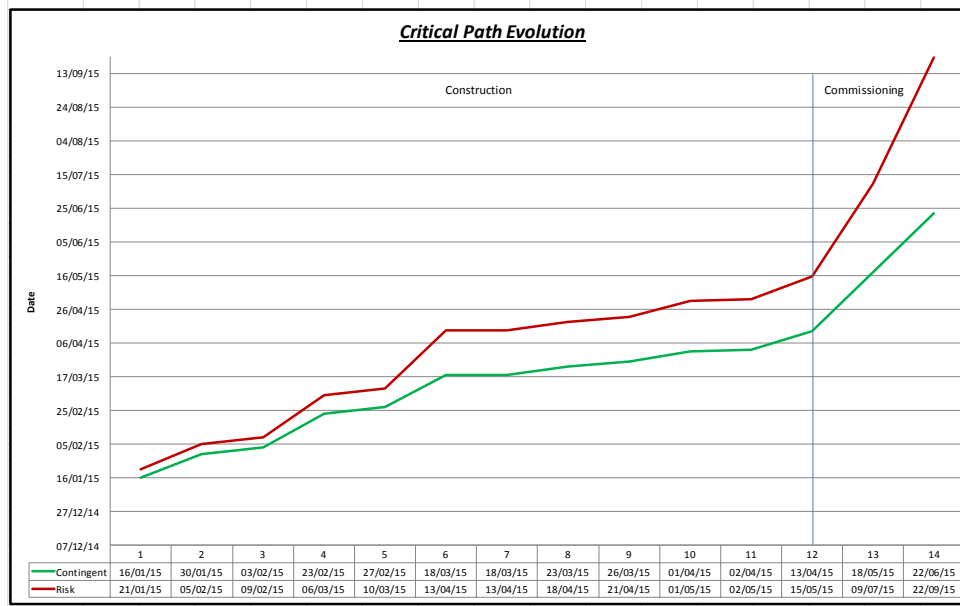
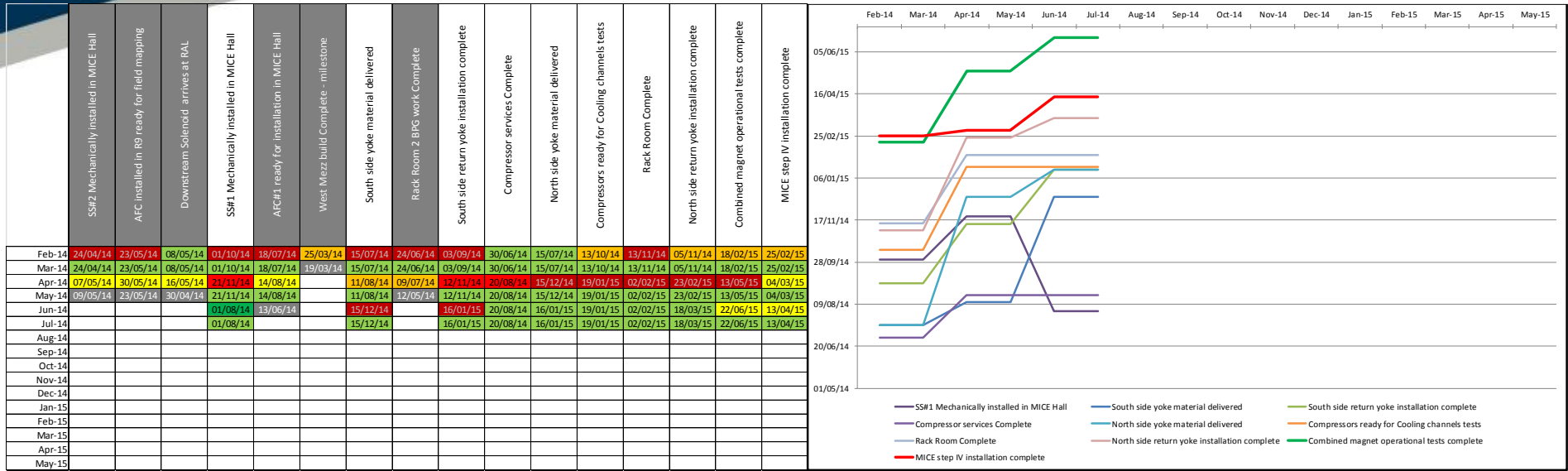
# Project Managers Update

Roy Preece

Particle Physics Department, STFC

MICE Video Conference, July 17<sup>th</sup> 2014

# MICE Dashboard



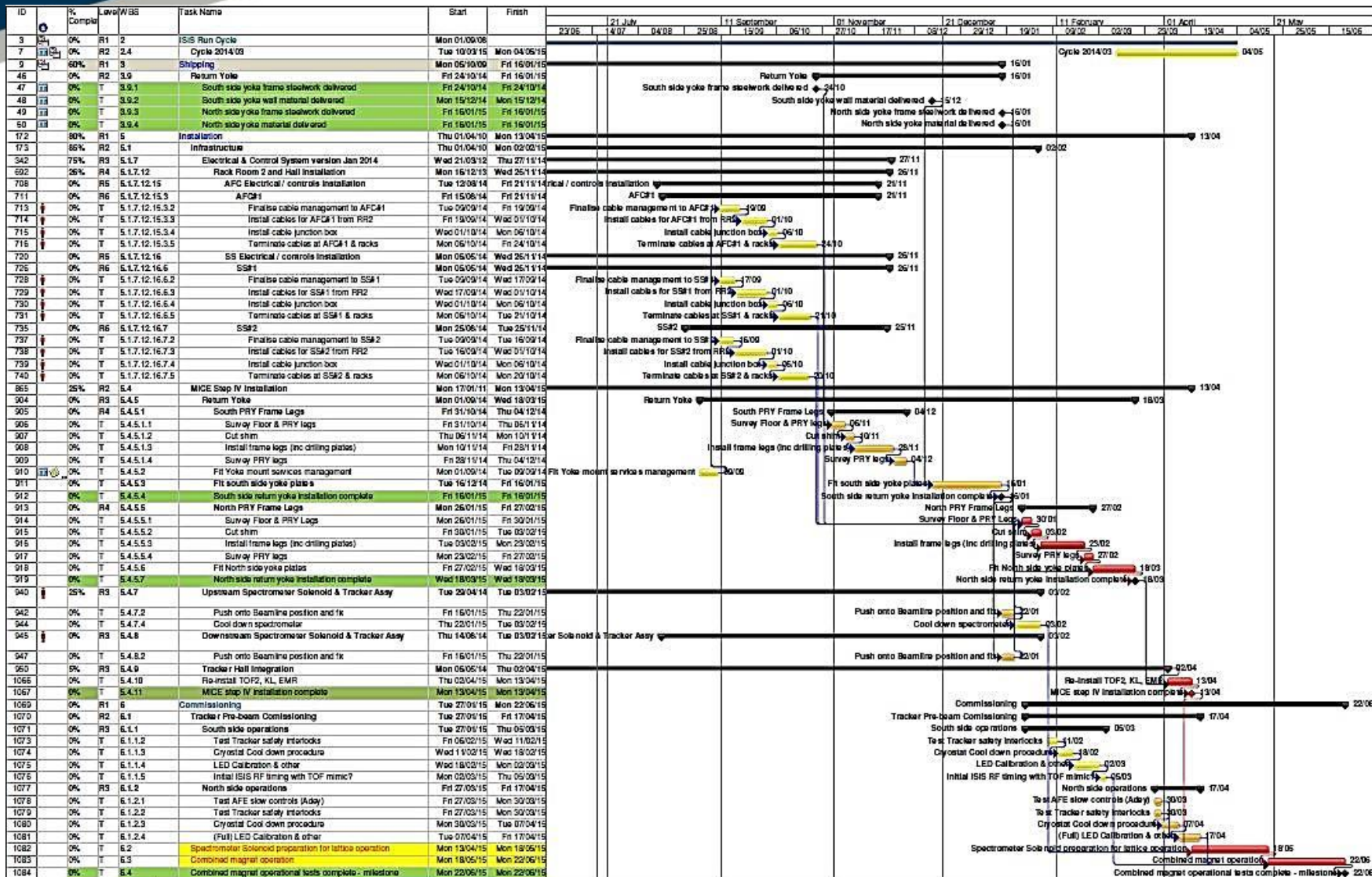
Critical Path Task	Finish date with Contingency	Delayed Finish due to Risk Realisation	Risk Level attributed to task	Duration of Risk level (days)	Probability of risk being attracted	Duration delay (Days)	Sequential Delay (Days)
North side yoke frame steelwork delivered	16/01/15	21/01/15	3	20	25%	5	5
Survey Floor & PRY Legs	30/01/15	05/02/15	5	5	25%	1.25	6.25
Cut shim	03/02/15	09/02/15	6	0	0%	0	6.25
Install frame legs (inc drilling plates)	23/02/15	06/03/15	4	10	50%	5	11.25
Survey PRY legs	27/02/15	10/03/15	6	0	0%	0	11.25
Fit North side yoke plates	18/03/15	13/04/15	3	20	75%	15	26.25
North side return yoke installation complete	18/03/15	13/04/15	6	0	0%	0	26.25
Cryostat stands - North side in place	23/03/15	18/04/15	6	0	0%	0	26.25
Move North side cryostats to hall and place in position	26/03/15	21/04/15	6	0	0%	0	26.25
Reform and connect external waveguides to fit from PP to Cryostat	01/04/15	01/05/15	5	5	75%	3.75	30
Erect trellis to support external waveguides - After North PRY installation	02/04/15	02/05/15	6	0	0%	0	30
Re-install TOF2, KL, EMR	13/04/15	15/05/15	5	5	50%	2.5	32.5
Spectrometer Solenoid preparation for lattice operation	18/05/15	09/07/15	2	40	50%	20	52.5
Combined magnet operation	22/06/15	22/09/15	2	40	100%	40	92.5

- Focus Coil #1 has arrived in the hall.
- Focus Coil #2 in test position and ready for electrical hookup and cooling.
- Downstream Spectrometer Solenoid installed in R9 ready installation to the hall
- Decay Solenoid power supply operational
- Work on installing the Downstream solenoid can commence to enable early mechanical fit checks, electrical work and cooling line placement.
- For installation of the South side PRY materials the magnet can be moved offline but may need moving to a position off of the beamline
- The bellows connection between the Upstream Spectrometer Solenoid and the Focus coil has been made

*Work on the STEP V schedule is being progressed and will be presented here as soon as it is finalised.*



# MICE Critical, Imminent and Near



Project: MICE HALL INSTALLATION S  
Date: Wed 16/07/14

Legend:

- Critical Split
- Inactive Milestone
- Manual Summary
- Manual Summary Rollup
- Start-only
- Finish-only
- Critical
- Inactive Task
- Manual Task
- Manual Summary
- Imminently Critical
- Near Critical

## MICE Update

- Schedule and Milestones
  - Spectrometer Solenoid (Downstream) Installation in the hall week of the 28<sup>th</sup> July
    - Caveat any work that may need to be done in R9 related to the Helium Leak
  - Manufacture of the PRY materials is underway
    - December delivery date for South side materials
    - Important to get the south installed so that the final magnet connections can be made.
    - North side material to be delivered in January 15
  - Tracker final hook-up after the North side yoke is complete
    - Waveguide work before the upstream end (Virostek plate replacement) of the PRY is installed
  - Step IV
    - Construction complete April 2015
    - Commissioning Complete June 2016
    - User run starts March 15 – Probably miss for data taking, but will be a useful calibration run.