

Bernard Launé

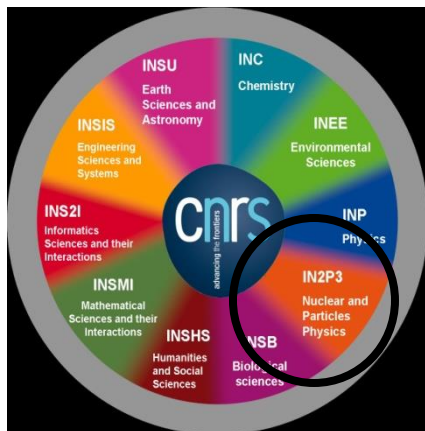


IN2P3

Institut national de **physique nucléaire**
et de **physique des particules**

FCC meeting

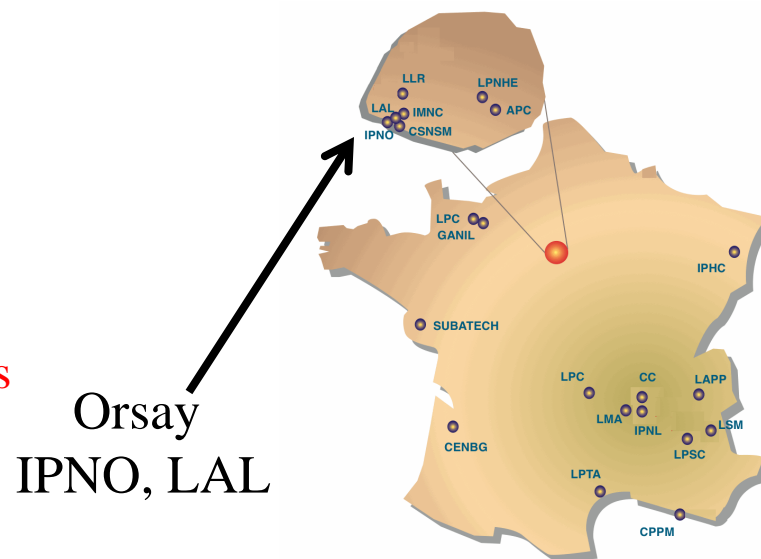
CERN, 2014, September 9-10



National Center for Scientific Research
26 000 persons

IN2P3 - Institute for Nuclear and Particle Physics (2500 FTE, 22 labs)

- Accelerators within IN2P3:
 - 6 main laboratories nationwide
 - ~280 FTE, including ~100 for machines operation



360 persons (90 researchers, Nuclear Physics)

Accelerator group (90 FTE):

R&D : SRF, RF, Cryogenics, Accelerator physics, Electronics,
Beam Diagnostics, RIB production

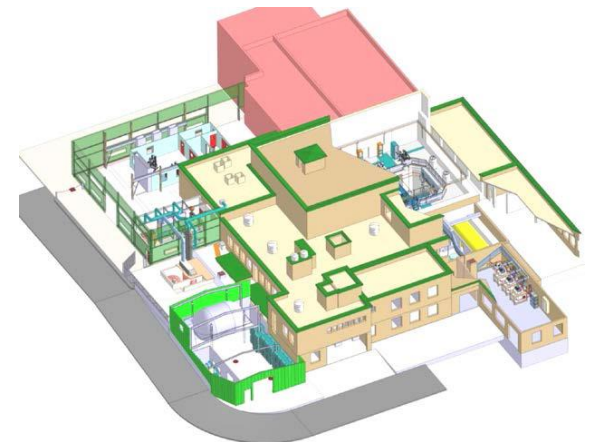
Participation to projects : SPIRAL2, Andromède, FAIR, ESS,
MYRRHA , CERN (LHC/SSS/thermometry, SPL)

ALTO : 15 MV tandem + 50 MeV e-



SupraTech

clean room, acid
station, liquefier, cryogenics, RF



300 persons (120 reseachers, Particle physics)

Accelerator group (40 FTE):

R&D : Couplers, Accelerator physics, PHIL, Compton group

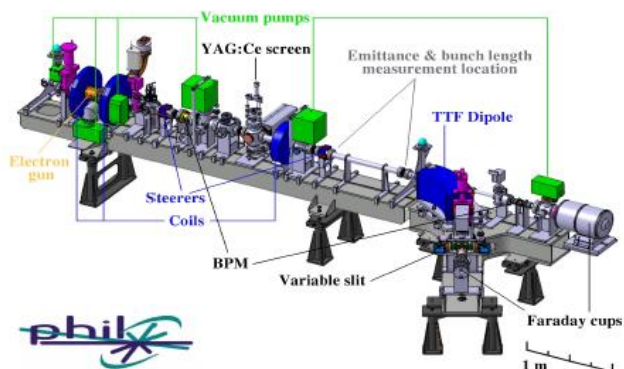
Paricipation to projects : XFEL, ThomX, ILC, CLIC, SuperB,

SuperKEKb, ATF, LHC, ELI-NP

Emerging technologies : plasma acceleration

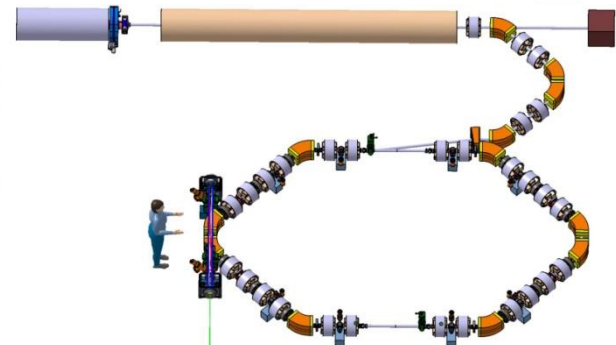
PHIL

High brilliance e- source



ThomX

Compton source



+ Couplers conditioning station

LAL and IPNO will jointly participate to EuroCirCol (Arc Design WP, 5 FTE)

- Design in Collimation Insertion Optics
- Performance Evaluation of the Collimation system
- LPSC (Grenoble) might participate to FCC on SRF
- Possible contribution in Physics WP

IN2P3 is willing to participate to FCC Studies:

- In the research core
- In the Accelerator R&D line, opportunity to improve skills
- Continue the collaboration with CERN