



The Staff Association

Speaker: Catherine Regelbrugge



Welcome to...

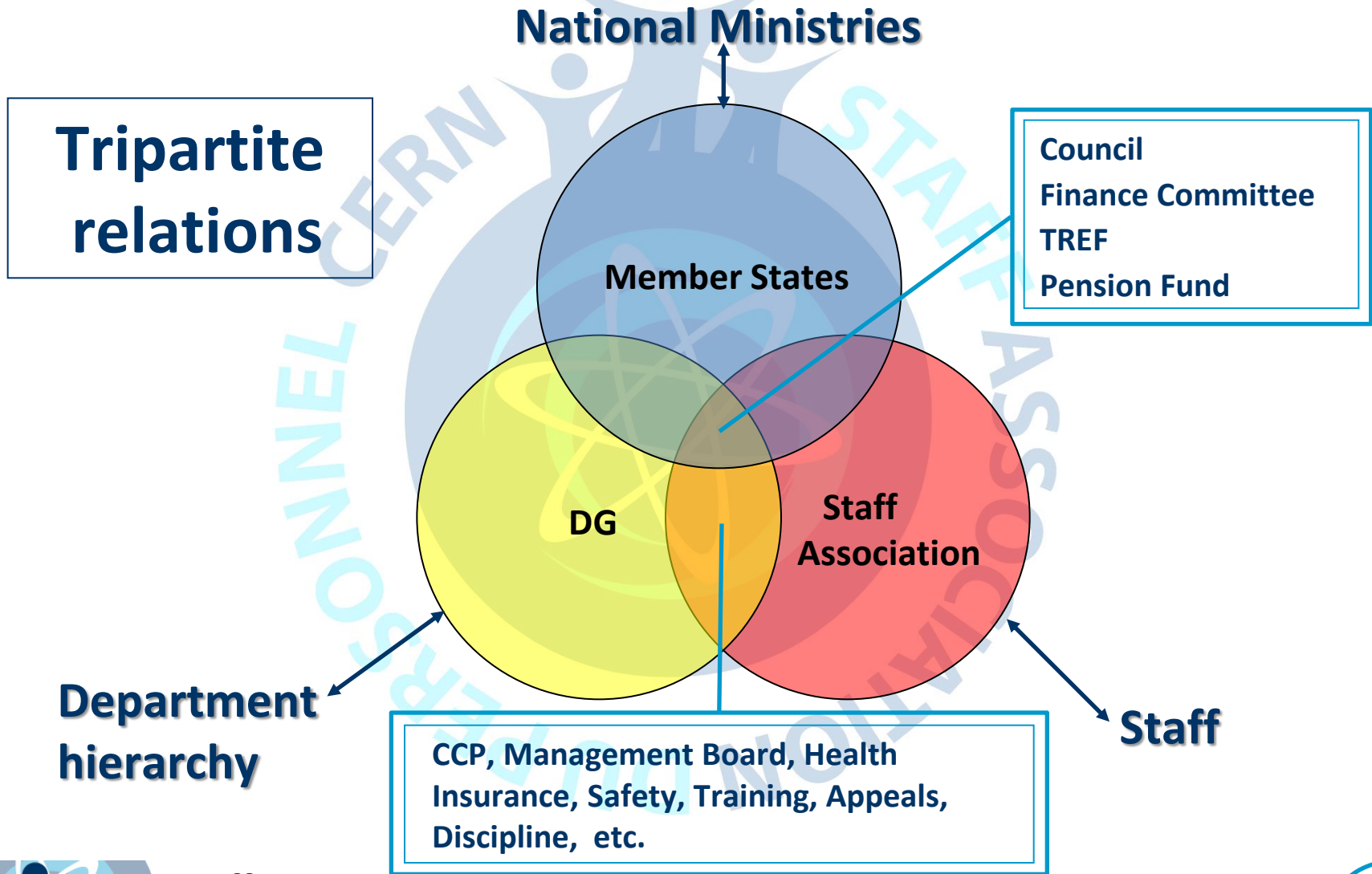
- a multinational laboratory
- a multicultural environment
- a place where science has been bringing people together since 1954

Welcome to CERN!



Employment Conditions

The players in the decision-making process



The Staff Association at CERN

Missions and mandate:

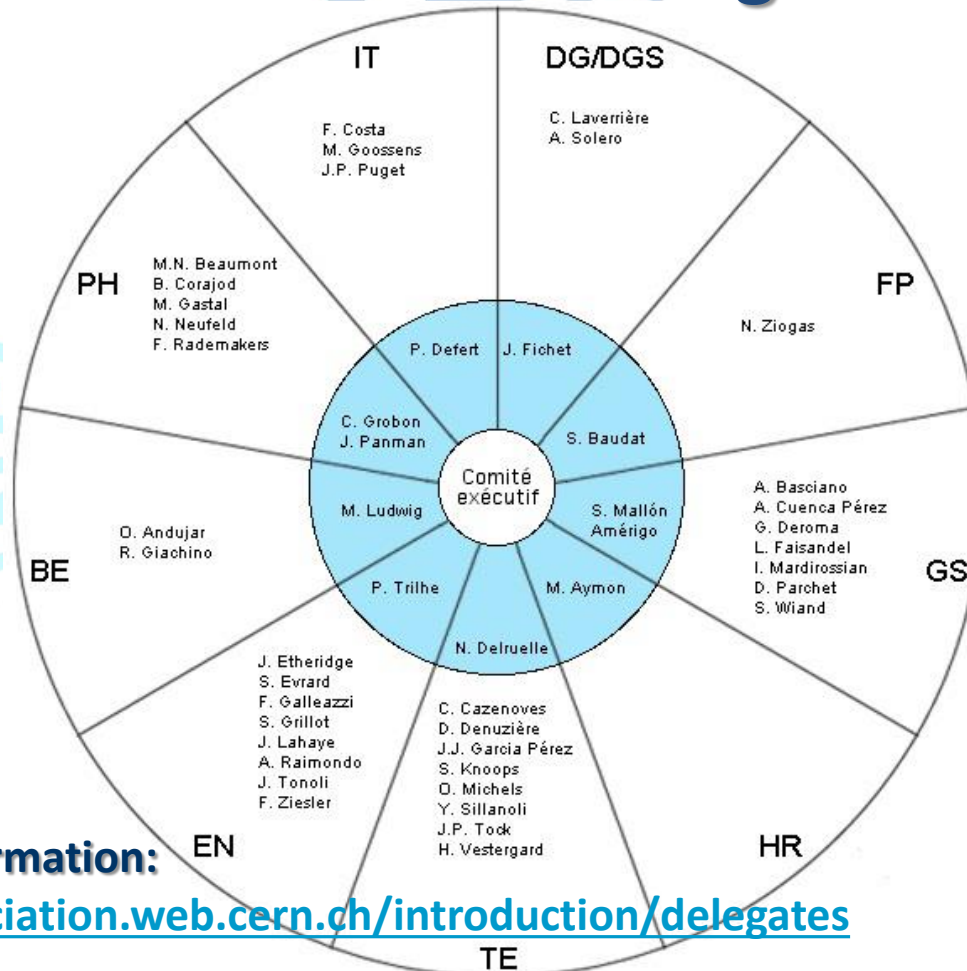
- **Represent...** collectively staff in negotiations *
- **Defend.....** employment conditions (staff & families) *
- **Offer.....** a wide choice of socio-cultural activities

* In conformity with the Staff Rules and Regulations – Chapter VII



The Staff Association at CERN

How the Staff Association is organized:



For updated information:

<http://staff-association.web.cern.ch/introduction/delegates>



The Staff Association & the Staff

- **We represent the staff on a collective basis**
- **What can we do for you on an individual basis?**

Guidance with:

- contractual issues
- interpersonal issues

...from simply listening to support with appeals

- **52 Clubs under the aegis of the Staff Association**

from A to Y: Astronomy to Yoga

- **Cultural activities on CERN site**

concerts, conferences, exhibitions...

- **Social activities on CERN site**

Nursery School, Christmas Children party, Mutual Aid Fund, Long-Term Collections



How do we inform you?

- Our twice-monthly Bulletin:



- Our staff meetings: at least once a year in autumn
- Our web site: <http://staff-association.web.cern.ch>
-  <https://www.facebook.com/StaffAssociation.Cern>
- Through your staff delegates in your department

Become a member !

- **What you should know**
 - Membership is on a voluntary basis
 - The large majority of the staff have joined the Staff Association
- **Why should you become a member?**
 - For the reasons outlined in this presentation
 - We are the legal representative of the staff on a collective basis
 - We provide services on an individual basis
 - To have access to our insurance against loss of salary
 - To benefit from our special offers (BCGE, FNAC, Aquaparc...)
- **How much does it cost?**
 - Fees: only 20 CHF/year
- **How?**
 - Fill out the form on our web site and send it back to us



Who can you contact?

- Your departmental delegates

Vos délégués / Your delegates
2014-2015



72819

74224

72761

74224

[ch](http://cern.ch)

- The Staff Association
Building 64/R-01

- Helena ZERLAU
- Catherine REGE
- Valérie DE KERI
- Stéphanie PALL

- Staff Association

[sta](http://cern.ch)



Staff
Association



Staff

ASSOCIATION du Personnel



Last Name / Nom: _____

First Name / Prénom: _____ CERN Identification: _____

Department-Group / Département-Groupe: _____ Date: _____

Membership Application

The CERN Staff Association invites all CERN's members of personnel (staff members, fellows, associates, users, ...) to become members.

I wish to join the Staff Association:

- I have taken note of the Association's Statutes and I undertake to abide by them;
- I hereby authorize yearly payment of dues by payroll deduction in January, until further notice (Staff Members only).

Statut:

Employed Members of Personnel

- Staff Members¹(IC) (0.2% of annual basic salary)
 Staff Members¹(LD) (20 CHF/Year)
 Fellows (20 CHF/Year)
 Apprentices (20 CHF/Year)

Associated Members of Personnel

- Associates (20 CHF/Year)
 Users (20 CHF/Year)
 Trainees/Students (10 CHF/Year)

¹ Currently, the contribution rate is 0.2% of annual basic salary. This rate can be modified by the General Assembly.

Signature: _____

Insurance Application

! To subscribe to the insurance against loss of salary you must be a member of the Staff Association

- I wish to subscribe to the insurance against loss of salary and thus authorize a yearly additional deduction² from my basic salary in January (Staff Members only).

Signature: _____

² Currently, the contribution rate is 0.14% of annual basic salary.

Demande d'adhésion

L'Association du personnel du CERN invite tous les membres du personnel du CERN (titulaires, boursiers, associés, utilisateurs, ...) à devenir membres.

Je souhaite devenir membre de l'Association du personnel:

- j'ai pris connaissance des Statuts de l'Association et je m'engage à les respecter;
- j'autorise par la présente le paiement annuel de la cotisation par prélèvement sur mon salaire de janvier, jusqu'à notification contraire (titulaire uniquement).

Statut:

Membres du personnel employés

- Titulaires¹(IC) (0.2% du salaire de base annuel)
 Titulaires¹(LD) (20 CHF/an)
 Boursiers (20 CHF/an)
 Apprentis (20 CHF/an)

Membres du personnel associés

- Attachés (20 CHF/an)
 Utilisateurs (20 CHF/an)
 Stagiaires/Étudiants (10 CHF/an)

¹ Actuellement, le taux de cotisation est de 0,2% du salaire de base annuel. Ce taux peut être modifié par l'Assemblée générale.

Signature: _____

Demande d'assurance

! Pour souscrire à l'Assurance perte salaire il faut être membre de l'Association du personnel

- Je souhaite souscrire l'assurance perte de salaire et autorise une déduction annuelle supplémentaire sur mon salaire de janvier pour la cotisation annuelle² à cette assurance (titulaires uniquement).

Signature: _____

² Actuellement, le taux de cotisation est de 0,14% du salaire de base annuel.

BECOME A MEMBER!

Sp

