

Current May-June-July 2008 installations:

Analog parts: **16** modules for mixed pick-ups (CERN & Uppsala BPM's and BPI's).

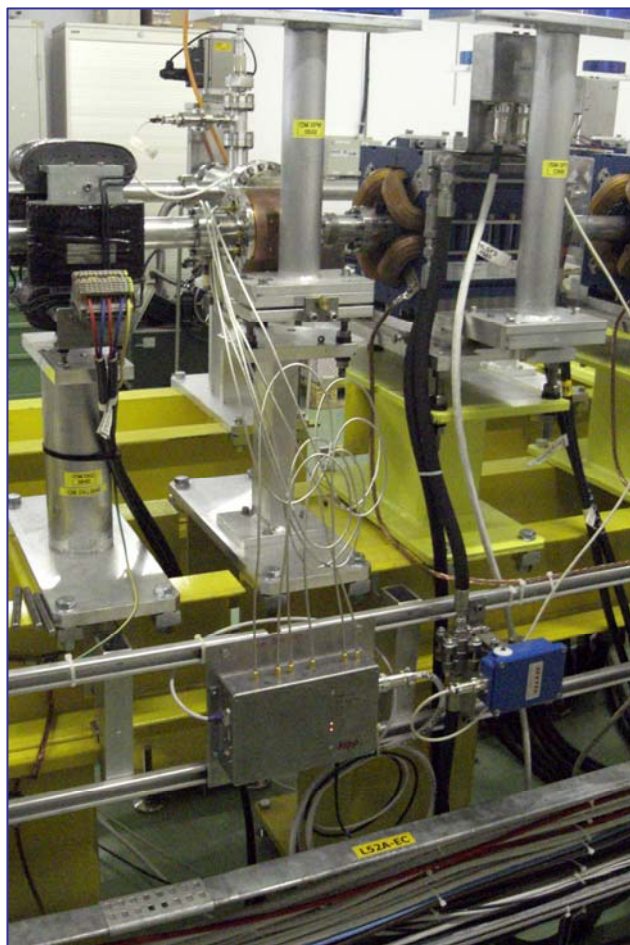
Digital FE: **30** front-end boards for mixed CERN/LAPP analog electronics.

Crates : **8** crates from Mercury to Neptune with up to 5 chained **DFE**.
1 distribution board per crate: timing, power supplies and calibrations.

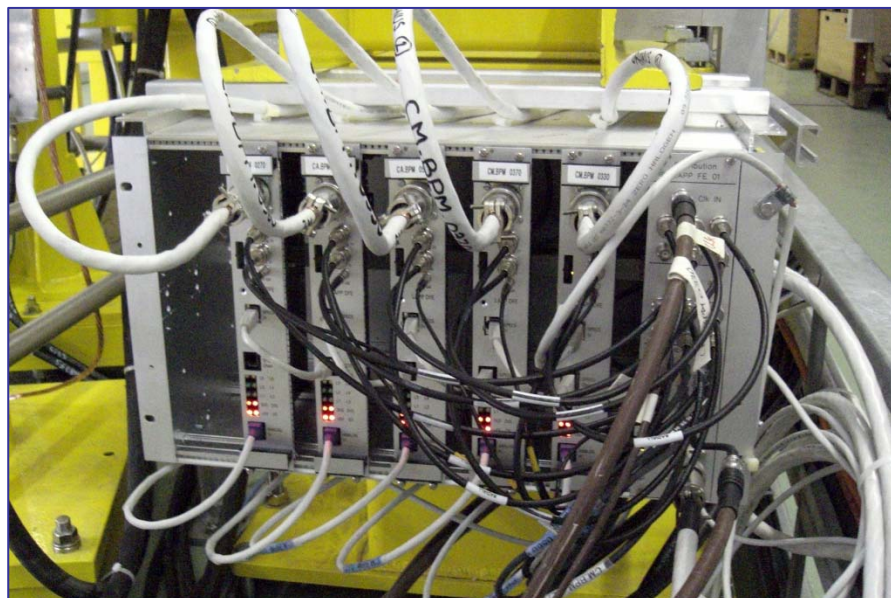
Today status:

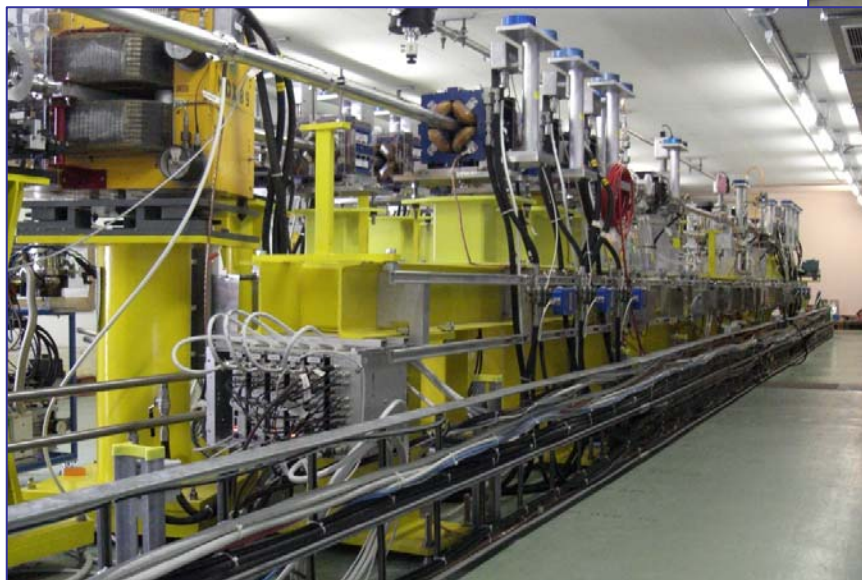
Clex: all parts installed, still some channels to be tested with calibration (full chain).

TL2: two crates installed, we wait for next week opening. Still cables, analog parts, one crate with DFE to install and test.

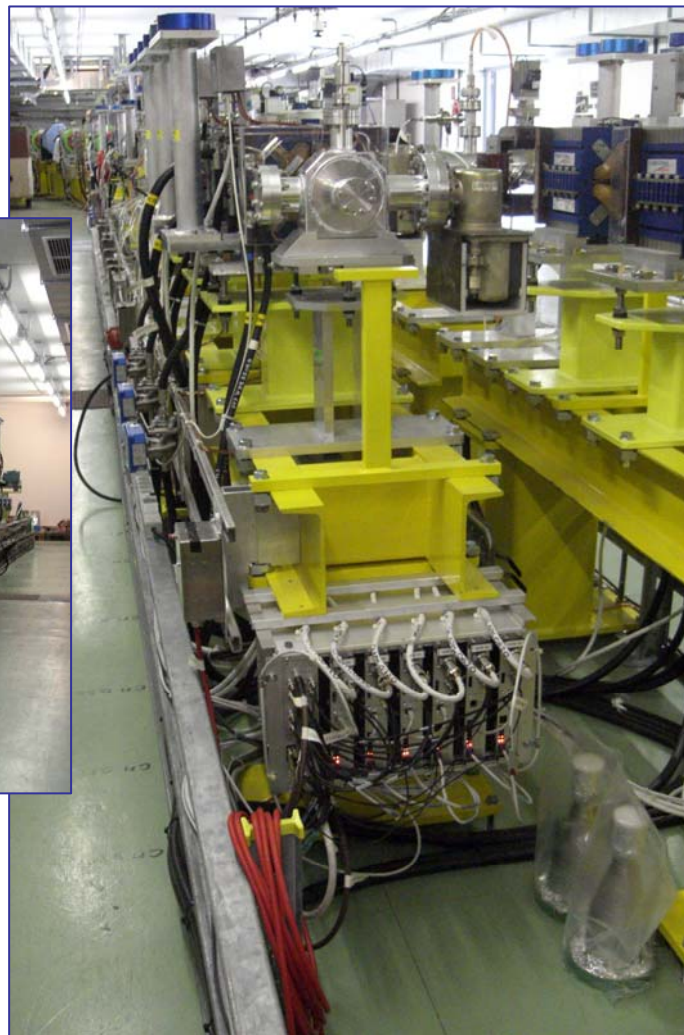


***BPM, analog and
DFE in Uranus***



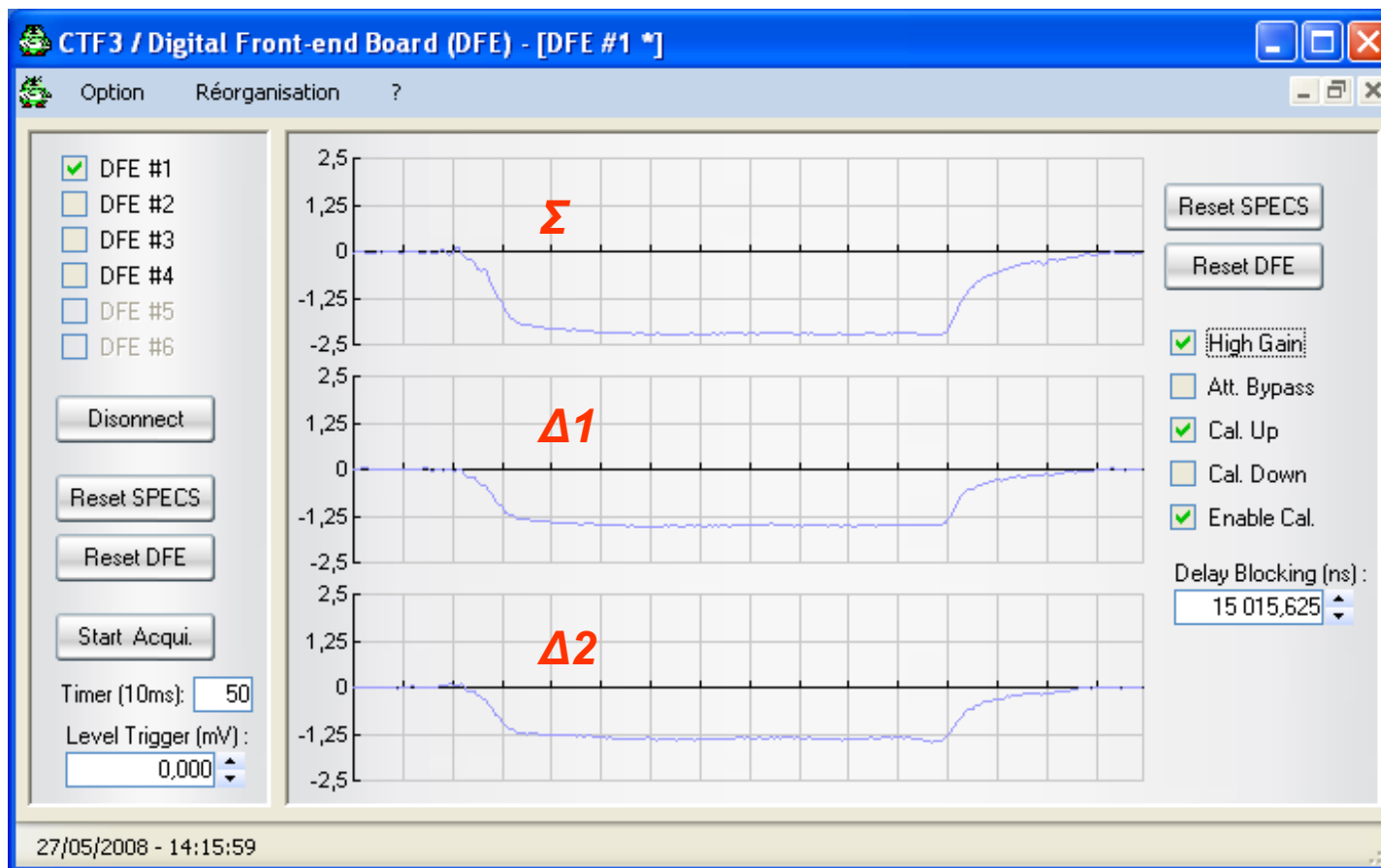


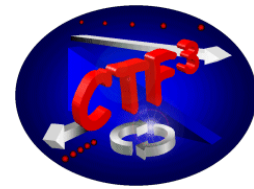
Uranus



Neptune

Sampled 3A calibration signal observed in the upstairs clex gallery with the network RJ45 100m long cable and a laptop PC (specific tests application).
BPM with LAPP analog part.





*Fesa software: finalization of the code for beginning of July.
Tests on the full chain next week for validation.*

Problem of two different timings for main beam and drive beam: currently in discussion.

*Hardware: still today only one gateway is available on the two.
We need two for the readout of all the channels.*