



WLCG Service Report

4 weeks Nov 17 – Dec 15

v1.1

WLCG Management Board, 16th Dec 2014

Maarten Litmaath
IT/SDC



Operations Coordination highlights



- Details in Ops Coord report of [Dec 10 GDB](#)
- WLCG operations [site survey](#)
- WLCG [critical services](#) review
- **Argus Future and Support** meeting [Dec 11](#)
 - See dedicated presentation in this MB
- Successful transition to the **new VOMS servers**
 - UI configurations needed to be fixed in various places
 - VOMRS to [VOMS-Admin migration](#) planned for Jan
- **Steady progress** in the various TF and WG

- **Monitoring Consolidation**
 - Successful transition to [SAM-3](#)
 - Used for A/R from now on

Selected items from operations (1/2)



- ATLAS
 - **Jamboree** Dec 3-5
 - Migrated to **Rucio** and **ProdSys2** on Dec 1
 - Further debugging and tuning ongoing
 - Lowish activity
 - Also waiting for Run 2 MC campaign SW readiness
 - **~600k** files accidentally **deleted** Nov 24-27 due to Rucio configuration issue
 - **50k** files had a single replica, ~250 datasets affected
 - **Can all be regenerated** as needed
 - Deletion activities have been **slowed down** and **carefully monitored** for a while → disks got quite full

Selected items from operations (2/2)



- LHCb **Run 1 Legacy** campaign underway
- ALICE: continuous **high activity**
- CMS: lowish activity
- CERN: communication from **SNow to GGUS** works again
 - now with TLS
- Usual best-effort **activities** foreseen during the **end-of-year break**



Service incident reports

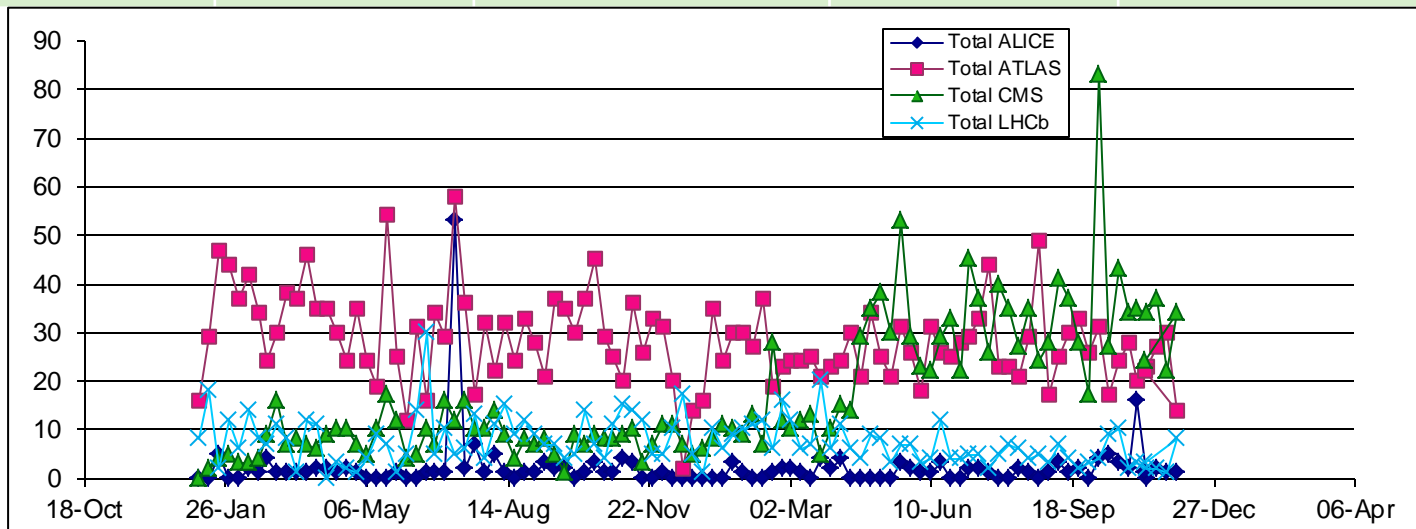
<https://twiki.cern.ch/twiki/bin/view/LCG/WLCGServiceIncidents>

- IN2P3
 - Network incident affected all VOBOXes
 - ~1700 ALICE jobs were lost

GGUS summary (4 weeks 17/11/14 -14/12/14)

by Pablo Saiz

VO	User	Team	Alarm	Total
ALICE	5	0	0	5
ATLAS	32	71	0	103
CMS	115	2	0	117
LHCb	1	13	0	14
Totals	153	86	0	239



Significant events

- GGUS release on 10th December
 - Prefixing EGI support units with EGI
 - Changes for other VOs
 - Next release scheduled for 28th January
- **No real alarms** during this period



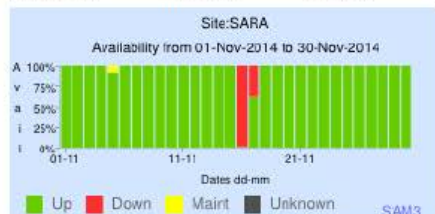
Availability of WLCG Tier-0 + Tier-1 Sites

ALICE

November 2014

Target Availability for each site is 97.0%. Target for 8 best sites is 98.0%

Availability Algorithm: CREAM-CE + ARC-CE





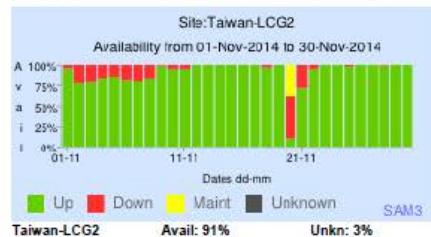
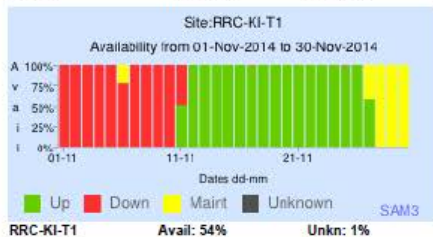
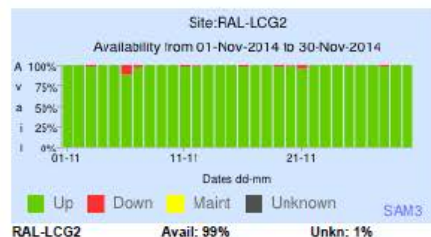
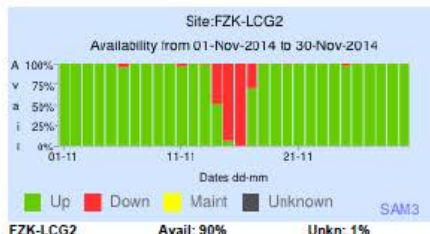
Availability of WLCG Tier-0 + Tier-1 Sites

ATLAS

November 2014

Target Availability for each site is 97.0%. Target for 8 best sites is 98.0%

Availability Algorithm: $(\text{OSG-CE} + \text{CREAM-CE} + \text{ARC-CE}) * (\text{all SRMv2} + \text{all OSG-SRMv2})$





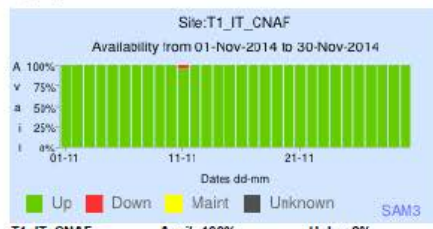
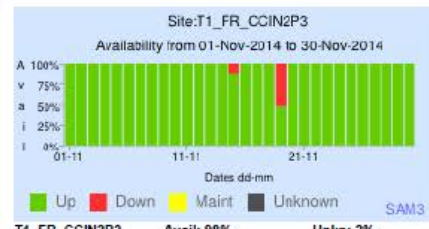
Availability of WLCG Tier-0 + Tier-1 Sites

CMS

November 2014

Target Availability for each site is 97.0%. Target for 8 best sites is 98.0%

Availability Algorithm: (OSG-CE + CREAM-CE + ARC-CE) * (all SRMv2 + all OSG-SRMv2)





Availability of WLCG Tier-0 + Tier-1 Sites

LHCb

November 2014

Target Availability for each site is 97.0%. Target for 8 best sites is 98.0%

Availability Algorithm: (CREAM-CE + ARC-CE) * all SRMv2



LCG.CERN.ch Avail: 96% Unkn: 0%



LCG.CNAF.it Avail: 100% Unkn: 0%



LCG.GRIDKA.de Avail: 100% Unkn: 0%



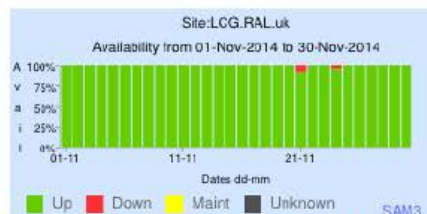
LCG.IN2P3.fr Avail: 100% Unkn: 2%



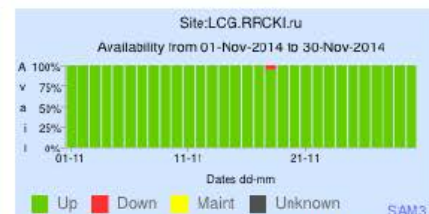
LCG.NIKHEF.nl Avail: 100% Unkn: 0%



LCG.PIC.es Avail: 100% Unkn: 0%



LCG.RAL.uk Avail: 100% Unkn: 0%



LCG.RRCKL.ru Avail: 100% Unkn: 0%



LCG.SARA.nl Avail: 95% Unkn: 0%