

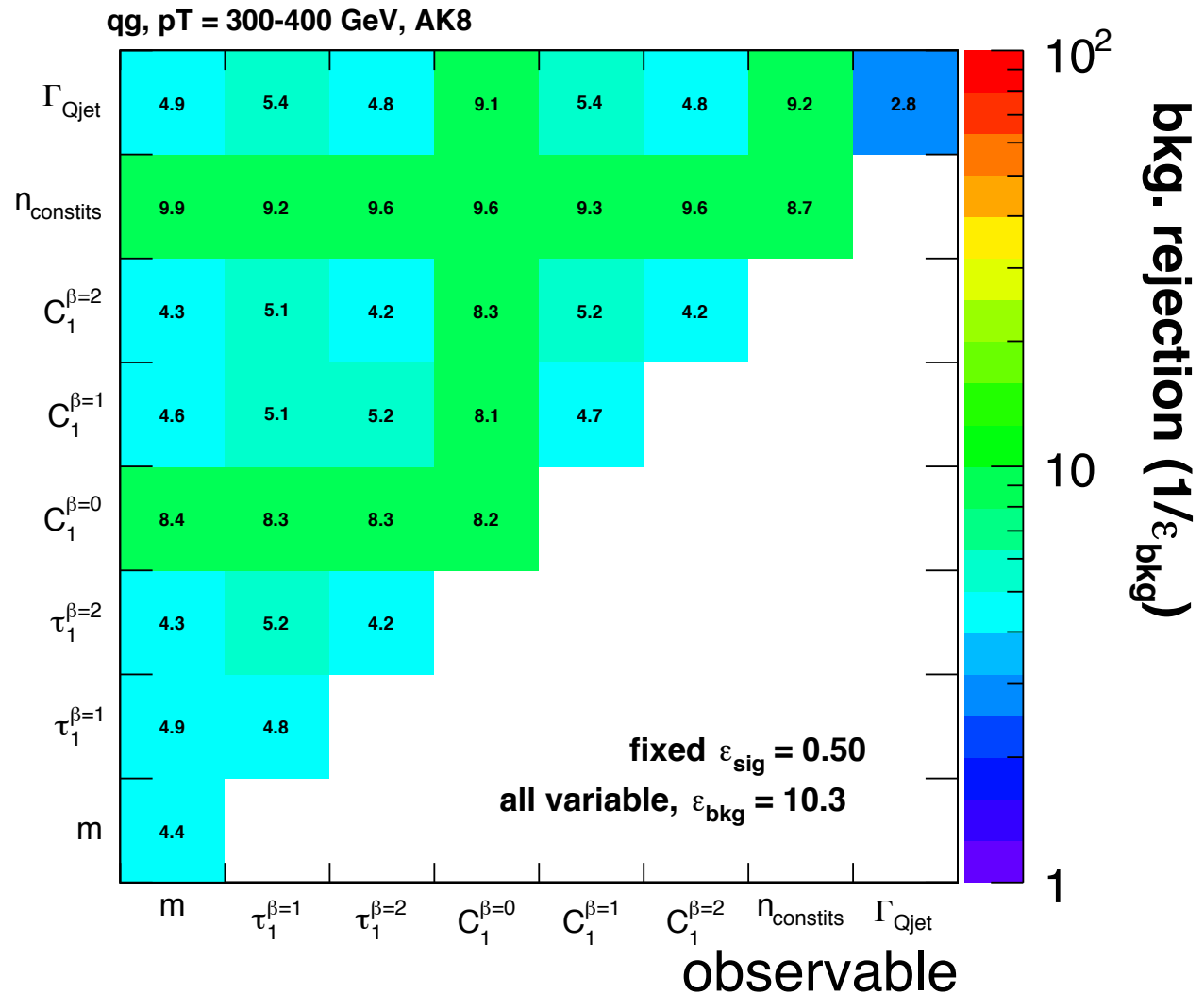
# q/g Tagging

$R=0.8,$   
 $p_T$  300-400 GeV

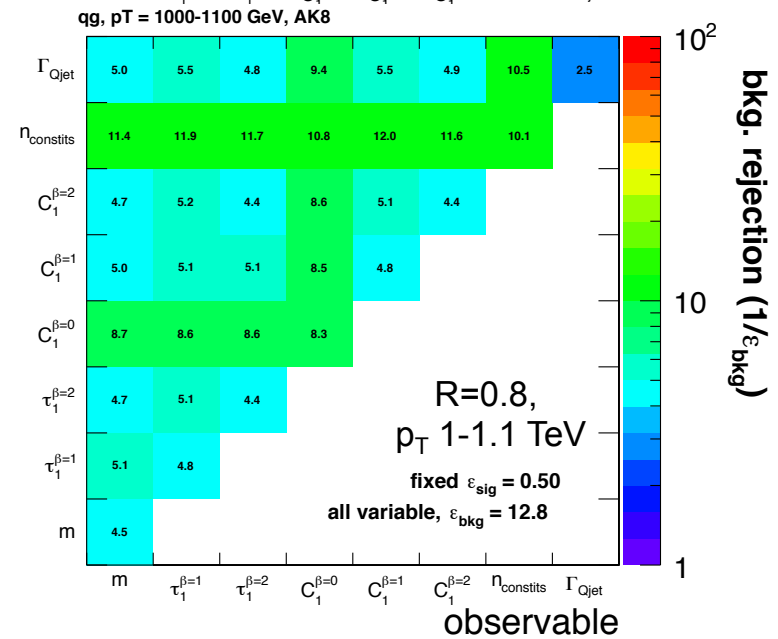
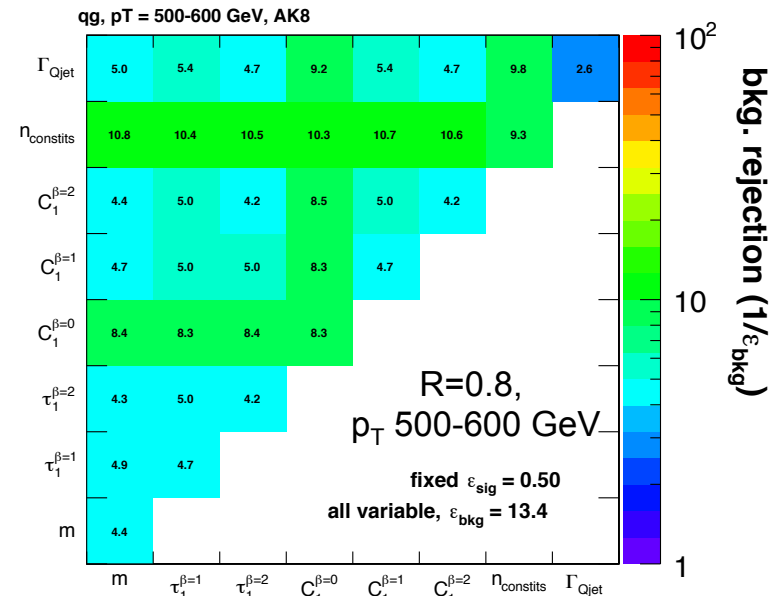
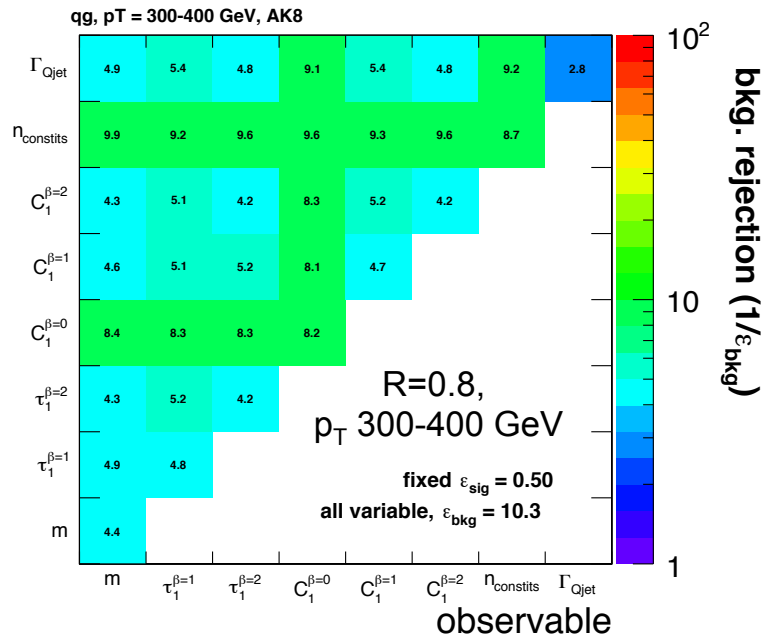
$C_1^{B=0}$  and  $n_{constits}$  the most performant, but considerable overlap between the two.

Very little complementary information beyond  $n_{constits}$ .

“allvar” very close to the combined two-variable performance.

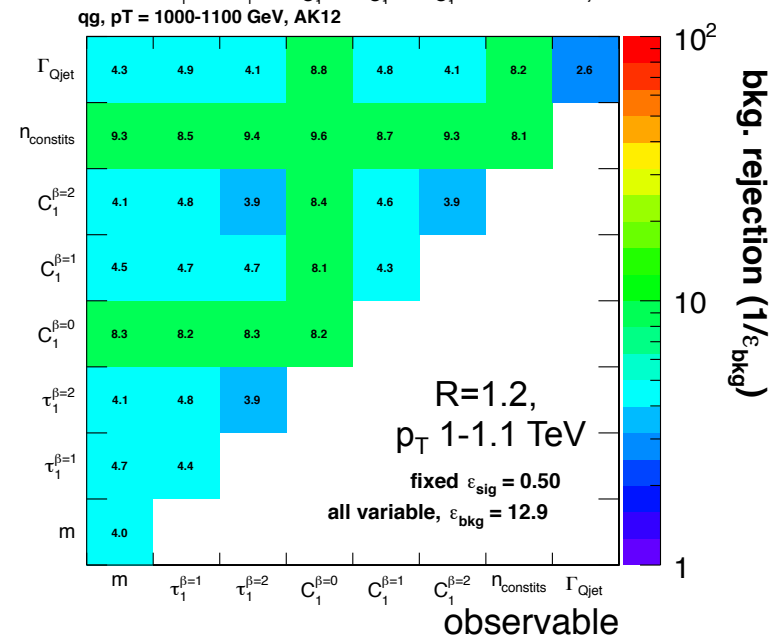
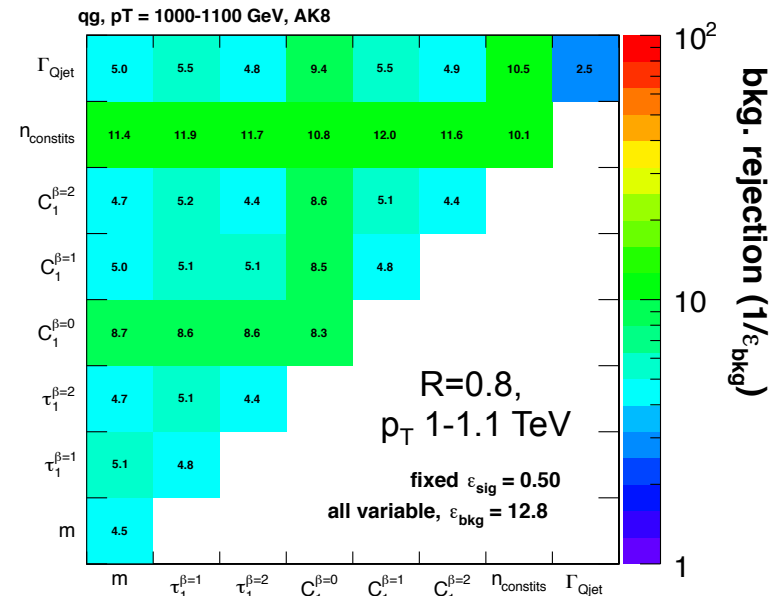
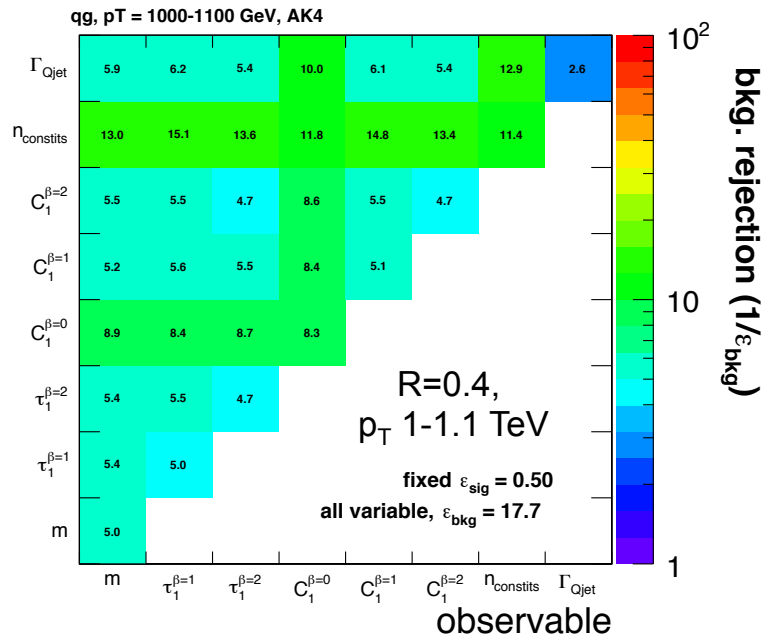


# Dependence on $p_T$



Performance very independent of  $p_T$   
(to within  $\sim 15\%$ )

# Dependence on R



- Performance markedly better for smaller radius.
  - Also see more complementarity.
- We should add R=0.4 to the 300 and 500 bins.