

CORSIKA modification for rigidity dependent primary selection based on geomagnetic cut-off rigidity for GRAPES-3 simulations

B. Hari Haran^{a,b}, AHMAD Shakeel^{a,c}, CHANDRA Anuj^{a,b}, DUGAD Shashi R^{a,b}, GUPTA Sunil K^{a,b}, HAYASHI Yohio^{a,d}, JAIN Atul^{a,b}, KAWAKAMI Saburo^{a,d}, MOHANTY Pravata K^{a,b}, OSHIMA Akitoshi^{a,e}, P. Jagadeesan^{a,b}, RAO B Srinivasa^{a,b}

^aGRAPES-3 Experiment, Cosmic Ray Laboratory, Ooty 643 001, India.

^cDepartment of Physics, Aligarh Muslim University, Aligarh 202002, India.

^eChubu University, Engineering Science Laboratory, Kasugai-shi, Aichi 487-8501, Japan.

E-Mail : 89hariharan@gmail.com

^bTata Institute of Fundamental Research, Homi Bhabha Road, Mumbai 400 005, India.

^dGraduate School of Science, Osaka City University, Osaka 558-8585, Japan.

Abstract

For the analysis of the GRAPES-3 muon data, large scale Monte Carlo simulations are required. These simulations are performed using the CORSIKA simulation package developed by the KIT group. However, the geomagnetic cut-off rigidity at a given location varies with direction, and therefore, a constant threshold for selection of primary energy results in generation of a large number of events that are subsequently rejected due to their rigidity being below the cut-off value for that direction. We have implemented an efficient mechanism in CORSIKA to select only those primary cosmic rays that lie above the cut-off rigidity in a given direction resulting in rejection of the primary cosmic rays that would have otherwise been rejected subsequently. Results based on actual simulations of GRAPES-3 muon data have shown that by using this rigidity based cut, the actual computation time was reduced by a factor of two without affecting the final results.

1. Introduction

The simulations for GRAPES-3 data analysis were optimized by introducing a rigidity based cut in the CORSIKA package [1]. This modification selects only those primary particles that are required for GRAPES-3 simulation. Since this selection happens before the simulation process starts, simulation of unwanted primaries which would have been subsequently rejected, is avoided. This real-time selection is based on pre-calculated cut-off rigidities for field of view at GRAPES-3 location. No change in physics results were observed with this modified version of CORSIKA when compared with the results obtained using the original code.

2. GRAPES-3 muon telescope

A large area (560 m²) muon tracking detector of the GRAPES-3 experiment [2], operating at Ooty, India has been designed to study high energy cosmic ray astrophysics. The muon detector is used to differentiate primary gamma rays from charged cosmic rays and to obtain cosmic ray composition, and probe various solar phenomena.

The GRAPES-3 muon detector uses proportional counter (PRC) as basic element. Each PRC is 600 cm long, 10 cm X 10 cm cross section with a wall thickness of 2.3 mm. A muon detector module consists of 232 PRCs arranged in 4 layers, with alternate layers placed in mutually orthogonal directions which gives an sensitive area of 35 m². Two successive layers of PRCs are separated by 15 cm thick concrete. The muon detector permits a two-dimensional reconstruction of muon tracks in two vertical, orthogonal planes. The vertical separation of two layers of PRCs in the same plane is 50 cm which allows the muon track direction to be measured to an accuracy of 6° in the projected plane. To achieve an energy threshold of 1 GeV for vertical muons, a total thickness ~550 g cm⁻² in the form of concrete blocks of 2.4 m thickness is used as absorber. The concrete blocks have been arranged in the shape of an inverted pyramid to achieve an energy threshold of 1 (sec θ) GeV for muons incident at a zenith angle θ (with coverage up to 45°). Four muon detector modules form a super-module.

3. GRAPES-3 simulations

GRAPES-3 muon telescope records 4x10⁹ muons everyday. These muons are recorded in 225 angular bins. For a comparative study of these muons, billions of cosmic rays showers need to be generated using Monte Carlo programs to obtain secondary muon information. These simulations require a long time to complete with presently available computing power. Therefore, an efficient scheme to minimize simulation time is an essential requirement of every experiment. The GRAPES-3 experiment is sensitive to cosmic rays of energies from 10 GeV to 10 TeV. But the energy threshold is direction dependent and changes due to geomagnetic effects that are explained in the subsequent section.

4. Geomagnetic cut-off rigidity

The charged particles originating from outside the Earth's magnetosphere are deflected by the Lorentz force. Thus, the ability of a particle to penetrate the geomagnetic field depends upon the magnetic rigidity (R) which is defined as particle momentum (pc) per unit charge (q).

$$R = \frac{pc}{q} (GV)$$

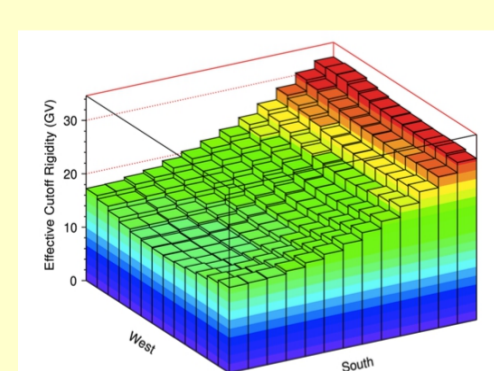


Fig-1 cut-off rigidity 3D map

Rigidity R is a useful parameter to describe the motion of charged particles in the geomagnetic field. For any point in the magnetosphere, a minimum rigidity called cut-off rigidity defines the threshold to reach that point. Particles with rigidity lower than the cut-off rigidity will be deflected back into space, whereas particles above the cut-off rigidity will reach that point. The cut-off rigidity map for GRAPES-3 location is given in Fig-1. The angular variation of cut-off rigidity can be seen clearly.

5. CORSIKA modifications for primary selection

We have used officially released CORSIKA v7.4000 for our modification. CORSIKA program flow and the modifications are shown in Fig-2. A look-up table was created for cut-off rigidity values for GRAPES-3 location using IGRF-11 model [3] with zenith ranges from 0-60° and azimuth ranges from 0-360° in 1° bin width. After the initialisation of CORSIKA variables, we have introduced few more variables which do not affect the final outcome. A look-up table containing geomagnetic cut-off values is loaded into the CORSIKA memory. After the primary parameters (energy, direction) are calculated in CORSIKA with modified code which validates the generated primary passes the cut-off rigidity in that direction. If the validation is met then only the primary can undergo for normal CORSIKA process or else it will be rejected there itself.

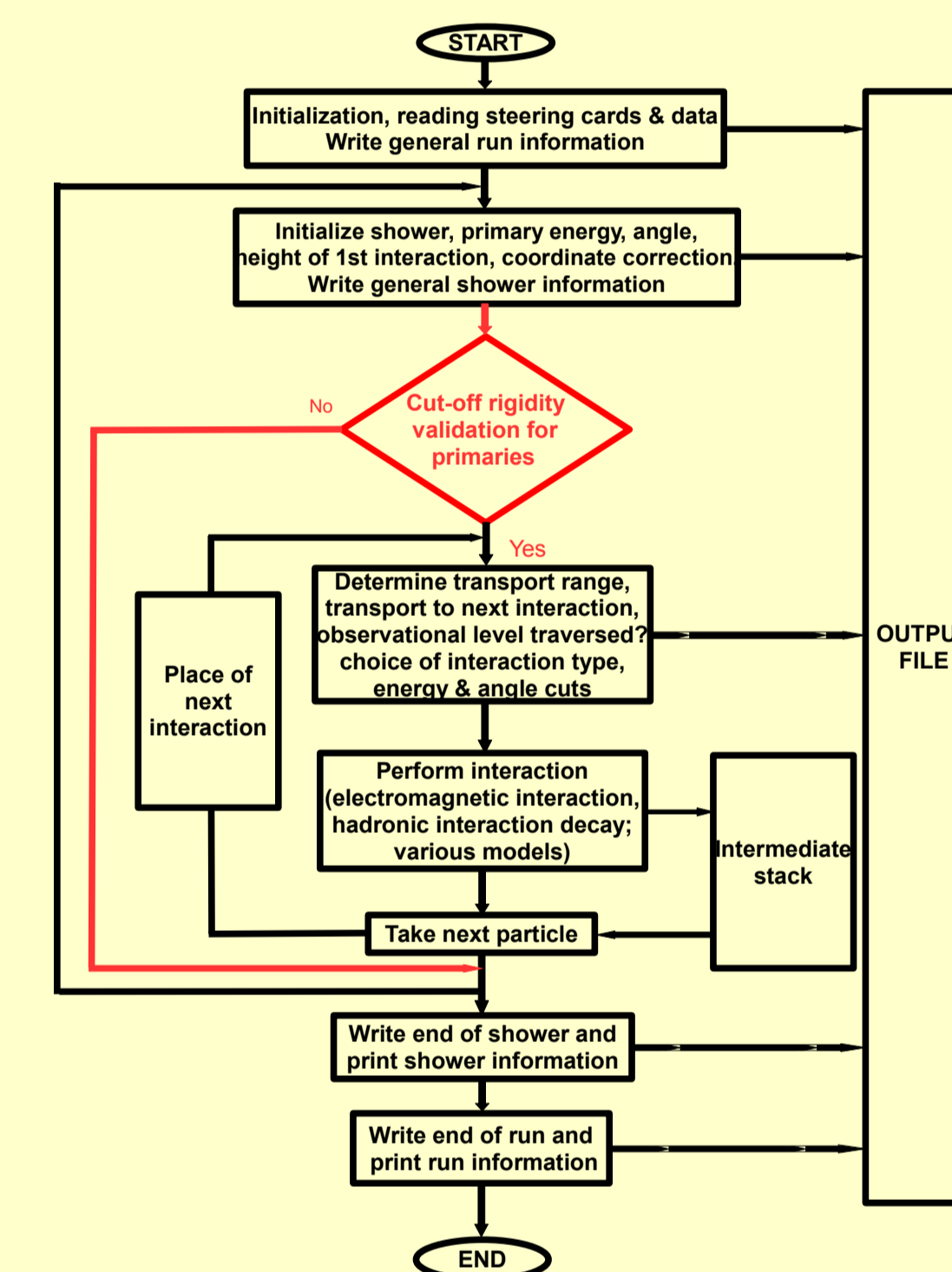


Fig-2 CORSIKA Program flow Modified program flow

6. Results

In earlier procedure, the primary particles were generated and the shower selection was done offline which resulted in significant computing resources being wasted. For this purpose, SIBYLL [4,5] and Gheisha [6] models were used to generate 10⁵ proton showers with zenith angle range 0-60° and azimuthal range 0-360°. The results of these simulations are listed in Table-1 which shows that only 37% of the simulated showers are useful. Remaining showers that did not pass the cut-off rigidity condition had to be rejected. By using the rigidity dependent cut the computing time was reduced by a factor ~2 and the size of the output file was also reduced by a factor ~3. The primary energy spectrum from the simulated showers is shown in Fig-3.

PARAMETERS	WITHOUT MODIFICATION	WITH MODIFICATION
Total run time (Sec)	2424	1238
DATnnnnnn (MByte)	239	100
DATnnnnnn.long (MByte)	950	357
Events generated	100000	36940

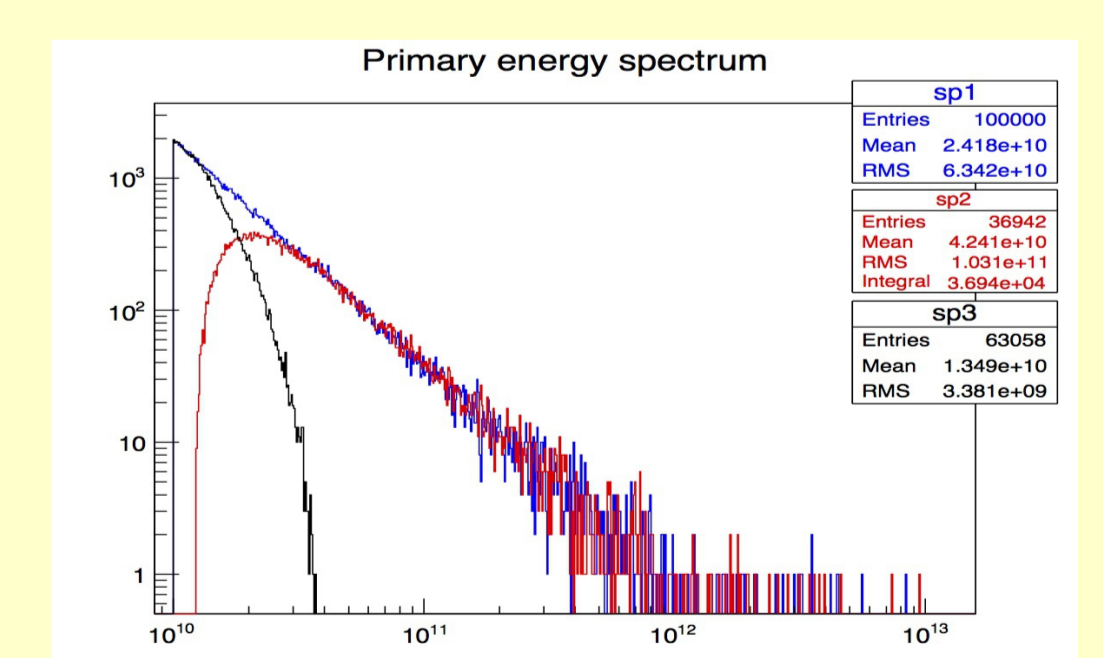


Fig-3 Primary energy spectrum
Total showers
Simulated showers
Rejected showers

Table-1 Results of modification, Parameters compared with original code

References

- [1] Heck, D. et al.. CORSIKA: A Monte Carlo Code to Simulate Extensive Air Showers, FZKA Report 6019.
- [2] Y. Hayashi et al. Nucl. Instrum. and Methods A 545 (2005) 643-657.
- [3] International Geomagnetic Reference Field: the eleventh generation, DOI:10.1111/j.1365-246X.2010.04804.x
- [4] R.S. Fletcher, T.K. Gaisser, P. Lipari, and T. Stanev, Phys. Rev. D50 (1994) 5710; J. Engel, T.K. Gaisser, P. Lipari, and T. Stanev, Phys. Rev. D46 (1992) 5013.
- [5] R. Engel, T.K. Gaisser, P. Lipari, and T. Stanev, Proc. 26th Int. Cosmic Ray Conf., Salt Lake City (USA), 1 (1999)415; E.-J. Ahn, R. Engel, T.K. Gaisser, P. Lipari, and T. Stanev, Phys. Rev. D80 (2009) 094003; R. Engel, private communications.
- [6] H. Fesefeldt, Report PITHA-85/02 (1985), RWTH Aachen, available from: <http://cds.cern.ch/record/162911/files/CM-P00055931.pdf>