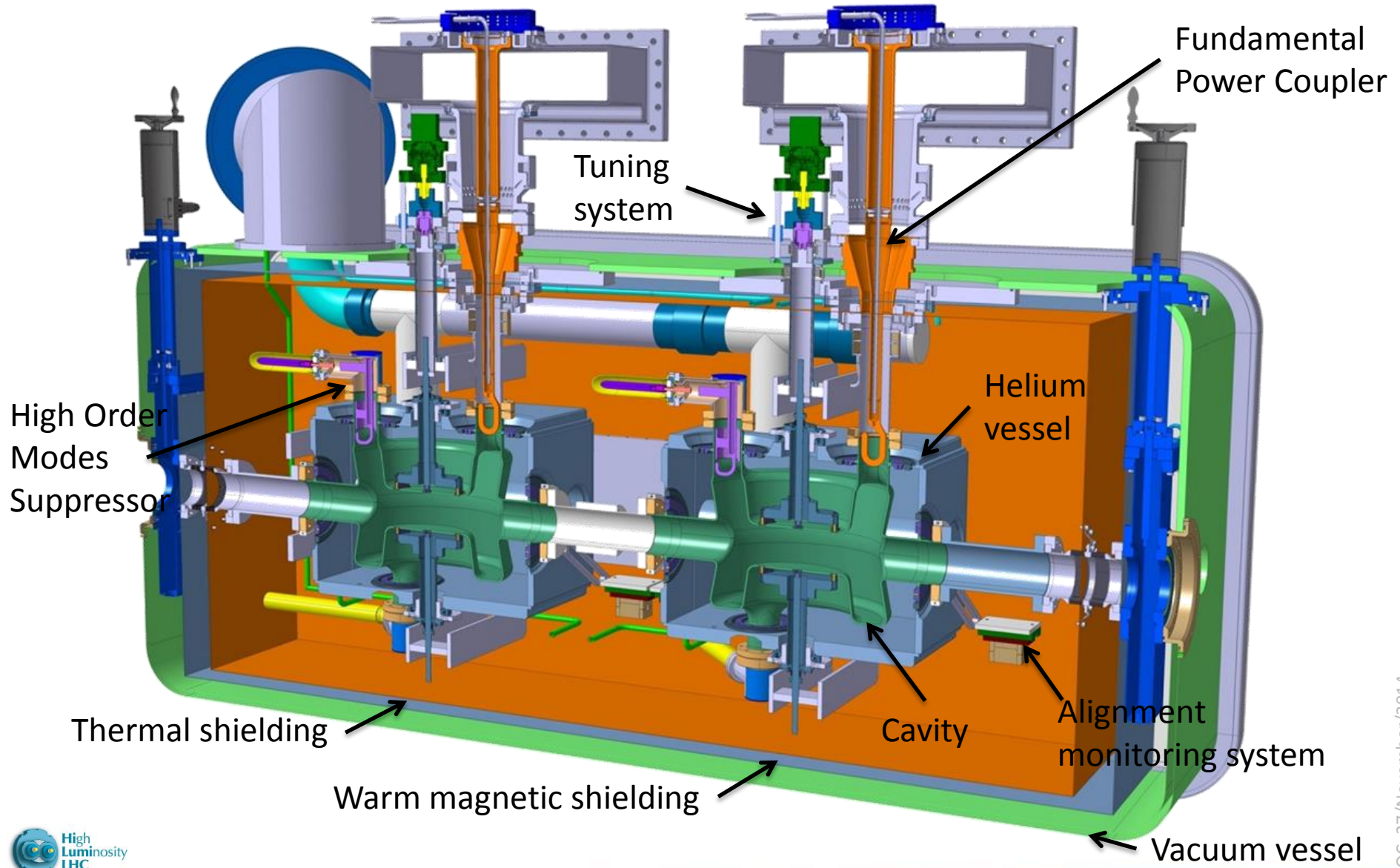


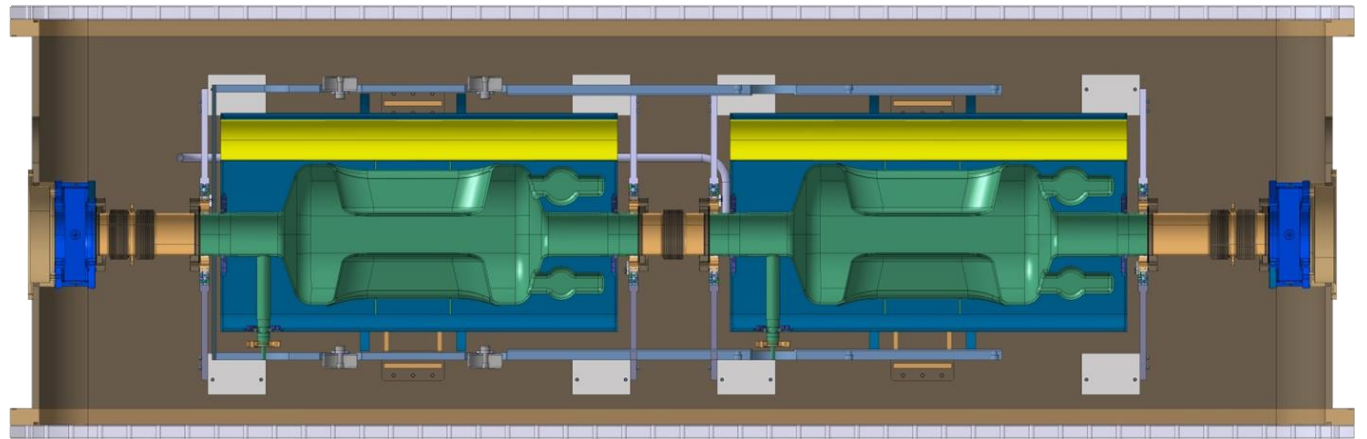
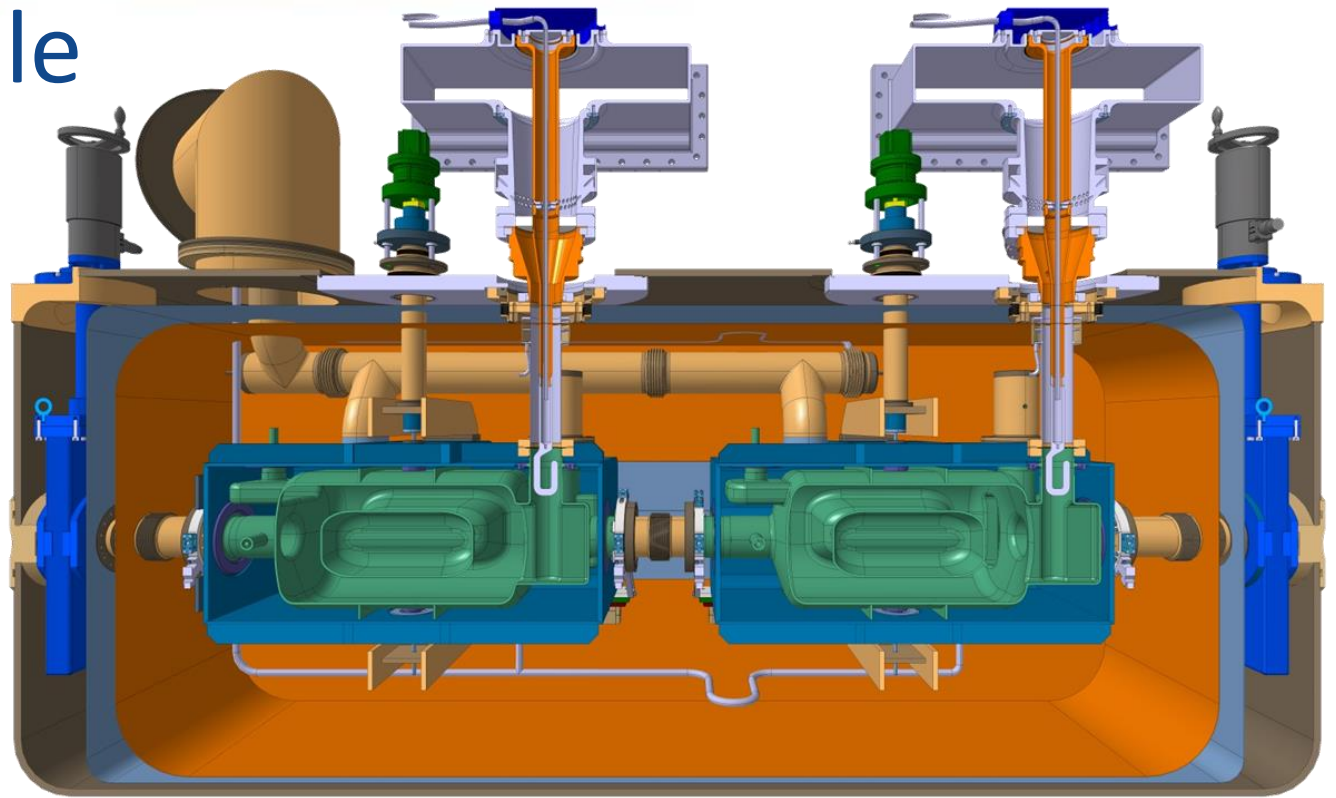
Cryomodule

Cryomodule with DQW cavities



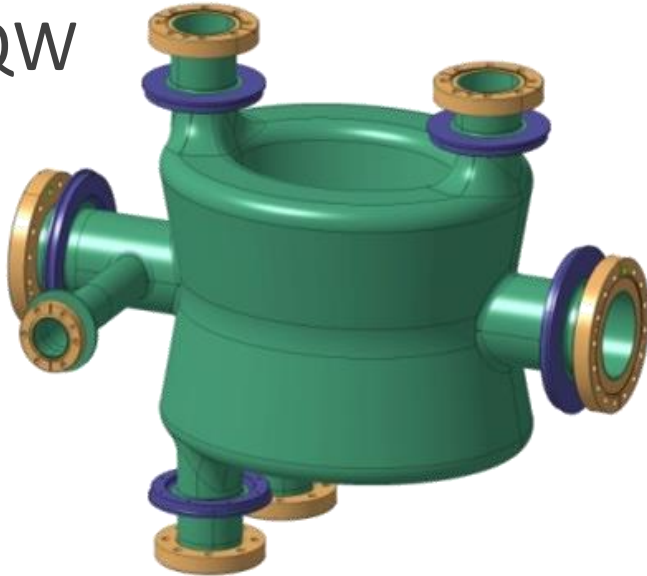
Cryomodule

Cryomodule
with RFD
cavities

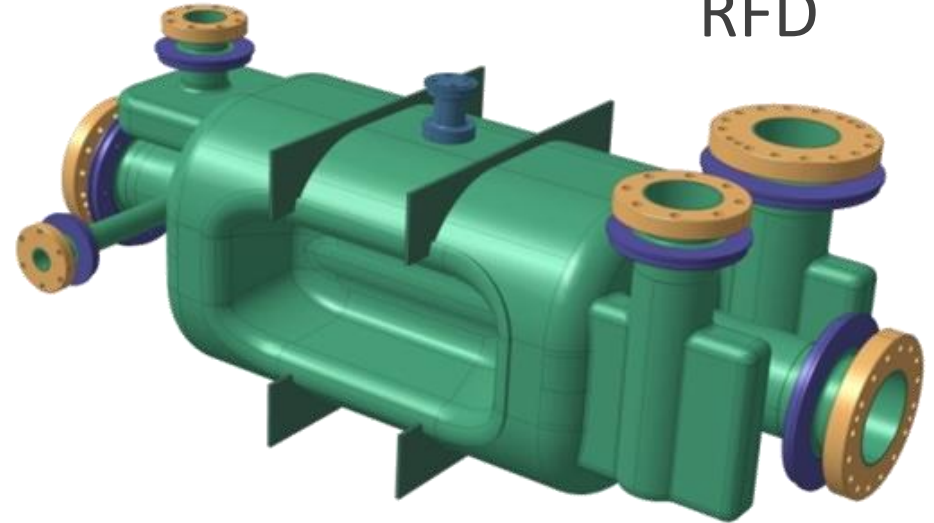


Bare cavities

DQW



RFD

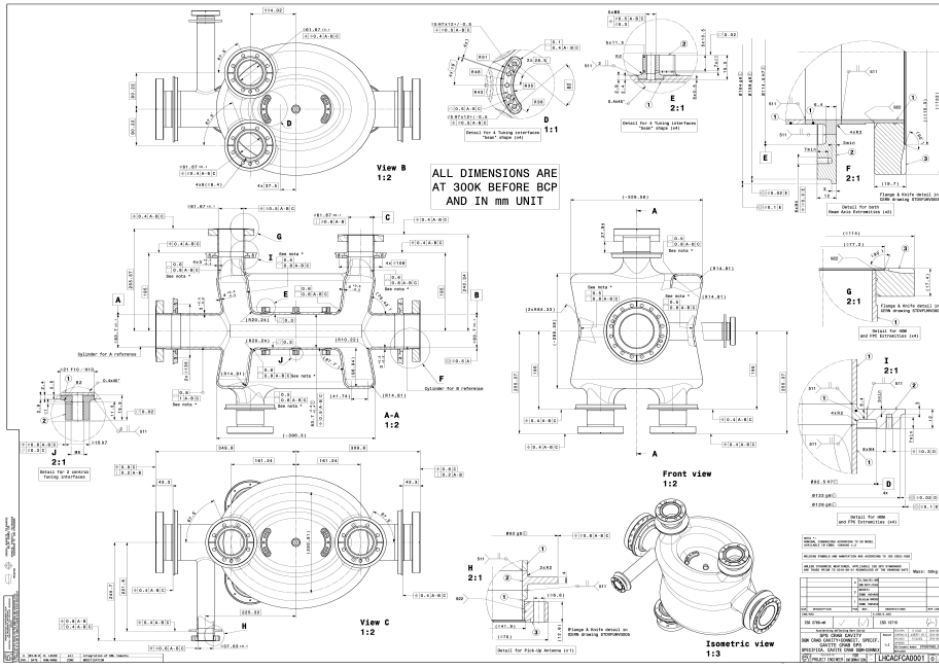
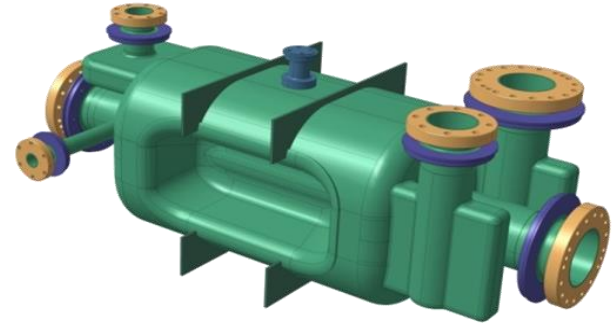


Engineering specification

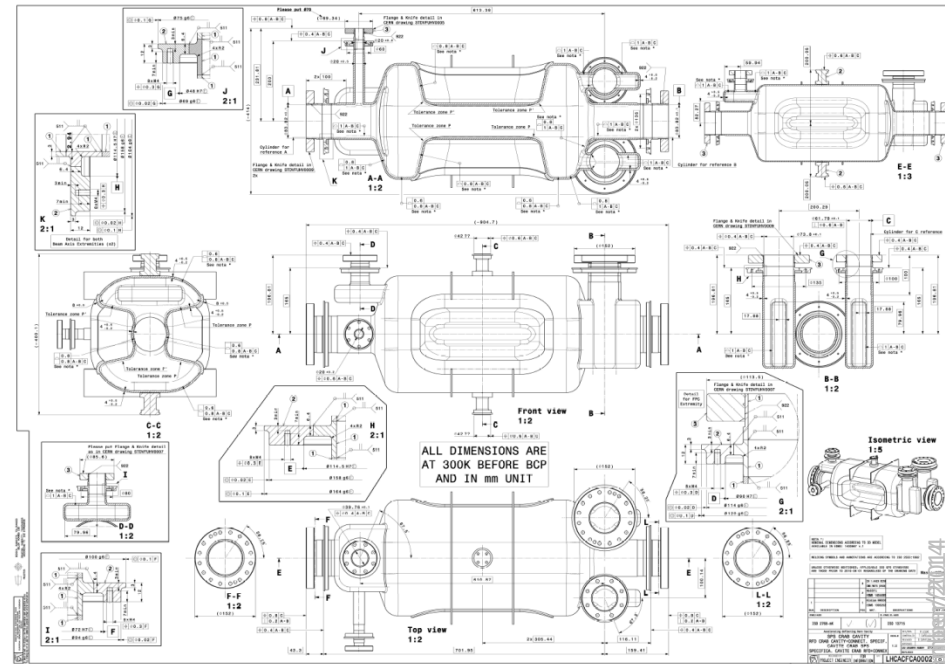
EDMS 1389669 "Engineering Specification for the dressed bulk niobium Crab Cavities"

Manufacturing of cavities launched with Niowave in July

Bare cavities



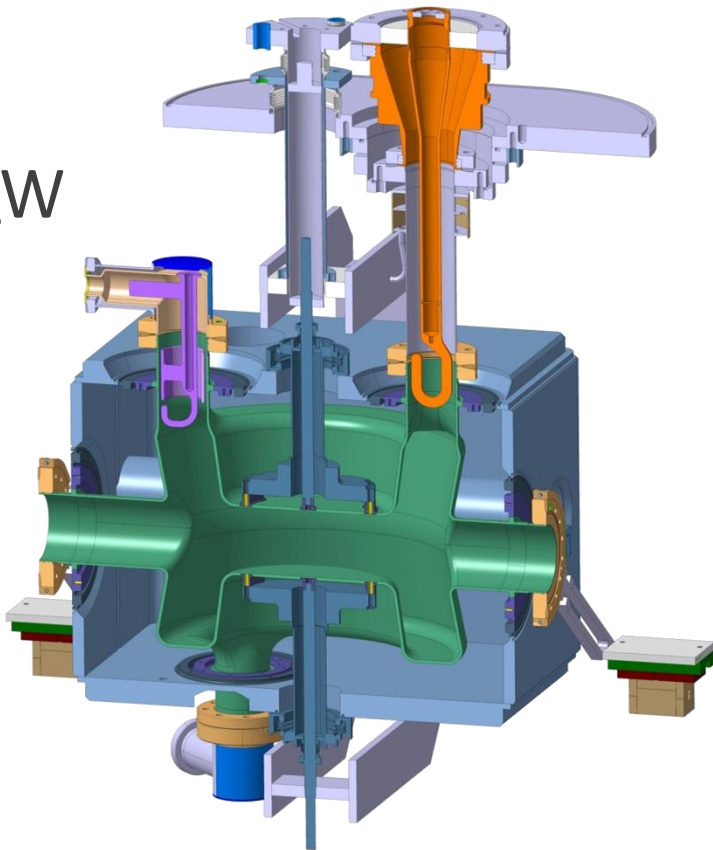
DQW Specification drawing – LHCACFA0001



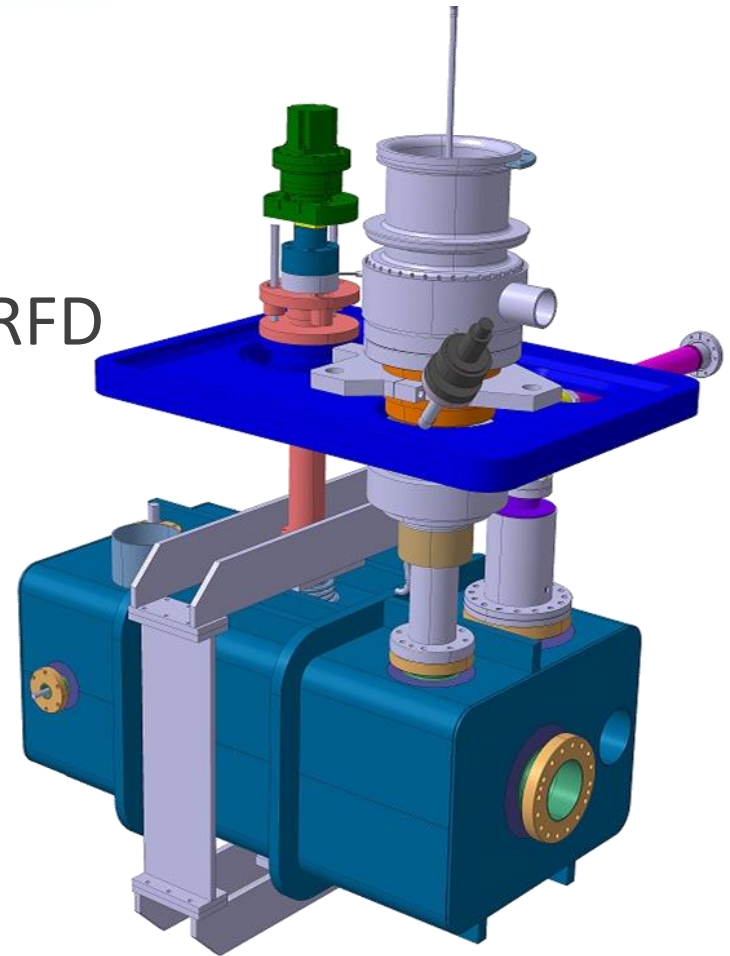
RFD Specification drawing – LHCACFA0002

Dressed cavities

DQW



RFD

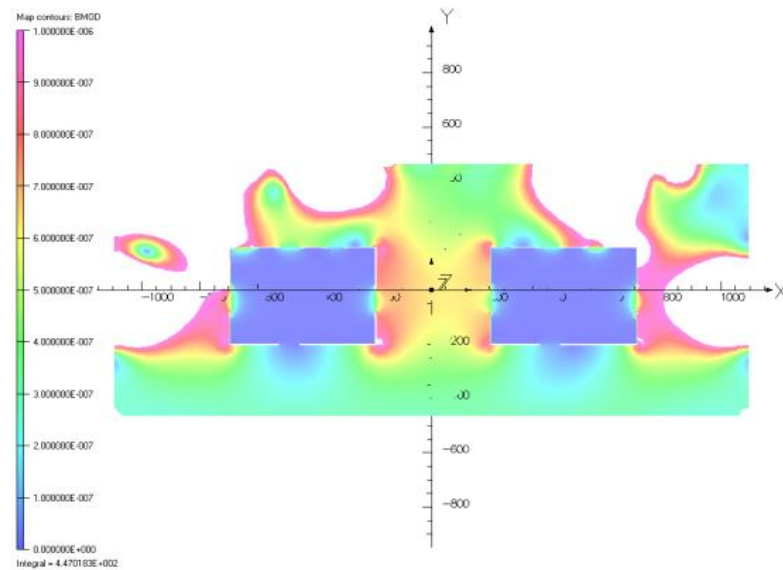
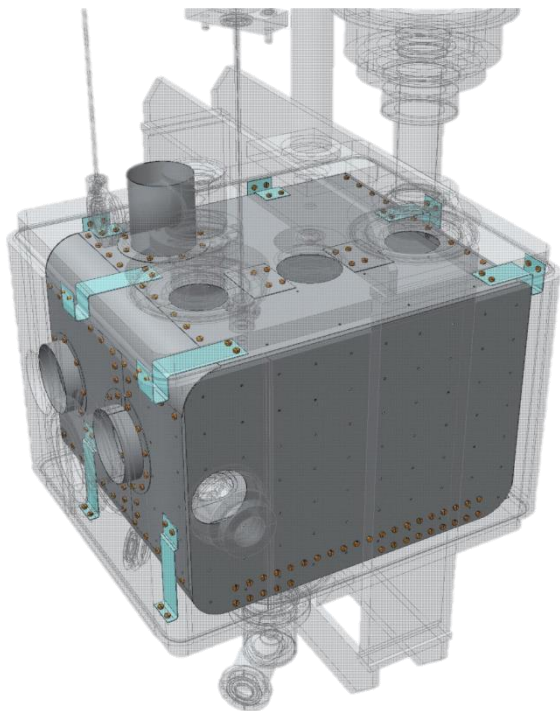
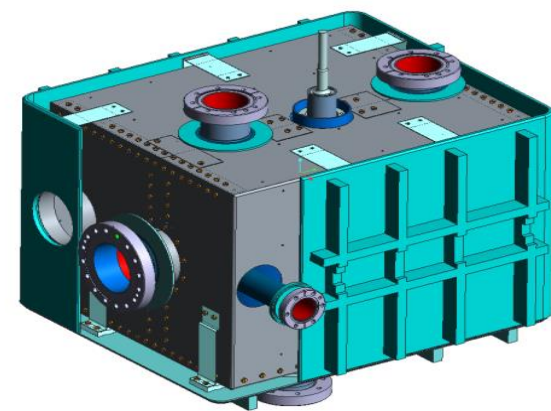


Detailed design for manufacturing ongoing for:

- Helium vessel + tuning, support, handling, alignment interface
- HOM couplers
- Cold magnetic shielding

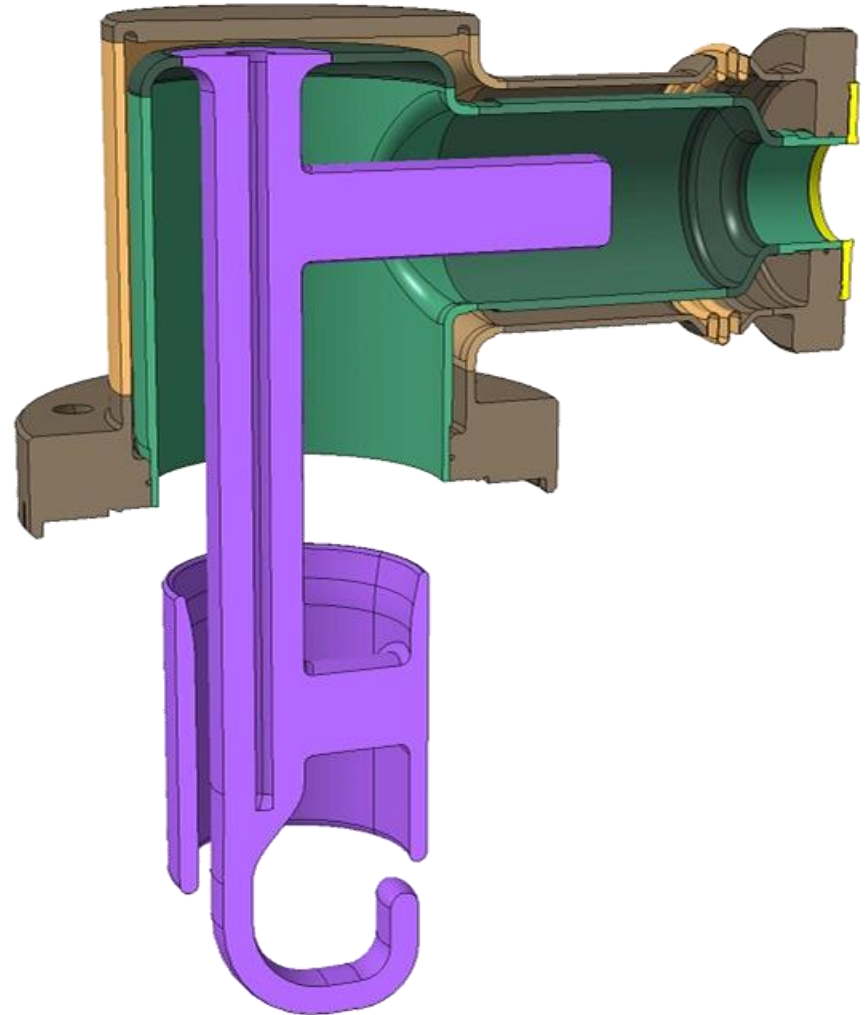
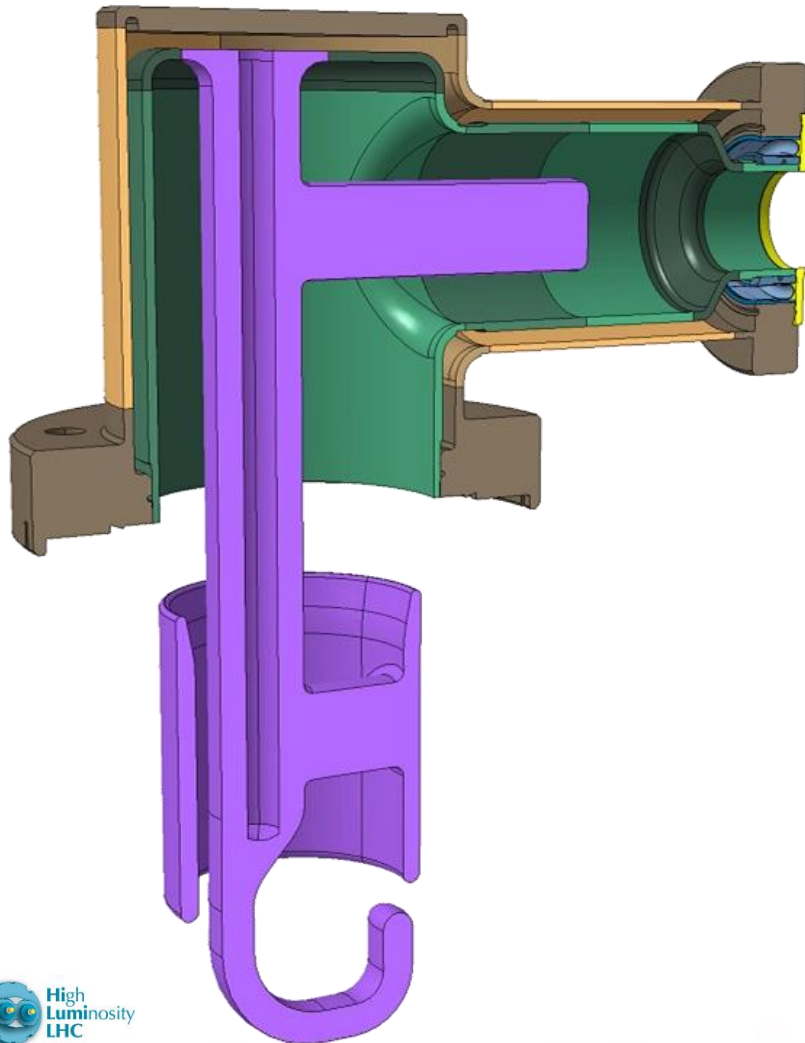
Cold magnetic shielding

Cold magnetic shielding inside helium vessel
Developed by colleagues from UK



HOM

Detailed discussions ongoing / design and manufacturing:



HOM

Detailed discussions ongoing / design and manufacturing

