

Access map – Campus Chantrerie, Subatech

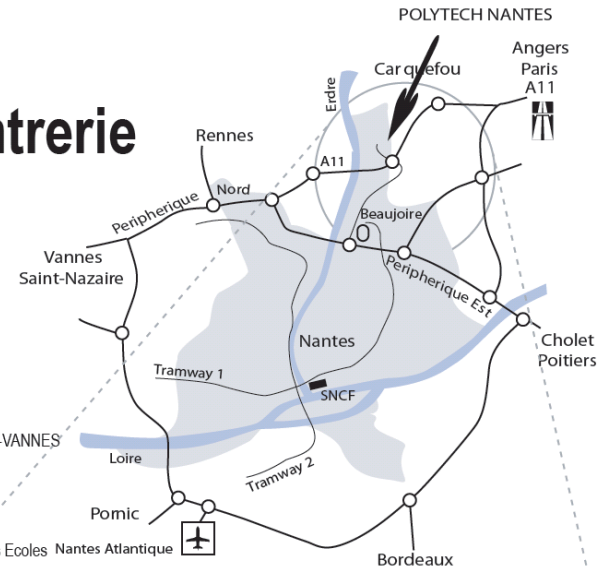
Plan d'accès Campus Chantrerie

POLYTECH NANTES
ECOLE POLYTECHNIQUE
DE L'UNIVERSITE DE NANTES
La Chantrerie - Rue Christian Pauc
C.S. 50609
44306 Nantes Cedex 3
Tél. 33 (0)2 40 68 32 00
Fax 33 (0)2 40 68 32 32

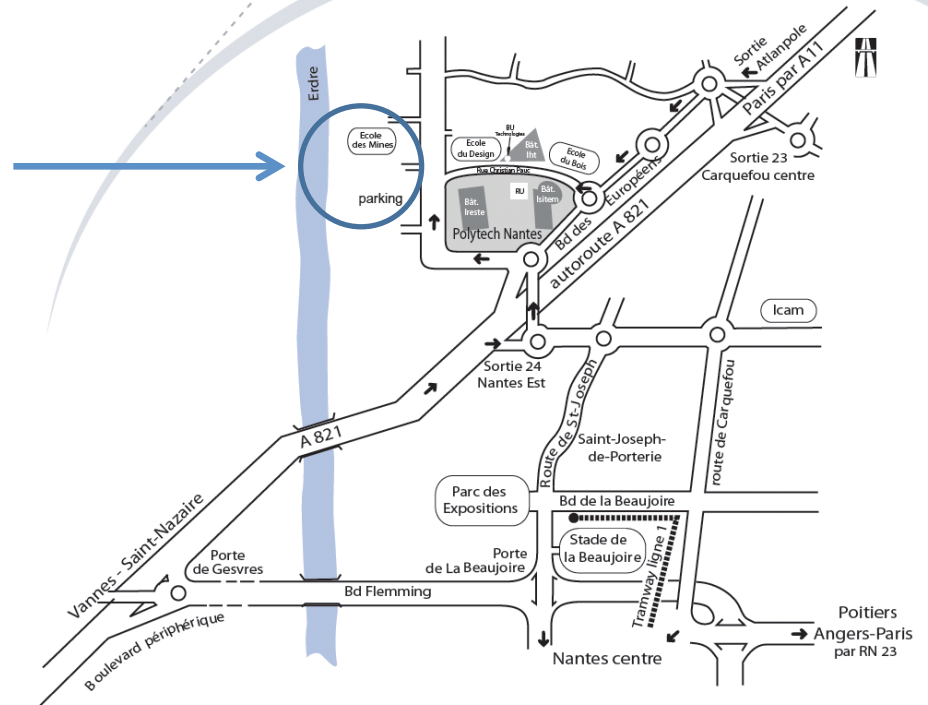
Accès par autoroute :
Sortie Nantes Est n°24 en venant de RENNES-VANNES
Sortie Nantes Est n°23 en venant de PARIS

De la gare SNCF (sortie gare nord) :
Tramway Ligne 1 jusqu'à Beaujoire
puis Ligne C6 ou 75 direction Chantrerie - Gdes Ecoles
Arrêt "Chantrerie"

Du centre ville :
Chronobus Ligne C6 jusqu'à l'arrêt Chantrerie - Gdes Ecoles



SUBATECH /
Mines Nantes
school



From the airport to Subatech (~1h)

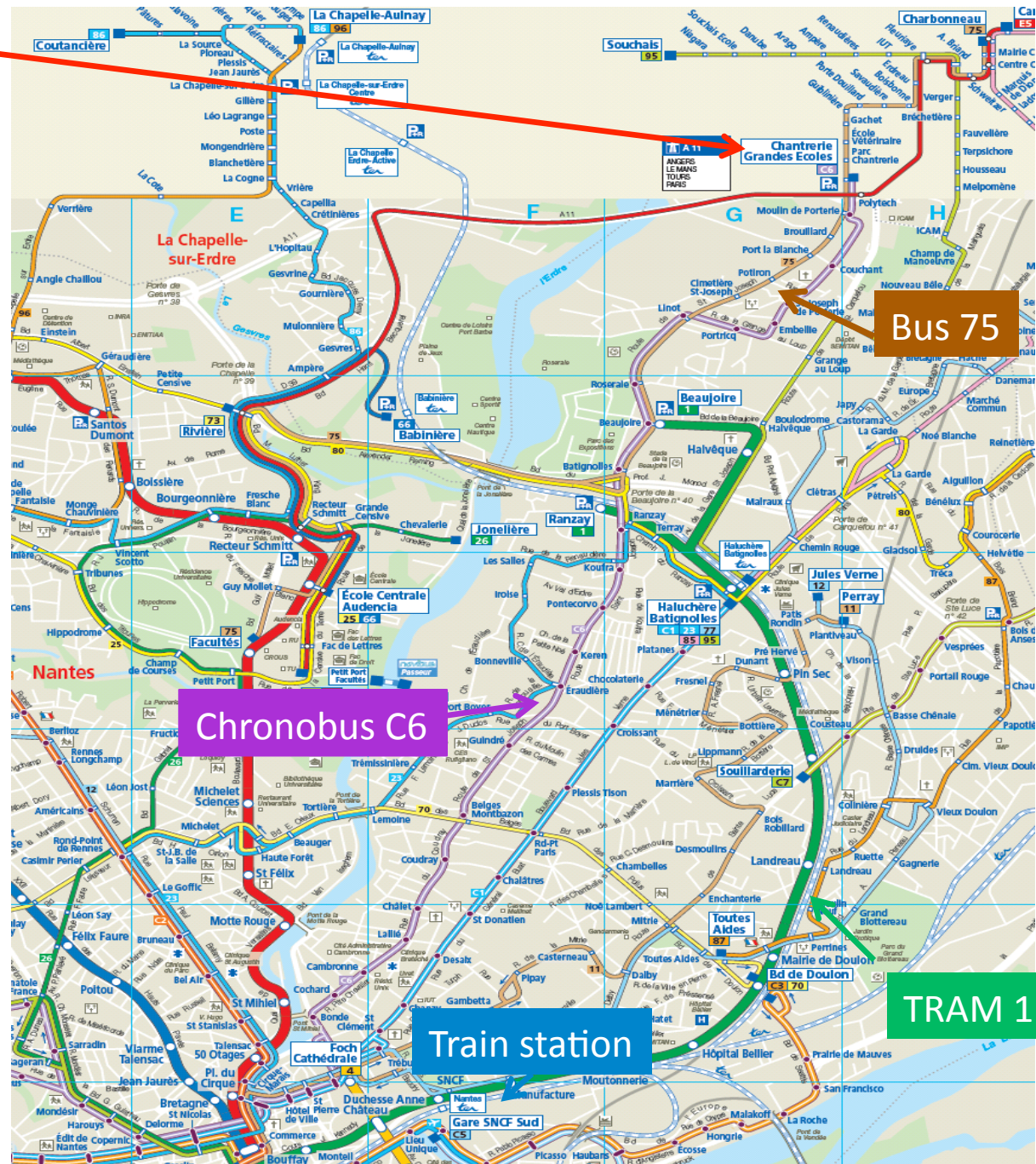
- Take the airport shuttle at the stop called "Nantes Atlantique Bouguenais" and get off at the stop named "Commerce".
- Then 3 options:
 - Take tram line 1 to "La Beaujoire" to the terminus. Walk to the bus stop and take the Chronobus # 6 or the bus # 75 get out at the stop "Chantrerie Grandes Ecoles".
 - Take tram line 2 to "Orvault Grand Val". Get out 1 stop after at the stop "Place du cirque". Then take the Chronobus # 6 to "Chantrerie Grandes Ecoles". Get out at the terminus.
 - Walk along the 50 otages boulevard to "La place du cirque" (4min). Then take the Chronobus # 6 to "Chantrerie Grandes Ecoles". Get out at the terminus.

Bus stop for
SUBATECH/Mines
Nantes school

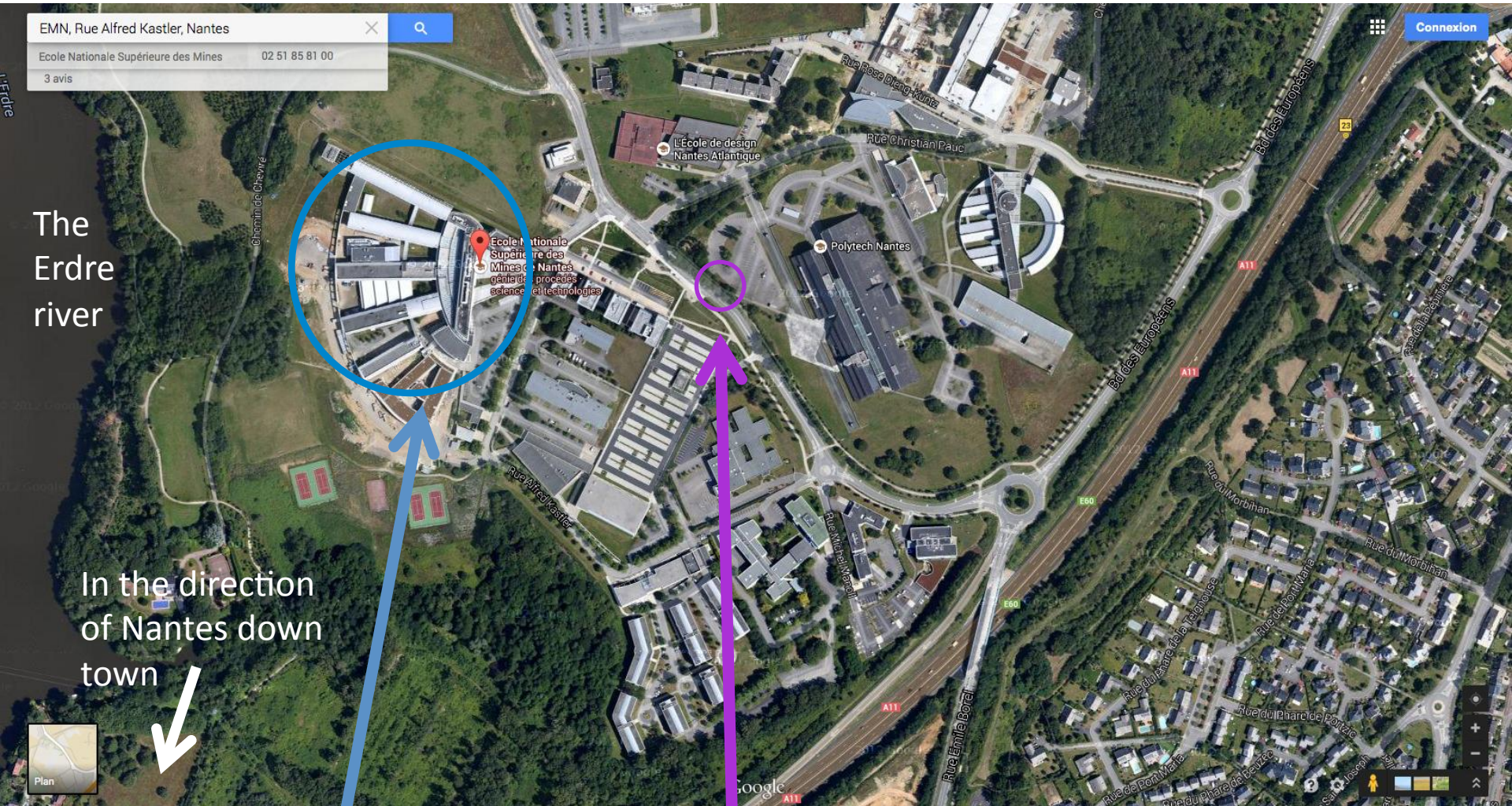
**From the train station to
SUBATECH (~30-35min):**
TRAM 1 in the direction of
« Beaujoire ». Stop Beaujoire.
Then bus 75 in the direction of
« Charbonneau » or C6 in the
direction of « Chantrerie,
Grandes Ecoles ». Stop
« Chantrerie, Grandes Ecoles »

**After your arrival, from
SUBATECH to downtown:**
Chronobus C6 in the direction
of Hermeland

**From downtown to
SUBATECH:** Chronobus C6 in
the direction of « Chantrerie,
Grandes Ecoles ». Stop
« Chantrerie, Grandes Ecoles »



La Chantrerie – Sky view



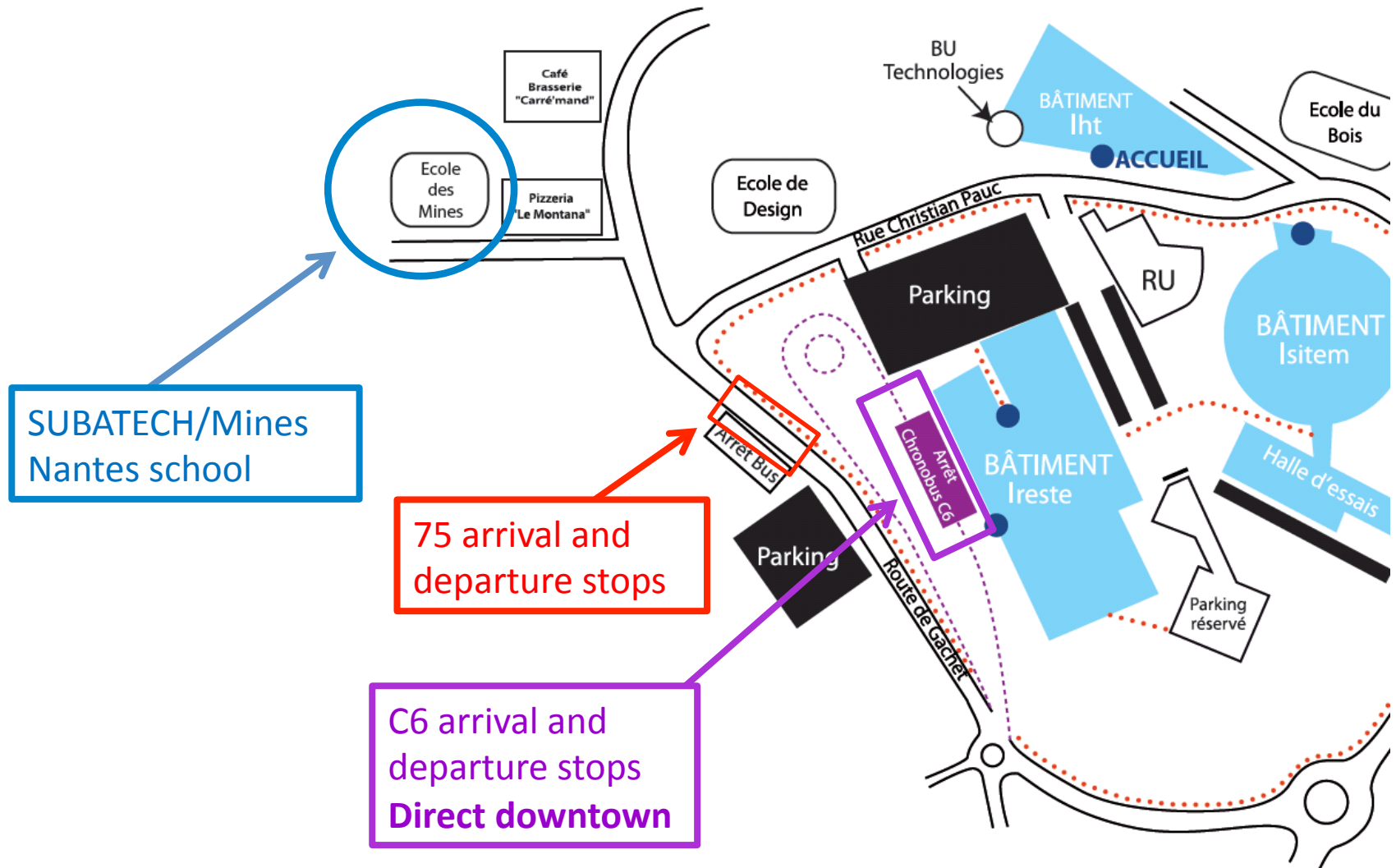
The Erdre river

In the direction of Nantes down town

SUBATECH/Mines school

Bus stop positions (75 and C6)
This is an old map view – Today there is a new and bigger bus stop (« Chantrerie – grandes ecoles »)

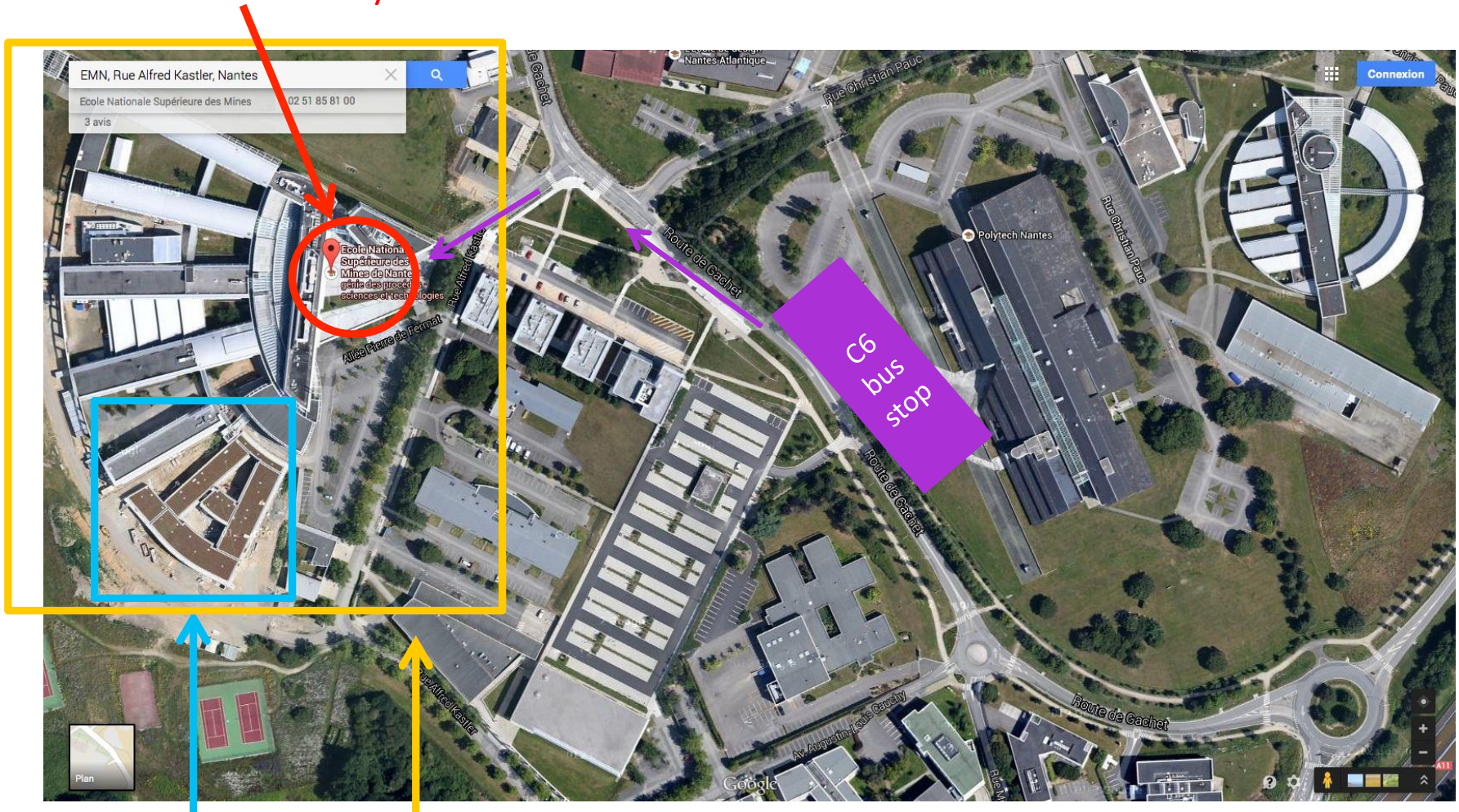
Map of the new route and stop of the bus (75 and Chronobus C6)



If you directly come from the town center, the chronobus C6 should be preferred

Sky view (zoom)

Warning!! The workshop in the Mines Nantes School building, not at Subatech!
You should enter by the main entrance of Mines Nantes school!



SUBATECH

Mines Nantes
school