

MAP OF MEETING ROOMS

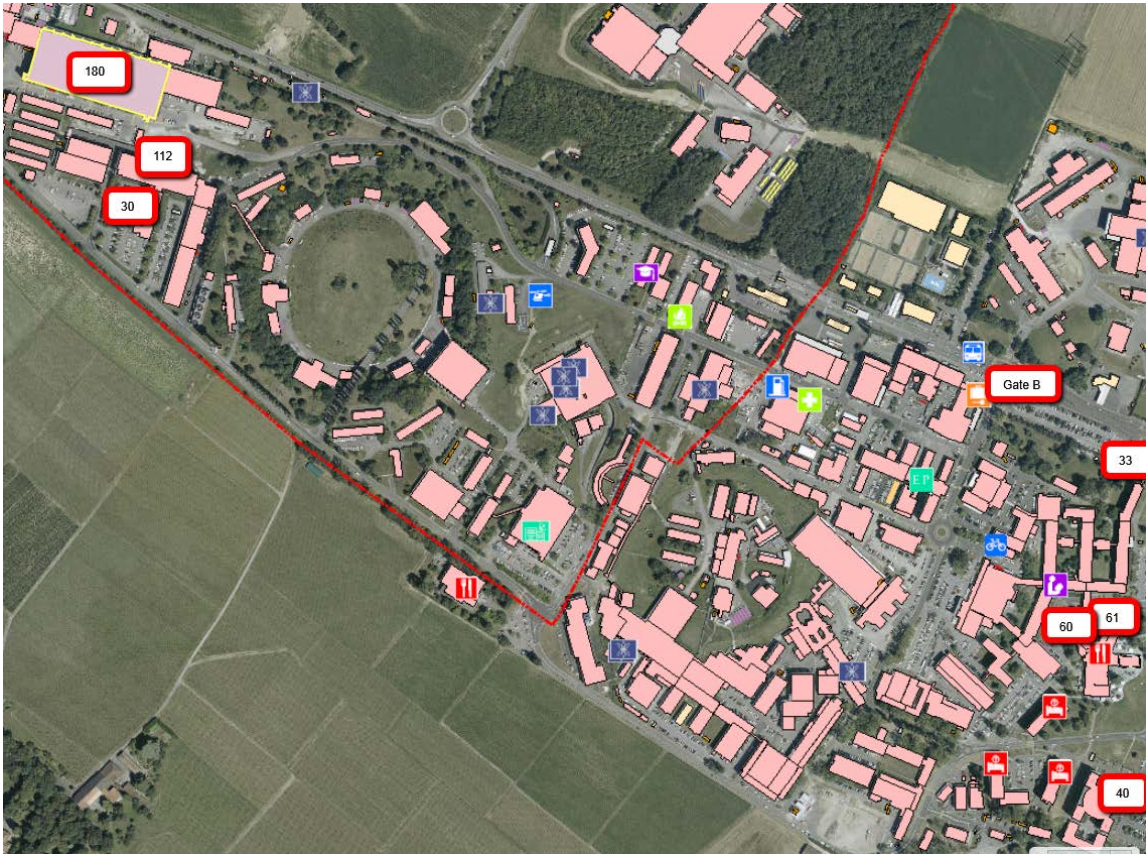
Monday 8 December: 61-1-017 (executive session) and 40-S2-D01 (plenary session)

Tuesday 9 December AM: 30-6-041 (executive session) and 112-R028 (plenary session)

Tuesday 9 December PM: 927-1-B23 (plenary session) and 61-1-007 (executive session)

Wednesday 10 December: 60-5-012 (executive session) and 40-S2-A01 (close-out) or if additional presentations are requested 30-6-041 (executive sessions), 30-7-010 (plenary session) and 40-S2-A01 (close-out)

Meyrin site



Preveessin site

