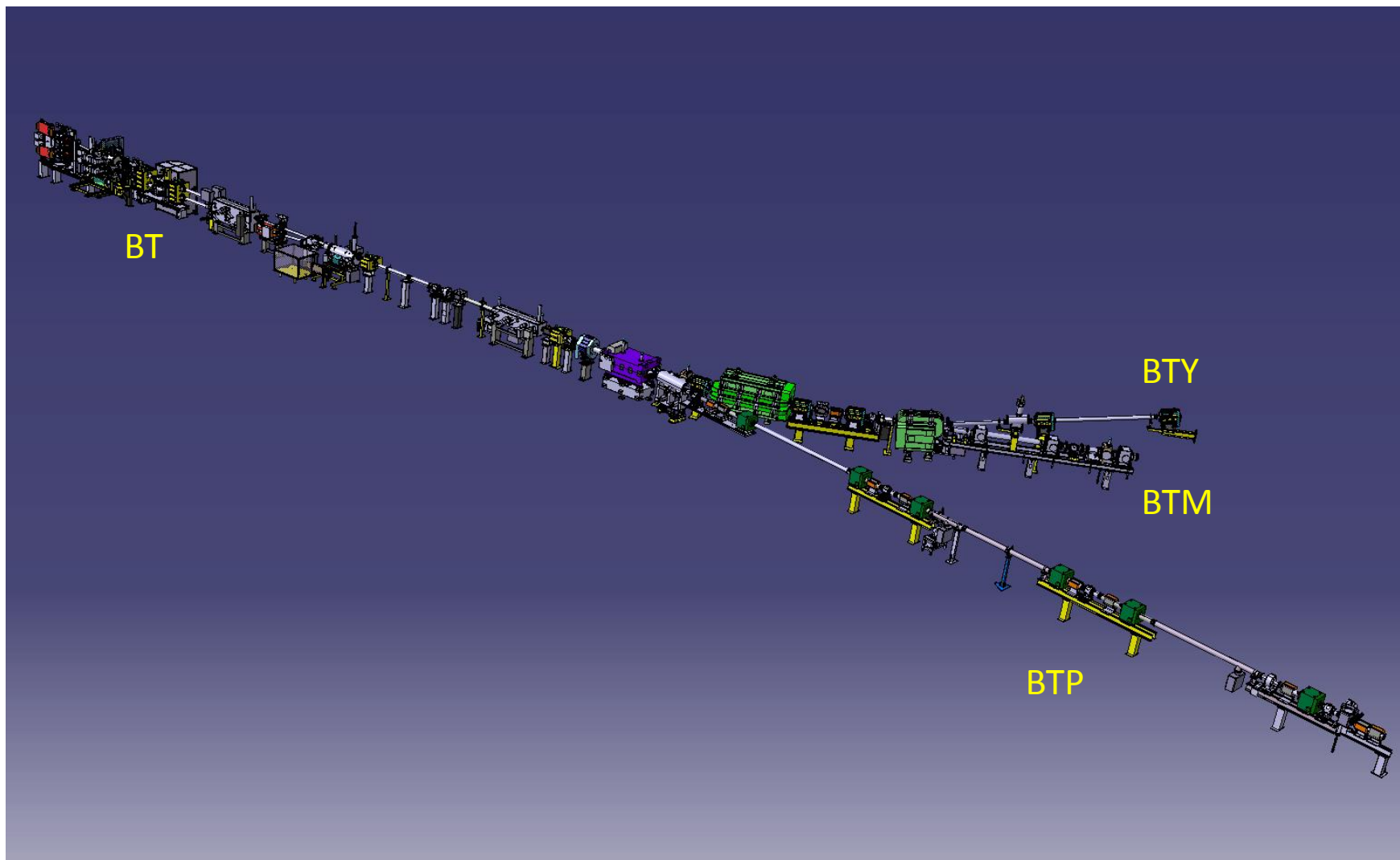
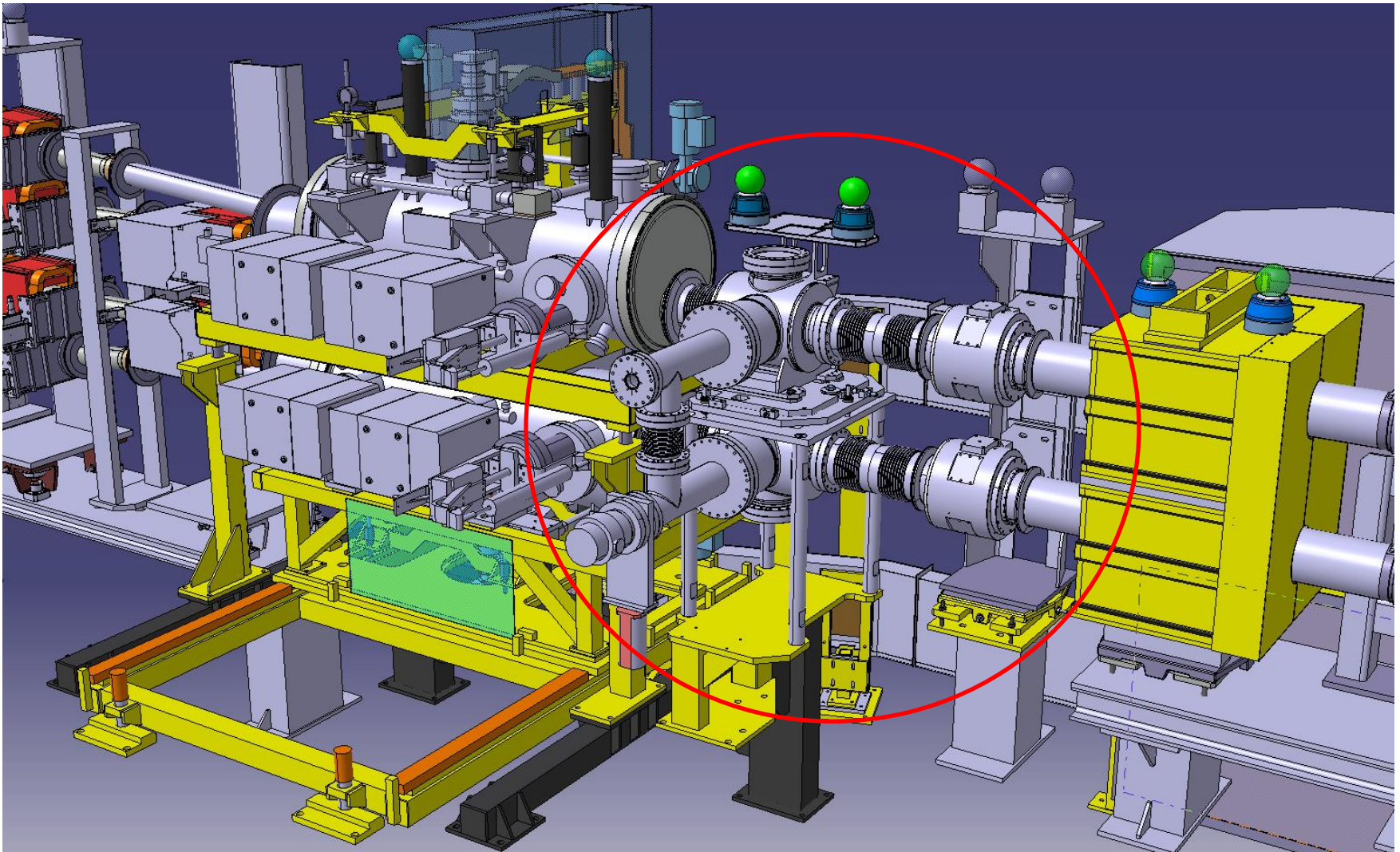


STATUT DES LIGNES BT BTP BTM BTY

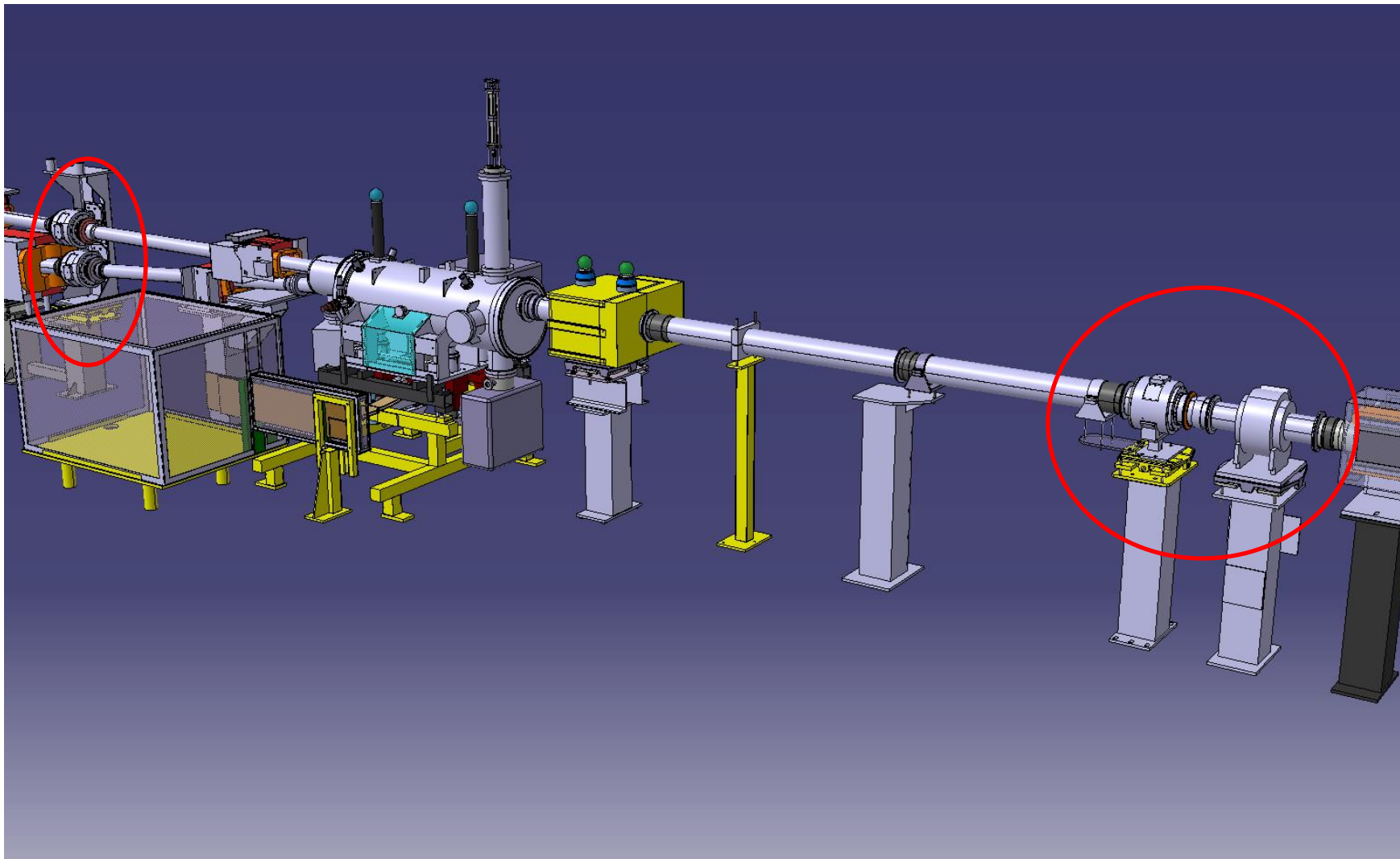


STATUT DES LIGNES BT BTP BTM BTY



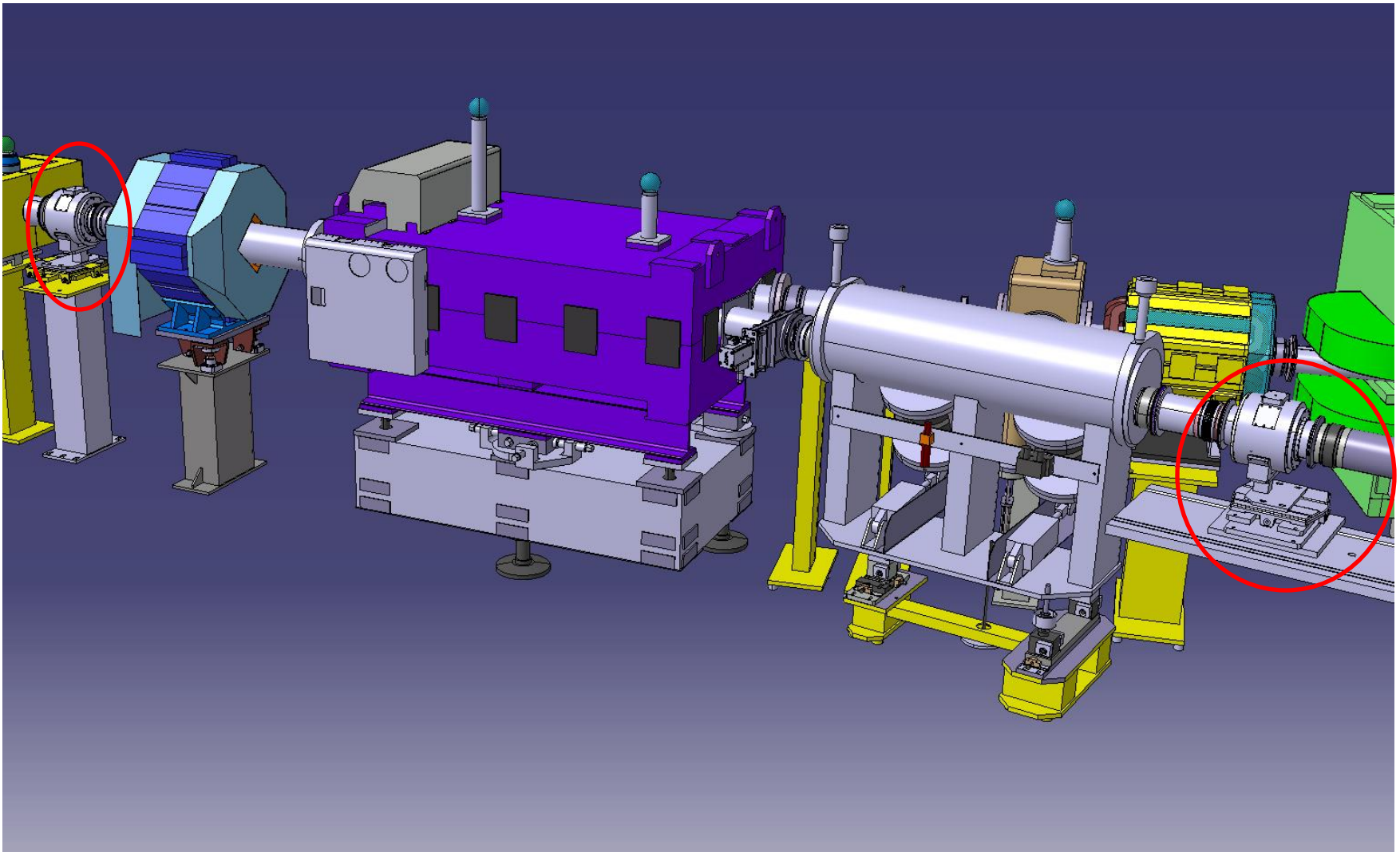
TANK DE POMPAGE ET BT.UES10 MIS A JOUR

STATUT DES LIGNES BT BTP BTM BTY



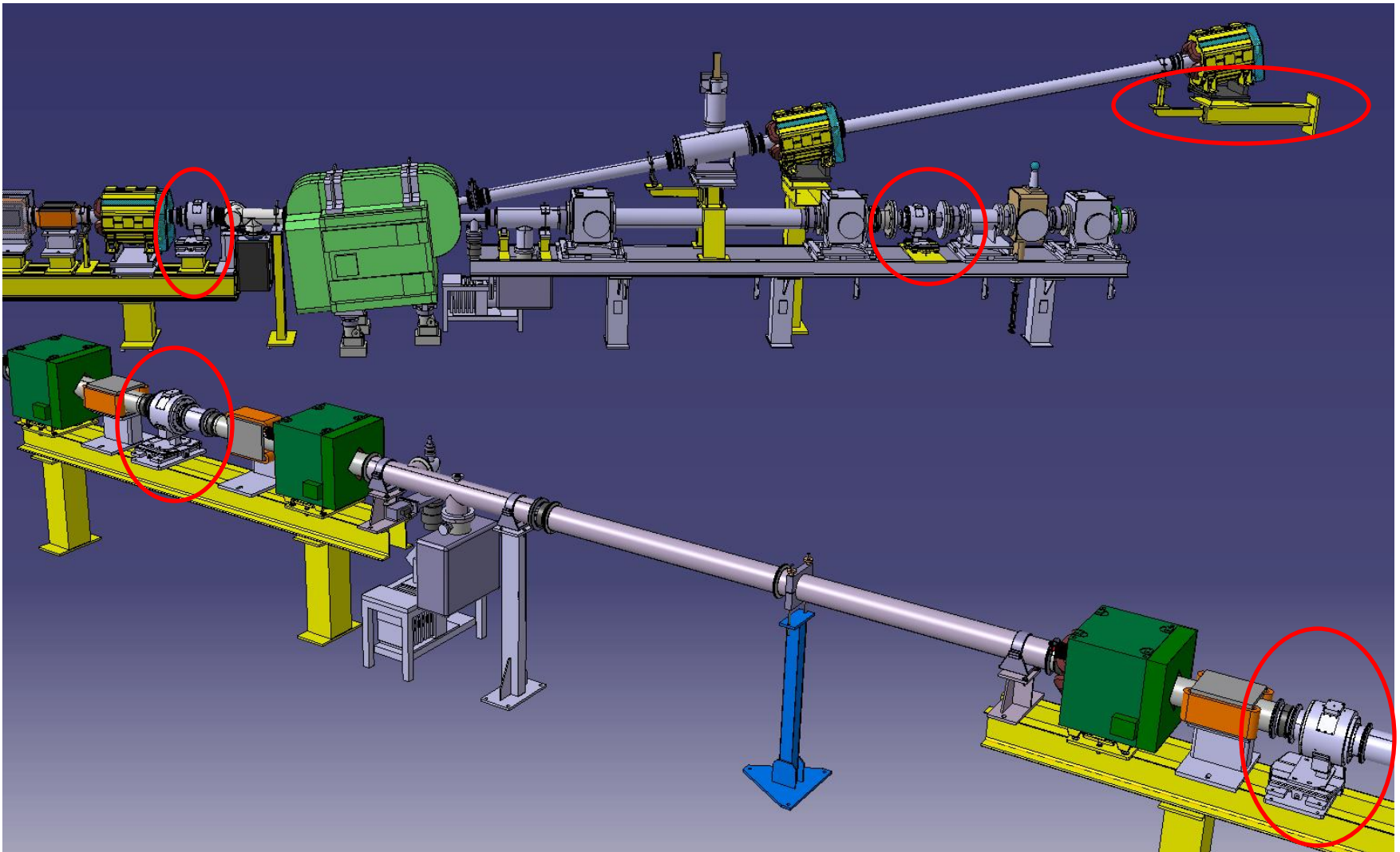
BT.BCT10, BT.UES20, BT.UES30 MIS A JOUR

STATUT DES LIGNES BT BTP BTM BTY



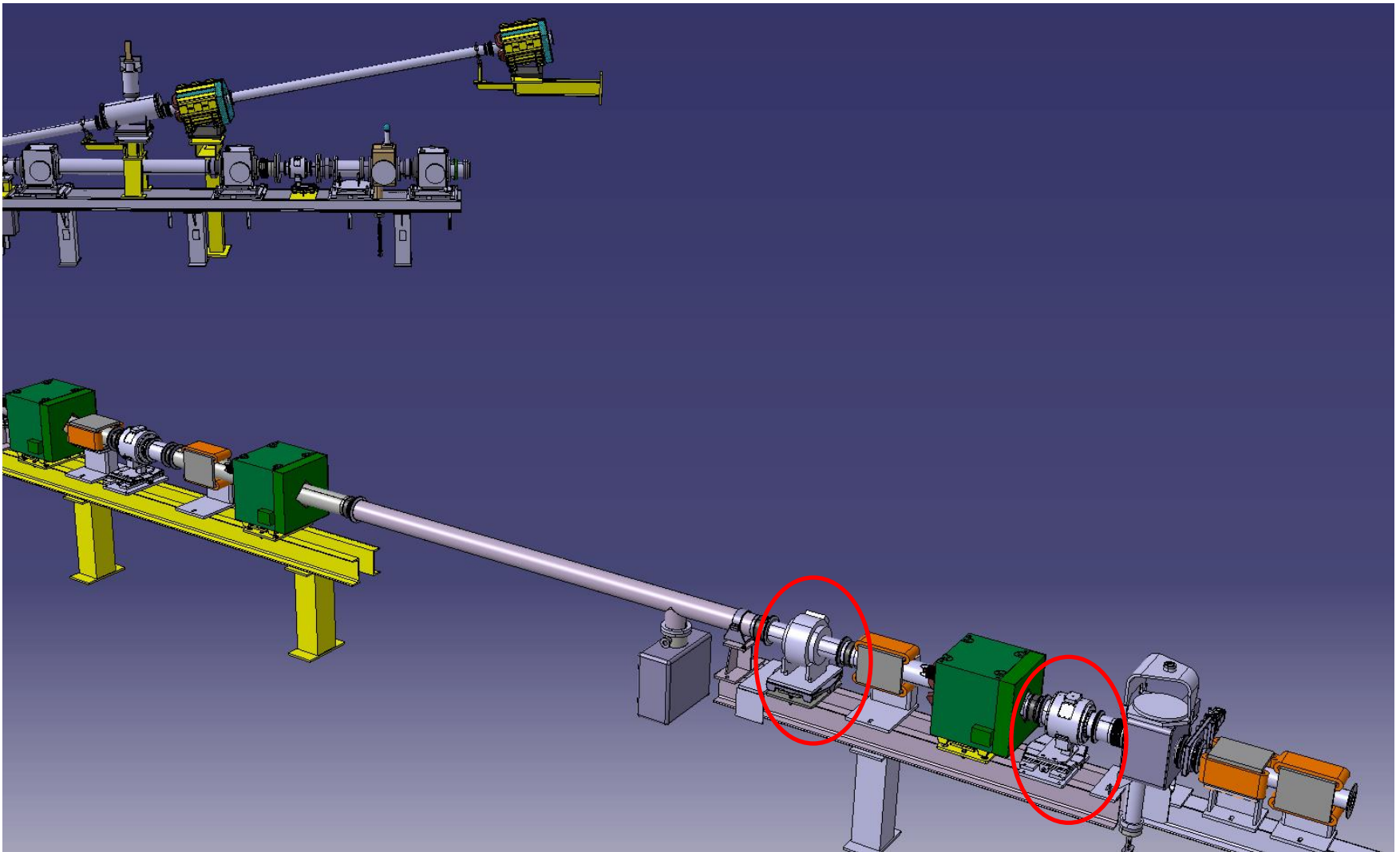
BT.UES40 ET BTP.UES00 MIS A JOUR

STATUT DES LIGNES BT BTP BTM BTY



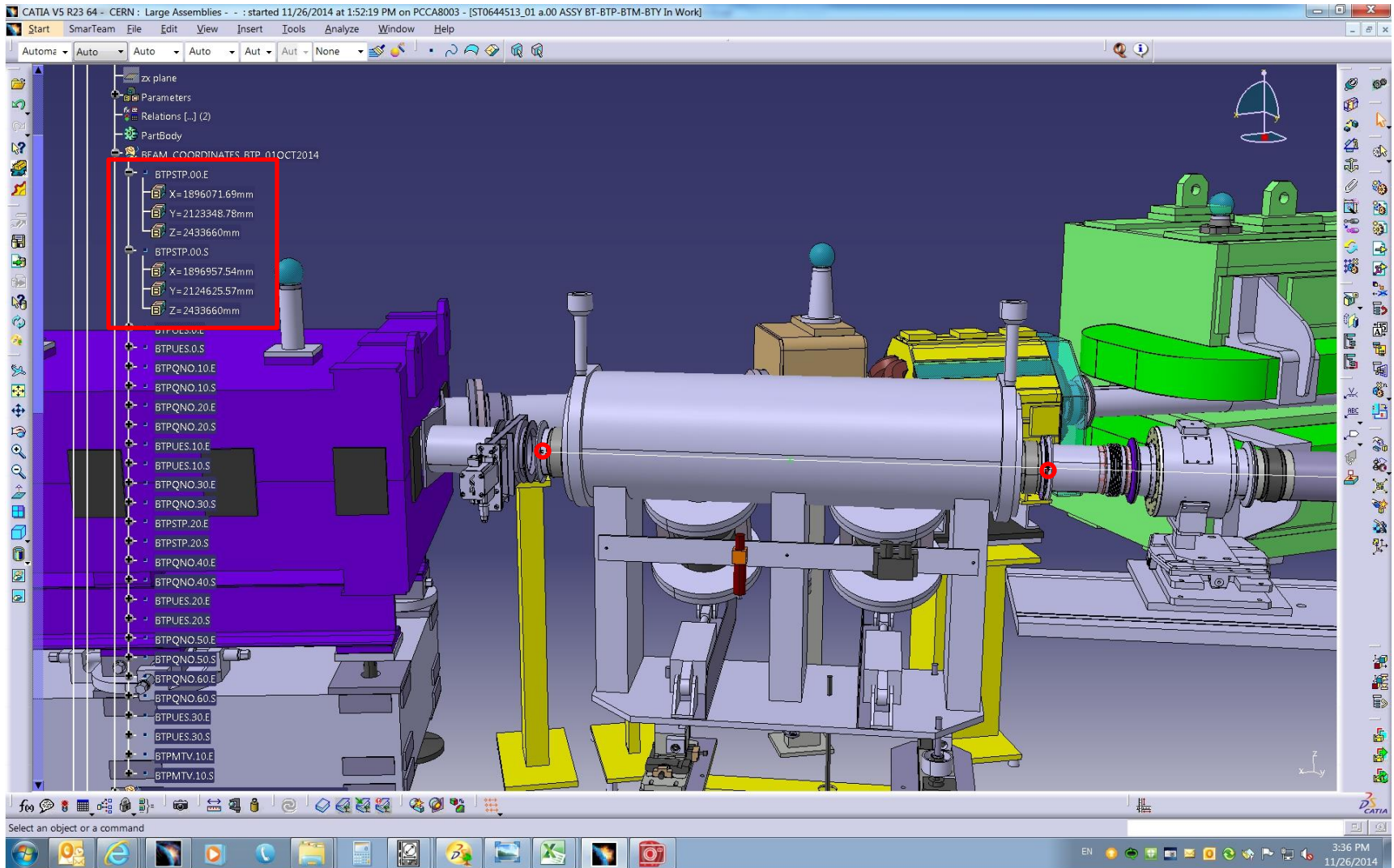
BTP.UES10, BTP.UES20, BTM.UES00, et support BTY.QFO108 mis à jour
La suite de la ligne BTY n'est pas à jour (BCT, UES)

STATUT DES LIGNES BT BTP BTM BTY



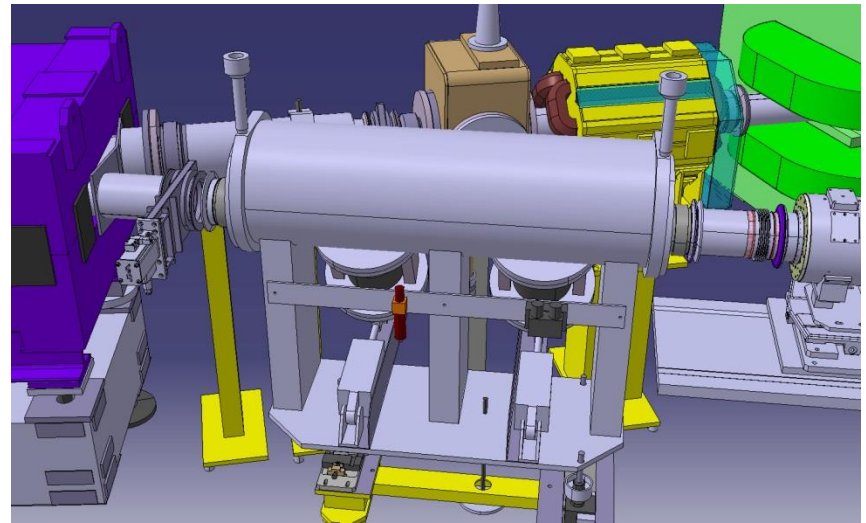
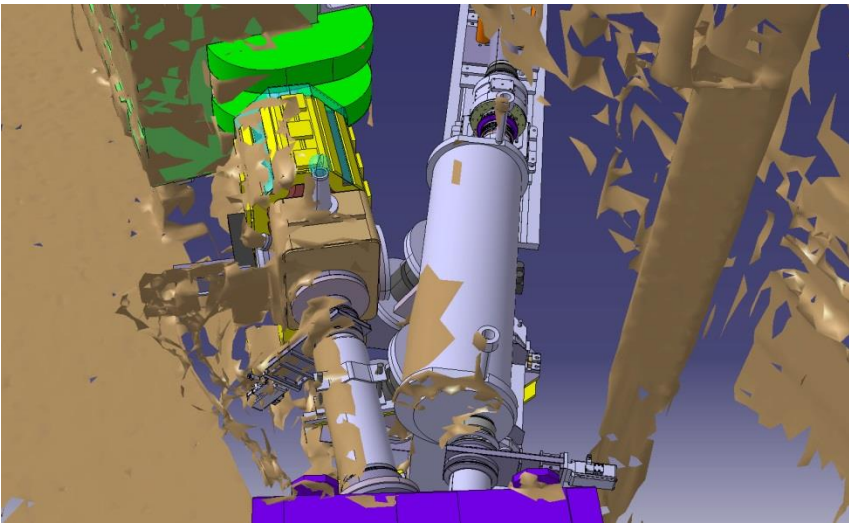
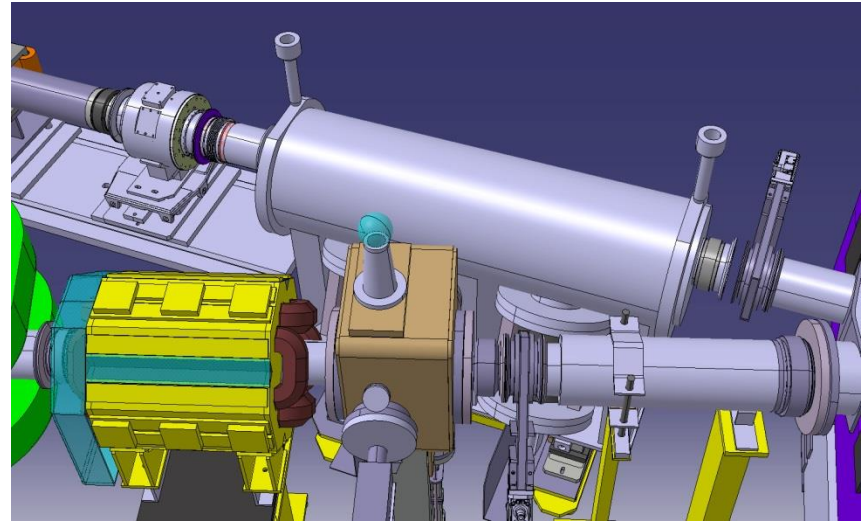
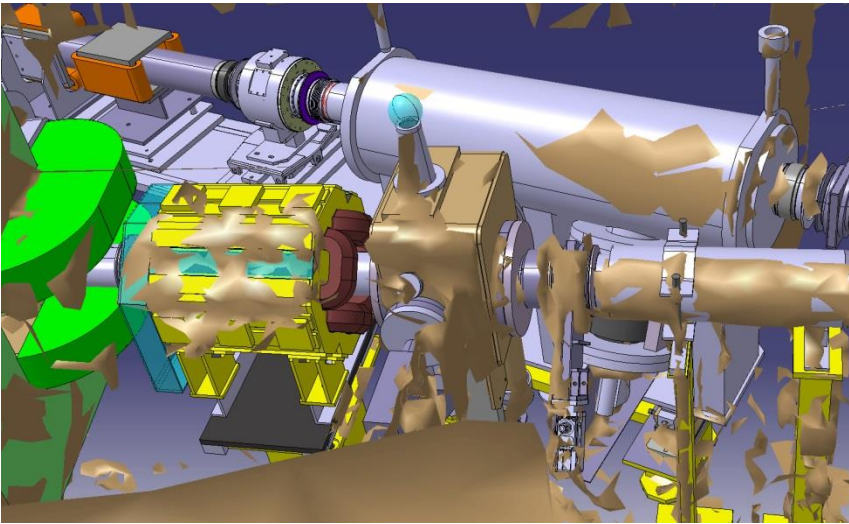
BTP.BCT10, BTP.UES30 MIS A JOUR

STATUT DES LIGNES BT BTP BTM BTY



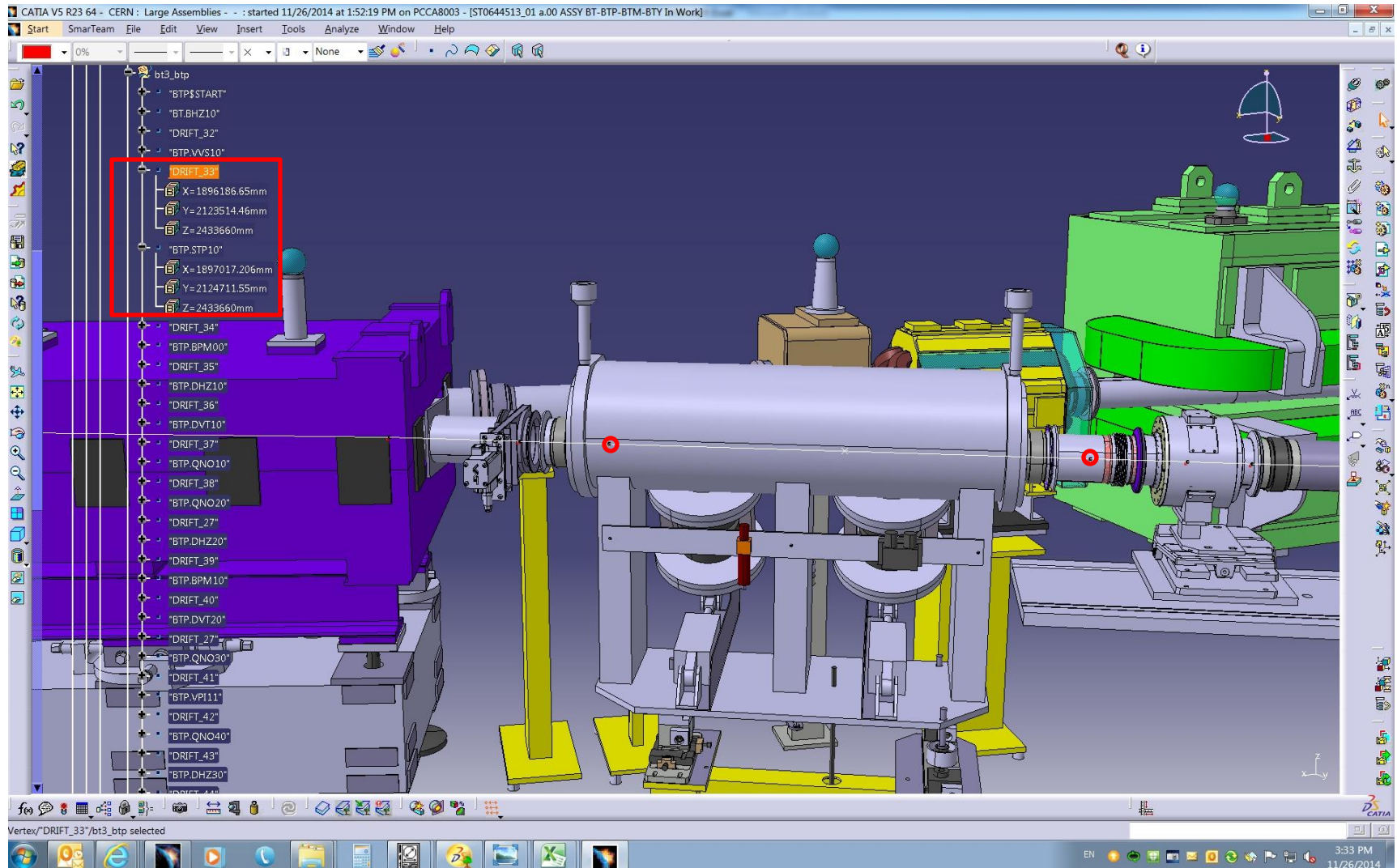
POSITION BTP.STP10: POINTS ISSUS DE GEODE COHERENTS AVEC LE SCAN 3D

STATUT DES LIGNES BT BTP BTM BTY



Position BTP.STP10 selon le scan3D, Vérification des éléments amont et aval à faire (erreur environ 27mm)

STATUT DES LIGNES BT BTP BTM BTY



POSITION BTP.STP10: POINTS ISSUS DU FICHER OPTIQUE FAUX (Erreur environ 150mm/ à Geode)