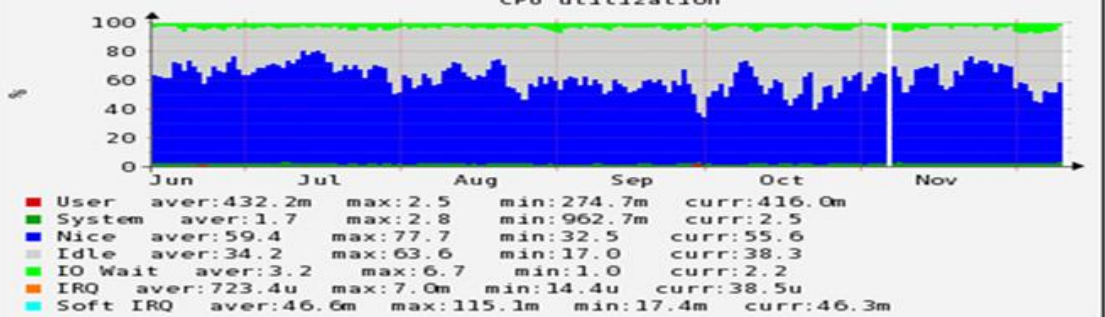
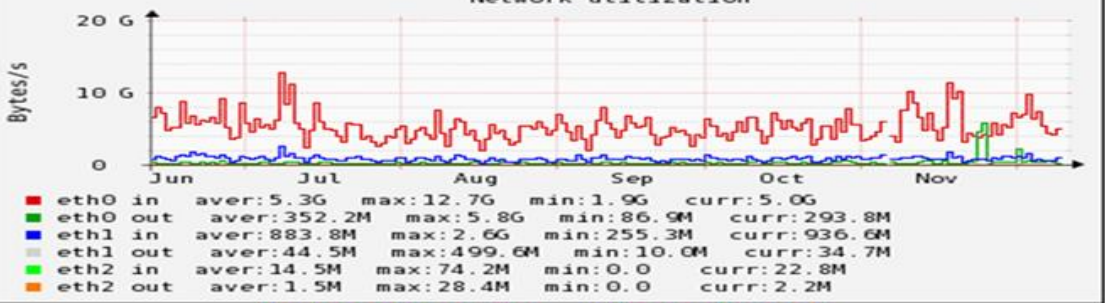


CPU utilization



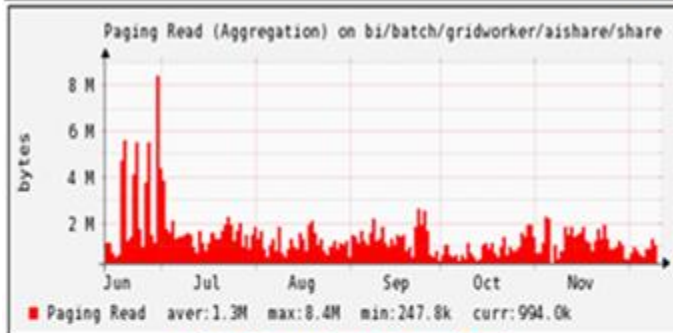
[Link to this graph](#) [Advanced graph](#)

Network utilization

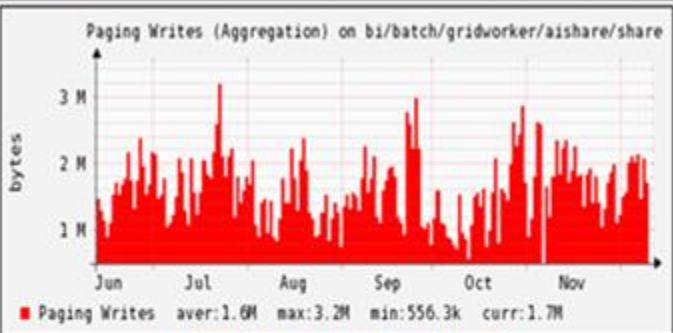


[Link to this graph](#) [Advanced graph](#)

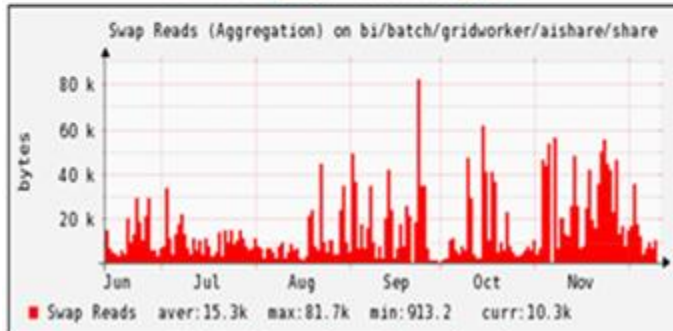
Pagings and swap



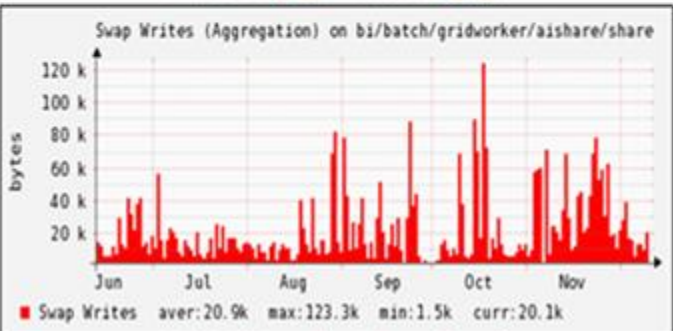
[Link to this graph](#) [Advanced graph](#)



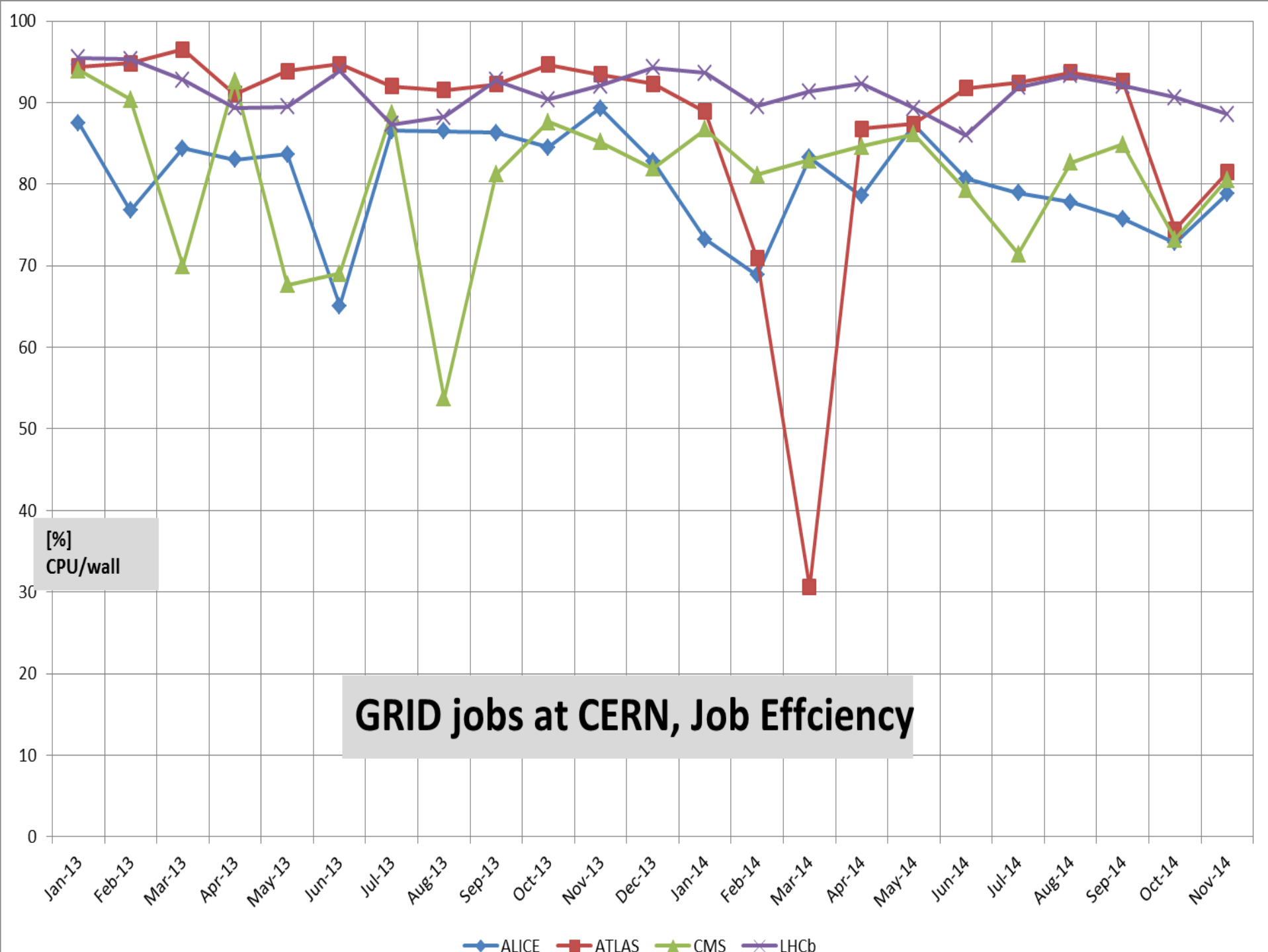
[Link to this graph](#) [Advanced graph](#)



[Link to this graph](#) [Advanced graph](#)



[Link to this graph](#) [Advanced graph](#)



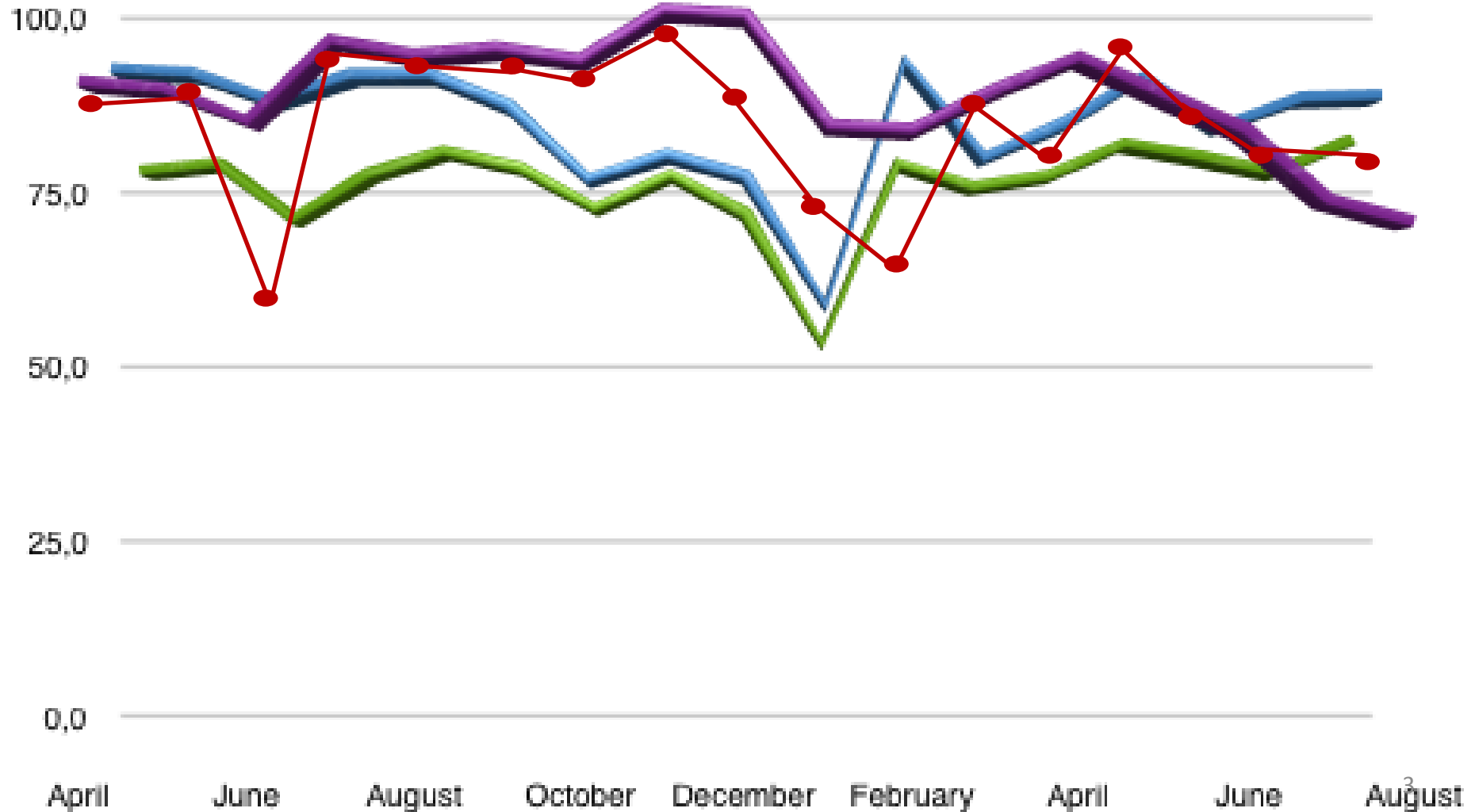
CPU Efficiency, Predrac, LHCC Sept 2014

● CERN, GRID jobs Efficiency

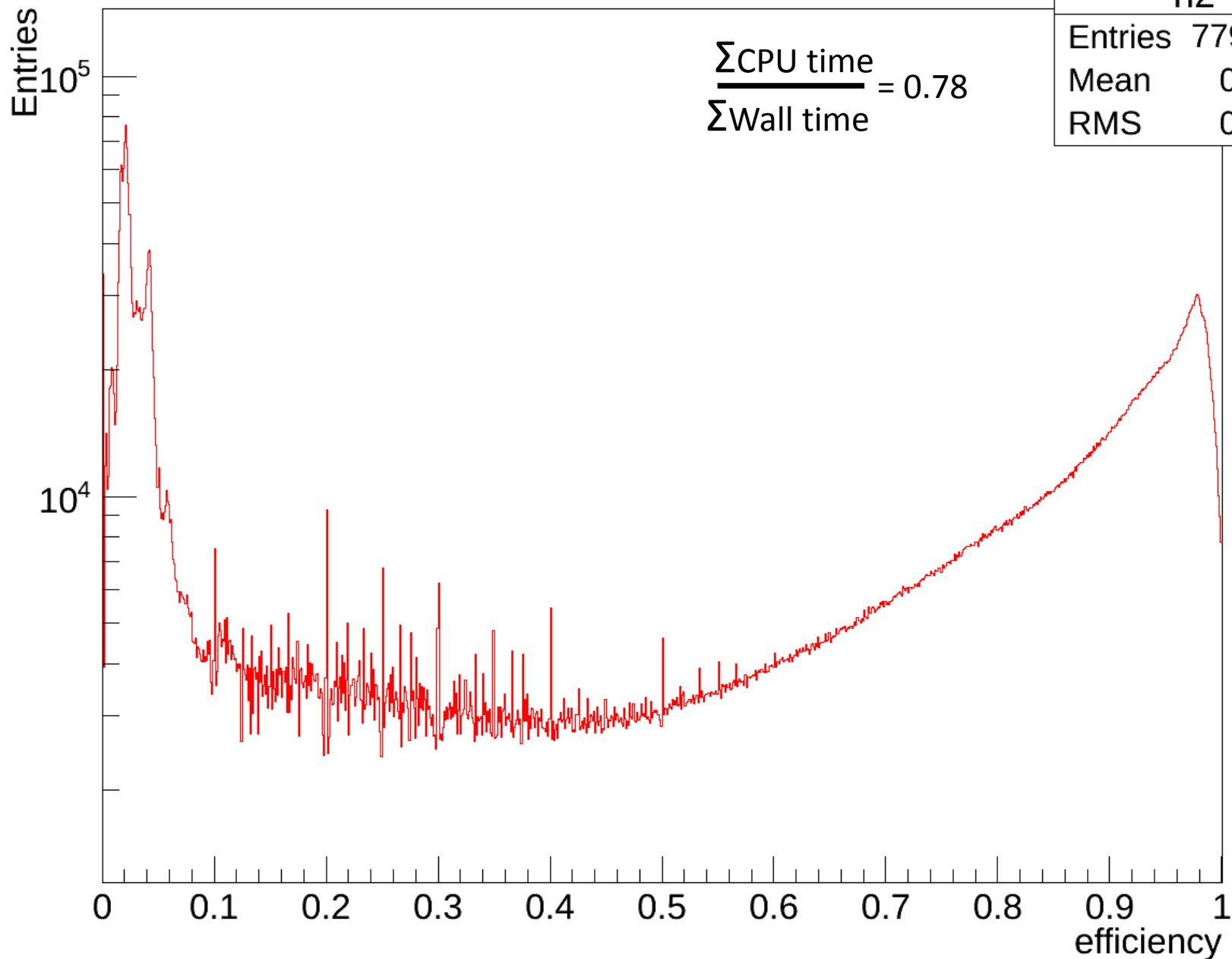
— T0 Efficiency

— T1 efficiency

— T2 efficiency



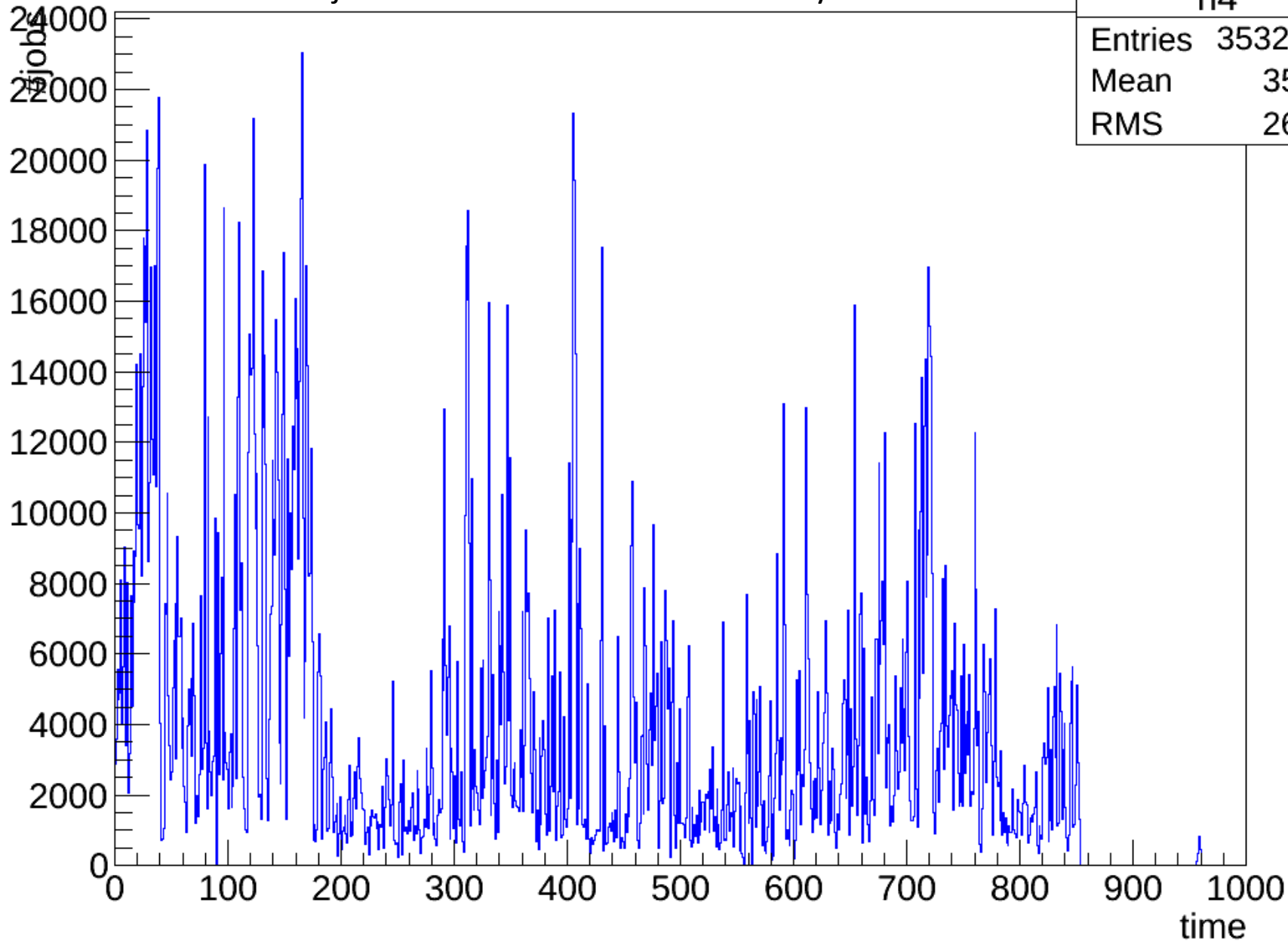
ALICE jobs, Jan-Oct 2014, efficiency distribution



ALICE jobs, Jan-Oct 2014, Efficiency distribution over time, effi < 0.6

#jobs in 8h intervals with efficiency < 0.6

h4	
Entries	3532336
Mean	358.7
RMS	260.5



ALICE jobs, Jan-Oct 2014, real time distribution

