

WLCG Workshop

Atlas Readiness

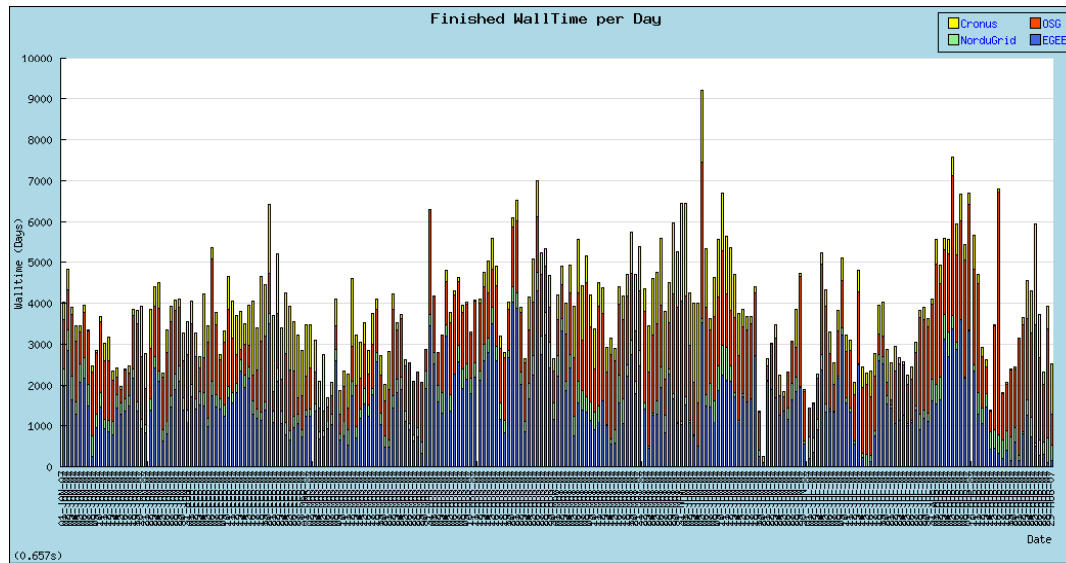
Simone Campana

(complementary to Michael's slides)

Data Management

- Situation is EGEE similar to US (see Michael's slides), but sometime lacks of dedicated support at some sites
 - ATLAS dedicated contact at sites proved to be essential
- My feeling is that new version in EGEE (0.4) is a big improvement
 - Shares, Central Catalog
- For sure the monitoring improved a lot (Dashbord)
- Main issue is data movement (cataloguing is OK)
 - Suffers mostly from SE's instabilities.

Distributed Production

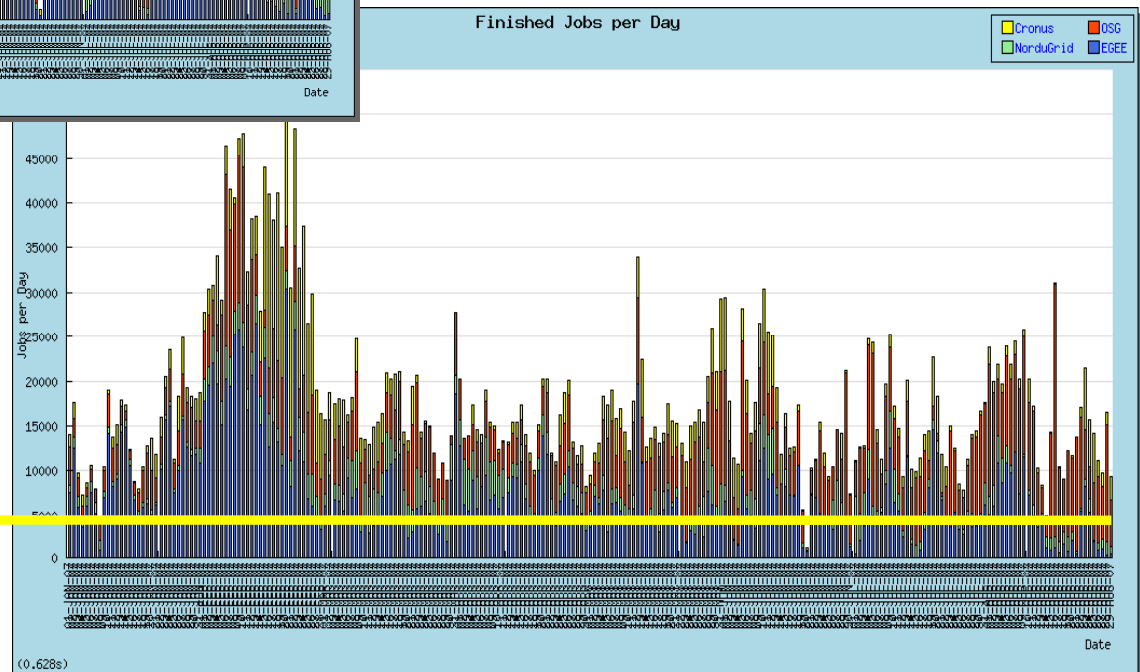


W63/Day 2007
May 2006 to
December 2006

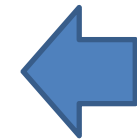
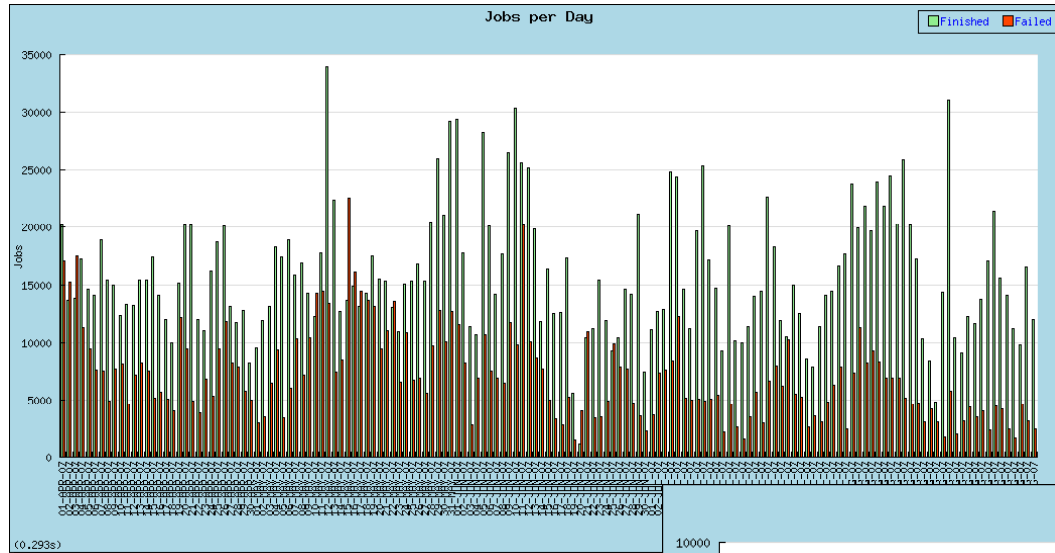
Jobs/Day
Jan 2007 to
August 2007



Average 2006:
4200 jobs/day

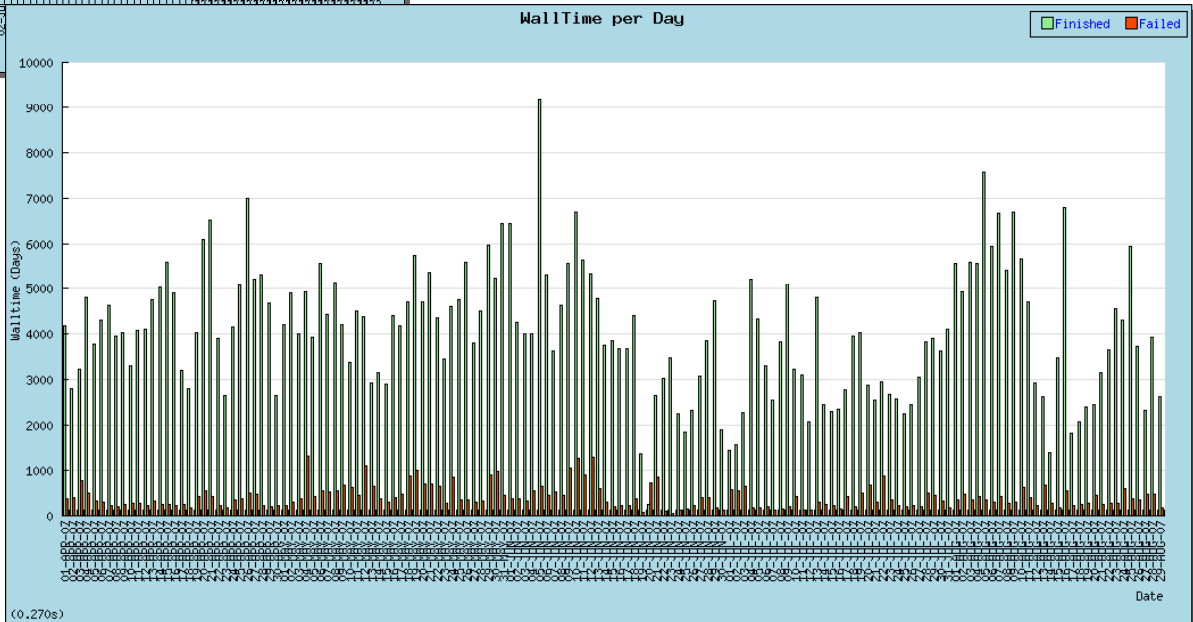


Distributed Production



Job Efficiency
Last 4 months

WCT Efficiency
Last 4 months



Executors

- In EGEE production is run via Lexor and Condor
 - Lexor is a thin layer on top of the gLite WMS.
 - Condor used both in push and pull mode (glide-ins)
 - Most of the code is common between the two
- Both Rely on DDM to move files (asynchronous), but less integrated with DDM w.r.t. Panda
- Monitoring is based on info's from Production Database
- A EGEE production operation team active daily in debugging and following up production issues

Distributed Analysis

- Run via Ganga
 - Supports a variety to submission system (local batch systems, gLiteWMS, Condor)
 - Integration with Panda is ongoing.
- Very active user community
- Unavailability/non completeness of data on EGEE is the main issue.