

ideasquare

spatial design

H.Toivonen 9.12.2014



ideasquare in brief

“IdeaSquare@CERN is a **pilot project** that brings together physicists, engineers, industrial partners, early-stage researchers and cross-disciplinary teams of students to **work together** on detector upgrade R&D technologies. The purpose is to **co-develop new technologies for research purposes**, and at the same time, create a fruitful environment for socially and globally relevant **new product ideas and innovation.**”

ideasquare

space development



 completed

 in development

 long term objectives



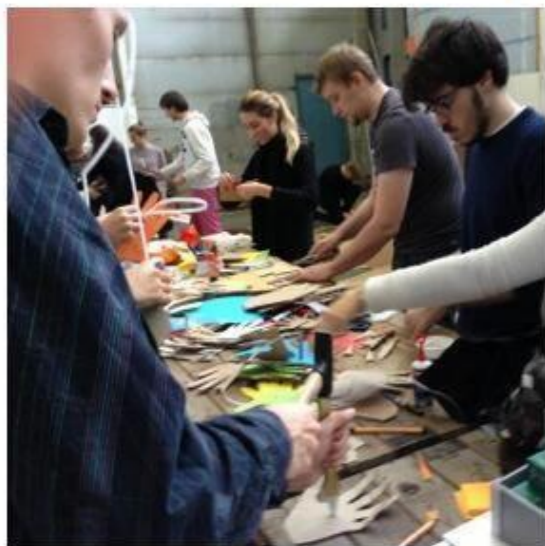
Phase 1

Idealab pilot (B16/153)

April 2013 - July 2014







Use a corner (120m²) of an existing building / assembly hall B16/B153 to test

Phase 2

development of ideasquare

B3179

July 2013 - December 2014

















Phase 3

**Observing, measuring use of ideasquare
to improve**

December 2014 - December 2015





Barnes Hammersmith
Kensington
Piccadilly Circus
9
Leading Class

JJD
520D

LONDON TRANSPORT

Why is spatial development important?

- Development work (at ERI's, CERN, universities, companies..) is shifting from traditional researcher-developer-manufacturer relationships to collaboration to co-creation
- In order to make order-of-magnitude leaps in technology and its applications, we need to try and find new and improved ways of working
 - with people, processes, spaces, funding..
- Ideas need an experimentation place (physical/mental) to be developed further
- Hypothesis: Value on ideas from basic research is easier to build upon when they are realized in tangible format (prototypes)



PROTOTYPING

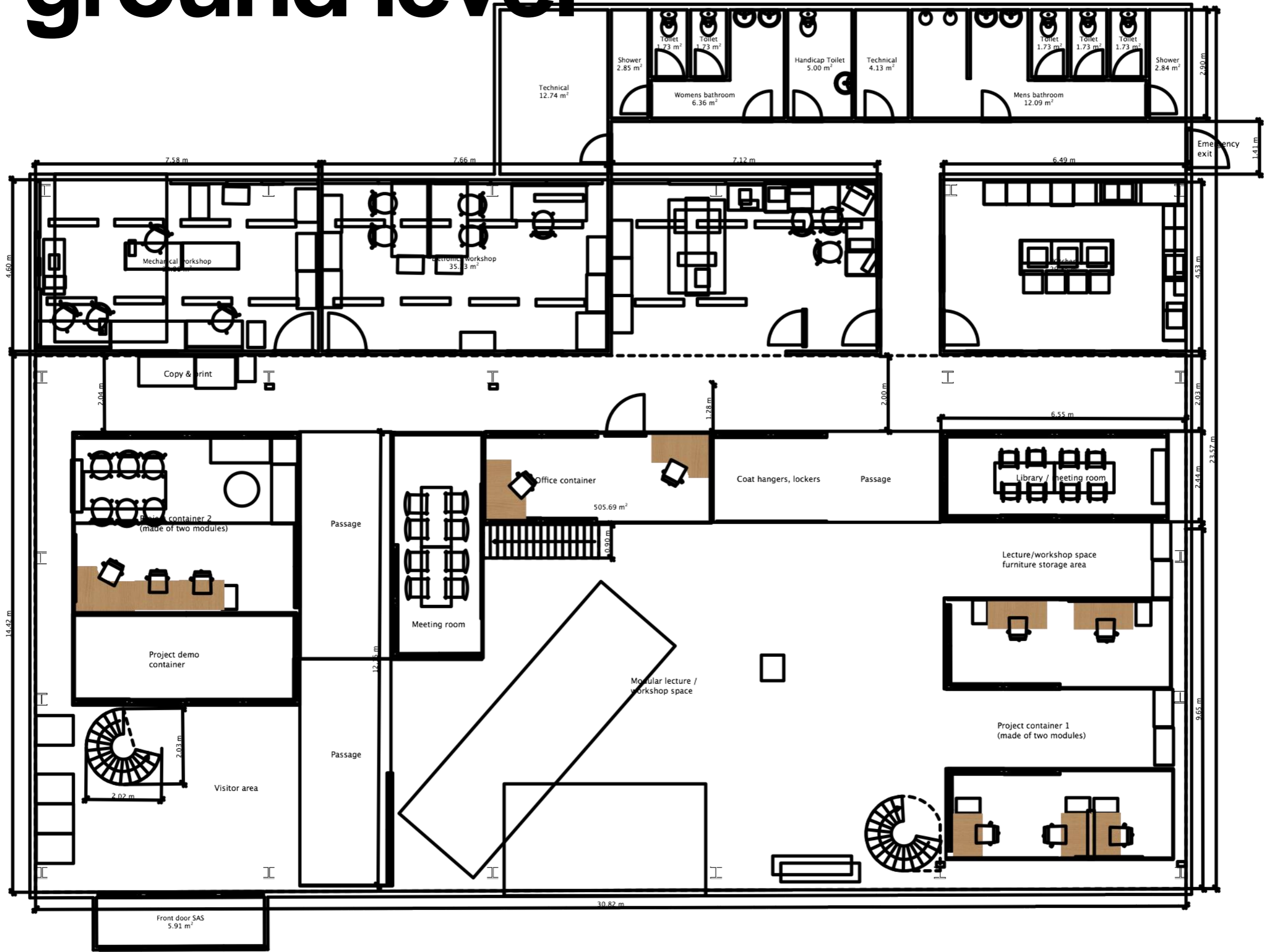




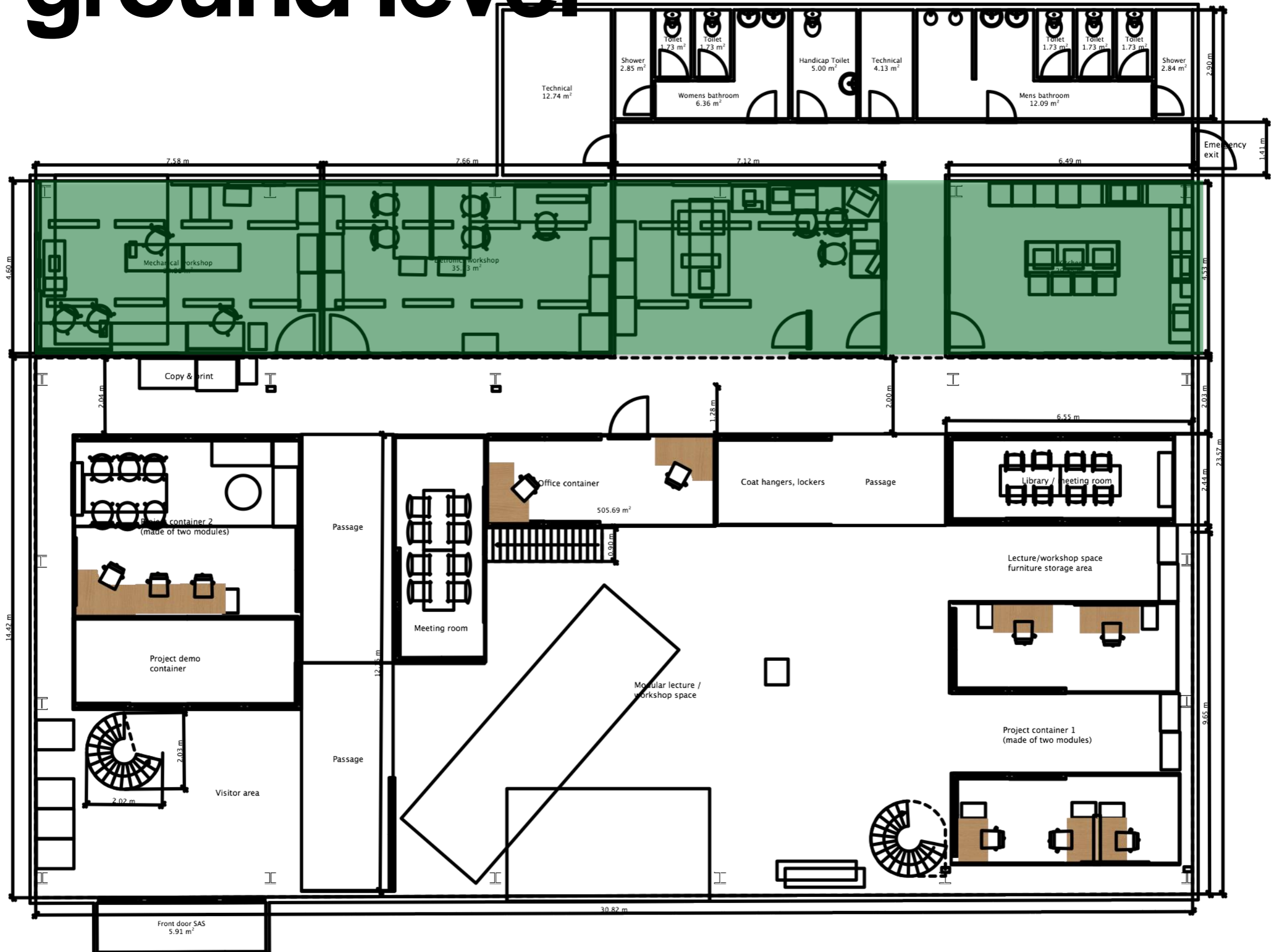
USER TESTING



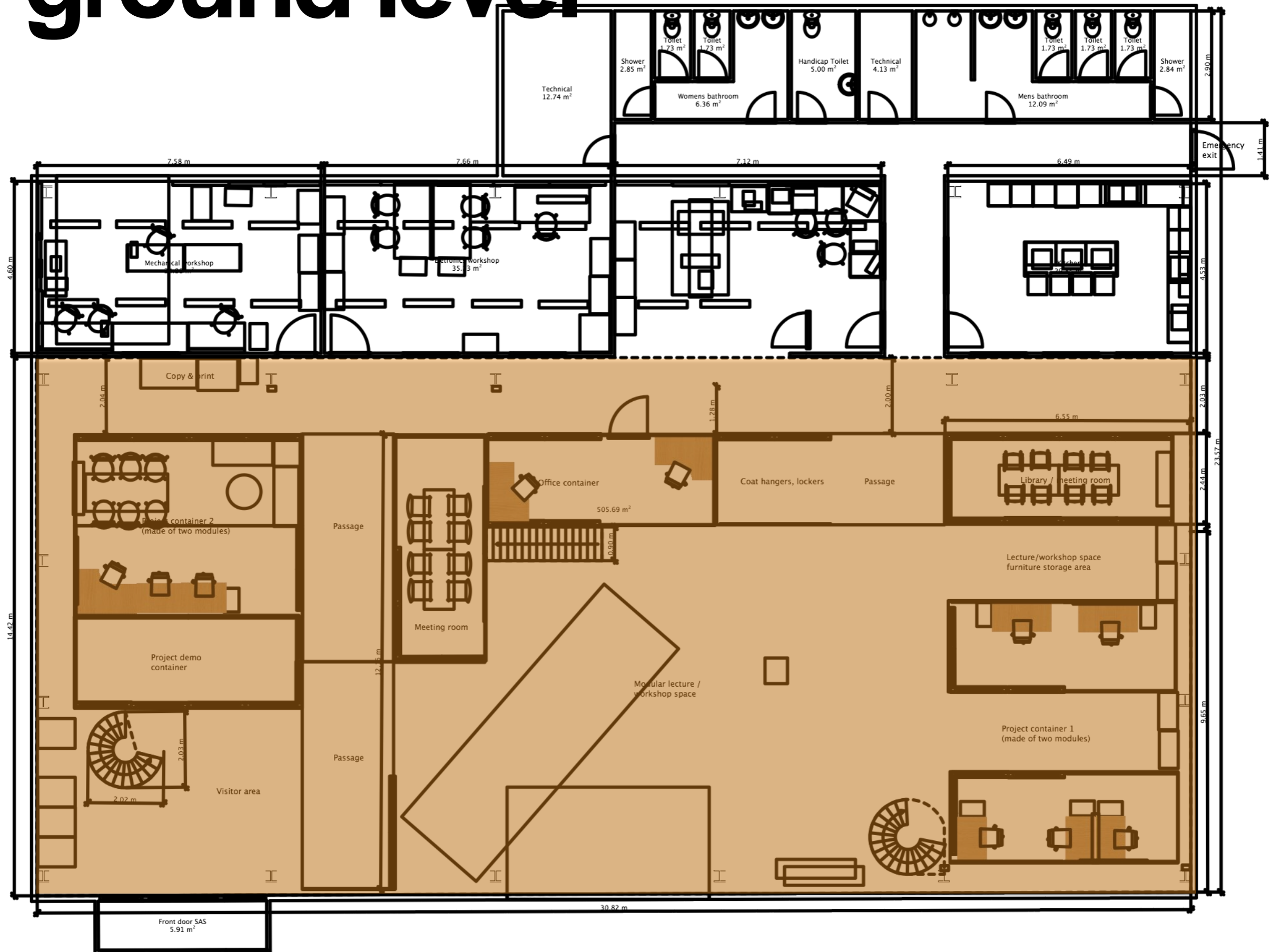
ground level



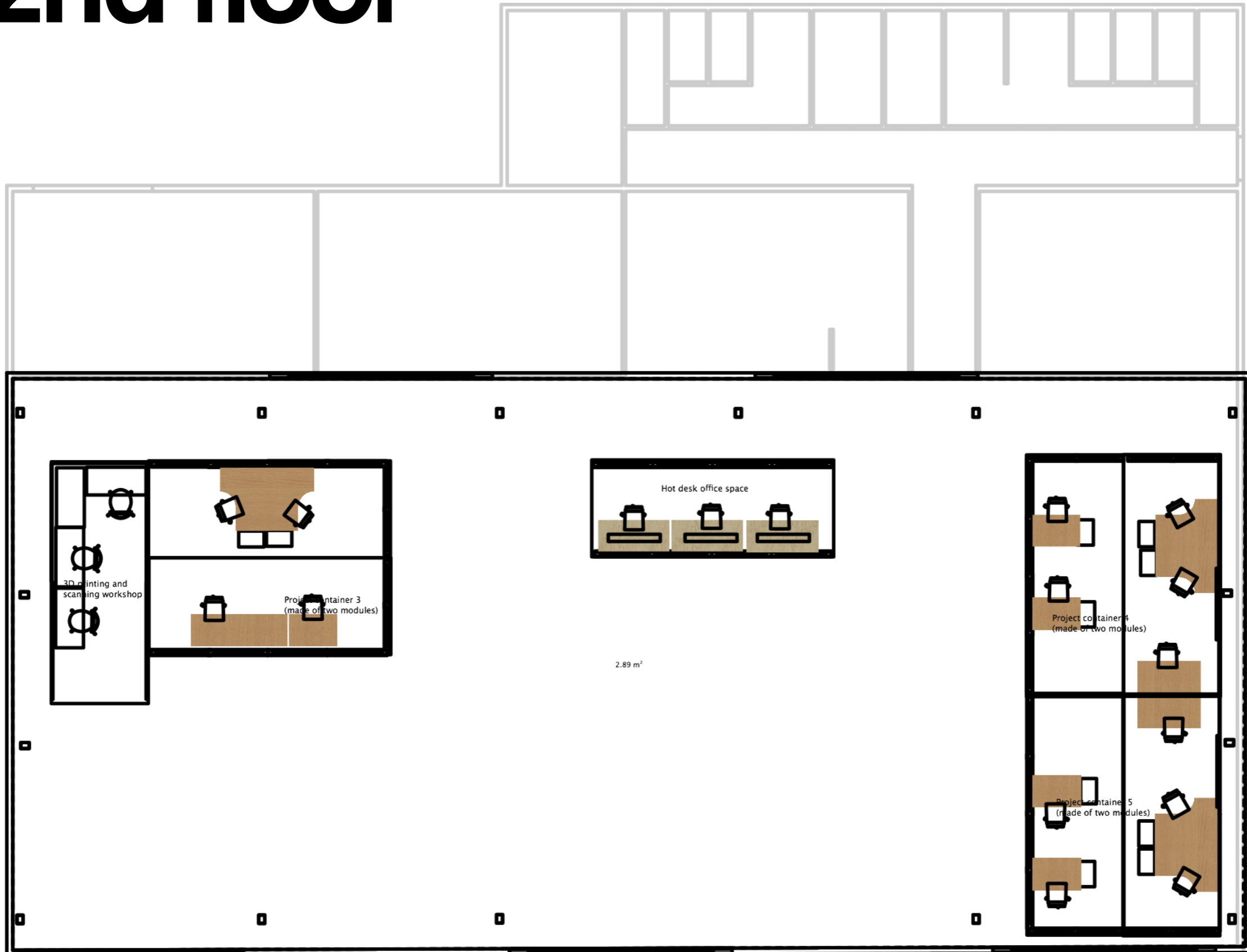
ground level



ground level



2nd floor



ideasquare in brief





A!

Aalto University
Design Factory



Tough questions? Ideas?



harri.toivonen@cern.ch