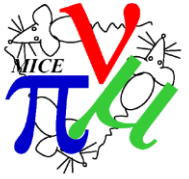


Step IV PRY Preparation - Contents



Jason Tarrant – Integration Engineering

- PRY Support/Base
- Early Frame Delivery

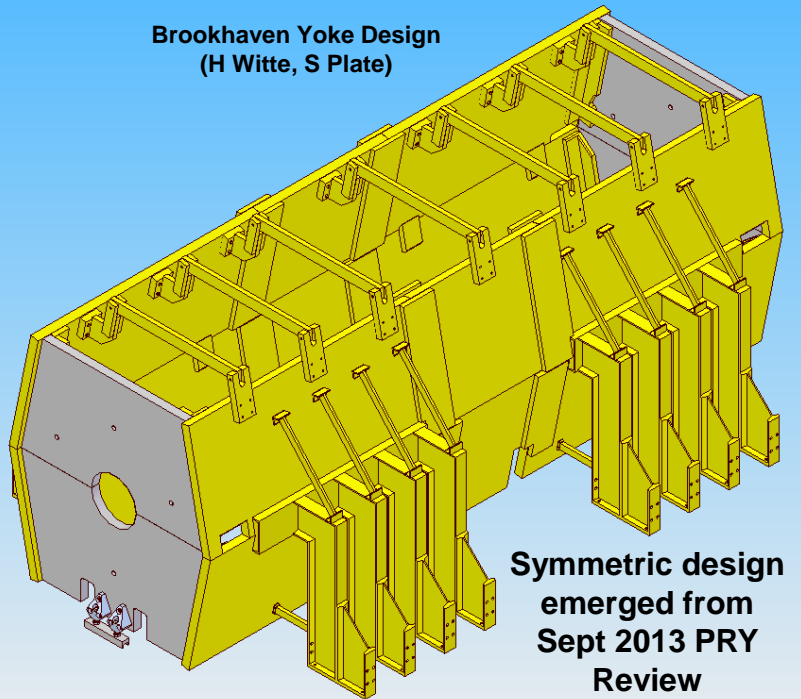


PRY Support / Base

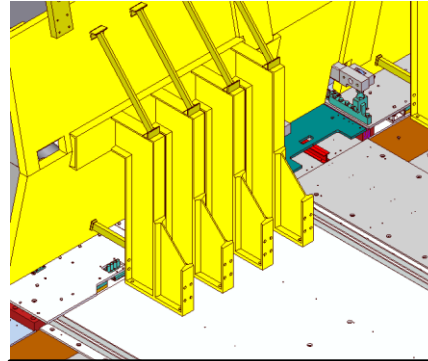


- PRY support / base: Fit in MICE Hall – Obstacles

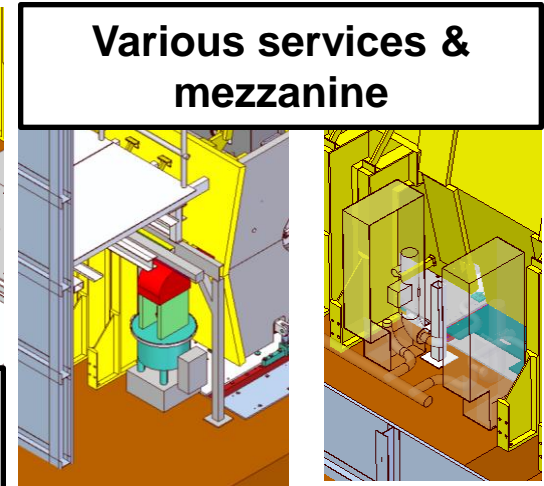
Brookhaven Yoke Design
(H Witte, S Plate)



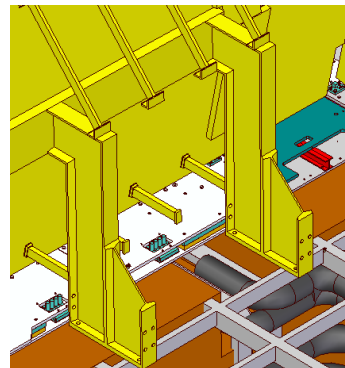
Symmetric design
emerged from
Sept 2013 PRY
Review



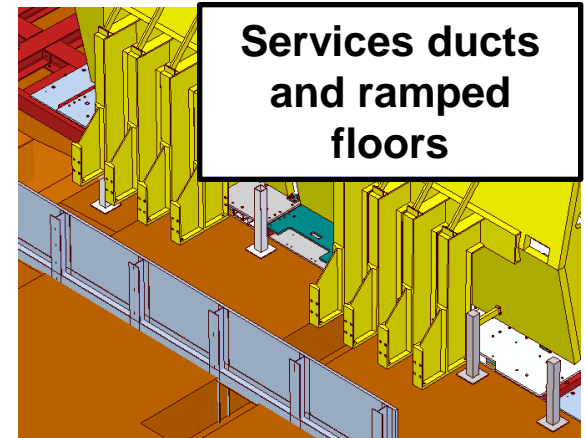
Moving platform
bases



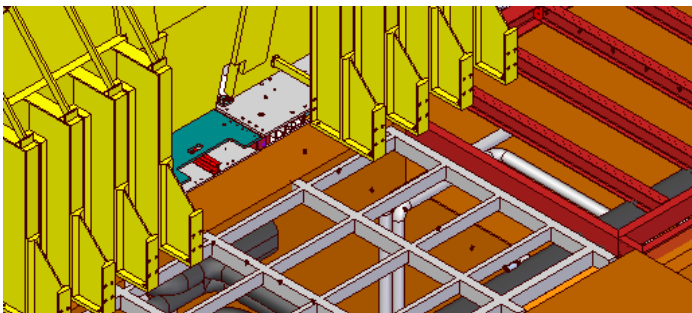
Various services &
mezzanine



Services ducts



Services ducts
and ramped
floors



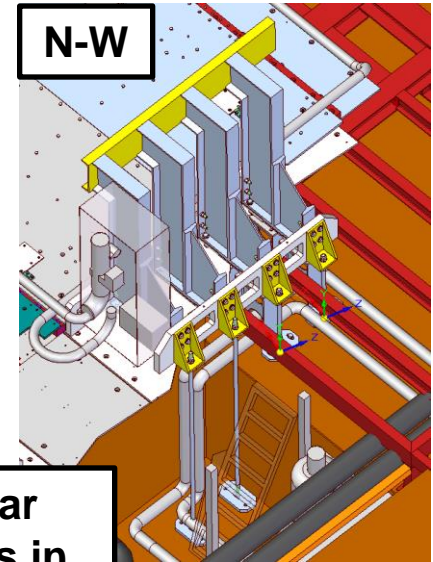
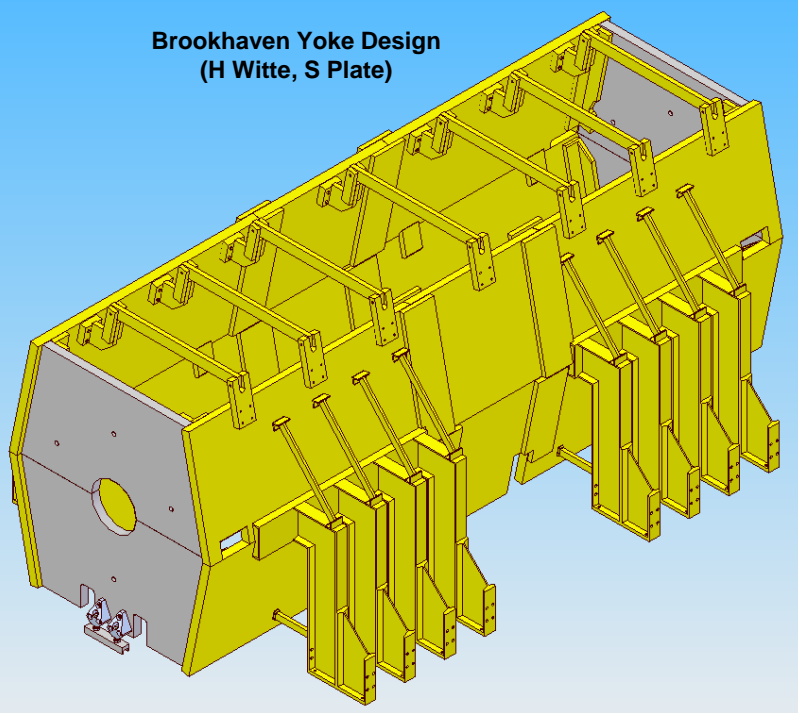
Trenches and changes in floor
levels under the experiment

PRY Support / Base

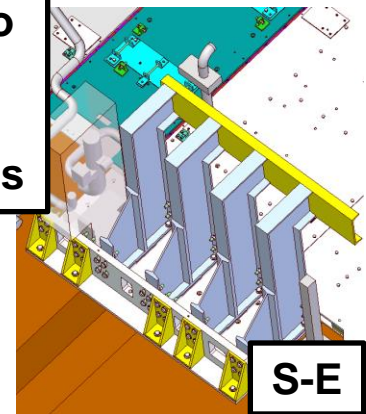
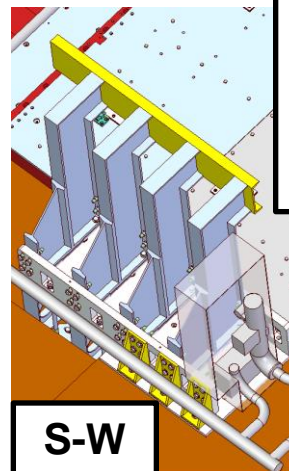


- PRY support / base: Fit in MICE Hall – Solution

Brookhaven Yoke Design
(H Witte, S Plate)



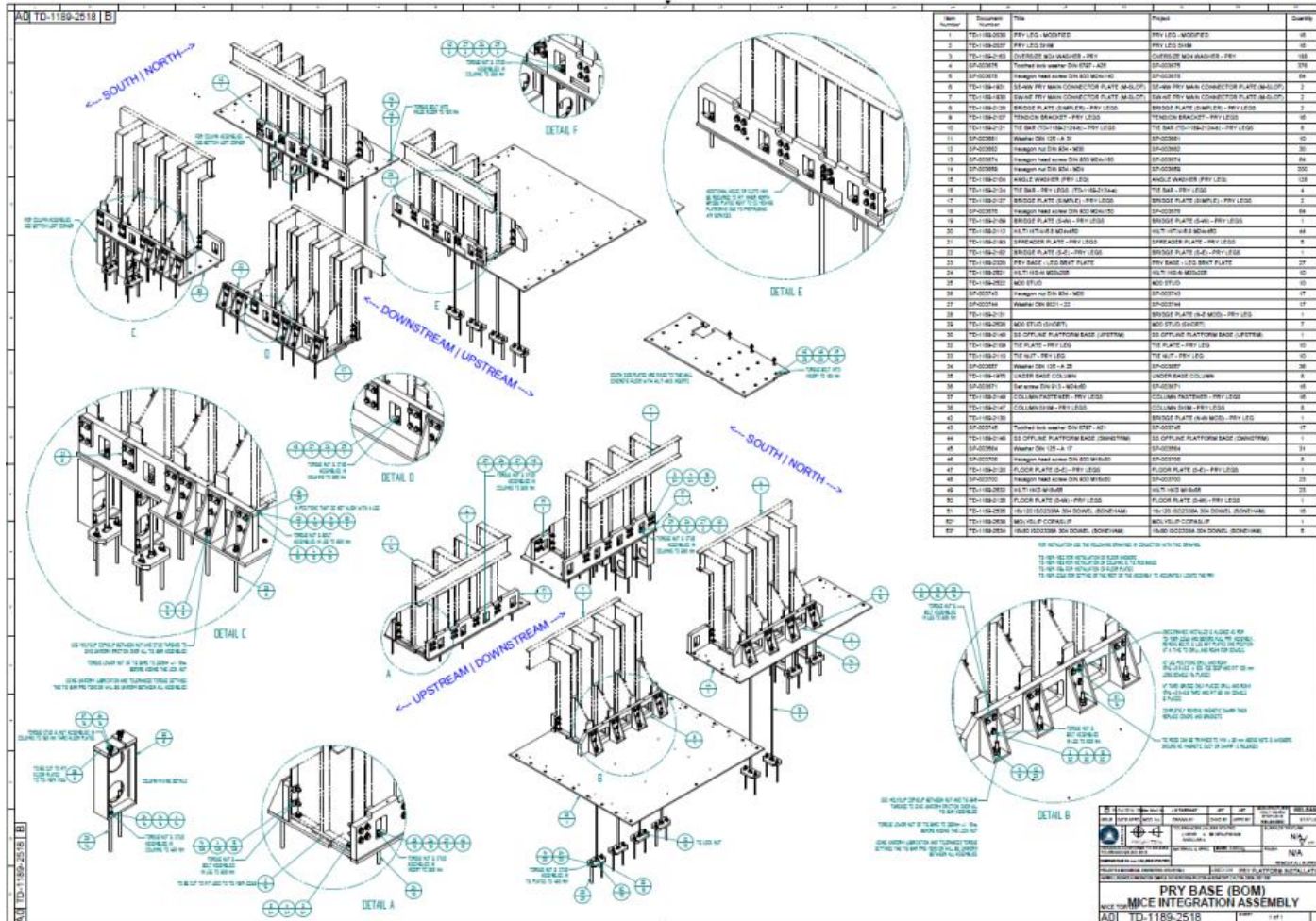
4 similar
supports in
quadrants to
deal with
localised
environments



PRY Support / Base



- PRY support base: All design & installation drawings released



This is the overall installation drawing, showing all parts as well as assembly instruction such as fastener torques



PRY Support / Base



- All Bases Installed



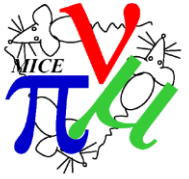
N-E



N-W



PRY Support / Base



- All Bases Installed



Step IV PRY – Early Frame Delivery



- Summary
 - South side frames delivered ahead of rest of PRY & north side frames – *landed in UK this week*
 - South side frames geometry and dimensions well known and set up before it leaves factory
 - Use south side frame for installation on north side = all north side engineering (survey, shimming etc) can take place AHEAD of north frame delivery (north side frame must leave factory geometrically identical to south side frame)
 - Install south side frame on south side = all south side engineering can take place AHEAD of main PRY delivery and is ready for south side PRY install which is the first side

- Leg Weldment Assy's x 8**
- C-Channels x 2

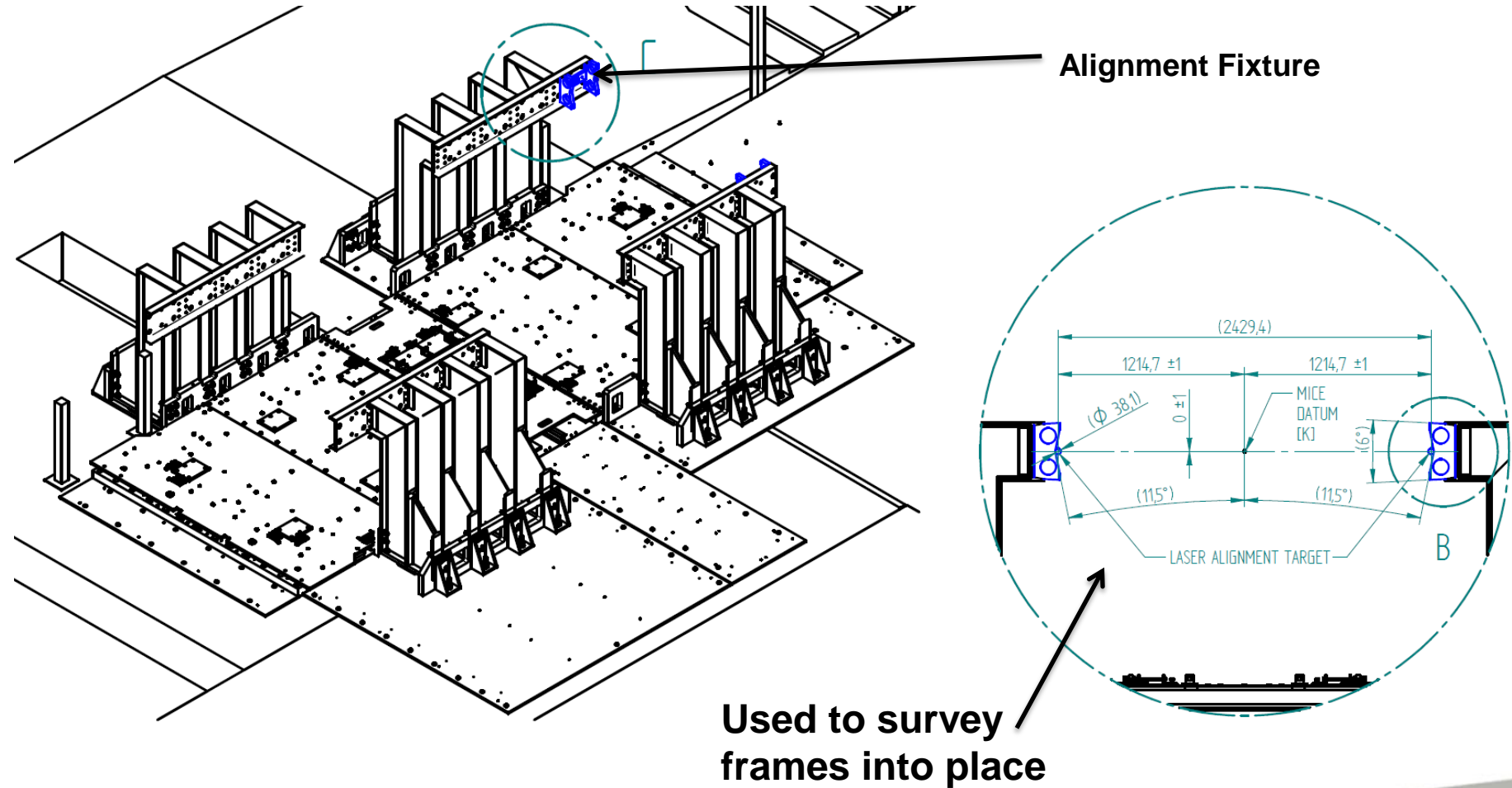


8

Step IV PRY – Early Frame Delivery



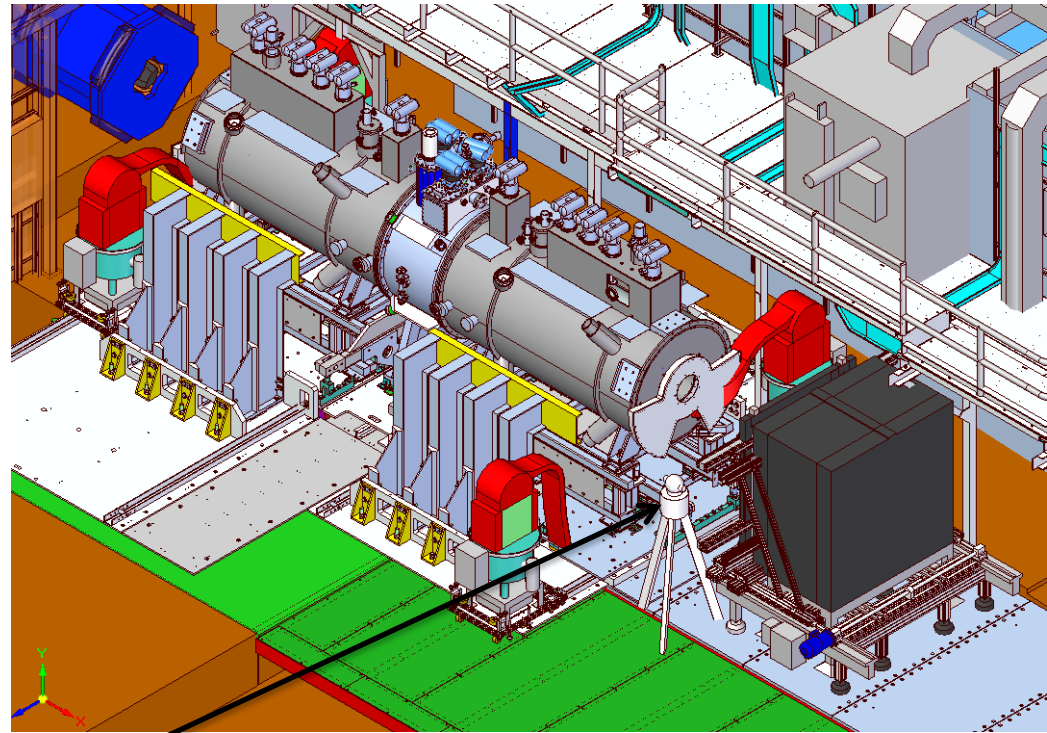
- Advance frame-set for pre-installation



Step IV PRY – Early Frame Delivery



- Procedure – North Side
 - North side frame install
 - Adjust height with set screws
 - Survey frame with gauge until correctly positioned
 - Determine shim cuts
 - Cut shims
 - Fit Shims
 - Final Survey



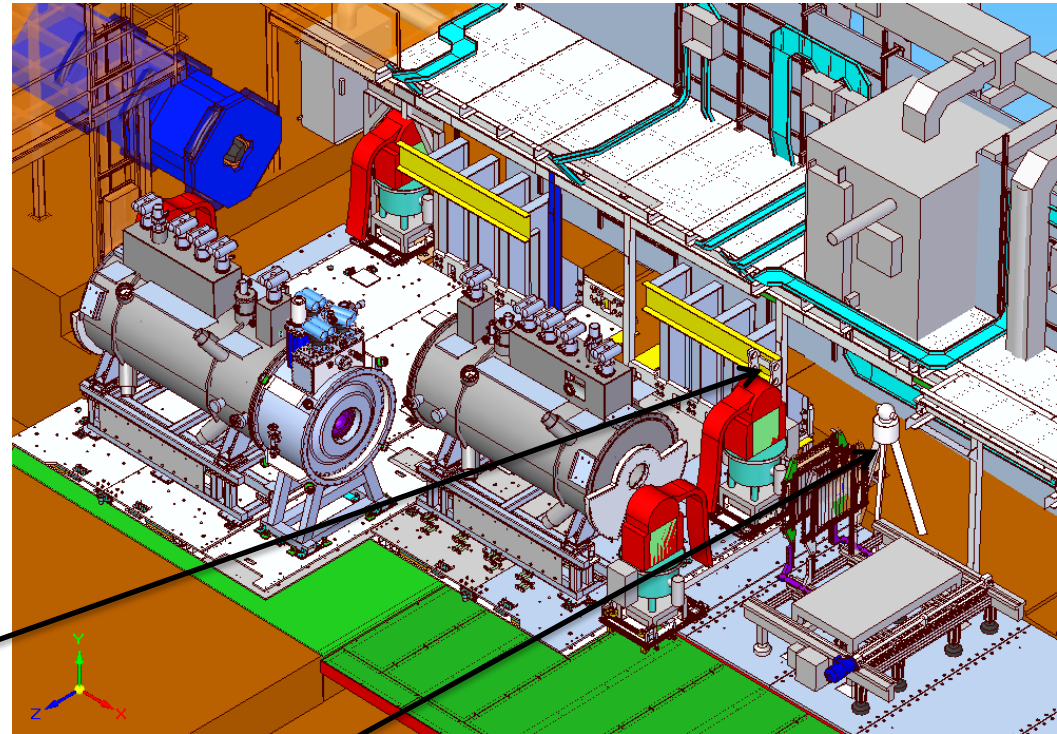
Laser Tracker



Step IV PRY – Early Frame Delivery



- Procedure – South Side
 - South side frame install
 - Adjust height with set screws
 - Survey frame with gauge until correctly positioned
 - Determine shim cuts
 - Cut shims
 - Fit Shims
 - Dowel & final tighten all fixings
 - Final Survey



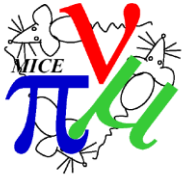
Alignment
Gauge

Laser Tracker
(KL / EMR shown off for this
view)



Science & Technology
Facilities Council

Conclusion



- PRY Bases installed
- Advance frame delivery allows
 - North side engineering prep
 - South side engineering prep & install
 - Possible installation trials prior to plate arrival (check and test lifting & handling procedures)