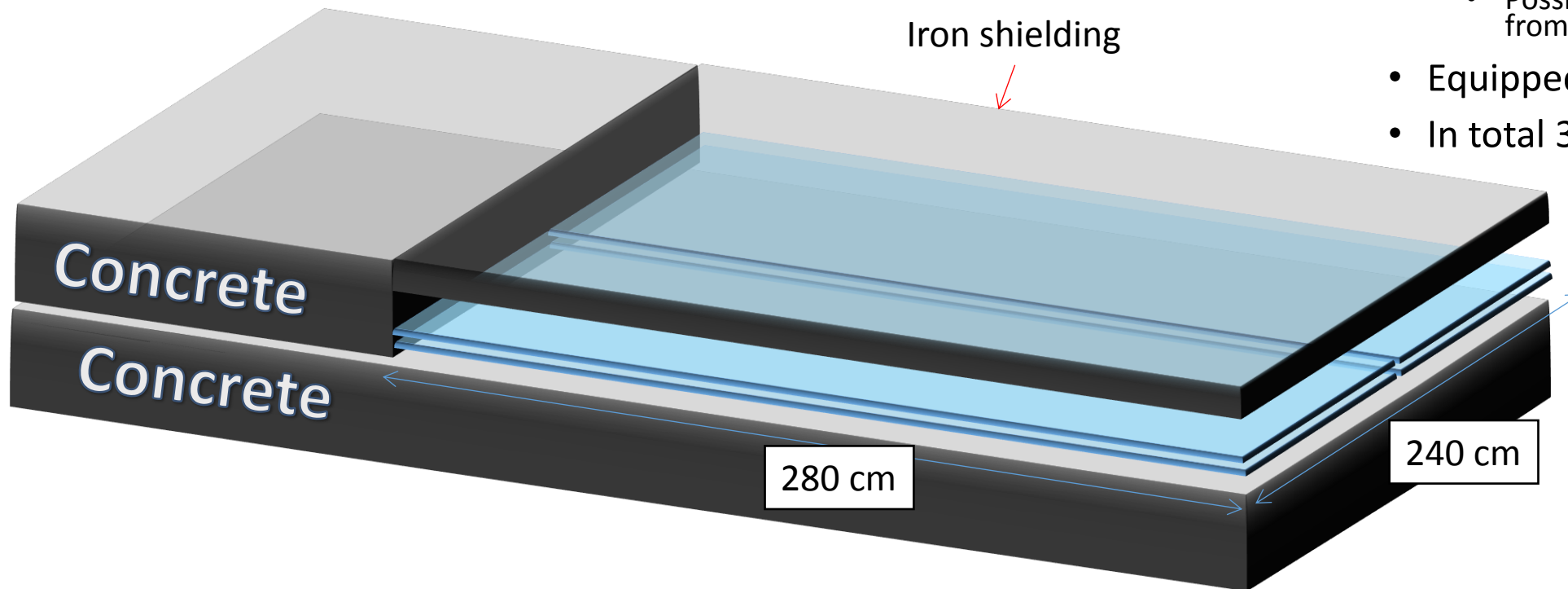


CR tracker production

G. Aielli for the RPC collaboration

Bottom tracker delivered at CERN

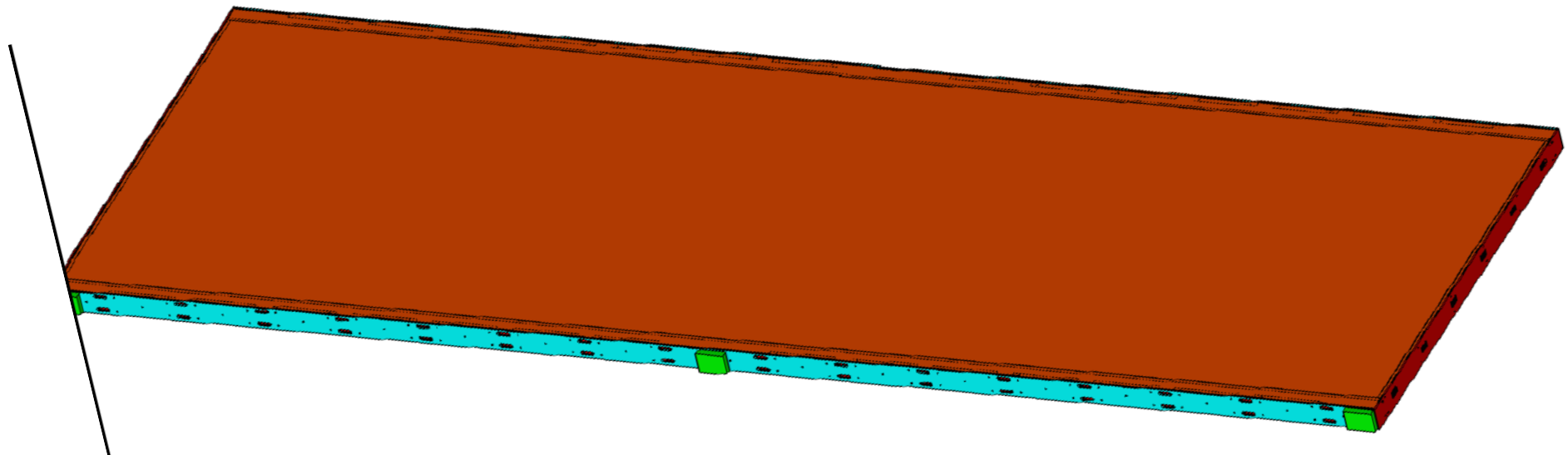
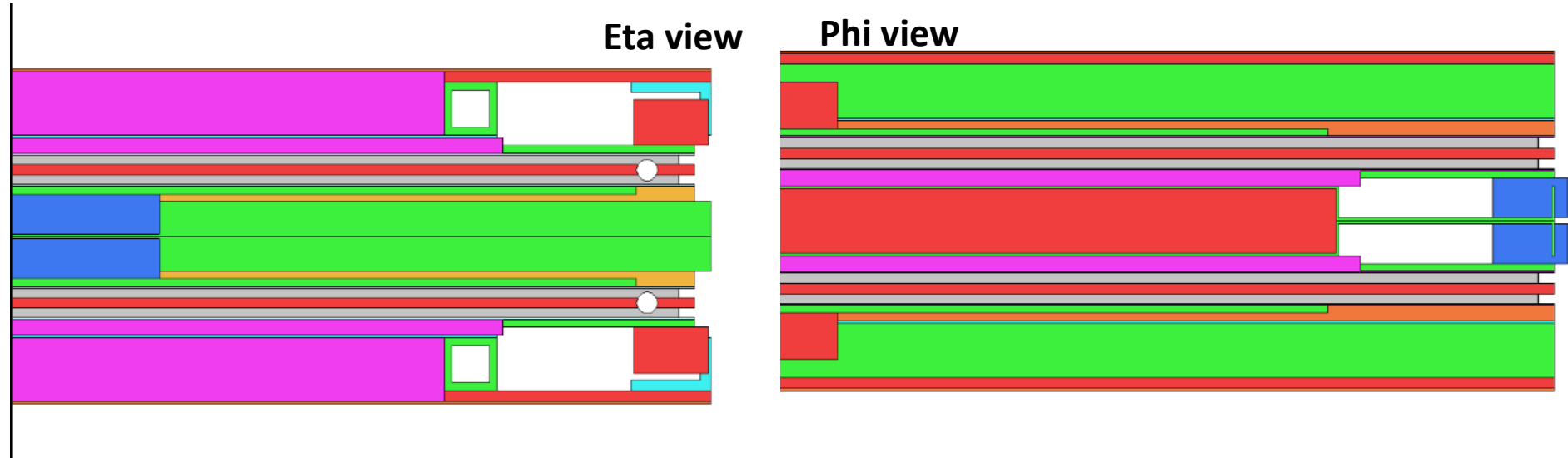
- 4 x 40 strip on short side
 - 160 channels
- 4 x 96 strip on long side
 - Possible wired OR to reduce channels from 384 to 192
- Equipped with the ATLAS FE
- In total 352 channels to be read



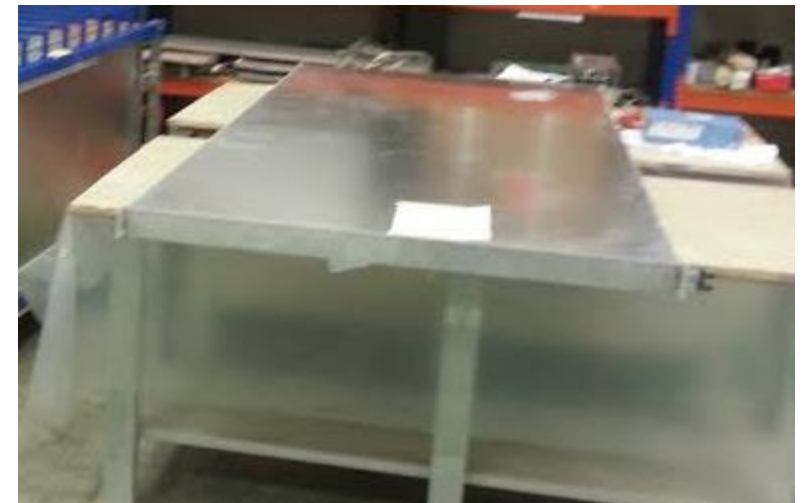
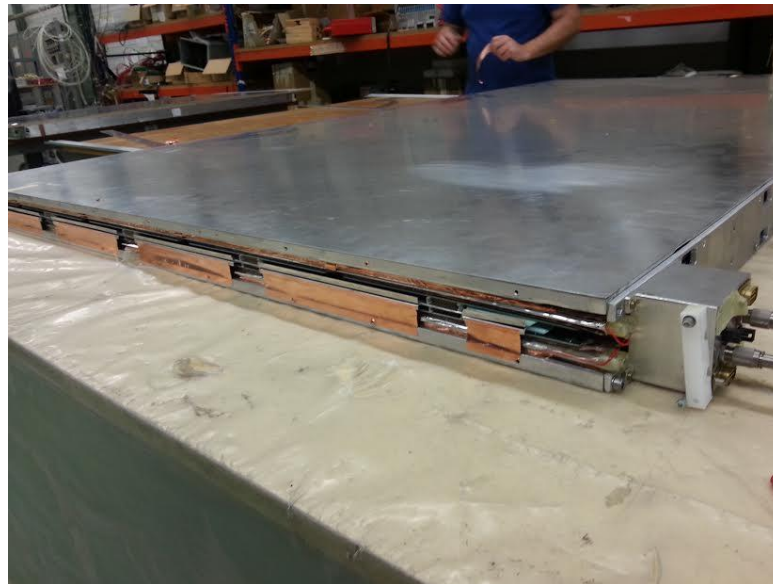
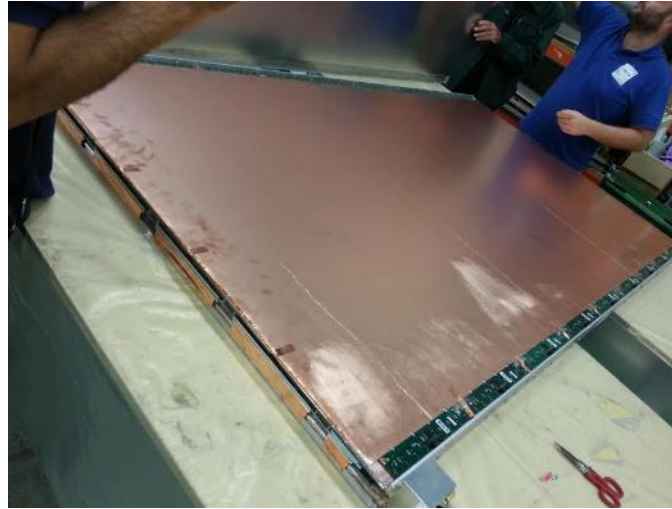
Transportation to GIF++ scheduled by 15 January

Plan to test in the preparation area before installation in the bunker

Chamber design

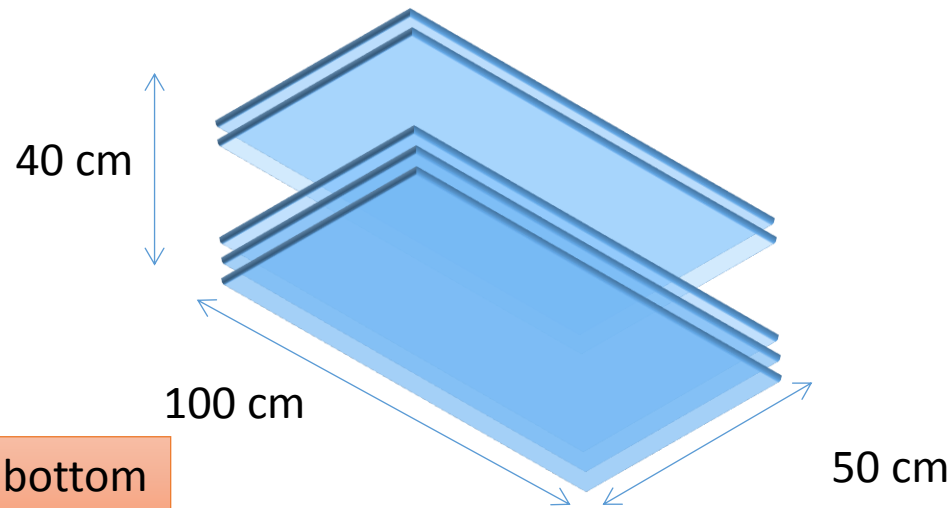


Final assembly of the chambers in BB5



Top Tracker in construction

- Trigger and high time resolution.
 - 1 doublet + 1 triplet → 5 independent detectors area $1 \times 0.5 \text{ m}^2$;
 - Gap structure 1mm gas gap with 1.2 mm electrodes
 - strips 25 mm wide on both views
 - Strip staggering to increase the resolution



- 5 x 40 strip on short side
- 5 x 80 strip on long side
- Equipped with the new FE in Si technology
- In total 600 channels to be read

- Delivery scheduled by March

Readout and trigger

- Receiver system delivered to adapt signals to the TDC and perform fast OR with big grouping flexibility
- The trigger can be preformed by selecting a majority of the OR-ed layers, using standard NIM modules

