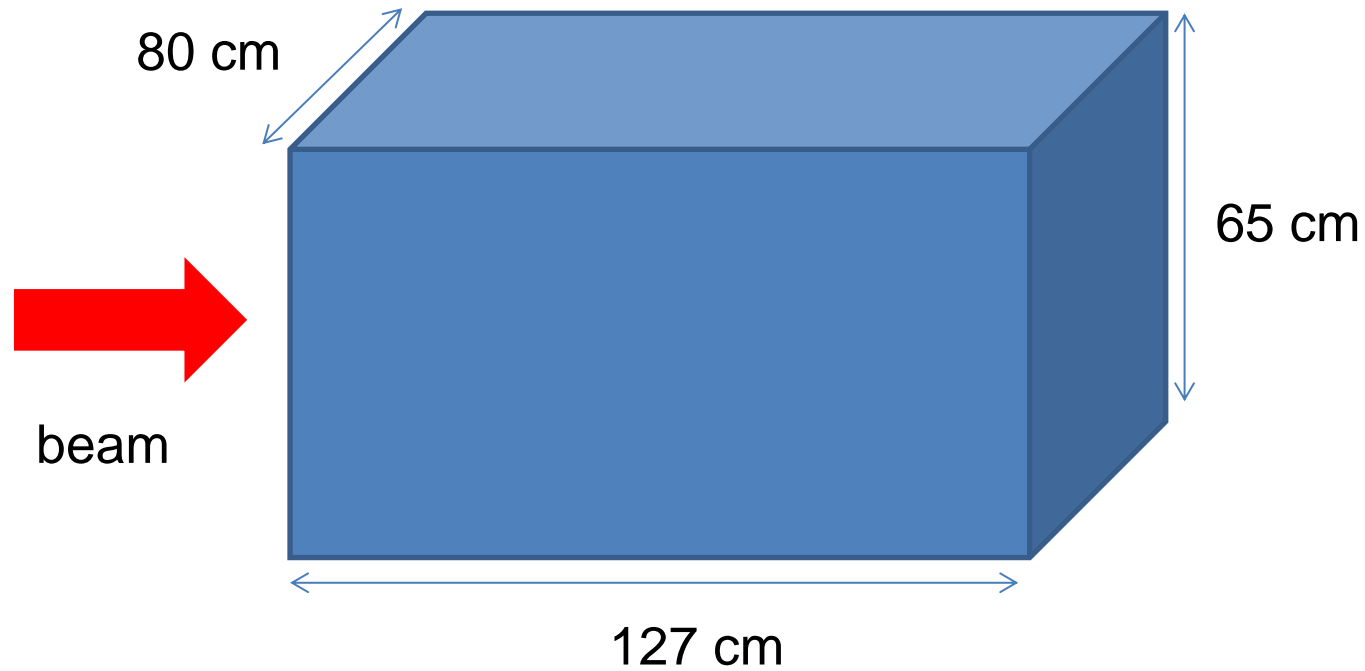


NA61 SciFi tests

Alessandro Bravar





All detectors in AI box (i.e. scintillaors and SciFi ribbons)

Box must be centered to the beamline

Additional beamline detectors might be useful to center the beam

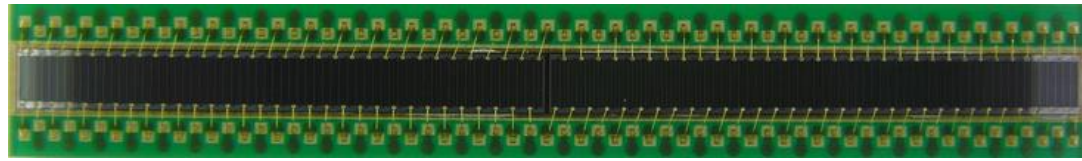
Electronics: to sit in a rack outside of the area,
need to pull <100 coax. cables (bundles of 16)

frame
(plastics)

32 mm

32 mm

SciFi ribbon – 32 mm wide
250 μ fibers / 2 layers



Si-PM array
coupled directly to SciFi
(can be attached to the frame)
128 readout channels / 250 μ pitch

hybrid electronics

readout

- 2 Si-PM ch. can be connected to reduce # of readout channels to 64 for a 500 μ pitch
- use “hybrid” circuits to amplify signal (with HI expect very large signals)
- signals look like those from PMTs

