



**Welcome to EuCARD-2**  
**2<sup>nd</sup> annual meeting**  
*Caterina Biscari*



We are here

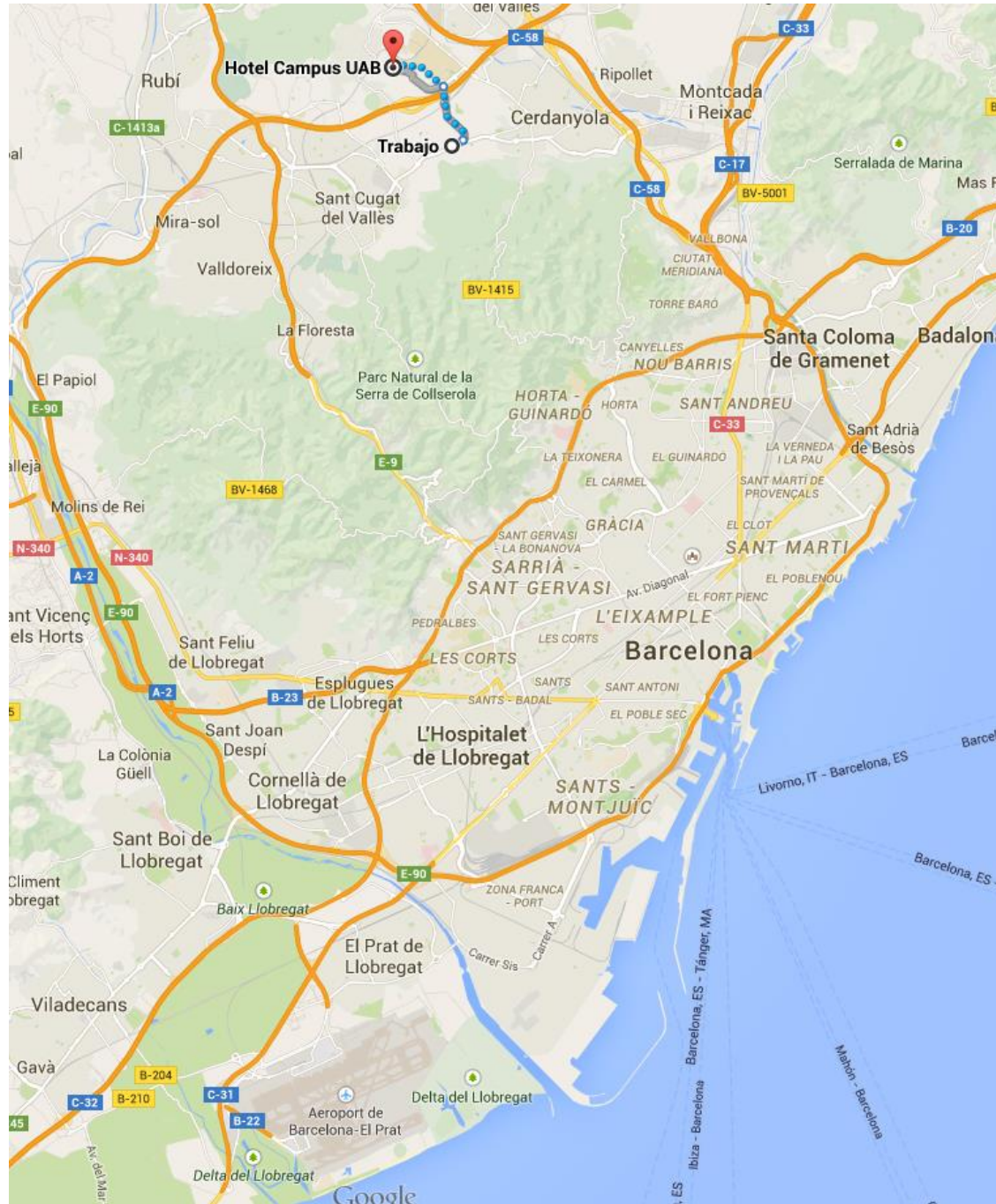


ALBA

3km 



About 20 km  
from  
downtown



# ALBA History

*First proposal for building a synchrotron in Spain: first nineties*

*10 years for the approval*

*10 years for full operation*

ALBA funding April 2003

Project design 2004-2005

Start building – First stone May 2006

Accelerator Installation Feb 2008

Accelerator Commissioning Oct 2008

Beamline Commissioning 2011 - 2012


**First Official User May 2012**

**Seven BL in operation Feb 2013**

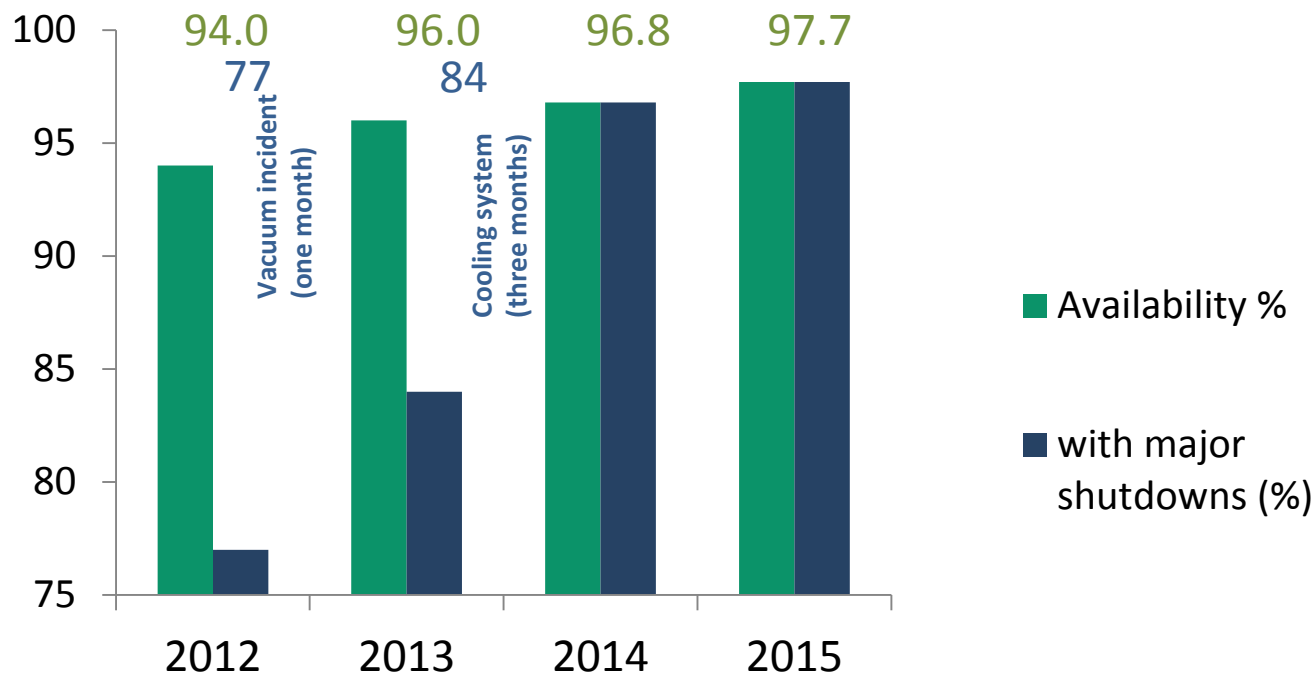
**Phase II Beamlines Construction 2014-2018**

**Phase III Beamlines Construction Negotiating with administration**



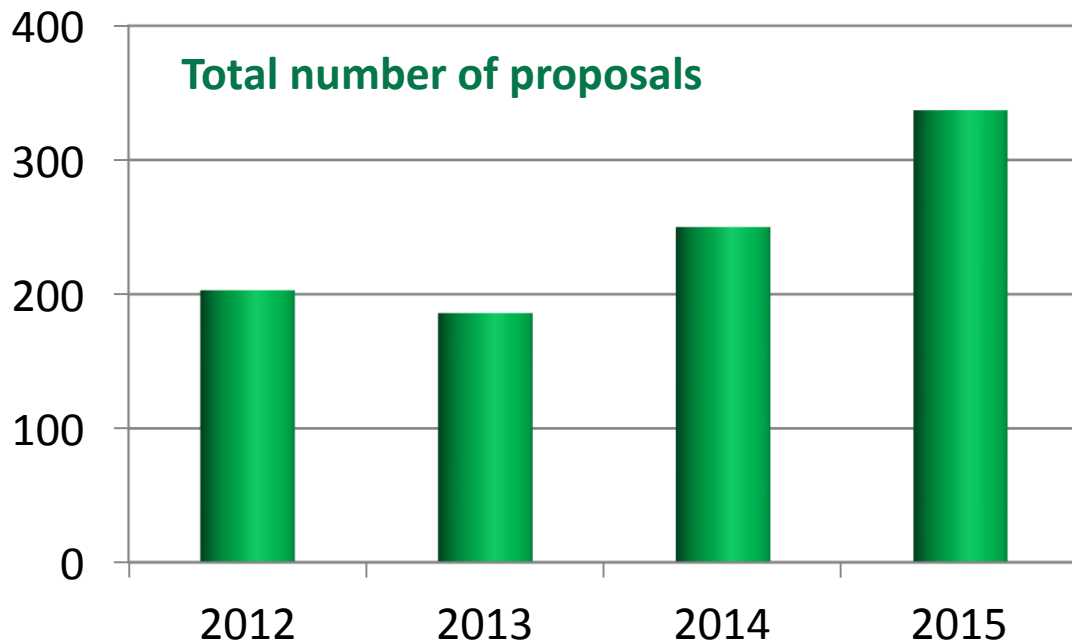
- 
- 7 Phase I BL in operation
  - 2 Phase II BLs in construction
  - Negotiating funding for phase III BLs

# Availability (20 April 2015)



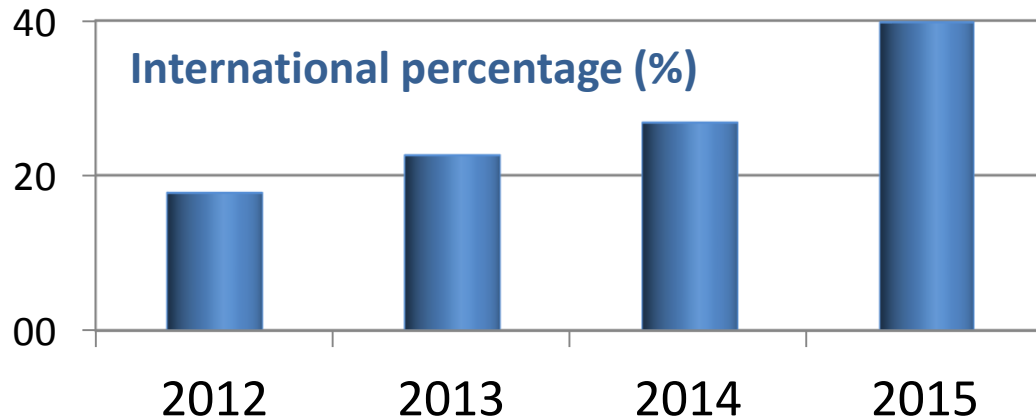
	<b>2012</b>	<b>2013</b>	<b>2014</b>	<b>2015</b>
Accelerator operation [h]	3280	4464	5250	5730
Scheduled user beam [h]	2387	3540	3888	4320
Availability [%]	77.0	83.8	96.8	97.7*
MTBF [h]	21.0	25.0	33.7	
MTTR [h]	1.0	0.8	1.1	

\* At 20-04-15



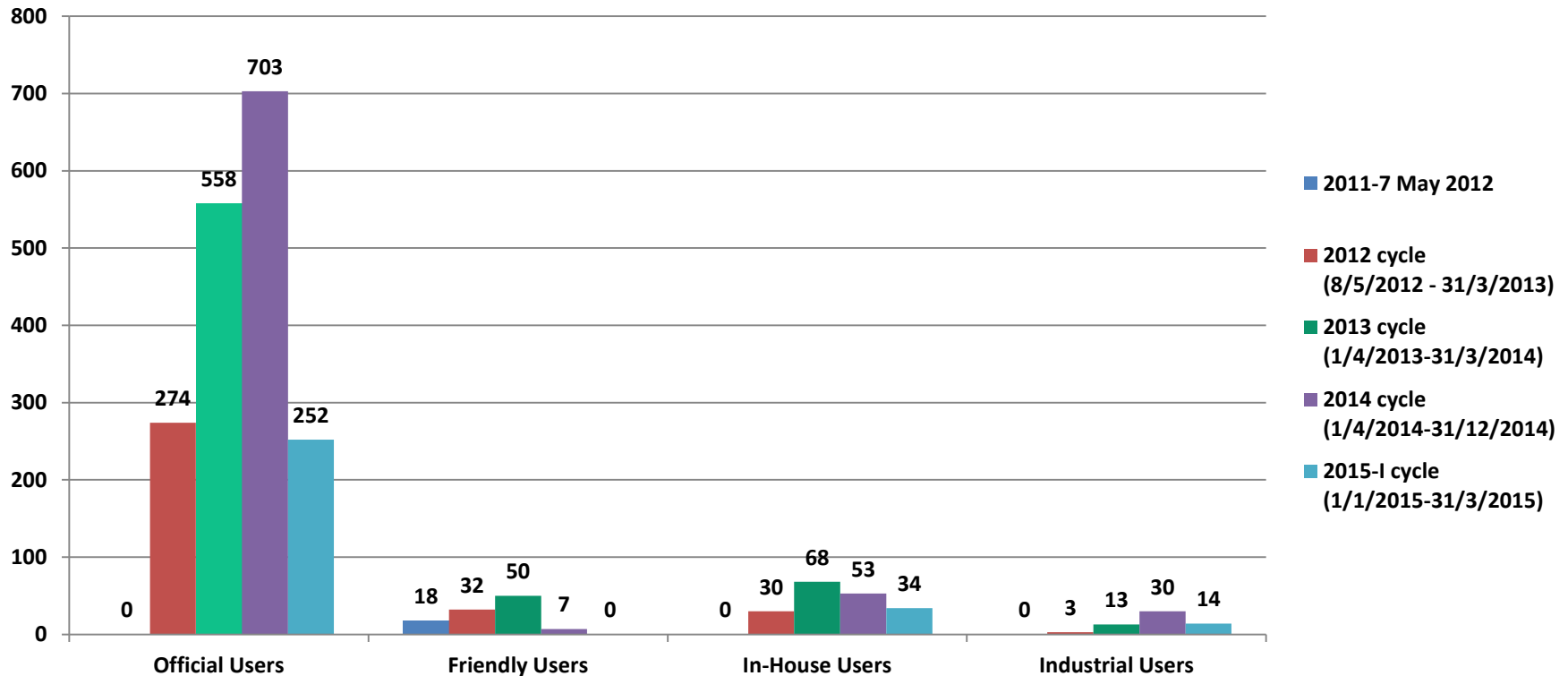
Five user calls:  
 2012-14: One per year  
 2015-on: Two per year

Average overbooking factor above 2.



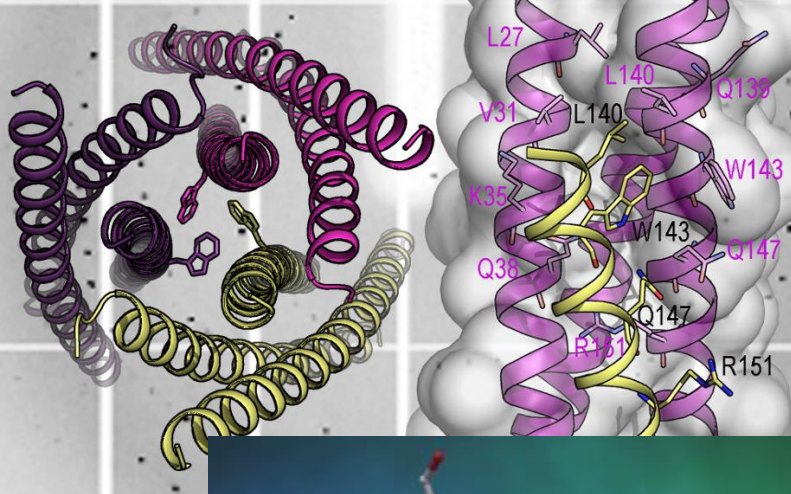


## Users from 2011 to 2015-I call (31/3/2015)

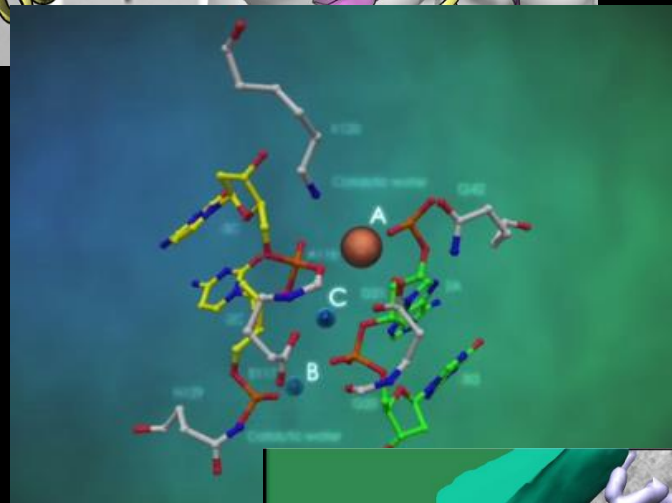


In the middle of 4<sup>th</sup> call (Run Jan-Jun 2015)  
5<sup>th</sup> call just evaluated (Run Jul-Dec 2015)

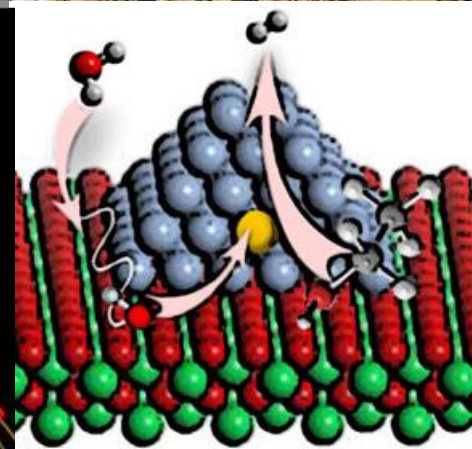




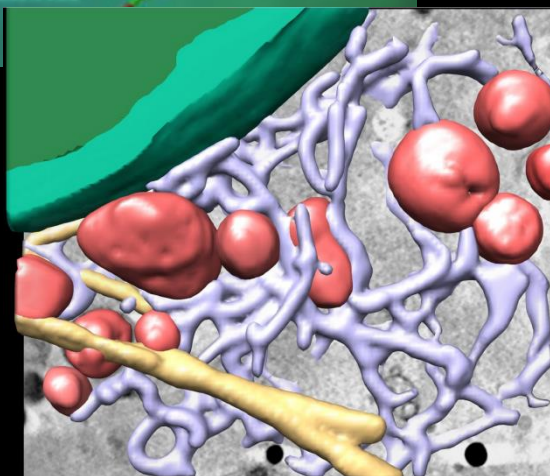
Cultural  
heritage



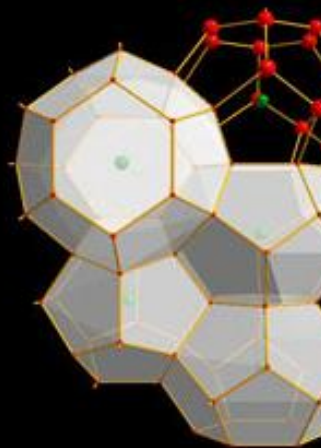
Few  
examples



Life  
science



Materials  
science





*23 April 2015*